



2021 Spring Frostbite Series
Chicago Yacht Club (OA)
March 28 – May 2, 2021
Belmont Station, Chicago, IL

Sailing Instructions (SIs)

ABBREVIATIONS

[DP] Rules for which the penalties are at the discretion of the protest committee.

[NP] Rules that are not grounds for a protest or request for redress by a boat. ***This changes RRS 60.1(a)***

1 RULES

- 1.1 The event is governed by the rules as defined in *The Racing Rules of Sailing*.
- 1.2 Appendices T and V1 shall apply.
- 1.3 All applicable governmental regulations regarding health, safety and infectious disease control shall be strictly followed by all competitors.
- 1.4 Competitors using any Chicago Yacht Club facilities, including docks, shall follow [House and Ground Rules In Effect Due to Covid-19](#).
- 1.5 Crew substitutions or changes shall be recorded online prior to the start of racing each day.
- 1.6 **[NP]** Violations of Section 1.3, 1.4, and 1.5 of this Notice of Race shall not be protestable by a competitor but may be protested by the Race Committee or Organizing Authority. ***This changes RRS 60.1.***

2 CHANGES TO SAILING INSTRUCTIONS

- 2.1 Any change to the sailing instructions will be posted before 0900 on the day it will take effect, except that any change to the schedule of races will be posted by 2000 on the day before it will take effect.
- 2.2 Changes to sailing instructions may be made on the water by making an announcement by loudhailer prior to the warning signal of each race.

3 COMMUNICATIONS WITH COMPETITORS

- 3.1 Notices to competitors will be posted on the official notice board online at <https://www.regattanetwork.com/event/21987>.
- 3.2 On the water, the race committee intends to monitor and communicate with competitors via VHF radio on channel 73.
- 3.3 **[DP]** While racing, except in an emergency, a boat shall not make voice or data transmissions and shall not receive voice or data communication that is not available to all boats.

4 CODE OF CONDUCT

[DP] Competitors and support persons shall comply with reasonable requests from race officials.

5 SIGNALS MADE ASHORE

- 5.1 **[NP]** Signals made ashore will be displayed from the main flagpole at the east end of the Belmont Station. In addition, signals made ashore will be distributed, as a courtesy, to the email



or text address listed in a boat's entry form. Failure to receive courtesy electronic communications shall not be grounds for a request for redress. ***This changes RRS 62.1(a).***

- 5.2 When flag AP is displayed ashore, '1 minute' is replaced with 'not less than 30 minutes' in Race Signals AP.

6 SCHEDULE OF RACES

- 6.1 Onsite registration will be held each day of racing from 0900 to 1000 for the AM session and 1200 to 1300 for the PM session.
- 6.2 There will be two sessions of racing based on the table below. The scheduled time of the first warning for the AM session is 1055. The scheduled time of the first warning for the PM session is 1355.

Date	AM Session			PM Session	
	Laser	V15	Sonar	Sonar	J/70
3/28/21	x	x	x	x	x
4/3/21*	x	x	x	x	x
4/11/21	x	x	x	x	x
4/18/21	x	x	x	x	x
4/25/21	x	x	x	x	x
5/2/21	x	x	x	x	x

*Saturday

- 6.3 The Race Committee will attempt to run as many races as practical.
- 6.4 There will be no warning signal after 1300 for the AM session and no warning signal after 1600 for the PM session.

7 CLASS FLAGS

Class flags will be flags bearing the class insignias.

8 RACING AREA

The racing area will be in the open waters of Lake Michigan approximately one-half mile east of Belmont Harbor or in the waters of Belmont Harbor.

9 COURSES

- 9.1 The diagrams in Addendum A show the courses, the order in which the marks are to be passed, and the side on which each mark is to be left.
- 9.2 For windward/leeward courses (W/L) the course will be displayed as W/L + the number of legs.
- 9.3 For W/L courses, Mark 2 will be a gate. If the gate is not in place, the single leeward Mark 2 shall be left to port.
- 9.4 For W/L courses, Mark 1 may have an offset. If the offset is not in place, the single windward mark shall be left to port.
- 9.5 For the Modified Olympic course (**Course TL**), the course will be displayed as TL + the number of W/L legs to be completed in the triangle.
- 9.6 For the Modified Windward-Leeward Course (**Course M**), Race Committee will signal whether the start/finish line is "open" or "closed". Open means that competitors may sail through the line on the upwind or downwind leg. Closed means that competitors may not sail through the line on the upwind or downwind leg.



- 9.7 No later than the warning signal, the race committee signal vessel will display the course and approximate compass bearing of the first leg.

10 MARKS

- 10.1 Original marks will be orange shapes.
- 10.2 New marks, as provided in SI 13, will be yellow shapes for the first change. Subsequent changes will alternate orange and yellow shapes. Offset marks will not be set for a change of course.
- 10.3 The starting mark will be an orange shape.
- 10.4 The finishing mark for downwind finishes will be a white shape when a race is conducted in the open waters of Lake Michigan; the finishing mark for upwind finishes will be the active weather mark. The finishing mark will be an orange shape when a race is conducted in the waters of Belmont Harbor.

12 THE START

- 12.1 Races will be started using Appendix U, Sound-Signal Starting System. The starting order will be announced on the water.
- 12.2 The starting line will be between a staff displaying an orange flag on the signal boat at the starboard end and the course side of the port-end starting mark.
- 12.3 A boat whose warning signal has not been made shall keep clear of the starting area, defined as the area extending approximately 50 feet to windward, leeward, and either end of the starting line.
- 12.4 Flag K, if displayed before the warning, means fleets shall sail with jib and main only.
- 12.5 If any part of a boat's hull is on the course side of the starting line at her starting signal and she is identified, the race committee will attempt to hail her sail number. **[NP]** Failure to hail her number, failure of her to hear such a hail, or the order in which boats are hailed will not be grounds for a redress for request. ***This changes RRS 62.1(a).***
- 12.6 The race committee may combine classes for a start by displaying both class flags at the warning.

13 CHANGE OF THE NEXT LEG OF THE COURSE

- 13.1 To change the next leg of the course, the race committee will lay a new mark (or move the finishing line) and remove the original mark as soon as practicable. When in a subsequent change a new mark is replaced, it will be replaced by an original mark.
- 13.2 A course change of 5 degrees or less will not be signalled by the race committee. The course change will continue to use the active mark. ***This changes RRS 33(a).***

14 THE FINISH

- 14.1 The finishing line is between a staff displaying a blue flag on the signal vessel and the course side of the finishing mark.
- 14.2 Flag A displayed, with no sound signal, while boats are finishing means "No more racing today."

15 PENALTY SYSTEM

Appendices T and V1 shall apply.

16 HEARING REQUESTS

- 16.1 Protests and requests for redress shall be filed in person at the protest desk at Chicago Yacht Club Belmont Station within the appropriate time limit.



- 16.2 Alternatively, hearing requests forms are available from the US Sailing RRS mobile app and can be submitted to regattamanager@chicagoyachtclub.org within the appropriate time limit.
- 16.3 A boat's protest time limit is 30 minutes from the docking time of the Signal Boat.
- 16.4 Hearings will be held in person at Belmont Station immediately following the racing in a socially distant manner.

17 SCORING

- 17.1 The Low Point System of RRS Appendix A will apply.
- 17.2 9 races are required to be completed to constitute a series.
- 17.3 Once a series has been completed, each boat may exclude one race for every 5 sailed, for the entire series.
- 17.5 Rule A5.3 applies.
- 17.6 Scoring inquiries shall be emailed to regattamanager@chicagoyachtclub.org.

18 SAFETY REGULATIONS

- 18.1 Each boat shall check in by sailing past the race committee signal boat, hailing or displaying her sail number, and receiving an acknowledgement from the race committee prior to her first race on each day of racing. A boat found to have broken SI 19.1 may receive a scoring penalty for her first race that day equal to 20% of the number of competitors registered in her class.
- 18.2 A boat that retires from a race shall notify the race committee either before leaving the course or, if that is impracticable, immediately after arriving ashore. A boat may notify the race committee using the designated VHF hailing channel. A boat found to have broken SI 19.2 may receive a scoring penalty in every race that day equal to 20 percent of the number of competitors registered in her class. ***This changes RRS 63.1.***

19 BERTHING

- 19.1 Boats may be stored at no charge on the north dinghy docks at Chicago Yacht Club Belmont Station for the duration of the series (limited to dinghies). Boats stored on the Belmont Station premises for this event shall be removed by May 2, 2021 at 1800.

20 RISK STATEMENT

Competitors participate in the regatta entirely at their own risk. See RRS 3, Decision to Race. The organizing authority will not accept any liability for material damage, personal injury, or death sustained in conjunction with or prior to, during, or after the regatta.

21 PRIZES

Prizes will be awarded in accordance with the NoR.

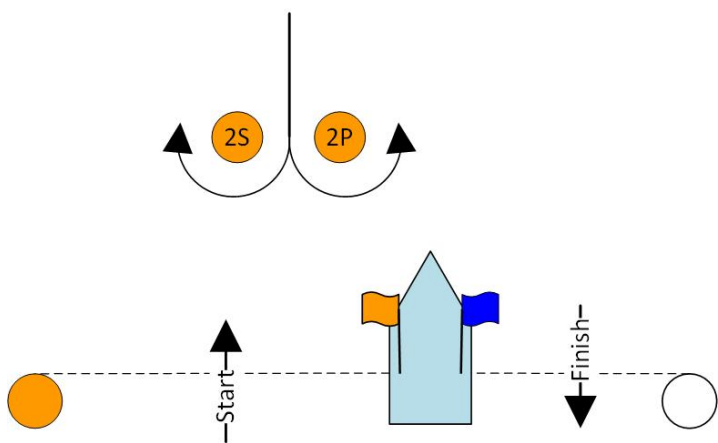
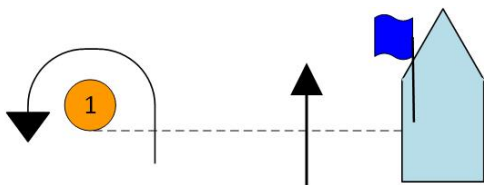
22 FURTHER INFORMATION

Regatta Manager
Chicago Yacht Club
400 E Monroe St, Chicago, IL 60603
312-861-7777, Ext. 5562 (o)
312-617-2279 (m)
regattamanager@chicagoyachtclub.org

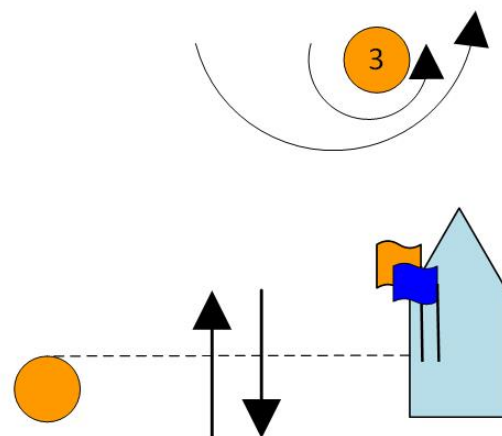
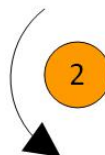
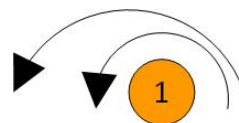


ADDENDUM A COURSES

Course W – Windward/Leeward	
Signal	Mark Rounding Order
W4	Start - 1 - 2 - 1 - Finish
W5	Start - 1 - 2 - 1 - 2 - Finish
W6	Start - 1 - 2 - 1 - 2 - 1 - Finish

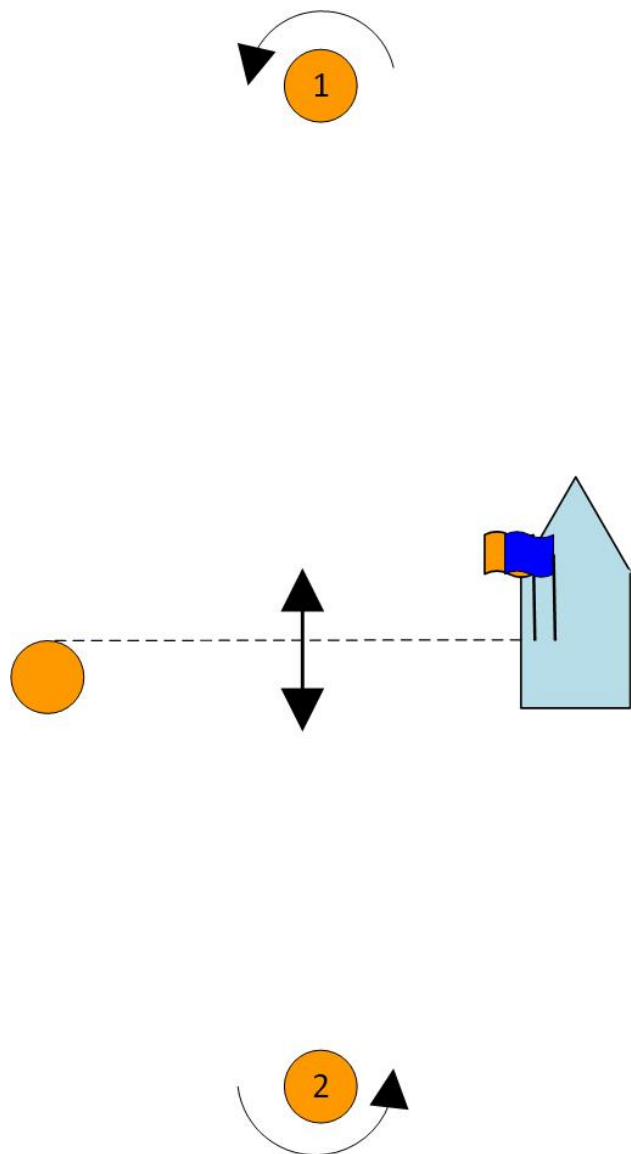


Course TL – Windward/Leeward	
Signal	Mark Rounding Order
TL2	Start - 1 - 2 - 3 - 1 - Finish
TL3	Start - 1 - 2 - 3 - 1 - 3 - 1 - Finish
TL4	Start - 1 - 2 - 3 - 1 - 3 - 1 - 3 - 1 - Finish





Course W – Windward/Leeward	
Signal	Mark Rounding Order
W4	Start - 1 - 2 - 1 - Finish
W5	Start - 1 - 2 - 1 - 2 - Finish
W6	Start - 1 - 2 - 1 - 2 - 1 - Finish



Course B – Windward/Leeward	
Signal	Mark Rounding Order
B4	Start - 1 - 2 - 1 - Finish
B6	Start - 1 - 2 - 1 - 2 - 1 - Finish

