

ENSENADA PREVIEW RACE

SAILING INSTRUCTIONS

April 10, 2021

RULES

1. The regatta will be governed by the rules as defined in the current Racing Rules of Sailing.
2. Double headsails shall be allowed on Non-spinnaker class yachts and Non-spinnaker yachts sailing in spinnaker classes.
3. As defined in the Notice of Race. PHRF AREA C RLC RATINGS will be used.
4. An imaginary line connecting all channel buoys from the Alamitos Bay jetty entrance to the finish line shall be considered a continuous obstruction (shown below) in accordance with Racing Rule 19.2. **NO YACHT SHALL CROSS SAID LINE.**
5. **The head of all spinnakers or second headsails must be on or below deck level before the yacht's bow crosses an imaginary line between the entrance lights to Alamitos Bay Jetty.**

ELIGIBILITY AND ENTRIES:

As prescribed in the Notice of Race.

NOTICE TO COMPETITORS:

All notices will be posted on the Official Notice Board located outside Seal Beach Yacht Club.

CHANGES IN SAILING INSTRUCTIONS:

Any change will be posted by 1700, Friday, April 9, 2021 on the Official Notice Board located outside Seal Beach Yacht Club.

STARTING ORDER:

Class breaks and starting order will be posted by 1700, Friday, April 9, 2021 on the Official Notice Board located outside Seal Beach Yacht Club. First warning will be at 1655 hours on April 10th.

CLASS IDENTIFICATION FLAGS:

Each yacht shall fly an International Numerical Pennant from its backstay as listed by 1700, April 9, 2021 on the Official Notice Board.

COURSES:

Courses will be selected from the Ensenada Preview Course Chart. The race will begin near mark 38. The various courses will then round marks and/or oil platforms as detailed in the Sailing Instructions. The finish will be in Alamitos Bay between the Navy Yacht Club and the 5-mile per hour buoy near the fuel dock. When entering the channel, the head of the spinnaker or second headsail shall be on or below deck level before the yacht's bow crosses between the **ENTRANCE LIGHTS** to the Alamitos Bay Jetty. A straight line connecting adjacent channel marker buoys within the Alamitos Bay Jetty shall be considered a continuous obstruction in accordance with Racing Rule 19.2. **NO YACHT MAY CROSS SAID LINE.**

THE START:

The race shall be started in accordance with Racing Rule 26. The starting line will be between mark 38 and the Race Committee boat, located approximately one-half mile west-northwest of the Alamitos Bay Jetty. All yachts must check in with the Race Committee boat prior to the first class warning signal. As a courtesy, the Race Committee will attempt to notify recalled boats by hailing their sail number over VHF channel 71. Failure of a boat to see or hear her recall notification shall not relieve her of her obligation to start correctly and shall not be grounds for redress. A boat's position in the sequence of hailed numbers or broadcast numbers shall not be grounds for redress. Yachts not starting must keep clear of the starting area. Any violation may be subject to protest.

RECALLS:

Individual recalls will be signaled in accordance with Racing Rule 29.1. General recalls will be signaled in accordance with Racing Rule 29.2. Recalled class(es) shall start after all regularly scheduled classes. This changes Racing Rule 29.2.

RETIREMENT:

A yacht that checks in and later retires shall make every effort to notify the Race Committee before leaving the course area. If that is not possible then, at the first reasonable opportunity, notify the Race Committee at the finish line or at the Seal Beach Yacht Club in person or by telephone (562) 822-4504. The Race Committee will monitor VHF channel 71.

THE FINISH:

The finish line shall be as described in the Notice of Race. **Yachts racing shall make every effort to illuminate their sail numbers as they finish.** Yachts using sails with numbers other than their official numbers may be subject to protest.

TIME LIMIT:

The race shall be called at 2100. A yacht finishing prior to 2100 shall establish the race for its class. **NO YACHT SHALL FINISH AFTER 2100.** This changes Racing Rule 35.

ALTERNATE PENALTY:

Racing Rule 44 is changed so that the 720 degree turn is replaced by a 360 degree turn.

CONFLICTING INSTRUCTIONS:

If a conflict in wording exists between the Sailing Instructions and the Notice of Race, the Sailing Instructions shall prevail. This changes Racing Rule 63.7.

PROTESTS:

A protest flag shall be displayed from the backstay to signal a protest. A protesting yacht shall notify the protested yacht in accordance with rule 61.1, and then notify the Race Committee at the finish line. Protests shall be written on forms available at Seal Beach Yacht Club and shall clearly state the rule applying to the protest. The **WRITTEN PROTESTS SHALL BE FILED WITH THE PRO, RACE COMMITTEE CHAIRMAN OR PROTEST CHAIRMAN NO LATER THAN ONE HOUR AFTER FINISHING.** An announcement will be posted of the hearing date and time.

SCORING:

The Low Point Scoring System, Appendix A of the racing rules, will apply.

SAFETY REGULATIONS:

All boats shall check in with the Race Committee prior to the warning signal for the first class. A boat that retires from a race shall notify the Race Committee before leaving the Race Area. The race committee shall monitor VHF channel 71.

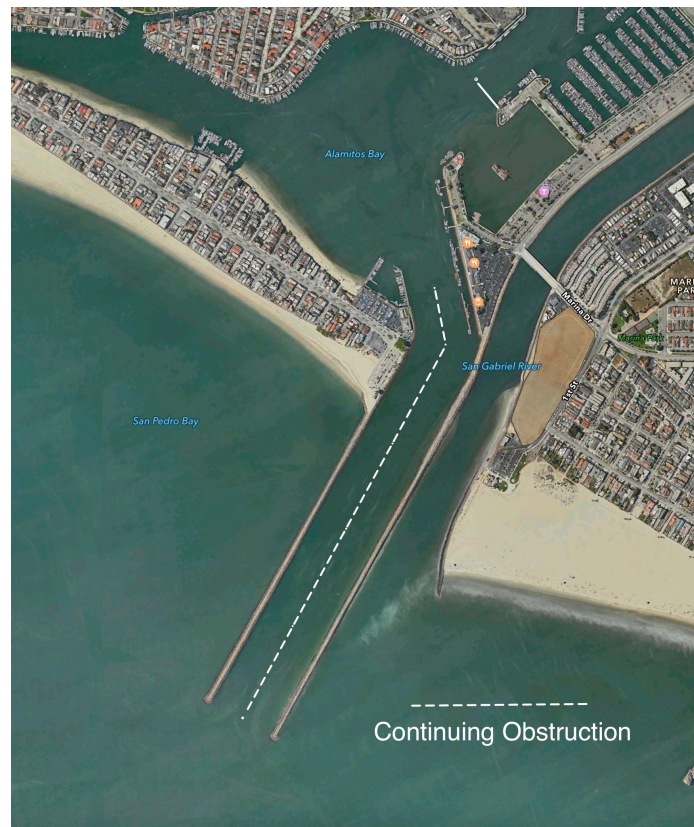
TROPHIES:

Trophies will be awarded at Seal Beach Yacht Club at 1600 on Sunday, April 11, 2021. Trophies will be awarded based on the number of yachts that rank as starters for each class as of 1700 April 9, 2021. 1-4 boats (1 trophy); 5-8 boats (2); 9-11 boats (3); 12-14 (4); 15 or more (5). **Trophies not claimed after the trophy presentation will be held at the Seal Beach Yacht Club for 60 days, after which time they shall be forfeited and revert back to club ownership.**

Contacts: Bob Hubbard (562) 822-4504 or Terry Hanna (714) 840-2383

Sailing Instruction – Continuing Obstruction

Shown below is a graphic of the Ensenada Preview Race - ABM entrance channel continuing obstruction.



“A” Buoy at the entrance to Alamitos Bay Marina (ABM) shall be considered a “Mark” (in addition to being the start of a continuing obstruction) for all Ensenada Preview Race courses. A 3-boat zone shall be in effect for determining “Mark” room at “A” Buoy. This changes Rule 19 for Mark “A” only. “A” Mark shall be passed to port. If “A” Mark is missing, the first center of channel buoy will replace “A” Buoy as the start of the continuing obstruction and will be a “Mark” of the course.

A boat that crosses the “Continuing Obstruction” down the channel entering ABM must take a one-turn penalty after clearing the end of the “Continuing Obstruction” or be subject to protest and disqualification.