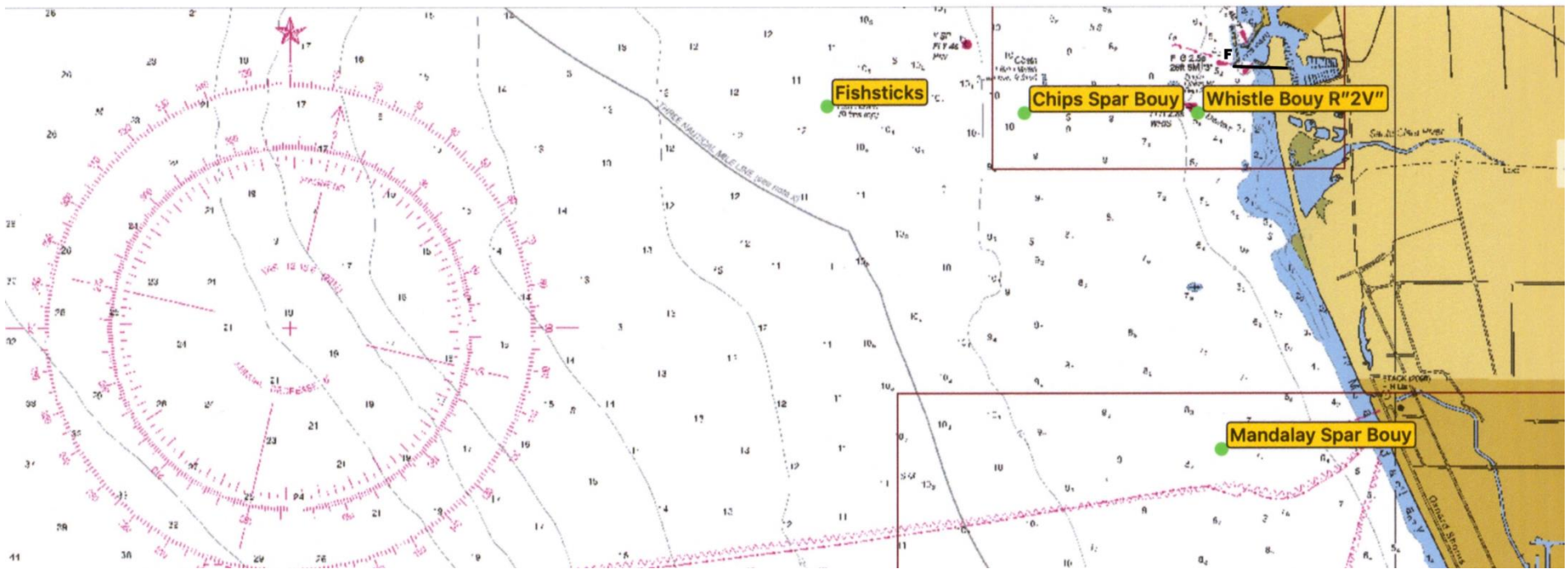




VYC Wet Wednesday Course Chart

Not to be used for Navigation



#	Distance	Heading	Course Marks
1	5.50	257	S Ap F
2	5.38	161	S Mp R2s F
3	9.24	257	S Ap Mp R2s F
4	9.14	161	S Ms As F
5	Varies	Posted on RC	S Tp R2s F
6	Varies	Posted on RC	S Tp R2p Tp R2s F
7	Varies	Posted on RC	S Ts Cs R2s F
8	8.20	257	S Ap Cp Ap F
9	2.80	252	S Cp F
10	5.26	252	S Cp R2p Cp F
11	7.72	252	S Cp R2p Cp R2p Cp F
12	7.98	257	S Ap R2p Cp F
13	6.91	161	S Ms Cs F

MARKS		APPROXIMATE	LOCATION
A	Fish Sticks spar buoy	L: 34° 14.45'N	Lo: 119° 19.86'W
C	Chips spar buoy	L: 34° 14.4'N	Lo: 119° 18.2'W
M	Mandalay spar buoy	L: 34° 12.0'N	Lo: 119° 16.5'W
R2	Vta Whistle buoy R'2V''	L: 34° 14.4'N	Lo: 119° 16.7'W
T	Tetrahedron	Posted on RC	
S	Start in vicinity of Mark R2		
F	Finish near Ventura Harbor Entrance		