



Ventura Yacht Club
1755 Spinnaker Drive, Ventura CA 93001
1-805-642-0426, Fax 1-805-642-0494



Sailing Instructions

2021 Wet Wednesday, April 14th to Sept 15th

1. Rules

- 1.1. **In light of the ongoing Covid-19 pandemic, the County of Ventura has mandated that boats participating in this series must be slipped/docked/stored within Ventura County.**
- 1.2. The series will be governed by the rules as defined in The Racing Rules of Sailing
- 1.3. This series is rated Nearshore Event. Entrants should comply with the US Sailing SER. The following prescriptions of the USS SER have been modified for this series.
 - 1.3.1. USS SER 2.4.4 is in effect and modified to require lifelines even if they are not uncoated Stainless Steel.
 - 1.3.1.1. Aboard all One Design Boats designed to race without lifelines, all crew must wear PFDs and hike only with feet inboard of the torso.
 - 1.3.2. USS SER 3.19.1 is modified to allow compasses such as the TACK TICK and Velocitek Shift (non GPS) magnetic compasses with mounted brackets as long as they are tethered so the device may not be lost overboard.
 - 1.3.3. USS SER Rule 3.8.2 is modified to allow a handheld waterproof VHF or a handheld VHF with a waterproof cover. DSC/GPS capability is not required.
 - 1.3.4. USS SER 3.3.1 is modified to allow running lights that are mounted below deck level (90's and earlier boats).
- 1.4. The responsibility for a boat's decision to participate in a race or to continue racing is hers alone. **RRS 3.**

2. Notice to Competitors and Changes to the SI

- 2.1. Notices will be via email to all competing Skippers/Masters (who are to provide the Race Committee with a current/valid email address) and posted on the Bulletin Board located inside the downstairs patio at VYC.
- 2.2. Oral instructions from the RC on station will be displayed using Code Flag L on the RC boat.

3. Signals made ashore

- 3.1. Signals will be hoisted on the VYC Main flagpole or to one of the side arms accompanied by an audible signal.

4. Schedule of Races

- 4.1. The start signal is scheduled for 1800 each Wednesday
- 4.2. Races are planned for every Wednesday from April 14th to September 15th.

5. Ratings and Classes

- 5.1. Area A PHRF Windward/Leeward (W/L) ratings will be used for rating monohulls. ORCA handicaps will be used for rating multihulls. Boats without ratings should apply to the RC in advance of the races.
- 5.2. Boats may enter only one (1) class for the series and must race in that class for each event in the series.
- 5.3. Ratings will be adjusted for places as follows, for the next race. 1st -6, 2nd -3 and last +6, 2nd from last +3.
- 5.4. Classes will not use the PHRF Non Spin Offset.
- 5.5. Class A: 114 and lower Spinnaker class. No Family Cruising adjustments allowed.
- 5.6. Class B: 115 and higher, Spinnaker class. No Family Cruising adjustments allowed.
- 5.7. Class C: Family/Cruising Non-Spin class, all ratings welcome. Configuration adjustment allowed (use form), Only one main and one headsail allowed off the wind. Staysails are not considered headsails and are allowed.
- 5.8. Class D: Multi-Hulls
- 5.9. Class Flags shall be: A and D = Red, B = Green, Class C = Purple.

6. Race Area

- 6.1. The Start Line will be in the vicinity of the R2 entrance buoy.
- 6.2. Racers are requested to check in as soon as the RC signals that they are on station by sailing past and hailing or by using VHF channel 69.

7. Courses

- 7.1. The course chart is attached to this document. The course for a race will be chosen from this course chart.
- 7.2. The RC shall signal the course for a class no later than the warning signal for that class.
- 7.3. For courses that use an Inflatable, the distances and direction are left to the discretion of the RC and will be posted on the RC boat, no later than the warning for that class.
- 7.4. Marks are described on the course chart.

8. Obstructions

- 8.1. The detached Breakwater is an obstruction per the RRS

9. The Start

- 9.1. Races shall be started using **RRS 26**.
- 9.2. The Start will be between the orange Flag on the RC Boat and the Port/Pin end of the Start Line which may be the R2 buoy or an Inflatable Buoy.
- 9.3. The first start is scheduled for 1800 every Wednesday.
- 9.4. As a courtesy, the RC will sound a series of horns 1 minute before the start sequence.
- 9.5. The RC will use VHF Channel 69.
- 9.6. Recalls
 - 9.6.1. The RC shall as a courtesy attempt to hail boats that are OCS.
 - 9.6.2. The RC is not responsible for hailing boats OCS.

10. Finish Line

- 10.1. The Finish line is a line between a stationary position on the Upper Deck of VYC and the Green Light standard on the South end of the detached Breakwater.
- 10.2. As you approach the finish, it is requested that you notify the RC on Channel 69 of your approach.
- 10.3. Shortly after finishing, it is requested that spinnakers be struck in order to maintain safe maneuverability and legal speed in the harbor.
- 10.4. If foggy, please radio the RC when your bow crosses the finish line.
- 10.5. The RC may contact the last boat after the fleet finishes to allow a boat to motor in and accept a last instead of a DNF.

11. Penalty System

- 11.1. The 2 turn Penalty **RRS 44.2** applies.

12. Time Limit

- 12.1. The RC will abandon the race for a class if no boat in the class has finished by sunset time limit according to RRS 35. Sunset times for WW Races are listed below.

DATE	SUNSET	DATE	SUNSET	DATE	SUNSET
14-Apr	1928	9-Jun	2008	4-Aug	1955
21-Apr	1934	16-Jun	2011	11-Aug	1948
28-Apr	1939	23-Jun	2012	18-Aug	1940
5-May	1945	30-Jun	2013	25-Aug	1931
12-May	1950	7-Jul	2012	1-Sep	1922
19-May	1955	14-Jul	2009	8-Sep	1912
26-May	2000	21-Jul	2006	15-Sep	1902
2-June	2005	28-Jul	2001		

13. Protest and Requests for Redress

- 13.1. Protest shall be filed on a form available at VYC or online. Protests shall be heard as soon as practicable which may not be the same night that the protest was filed.
- 13.2. Protest shall be filed with the RC within 1 hour the protesting boats finish or entering the harbor.
- 13.3. If Redress is awarded for an incident during a race in this series, only the scores in that race and the race before and after that race in the series may be considered for adjustment. This changes **RRS 62** and **A9**.
- 13.4. These items are not grounds for granting redress.
 - 13.4.1. Failure of a boat to hear a recall hail or broadcast.
 - 13.4.2. A boat's position in the sequence of the recall hail or broadcast.
 - 13.4.3. Failure of the RC to hail or broadcast the recall boats' numbers.

14. Scoring

- 14.1. **RRS A4** Low Point Scoring will apply.
- 14.2. **RRS A9** Scoring a Series longer than a Regatta, applies to the WW series.
- 14.3. **RRS A2,1** is modified to allow one discard every 4th race completed per RRS.

15. Safety Regulations

- 15.1. All Owners, Skippers or Charterers shall be responsible for following all US Coast Guard safety regulations and the Safety Equipment Requirements of the National Authority or Class Association unless otherwise modified in these Instructions.
- 15.2. A boat that retires prior to the finish of the days racing and does not intend to continue, shall radio the RC on VHF Channel 69 or call the VYC Office at 1-805-642-0426.
- 15.3. A minimum of 2 people on board is required to race on monohull boats; multihulls may be single-handed .
- 15.4. Each participating boat must have 3rd party insurance. Documentation must be provided upon request.
- 15.5. The RC may require all participants to wear PFD's by flying the Code Flag Y, prior to the start.
- 15.6. **Until otherwise allowed by the VYC Board of Directors (VYCBOD), and as a condition of competition, all competitors must properly wear a facial covering (such as a face mask, buff, or neck gaiter) that completely covers both the nose and mouth while in/on the VYC's premises (including docks).**
- 15.7. **Until otherwise allowed by the VYCBOD, and as a condition of competition, VYC Skippers/Masters with boats docked at VYC must ensure each non-VYC crew member and/or support persons sign a VYC "Guest Waiver" before or upon the entering of VYC's premises (including docks). If the non-VYC crew member or support person is less than 18 years old, the Skipper/Master shall ensure the waiver is signed by the parent or legal guardian of the minor. Each Skipper/Master will retain the requisite waivers and shall promptly produce a copy of that waiver upon demand of the Race Officials or member of the VYC Bridge.**

16. Post-Race and Trophies

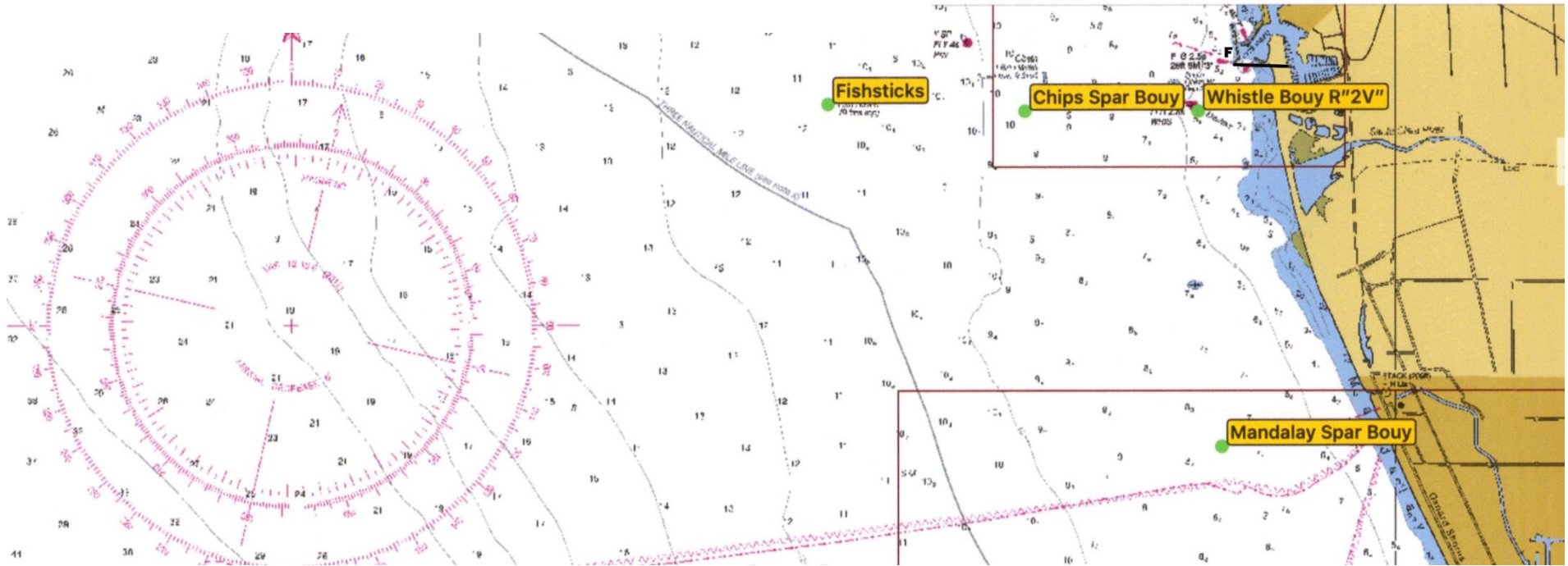
- 16.1. **In light of the ongoing Covid-19 pandemic, until approved by the VYCBOD, there will be no post-race gathering, dinner or trophy presentation. Results will be posted on Regatta Network and distributed via email to competing skippers.**
- 16.2. **If and when approved by the VYCBOD**, after each race there will be a dinner and trophy presentation at Ventura Yacht Club at which all skippers, crew, and guests are welcome.

1. **Questions? Contact PRO Jim Dembowski at (805) 256-0770 or dembowje@pacbell.net.**



VYC Wet Wednesday Course Chart

Not to be used for Navigation



#	Distance	Heading	Course Marks
1	5.50	257	S Ap F
2	5.38	161	S Mp R2s F
3	9.24	257	S Ap Mp R2s F
4	9.14	161	S Ms As F
5	Varies	Posted on RC	S Tp R2s F
6	Varies	Posted on RC	S Tp R2p Tp R2s F
7	Varies	Posted on RC	S Ts Cs R2s F
8	8.20	257	S Ap Cp Ap F
9	2.80	252	S Cp F
10	5.26	252	S Cp R2p Cp F
11	7.72	252	S Cp R2p Cp R2p Cp F
12	7.98	257	S Ap R2p Cp F
13	6.91	161	S Ms Cs F

MARKS		APPROXIMATE	LOCATION
A	Fish Sticks spar buoy	L: 34° 14.45'N	Lo: 119° 19.86'W
C	Chips spar buoy	L: 34° 14.4'N	Lo: 119° 18.2'W
M	Mandalay spar buoy	L: 34° 12.0'N	Lo: 119° 16.5'W
R2	Vta Whistle buoy R"2V"	L: 34° 14.4'N	Lo: 119° 16.7'W
T	Tetrahedron	Posted on RC	
S	Start in vicinity of Mark R2		
F	Finish near Ventura Harbor Entrance		