

Amended SI - June 23, 2021

All coaches must check-in and assure CBYRA coach flag is visible on vessel. Non CBYRA should have burgee.

Coach boats can be launched on premise but the earlier the better. The ramp will be open between 0700 - 0830. Overnight on the pier is available only for coach boats that are defined as a RIB or center console.

2.1 Eligibility includes Laser 4.7

4.0/5.0 All changes to the SI will be amended and available online.

6.4/17.1 Protest time is extended to 45 minutes.

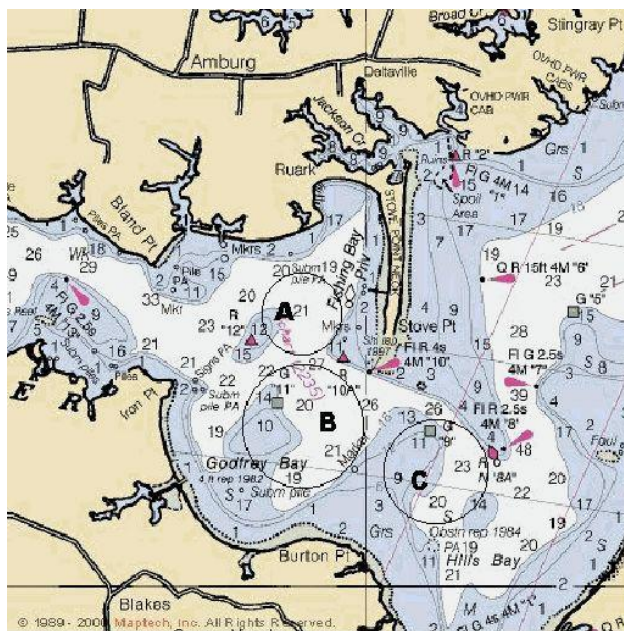
10-10.2 The course is defined however subject to change by the PRO's without update to the SI while on the water.

Lunch will be provided for all sailors and coaches. Coaches after check-in please provide the kitchen with your cooler. Lunch will be random ham and cheese or turkey and cheese with a non-nut based granola bar. Please provide your own ice. Should anyone have any allergic or dietary needs there are a number of sandwich shops in town who can oblige.

Course Information below:

OPTI (RWB) PRO - Parker Garrett
Laser/420/4.7 - Bob Fleck

Course Layout with radio communications:



Course A - Opti Green Fleet

Course B - Opti RWB (channel 71)

Course C - Laser Radial, 4.7, c420 (channel 72)

Lunch will be provided for sailors. It is the responsibility of the coach to check-in with the kitchen with their cooler and own ice and sandwiches will be packaged and ready.