

2022 TYCC Gasparilla Regatta
Tampa, Florida
January 8 & 9, 2022
SAILING INSTRUCTIONS

1 RULES

- The regatta will be governed by the rules as defined in The Racing Rules of Sailing.
- Competitors and boats shall comply with the current USODA, Laser and C420 class rules.

2 ENTRIES

- This event is open to all competitors who meet the eligibility requirements as stated in the Notice of Race and who have filed valid entries in accordance with the Notice of Race.
- Competitors may enter by delivering a completed entry form and paying the entry fee specified in the Notice of Race.
- Entry forms must be completed by the competitor's designated adult representative.
- This regatta will be governed by Rule 3 of the Racing Rules for Sailing. The decision to sail or to compete in any race will be the sole responsibility of the competitor and their designated adult representative.
- The competitor's designated adult representative will accept full responsibility for all actions of the competitor during any activity related to this event.

3 NOTICES TO COMPETITORS

- Notices to competitors will be posted on the official notice board located on the regatta notice board located next to the Dockmaster's office

4 CHANGES TO SAILING INSTRUCTIONS

- Changes to the Sailing Instructions will be posted before 0830-hours on the day it will take effect except that a change in the schedule of races will be posted by 2000-hours on the day before it will take effect.
- SIGNALS MADE ASHORE
- Signals made ashore will be displayed from the flagpole located by the fuel dock of the yacht club.
- If a postponement is signaled ashore, the warning signal will be made not less than 30-minutes after AP is lowered.

5 SCHEDULE OF RACES

- Saturday, January 11:
 - Competitor's meeting: 0900 hrs.
 - First warning signal: 1000 hrs.for Laser/C420 1030 hrs for Optis
- Sunday, November 12
 - First warning signal: 0900 hrs. for Laser/C420 0930 hrs for Optis
 - Last warning signal: On or before 1400 hrs.
- Subsequent races will be held as soon as possible after the end of the previous race.

6 CLASS FLAGS

- Class flags will be posted during the competitor's meetings.
- Any signal directed to one class only will have the class flag displayed at the same time as the signal. Signals without a class flag will apply to all classes.

7 RACING AREA

- The racing area will be in Hillsborough Bay East of Tampa Yacht & Country Club.
- The location of each course will be described in the competitor's meeting.

COURSES and MARKS

- The attached diagrams show the courses, the course designations, the marks in order, and the rounding direction of each mark.
- All marks will be yellow or orange inflatable marks.
- Opti Green Fleet will use Course "T"
- RWB/C420/Laser Fleets will use course "W." Any course change will be signaled before the warning signal of any race by showing the class flag and new course flag.
- To change the next leg of the course, the race committee will move the original mark (or the finishing line) to a new position.

8 STARTS

- The starting line will be between the staff displaying the orange flag on the RC signal boat and the nearby orange starting mark.
- Races will be started in accordance with RRS 26.
- Prior to the first race of each day, competitors shall check in by sailing past the stern of the signal boat and hailing their sail number. Don't just sail by, make sure the signal boat acknowledges that you have checked in.
- Boats whose warning signal has not been made shall avoid the starting area during the starting sequence for other races.
- Boats who fail to start 3-minutes after their starting signal will be scored DNS without a hearing. This changes rules 63.1 and A4.
- The RC may hail premature starters. Failure of the RC to hail a premature starter or a competitor's failure to hear such a hail shall not be grounds for redress; the skipper is solely responsible for starting in accordance with the RRS.

9 FINISHING

- The finishing line will be between the staff displaying the orange flag on the RC signal boat and the nearby orange finishing mark.
- Boats shall not sail through the finish line unless they are finishing. This changes Rule 28.1.

10 TIME LIMIT

- The time limit for each race will be 60-minutes for the first boat to finish.
- Boats failing to finish within 35 minutes after the first boats sails the course and finishes will be scored TLE (Time Limit Exceeded) without a hearing and will receive two more points than the last finisher, but not more than DNF. This changes rules 35, 63.1, A4, A5 and adds to A10.
- If boats are delaying the start of the next race the RC may terminate the race and score those boats in the place they would have finished.

11 PROTESTS

- Competitors intending to protest must display a red flag. This changes Rule 61.1
- Competitors intending to protest must inform the RC of the intention to protest and provide the sail number immediately after finishing the race to be protested and before communicating with coaches, parents, or spectators.
- Written protests shall be delivered to protest committee within 30 minutes of the RC signal boat docking.
- A list of protests received will be posted on the notice board within 30-minutes after the protest time has expired. Hearings will be held as soon as possible after racing each day in the club's ground floor regatta

room or as determined by the protest committee.

12 SCORING

- The Low Point System of Appendix A of the racing rules will apply.
- One completed race will constitute a series.
- When fewer than six (6) races have been completed, a boat's series score will be the total of her race scores. When from six (6) to ten (10) races have been completed, a boat's series score will be the total of her race scores excluding her worst score. When eleven (11) or more races have been completed, a boat's series score will be the total of her race scores excluding her two (2) worst scores.

ENVIRONMENTAL AND SAFETY

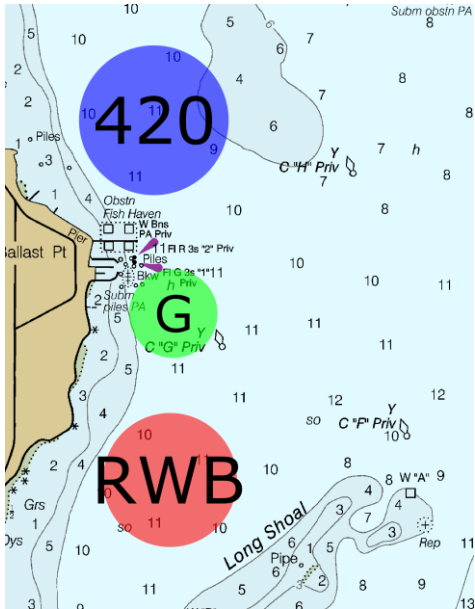
- Competitors shall not discharge trash into the water. Any competitor who throws trash into the water is subject to disqualification. Such disqualification will be posted on the official notice board and any competitor so disqualified may request a hearing.
- A boat retiring from a race shall notify a RC vessel before leaving the course if possible; otherwise a boat retiring from a race shall notify the Regatta Office immediately after arrival ashore.
- Support, spectator, and coach boats shall stay well clear of the course while any race is in progress unless rendering assistance to competitors in danger. If a competitor receives such assistance they shall retire. After the finish, coach, parent and support boats shall not communicate with competitors until they are well clear of the finish area. No wake is permitted within 500 yards of the race course while boats are racing. Violation of any of this part may result in a penalty up to and including disqualification of the competitor or competitors associated with the craft violating this instruction this instruction for the race in which the violation occurs.

TROPHIES

- Overall Opti awards will be given for the top three finishers. Opti Red, Blue and White awards will be given to the top finisher. Participation awards will be given to all Opti Green Fleet sailors.
- Overall awards will be given to the top three finishers for C420, Laser 4.7 and Laser Radial

APPENDIX A

Racing Area



Courses

Green Fleet	Opti RWB/420/Laser
<p>T = Start – 1 – 2 – 3 – Finish</p>	<p>W 1 = Start – 1 – Finish W2 = Start – 1 – 2 – 1 - Finish</p>