



THE 2021 ANNUAL HYC REACH DOWN THE BEACH

SAILING INSTRUCTIONS

Organizing Authority: The Houston Yacht Club Shore Acres, TX USA

To be sailed Friday and Saturday, 07 and 08 May 2021

1. RULES

- 1.1. The current Racing Rules of Sailing (RRS), except as may be modified by these the Sailing Instructions. If there is one-design racing and there is a conflict between Class Rules and the RRS, Class Rules shall apply.
- 1.2. Boats equipped and rated with power winches may use same. This modifies RRS 51.
- 1.3. Boats sailing Single or Double-handed may use autopilots. This modifies RRS 51. Use of autopilots is permitted when more than 500 yards from the start line and up to 500 yards from the finish line. This changes Rule 52.
- 1.4. RRS 41 is hereby modified to allow Single or Double-handed entrants to communicate amongst themselves by VHF Radio.
- 1.5. Between the hours of sunset and sunrise, the rules of Part 2 are replaced with the International Regulations for Preventing Collisions at Sea (IRPCAS).
- 1.6. The US SAILING Prescriptions to the RRS will apply.
- 1.7. The current PHRF Regulations as administered by the PHRF Galveston Bay.
- 1.8. The current US Sailing Safety Equipment Requirements (USSER). These requirements are available at <https://www.ussailing.org/competition/offshore/safety-information/ser-world-sailing-special-regulations/>. A copy of these requirements should be kept aboard while racing. In the event of a conflict between these requirements and applicable class rules, the class rules shall apply.
- 1.9. The current IMS Rule (measurement) and ORC Rating Systems (ratings) rules and regulations. (www.orc.org/rules)
- 1.10. Each boat shall carry an operating VHF radio capable of transmitting and receiving on Channels 13, 14, 16, 68, 72 and a cell phone, the number of which shall be on file with the Race Committee (via your registration).
- 1.11. The Friday race will feature a Pursuit start. This changes Rule 26.
- 1.12. The Saturday race:
 - 1.12.1.1. If there are fewer than 3 entrants in the ORC Spinnaker class by midnight April 29, the class will default to PHRF Galveston Bay spinnaker.
 - 1.12.1.2. The B & B Class in the Saturday race (i.e. race between Freeport and Galveston) will feature a WorldFest Window start. In this style of start, competitors in the B & B Class start within a time window defined in these Sailing Instructions. The exact start time will be of the Skipper's choosing inside that window. The Race Committee will capture the individual start times of each boat. The Race Committee will capture the finish times of each boat and apply the HYC Club Handicap to calculate finish positions. This completely changes RRS 26.
- 1.13. Appendix T1 will apply.
 - 1.13.1.1. Appendix T1.b is modified to read: "A Post-Race Penalty is a 20% Scoring Penalty calculated as stated in rule 44.3(c) if taken before the protest time limit expires. Otherwise, a Post-Race Penalty is a 30% Scoring Penalty calculated as stated in rule 44.3(c). However, rule 44.1(a) applies."
- 1.14. US SAILING Prescription to the RRS Appendix V Rules V1 and V2 will apply.
 - 1.14.1.1. US SAILING Prescription to the RRS Appendix V Rule V2 is modified to read: "After a race, a boat that may have broken one or more rules of Part 2 or rule 31 in an incident while racing may take a Post-Race Penalty for that incident. A boat takes the penalty by delivering a written notice to the race office that identifies the race number and when and where the incident occurred. The penalty shall be a 20% Scoring Penalty, calculated as stated in rule 44.3(c) if taken before the protest time limit expires. Otherwise a 30% Scoring Penalty shall apply, calculated as stated in rule 44.3(c). However, rules 44.1(a) and (b) apply, and the penalty shall not be taken after a protest hearing involving the incident has begun."

2. NOTICES TO COMPETITORS

- 1.2. Notices to competitors will be posted on the Official Notice Board located at (<https://www.regattanetwork.com/event/22159>) or by clicking here: [Regatta Network Event Website](#)
- 1.3. Notices to competitors will be broadcast via VHF at the start line, finish line, and/or announced at the official regatta party in Freeport as appropriate.

3. CHANGES TO SAILING INSTRUCTIONS

- 1.4. Any written changes to these sailing instructions will be distributed by e-mail no later than 9:00 a.m. Thursday 06 May.
- 1.5. Verbal changes may be made on the water and shall be communicated to each boat by VHF before her warning signal.

4. SIGNALS MADE ASHORE

- 1.6. Any decision to abandon race will be announced via cell phone call to the number on record.
- 1.7. Any decision to postpone will be announced via cell phone call to the number on record.



FRIDAY RACE

1. SCHEDULE OF RACES

- 1.2. Scratch start time varies by class, individual start times are as calculated and listed in these sailing instructions.
- 1.3. Each class will sail a single race.

2. RACING AREA

- 2.2. Illustration 1 shows the location of the racing areas.

3. THE COURSES

- 3.2. The diagram in **Illustration 1** shows the course, a straight line to Freeport.
- 3.3. The course will be 42.1 miles in length.
- 3.4. The start is at Galveston Channel marker #11 (N29 20.536 W94 44.472). Sail from Galveston Channel marker #11 to the 5A marker (29° 19.659'N, 94° 41.336'W) 3.0 nm leaving it to starboard.
- 3.5. Sail to the finish in Freeport.

ILLUSTRATION 1

4. MARKS

- 4.2. The starting line is between the Bolivar Roads channel marker green 11 (N29 20.556 W94 44.462) at the port end and an orange flag or banner on the Signal Vehicle (bearing approximately 180°) on the starboard end beach.
- 4.3. In the absence of a signal vehicle, competitors will be crossing the start line when they sight the green 11 marker at exactly 0 degrees.
- 4.4. The first rounding mark is the Galveston 5A marker. Leave it to starboard.
- 4.5. The finish line is between a virtual mark located at N28 56.153 W95 17.118 and the race committee on the beach (N28 56.429 W95 17.609) bearing 300 degrees.

Ver: 5/5/2021

Course length:	42.1 nm
Scratch start time:	8:00 AM

2019 REACH DOWN THE BEACH (RDTB) PHRF FRIDAY START TIMES					
Start	BOATNAME	SAIL #	NAME	RATING	FLEET
8:00:00	Endless Summer	37447	Dmitriy Yegorov	177	PHRF Non-Spinnaker
8:20:21	Jubilee	14	Thomas Keenan	148	PHRF Non-Spinnaker
8:28:04	Other Woman	1	Brantly Minor	137	PHRF Non-Spinnaker
8:32:17	Sirly	657610	Rob Freas	131	PHRF Non-Spinnaker

MULTIHULL CLASS - Club Handicap			
BOAT	RATING	Δ	Start
ChatEau	159.0		8:30:00
Team America	27.0	132.0	10:02:37
Try Me	(24.0)	51.0	10:38:24

Bimini's 'n Barbecues Offshore		
BOAT	PHRF	Starting window is 8:00 to 11:00. We will capture your times.
Renaissance	199.0	
Slow Lane	180.0	

ORC SPINNAKER PREDOMINANTLY DOWNWIND TRIPLE-FACTOR SCORING OPTIONS (42.1 nm)												
Boat	Sail #	Low ≤ 9			Medium = 10 to 13				High ≥ 14			
		#	Δ	Start	Boat	#	Δ	Start	Boat	#	Δ	Start
Bella Vita	41940	756.0		10:00:00	Bella Vita	546.4		10:00:00	Bella Vita	455.4		10:00:00
Hamburg II	51709	729.7	26.30	10:18:27	Hamburg II	518.9	27.50	10:19:17	Outrageous II	438.7	16.70	10:11:43
Outrageous II	12039	716.2	13.50	10:27:55	Outrageous II	517.3	1.60	10:20:24	Hamburg II	429.3	9.40	10:18:18
Bear	61241	693.2	23.00	10:44:03	Deja Vu	507.6	9.70	10:27:12	Bear	411.5	17.80	10:30:47
Deja Vu	35008	692.2	1.00	10:44:45	Bear	496.2	11.40	10:35:11	Deja Vu	404.2	7.30	10:35:54

ORC SPINNAKER PREDOMINANTLY UPWIND TRIPLE-FACTOR SCORING OPTIONS (42.1 nm)

Boat	Sail #	Low ≤ 9			Boat	#	Δ	Start	Boat	#	Δ	Start
		#	Δ	Start								
Bella Vita	41940	757.5		10:00:00	Bella Vita	592.9		10:00:00	Bella Vita	555.9		10:00:00
Hamburg II	51709	733.6	23.90	10:16:46	Outrageous II	573.4	19.50	10:13:40	Deja Vu	539.1	16.80	10:11:47
Outrageous II	12039	731.0	2.60	10:18:35	Deja Vu	572.3	1.10	10:14:26	Outrageous II	535.3	3.80	10:14:26
Bear	61241	719.1	11.90	10:26:55	Hamburg II	557.9	14.40	10:24:32	Hamburg II	512.8	22.50	10:30:13
Deja Vu	35008	705.2	13.90	10:36:40	Bear	550.6	7.30	10:29:39	Bear	509.1	3.70	10:32:48

5. THE START

- 5.2. All boats are to hail the race committee and check in by name and sail number via VHF. Please include the total number of souls on board including the skipper. All skippers are encouraged to send a list of crew names by email (or text message) to the race committee after all are aboard – accuracy is important.
- 5.3. Races will be started pursuit-style per the starting times listed here.
- 5.4. The ORC Spinnaker class start time has been calculated using the Triple Factors as listed on their ORC certificate for Predominantly Downwind or Predominantly Upwind.
 - The Race Committee will send a text message to each skipper before 9am Friday advising which option (upwind/downwind) and factor (High/Medium/Low) will be used.
 - The decision will be based on the forecast for the day provided by our **Official Weather Provider, WRI (Weather Routing Incorporated)** produced by a live, degreed meteorologist, not a mathematical algorithm generated by a free downloadable app.
- 5.5. Official time is GPS time.
- 5.6. The race committee will be monitoring start times. They WILL hail OCS (over early) boats via VHF.

6. THE FINISH is by the Freeport North jetty.

- 6.2. All racers are to hail the race committee on VHF when within 1 mile of the finish line by vessel name.
- 6.3. All racers are to stand by for instructions relating to possible security operations underway in the Freeport Channel.
- 6.4. The race committee will be on station between 1400 and 1800 hours. Any yacht finishing earlier than that shall record her approximate finish time and position relative to other boats in the area. Please turn that information in to the race committee ashore.
- 6.5. **Illustration 2** illustrates the finish area.

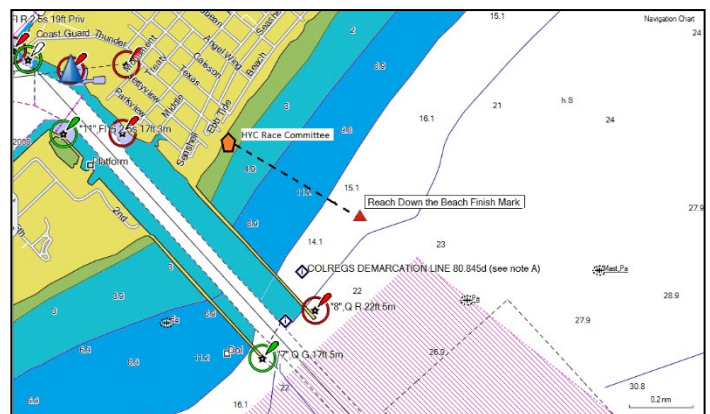


ILLUSTRATION 2

7. TIME LIMITS

- 7.2. The race shall end at 1800 hours CDT, Friday 07 May, or when the last yacht finishes, whichever is earlier. Yachts which have not finished at the expiration of the time limit will be scored TLE without a hearing. This changes rules 35, A4 and A5.

8. PROTESTS

- 8.2. Protest forms are found in **Addendum A** to these Sailing Instructions.
- 8.3. Competitors intending to file a protest must notify the race committee (via VHF or phone) at the first reasonable opportunity.
- 8.4. For each class, the protest deadline is 7:00 p.m. Friday 07 May.
- 8.5. For the purpose of meeting obligations under US Sailing prescriptions concerning redress, notification of a redress hearing shall be by posting on the official notice board for thirty minutes. The requirement for written requests for attendance at the hearing will be satisfied by a signup sheet at the official protest table. No more than one person per boat may attend. No request for reopening a hearing will be accepted after 7 p.m. 07 May.
- 8.6. All notices and hearings will be announced at the regatta party, Bridge Harbor Marina.

9. SCORING

- 9.2. The Low-Point Scoring system, Appendix A, shall apply.
- 9.3. One race is required to be completed to constitute a series.
- 9.4. No scores shall be excluded. This changes rule A2

10. SAFETY REGULATIONS

- 10.2. Any yacht that starts, and then retires or withdraws before finishing the race shall notify the Race Committee on VHF or cell phone or if that is not possible the Houston Yacht Club office (phone number 281.471.1255).

11. COMMUNICATIONS

- 11.2. The official regatta channel shall be VHF Channel 68.
- 11.3. The Race Committee will also be available by telephone at 832.428.0785 (PRO)
A secondary phone number is: 281.910.0942 (Chief Judge)
- 11.4. All yachts are encouraged to monitor channel 16 when offshore and to communicate potential hazards to other racers.
- 11.5. All yachts are encouraged to monitor VHF channel 13 when in the Houston Ship Channel
- 11.6. All yachts are encouraged to monitor VHF channel 14 when in the Freeport Channel for instructions from the harbor pilots. The Event Chairman is available by email (billvanrav@gmail.com) and cell phone (832) 429-0785

12. PRIZES

- 12.2. Trophies will be awarded based on final registration volumes.
- 12.3. Registrations received after the trophy order has been placed shall be awarded IOU's in place of the actual trophy
- 12.4. The race committee shall deliver owed trophies at a mutually agreeable time and place at a later date.
- 12.5. Prizes will be awarded Friday at Captain Ken's Port 'O Call, Bridge Harbor Marina TX.

13. INSURANCE

- 13.2. Each participating boat shall be insured with valid third-party liability insurance with a minimum cover of \$300,000 per incident or the equivalent.

14. USE OF ENGINES

- 14.2. Engines may be used in an emergency. After the emergency is resolved, competitors are to return to the closest point possible to where the engine was initially engaged and continue the race.
- 14.3. Engines may be used to charge batteries.
- 14.4. Use of engines is prohibited except as permitted above.

15. PROHIBITED EQUIPMENT

- 15.2. Use of electric winches is prohibited except as stated in section 1.2 above.
- 15.3. Use of a self-steering system is prohibited except as stated in section 1.3 above.

16. HANDICAPS

- 16.2. All PHRF Pursuit class yachts must be handicapped by PHRF Galveston Bay for 2021.
- 16.3. All ORC Pursuit class yachts must have a current 2021 ORC certificate.
- 16.4. All TOMA Pursuit class yachts must be handicapped by the Texas Offshore Multihull Association.
- 16.5. All HYC Club Handicap (i.e. B&B) yachts shall be rated by the Race Committee.

ADDENDUM A: PROTEST FORM – LAST PAGE

SATURDAY RACE

1. SCHEDULE OF RACES

- 1.1. No warning signal before 8:00 a.m. The starting sequence will be as described in section 6 below.
- 1.2. Each class will sail a single race

2. CLASS FLAGS and STARTING SEQUENCE

- 2.1. 1st START TOMA MULTIHULL: **Pink**
- 2.2. 2nd ORC CLUB SPINNAKER: **Navy**
- 2.3. 3rd PHRF NON-SPINNAKER: **Brown**
- 2.4. 4th B&B 30 Minute Start Window: **Lt. Blue**

3. RACING AREA

- 3.1. Illustration 3 shows the location of the racing areas.

4. THE COURSES

- 4.1. The diagrams in the Course Option Illustrations section show the courses, including the order in which marks are to be passed. All marks are to be left to port.

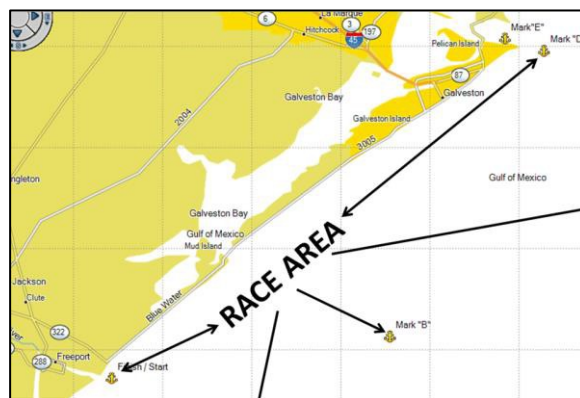
4.2. TOMA, ORC CLUB SPINNAKER, PHRF NON-SPINNAKER CLASSES

ILLUSTRATION 3: RACE AREA

- 4.2.1. For the TOMA, ORC and PHRF classes there are three course options. These options are numbered 1 – 3 and will be signaled by a numeric flag no later than the warning signal for the class.

4.3. B&B OFFSHORE CLASS

- 4.3.1. The B&B Class will sail a straight line between the Freeport starting area and the Galveston 5A marker.



Course Option 1					
From	To	Description	Leave mark to:	Distance	Bearing
Starting area	A	Freeport Outer Buoy "Fp",Mo	Port	4.0	145°
A	B	TABS Buoy B	Port	18.6	70°
B	F	GA 5a	Port	23.5	28°
F	G	GA 11 finish line		3.0	
Total distance:				49.1	

Course Option 2					
From	To	Description	Leave mark to:	Distance	Bearing
Starting area	A	Freeport Outer Buoy "Fp",Mo	Port	4.0	145°
A	B	TABS Buoy B	Port	18.6	70°
B	D	High Island 179A AWOS (Apache Corp)	Port	23.2	60°
D	F	GA 5a	Port	12.3	315°
F	G	GA 11 finish line		3.0	
Total distance:				61.1	

Course Option 3					
From	To	Description	Leave mark to:	Distance	Bearing
Starting area	B	TABS Buoy B	Port	20.5	80°
B	F	GA 5a	Port	23.3	30°
F	G	GA 11 finish line		3.0	
Total distance:				46.8	

5. MARKS

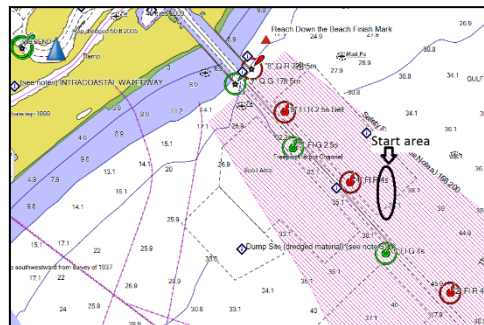
5.1. The starting pin will be an orange floating object.

5.2. The finish pin will be mark G (GALVESTON 11) described below.

The Marks...		Lat/Lon hddd°mm.mmm'	Lat/Lon hddd°mm'ss.s"
A	Freeport Outer Buoy "Fp",Mo	N28 52.628 W95 14.140	N28 52 37.7 W95 14 08.4
B	TABS Buoy B	N28 58.938 W94 53.943	N28 58 56.0 W94 53 56.0
C	Buckaneer GA 288 C	N28 53.648 W94 42.263	N28 53 38.9 W94 42 15.8
D	Station KXIH - High Island 179A AWOS (Apache Corp)	N29 10.800 W94 31.267	N29 10 48.0 W94 31 16.0
E	Heald Bank Rig MEHI-H1199-A	N29 08.018 W94 11.758	N29 08 01.1 W94 11 45.5
F	GA 5a,Iso G 6s 30ft 6m Ra Ref	N29 19.639 W94 41.264	N29 19 38.3 W94 41 15.8
G	GA 11 FI G 2.5S	N29 20.556 W94 44.462	N29 20 33.4 W94 44 27.7

6. THE START

- 6.1. TOMA, ORC and PHRF races will be started per RRS rule 26.
- 6.2. The B&B Class will start during a thirty minute window. The window “opens” when the class flag is raised with 1 horn. It “closes” after 30 minutes have elapsed. Boats may start any time in this period.
- 6.3. The starting line will be between a staff flying an orange flag on the signal boat and the course side of the starting pin.
- 6.4. Boats whose warning signal has not been made shall avoid the starting area during the starting sequence for other races.
- 6.5. A boat starting later than 5 minutes after her starting signal will be scored Did Not Start without a hearing. This changes rule A4.
- 6.6. Official time is GPS time.
- 6.7. **CONTINGENCY PLAN:** We have hired a professional charter boat and Captain to be our signal boat. SHOULD THIS PLAN FAIL, and we have no boat - we will employ an elapsed time and distance handicap race format (we CAN'T race inside the channel)..
 - 6.7.1. There will be a skipper's meeting on the 3 docks in Freeport to announce and review the contingency plan.
 - 6.7.2. Boats will proceed to the area in front of the container terminal with no escort vessel and wait.
 - 6.7.3. A volunteer boat will hail Brazos Pilot on VHF 14, announce they are the sailboat race, the number of boats and that they travel at 7 to 8 knots. Brazos Pilot will issue instructions on how to proceed.
 - 6.7.4. As boats motor up the jetties, they will prepare their sails.
 - 6.7.5. The Race Committee will be on station at the end of the North Jetty. The Race Committee will announce the course number for the different classes by VHF. Do not approach the rocks trying to see a flag.
 - 6.7.6. The contingency starting line is between red 6 and red 8. As boats are ready, they are to cross this line in no order, with NO overlap and at least 30 seconds between boats. This is so the Race Committee may record your exact sail number and start time.
 - 6.7.7. As they approach the starting line boats are to shift their transmissions into neutral but leave the engine running.
 - 6.7.8. At this point boats will have started.
 - 6.7.9. After they start, boats may shut off their engines as desired.
 - 6.7.10. **FOR THE SPINNAKER BOATS ONLY:** If the wind direction is appropriate spin boats will be assigned a windward beat which takes them to the Freeport Outer Buoy. In this situation the spinnaker boats will assemble on the North side of the North Jetty in their own starting area and await instructions from the Race Committee.
 - 6.7.11. To reach the special spin starting area it is permissible to cross the line between red 8 and red 6 so long as rule 6.6.6 is complied with above.
 - 6.7.12. The Race Committee will select a starting line based on a compass bearing. When the starting area is clear the Race Committee will calculate a look-back angle and announce it to the spinnaker boats.
 - 6.7.13. At this point spinnaker boats will start as per instruction 6.6.6 to 6.6.9.



7. THE FINISH

- 7.1. The finish line will be between an orange flag or banner on the official signal vehicle on the beach (bearing = 215 °) and the course side of the finish pin.
- 7.2. Please attempt to hail the race committee via VHF to alert them to your presence at the mark.
- 7.3. If the race committee is absent when a boat finishes, she should report her finishing time, and her position in relation to the rest of the fleet (as best as she can determine), to the race committee at the first reasonable opportunity.

8. PENALTY SYSTEM

- 8.1. Please see section 1.13 and 1.14, above.

9. TIME LIMITS

- 9.1. The race shall end at 0800 hours CDT, Sunday 09 May 2021, or when the last yacht finishes, whichever is earlier.

- 9.2. Yachts which have not finished at the expiration of the time limit will be scored Did Not Finish without a hearing. This changes rules 35, A4 and A5.

10. PROTESTS

- 10.1. Protest forms are found in Addendum A to these Sailing Instructions. Protests and requests for redress or reopening shall be delivered to the HYC Office within the appropriate time limit.
- 10.2. Competitors intending to file a protest must notify the race committee (by VHF or 832.428.0785) at the first reasonable opportunity.
- 10.3. For each class, the protest deadline is 10:00 a.m. Sunday 09 May.
- 10.3.1. Should a competitor be unable to reach the HYC office before the protest deadline expires, a photograph of the front and back of the signed protest form will be accepted by the protest committee via e-mail. This email must be time-stamped before the time limit expires. If it is time stamped after the time limit has expired the protest will be found invalid. The signed original of the protest form must be turned in to the protest committee before any hearing can take place.
- 10.4. All notices will be posted on the HYC Official Notice board in the breezeway next to the HYC offices.
- 10.5. Notices will be posted no later than 30 minutes after the deadline to inform competitors of hearings in which they are parties or named as witnesses.
- 10.6. Hearings will be held in the protest room and time as posted by the protest committee.
- 10.7. Notices of protests by the race committee or protest committee will be posted to inform boats under rule 61.1(b).
- 10.7.1. Please see sections 1.13 and 1.14, above.

11. SCORING

- 11.1. The Low-Point Scoring system, Appendix A, shall apply.

12. SAFETY REGULATIONS

- 12.1. Prior to the first warning signal, each yacht shall check-in with the Race Committee. The procedure shall be to sail within line of sight of the Race Committee, hail on channel 68 and repeat your sail number, yacht name, and the number of crew on board until acknowledged by the R/C.
- 12.1.1. Skippers are encouraged to e-mail or text the team roster to the race committee in advance.
- 12.2. Any yacht that starts, and then retires or withdraws before finishing the race shall notify the Race Committee on VHF channel 68, cell phone (832.428.0785) or if that is not possible the Houston Yacht Club office (phone number 281.471.1255). Please do this...

13. COMMUNICATIONS

- 13.1. The official communications channel is VHF channel 68.
- 13.2. The Race Committee will also be available by telephone at 832.428.0785 (PRO) or 281.910.0942 (Chief Judge).
- 13.3. Email communications:
- 13.3.1. Protest Committee: jjgrills@gmail.com
- 13.3.2. Race Committee: billvanrav@gmail.com
- 13.4. While offshore, all yachts are encouraged to monitor channel 16 and to communicate potential hazards to other racers.
- 13.5. All yachts should also monitor VHF Channel 13 when in the vicinity of the Houston Ship Channel for commercial traffic concerns.

14. PRIZES

- 14.1. The Carroll Blanchard perpetual trophy will be awarded to the boat finishing first in the Spinnaker Class.
- 14.2. Trophies will be awarded based on final registration volumes.
- 14.3. Registrations received after the trophy order has been placed shall be awarded IOU's in place of the actual trophy.
- 14.4. The race committee shall deliver owed trophies at a mutually agreeable time and place at a later date.
- 14.5. Prizes will be awarded Sunday May 09 at 1:00 p.m. at the Porthole Poolside Patio bar. Bring swimsuits, prepare for a pool party.

15. INSURANCE

- 15.1. Each participating boat shall be insured with valid third-party liability insurance with a minimum cover of

\$300,000 per incident or the equivalent.

16. USE OF ENGINES

- 16.1. Use of engines is prohibited except as permitted in section 1.5. AND 10.6.7
- 16.2. Engines may be used to charge batteries
- 16.3. Engines may be used in an emergency situation. After the emergency is resolved, competitors are to return to the closest point possible at which the engine was engaged and continue the race.

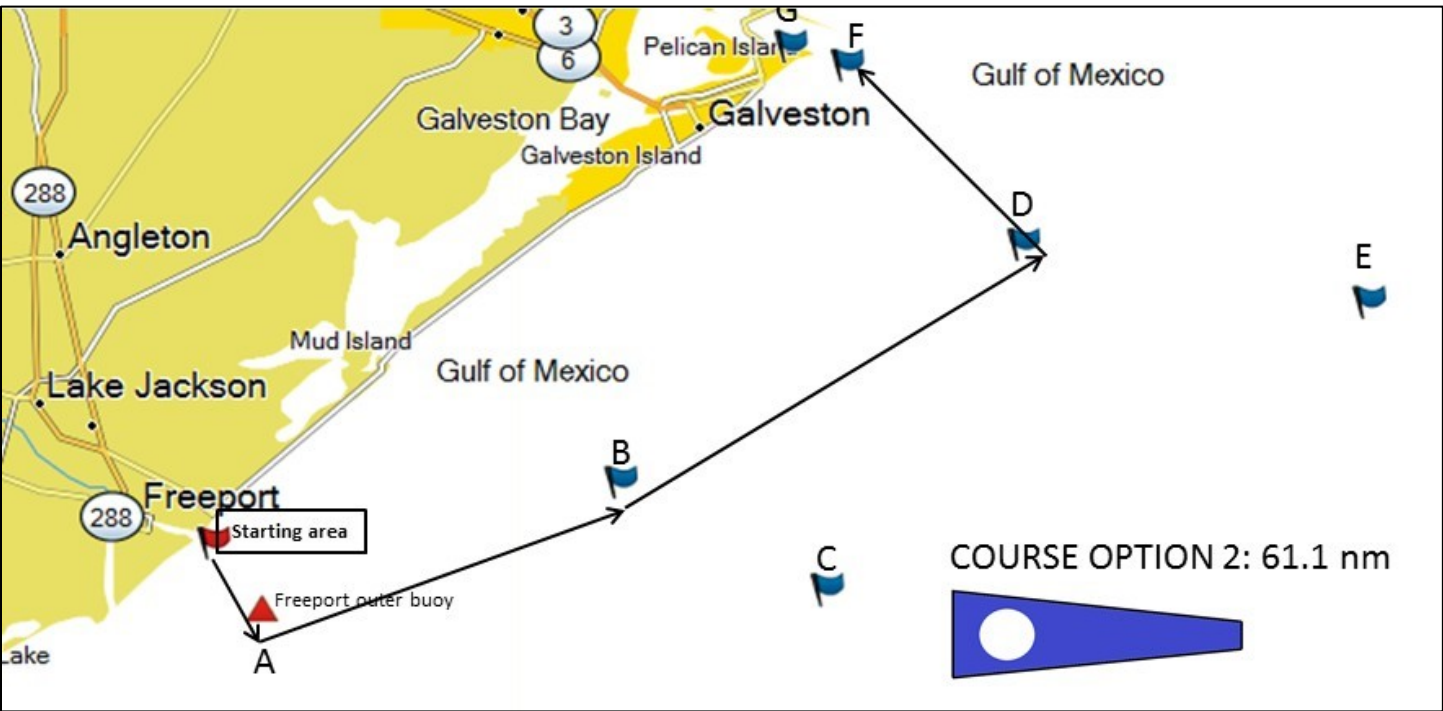
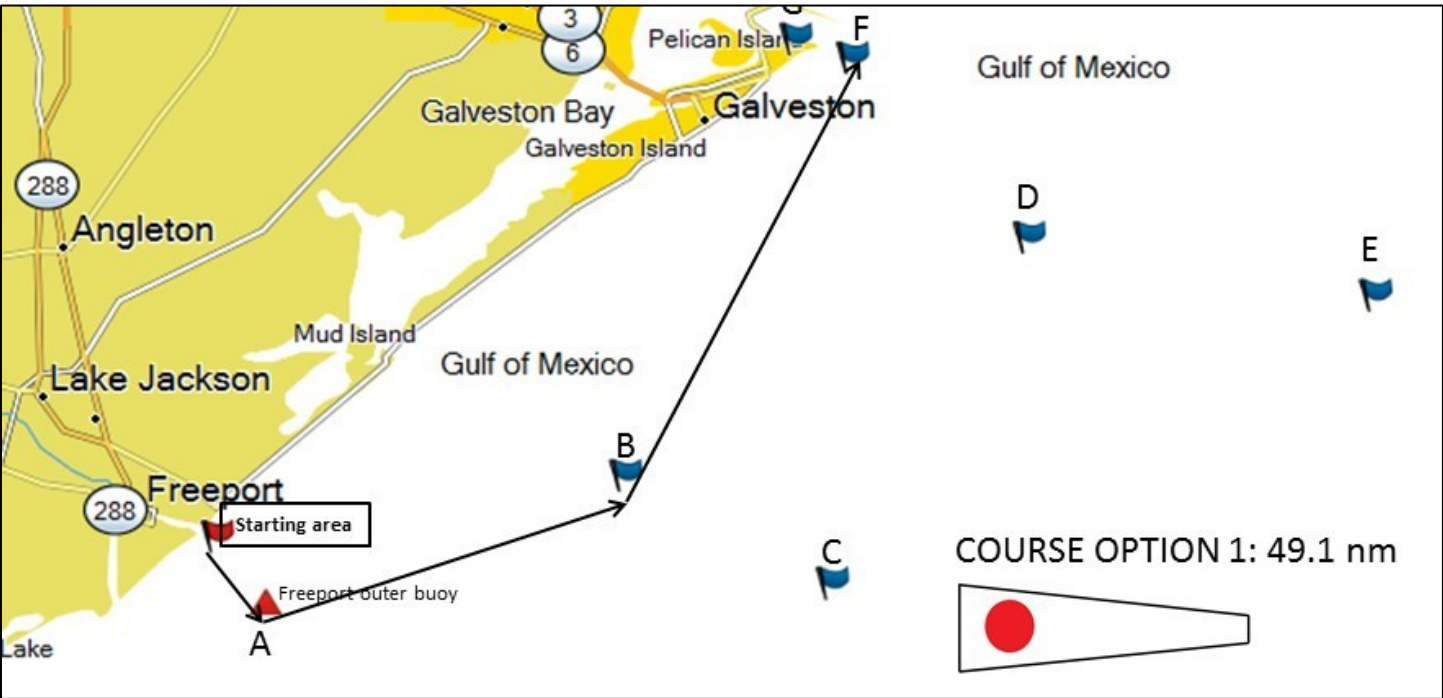
17. PROHIBITED EQUIPMENT

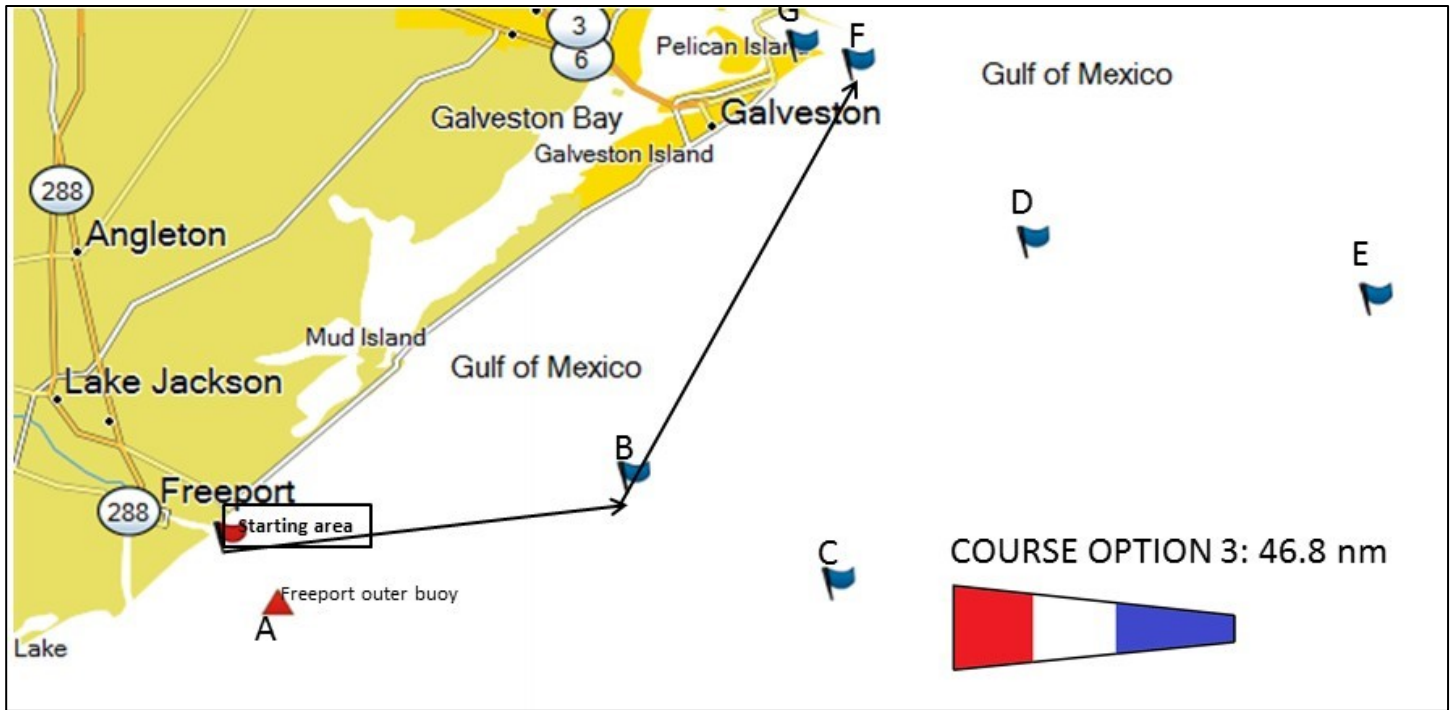
- 1. Use of electric winches is prohibited except as stated in section 1.2 above.
- 2. Use of a self-steering system is prohibited except as stated in section 1.3 above.

18. HANDICAPS

- 18.1. All PHRF Non-Spinnaker class yachts must be handicapped by PHRF Galveston Bay for 2021.
- 18.2. All ORC Club Spinnaker class yachts must have a current 2021ORC certificate.
- 18.3. All TOMA Pursuit class yachts must be handicapped by the Texas Offshore Multihull Association.
- 18.4. All HYC Club Handicap yachts shall be rated by the Race Committee.

19. COURSE OPTION ILLUSTRATIONS





ADDENDUM "A" NEXT PAGE



HEARING REQUEST

for **protests**, requests for
redress, and **reopening**

FOR COMMITTEE USE

Time & date received _____ Rec'd by _____
Protest time limit _____ Filing # _____

Race # Day/Date of Race

Event/Series

--	--	--

Type of Hearing

☐ Protest

☐ Redress

☐ Reopening

Boat or Committee Protesting or Requesting

Making allegation, claim, or request

Boat (sail # / name)

-OR- Committee

Represented by

Mobile

Email

Protestee(s) or Committee/Body

Alleged to have broken a rule, or made an improper action or omission

Boat (sail # / name)

Boat (sail # / name)

Boat (sail # / name)

Boat (sail # / name)

-OR- Committee/Body

For a protest only, informing the protestee How did you inform the other boat of your intent to protest?

If "Yes" when (for each)?

By hailing?

☐ No ☐ Yes

Words used?

By displaying a red flag?

☐ No ☐ Yes

Some other way?

☐ No ☐ Yes

Where / how?

The incident

For a protest: When and where did it happen? (e.g. 1/2 way along first upwind leg, pre-start just below pin, etc.)

For protests, please describe the incident. For redress or reopening, please state the reasons.

Rules alleged to have been broken

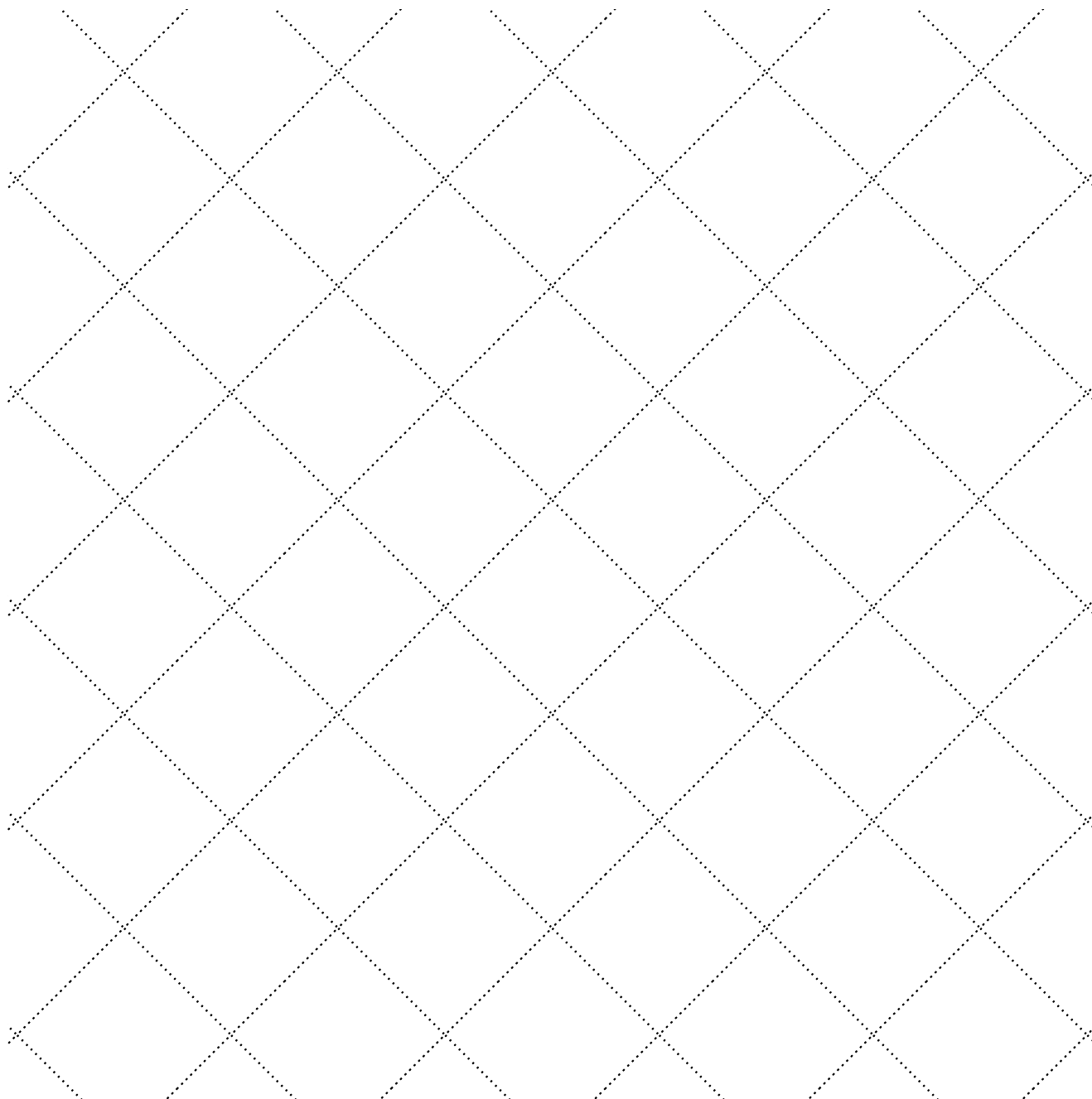


HEARING REQUEST

(continued)

For either a protest or a request for redress or reopening (if relevant)

Diagram Include wind and current (**or** continue the description of the incident and/or reasons)



Witnesses Please list by name

--

USE ONLY TO WITHDRAW FILING

I request to withdraw this filing

.....
Signature of representative

Print name

Filing withdrawal approved

.....
Signature of PC member

Print name