

# 2021

## Yacht Racing Association of Long Island Sound Captain Harbor Sunday Series

### One Design Racing – Sailing Instructions

- RULES**
- This Series will be governed by rules as defined in The Racing Rules of Sailing (RRS), and the prescriptions of U.S. Sailing, the Ideal 18 and Laser (ILCA) class rules, and the class rules of any other one-design class that chooses to compete.
  - Lasers may substitute non-class legal sails, hull, or parts that are built according to the ILCA handbook and builders manual. The equipment must be mass produced and readily available.
- NOTICES**
- General notices shall be posted to the regatta's website <http://bit.ly/yrasundays> and emailed to registrants. Onshore cancellations will be texted by 1300 to the phone number provided during registration
- CHANGES TO THE SAILING INSTRUCTIONS**
- Any change to this document will be posted before 2400 of the Wednesday proceeding the day it will take effect. Any such changes will be communicated to the class representatives (see Appendix A). Oral changes to the sailing instructions may be made on the water per RRS 90.2(c).
- ENTRIES**
- The series is open to all boats of the Ideal 18 and Laser (ILCA) classes. Other one-design classes with a minimum of three starters will be permitted to race, if they have notified the Organizing Authority at [yrasundays@gmail.com](mailto:yrasundays@gmail.com) a week in advance. Each class shall be responsible for setting any eligibility and/or entry requirements. All skippers shall register online in advance of their first start through Regatta Network, at <http://bit.ly/yrasundays>
- SCHEDULE**
- Racing will be held Sundays May 16\* to August 29 except May 30, June 20, July 4, and August 8. June 27 will be hosted by OGYC as part of the Solstice Regatta. \*No Laser racing May 16.
  - Participating classes may choose to not race on specified days. Any non-sailing days will be communicated by fleet representatives to their members and that day's race committee.
  - The starting sequence of the first warning shall be 1400 for one-design vessels. Races will start as soon as possible after the last vessel finishes.
  - No warning signal shall be made after 1700
  - As many races shall be run each race day as practicable
- RADIO COMMUNICATIONS**
- The race committee may use VHF Channel #65A to make course and OCS announcements. Failure to make such a hail, failure of a boat to hear such a hail or the order of hailing, shall not be grounds for redress.
- RACING AREA**
- The racing area will be ¼ NM southeast of Red Rock in Captains Harbor. PHRF racing may include Long Island Sound.
  - The starting line shall be between a staff displaying a colored flag on the signal boat on the starboard end and a mark on the port end.
  - The finishing line shall be between a staff displaying a colored flag the port end and a mark (T) on the starboard end.
  - The Start / Finish line is open and may be disregarded when not starting or finishing.

<b>STARTING PROCEDURES</b>	<ul style="list-style-type: none"> <li>• A three minute sequence will be given per RRS Appendix U. Boats whose warning signal has not been made shall avoid the starting area during the starting sequence for other races. Failure to do so can result in disqualification by the race committee without a hearing.</li> <li>• A boat starting later than five minutes after her starting signal will not be scored. This changes rule A4.</li> </ul>
<b>CLASS FLAGS &amp; NUMBER ASSIGNMENTS</b>	<ul style="list-style-type: none"> <li>• Class flags / number: Ideal 18 – 1; Lasers – 2. Any additional classes shall be given a class flag/number assignment on the water.</li> </ul>
<b>COURSE AND MARKS</b>	<ul style="list-style-type: none"> <li>• Courses will be announced orally and may be posted. Courses may reference Appendix A.</li> <li>• All marks shall be left to port.</li> <li>• A boat that passes north of Red Rock buoy or New Foundland Reef buoy or south of Hens and Chickens Can C-1A or Cormorant Reef Nun 4 shall be deemed to have not sailed the course and may be protested by other boat. If observed having done so by the race committee, such boat shall be disqualified without a hearing.</li> </ul>
<b>TIME LIMIT</b>	<ul style="list-style-type: none"> <li>• The time limit for the first boat to finish for any class is 45 minutes.</li> <li>• Boats that fail to finish within ten minutes after the first boat in their class sails the course and finishes (the time limit window) will be scored time limit expired (TLE).</li> <li>• Boats scored TLE will be awarded a finish equal to the last boat in her class that finished within the time limit window made worse by two but not worse than DNF. This changes rules 35, A4 and A5.</li> </ul>
<b>PENALTIES</b>	<ul style="list-style-type: none"> <li>• The first two sentences of rule 44.1 are changed to: A boat may take a One-Turn Penalty when she may have broken a rule of Part 2 or rule 31 while racing. However, when she may have broken a rule of Part 2 while in the zone around a mark other than a starting mark, her penalty shall be a Two-Turns Penalty.</li> <li>• RRS Appendix V2, Penalty Taken After a Race applies whereby a boat may make a post-race penalty of 30% per rule 44.3(c) but shall not be taken after a protest hearing involving the incident has begun.</li> </ul>
<b>PROTESTS</b>	<p>Boats shall announce their intention to protest as soon as possible at the end of the race and repeat such announcements until acknowledged by the Race Committee.</p> <ul style="list-style-type: none"> <li>• Protests shall be in writing using a Protest Form, such as the one that can be found at <a href="http://bit.ly/yrasundays">http://bit.ly/yrasundays</a>, photographed and emailed to <a href="mailto:yrasundays@gmail.com">yrasundays@gmail.com</a> by 2000 of the race day</li> <li>• Per Appendix T, arbitration will be held prior to a protest hearing subject to the terms of the Section.</li> <li>• Hearings will be held at the Club of that day's race committee at 2000 on the Wednesday following unless the parties agree to an alternative time and/or date.</li> </ul>
<b>SCORING</b>	<ul style="list-style-type: none"> <li>• Prior to the first warning on any race day, competitors shall check-in and receive acknowledgment from the Race Committee by providing the vessel number and/or skipper name and club affiliation. Failure to check-in may result in the vessel not being scored.</li> <li>• The Ideal 18 skipper of the first race shall check in with the Race Committee with his/her first and last name. A second skipper on the same boat shall, by the end of the race day, email <a href="mailto:yrasundays@gmail.com">yrasundays@gmail.com</a> to provide the race numbers in which he/she skippered</li> </ul>

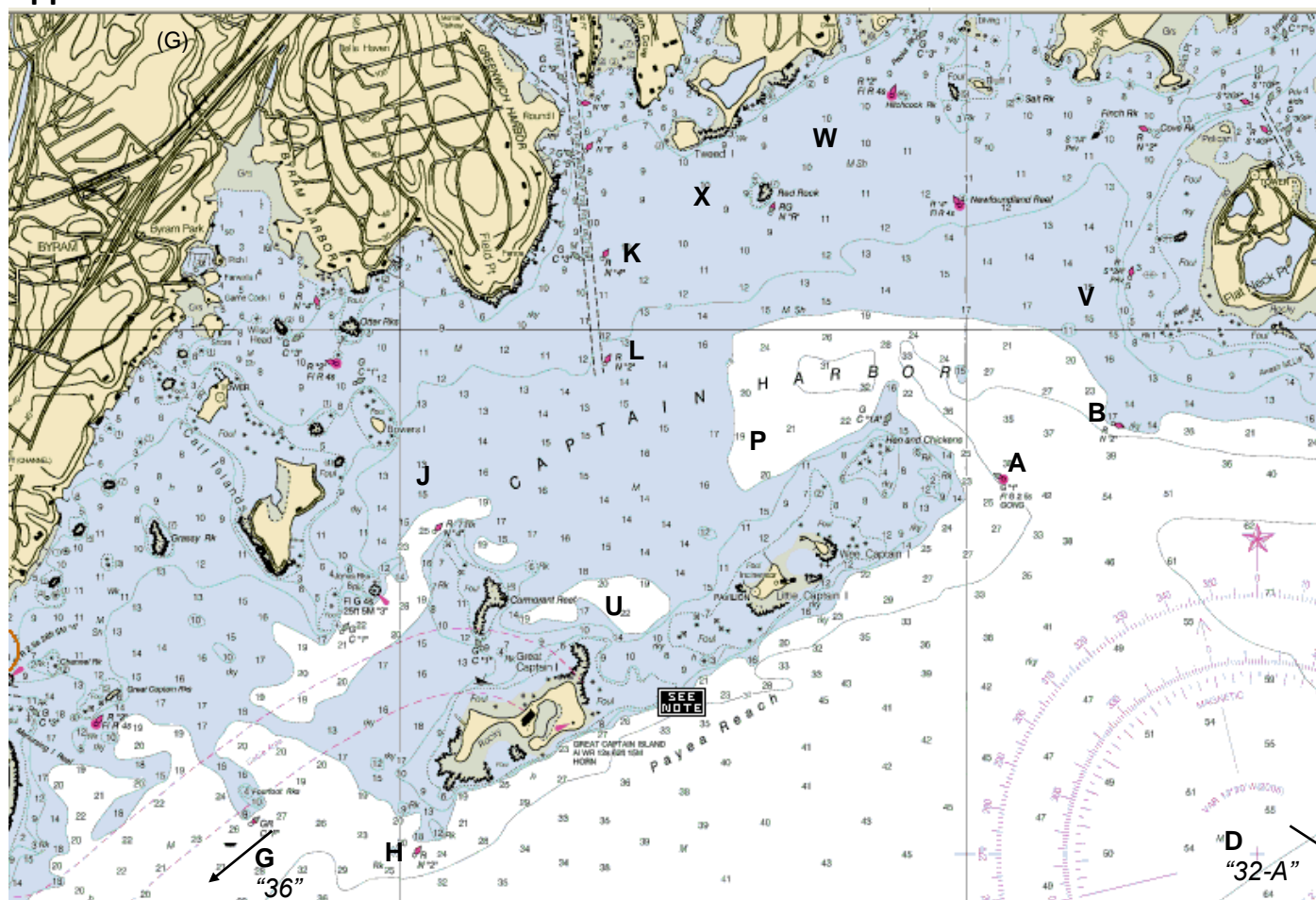
- QUALIFICATION**
- Skippers shall complete a race on 40% of the race days, rounded down to the nearest whole number. A qualifying race day is a scheduled race day in which at least one race is completed
  - YRA competitors shall maintain a current membership at YRALIS. Visit [www.yralis.org](http://www.yralis.org) for instructions
- PRIZES**
- YRA competitors in fleets with a sufficient number YRA member qualifiers will be awarded prizes by YRALIS
  - Most Improved, Most Participation Awards and qualification gifts will be presented at an awards dinner at RYC in the Fall
  - Additional prizes may be awarded by the individual fleets or participating Clubs. Contact your Fleet Captain for more details
- DISCLAIMER OF LIABILITY**
- The responsibility for a boat's decision to participate in a race or to continue  racing  is hers alone. The organizing authorities will not accept any liability for material damage or personal injury or death sustained in conjunction with or prior to, during, or after the series.
  - Upon registering, skippers shall agree to a formal waiver.
- 
- |                       |                          |                |                               |
|-----------------------|--------------------------|----------------|-------------------------------|
| <b>HOST CLUBS</b>     | Belle Haven Club         | Edward Nunes   | nunesed@nyspi.columbia.edu    |
| <b>CONTACTS AND</b>   | Indian Harbor Yacht Club | Mike McCormick | regatta@indianharboryc.com    |
| <b>FLEET CAPTAINS</b> | Riverside Yacht Club     | Will Morrison  | racecommittee@riversideyc.org |
|                       | Old Greenwich Yacht Club | EJ Haskell     | ejbouslough@gmail.com         |
|                       | Ideal 18 Fleet Captain   |                |                               |
|                       | Laser Fleet Captain      | John Killeen   | glrfleetcaptain@gmail.com     |

**Important --- PRO Toolkit --- Important**

Get links to the scratch and scoring sheets, onshore cancellation procedure, everything you need

<https://bit.ly/yrasundays>

## Appendix A: Fixed Marks



### Fixed Marks

<b>A</b> Gong 1 northeast of Wee Captain Island	<b>K</b> N4, Greenwich Harbor	<b>Q</b> Inflatable mark approximately 0.25 nm to leeward of the start	<b>V</b> Fixed RYC mark west of Sugar Boat
<b>B</b> N2, Flat Neck Point	<b>L</b> N2, Greenwich Harbor	<b>R</b> Fixed BHC mark south of Belle Haven Club	<b>W</b> Fixed RYC mark 0.25 nm ENE of Red Rock
<b>C</b> Inflatable mark approximately 1.50 nm to windward of the start	<b>M</b> Inflatable mark to the port side of the starting line	<b>S</b> Inflatable mark approximately 0.75 nm to windward of the start	<b>X</b> Fixed IHYC mark SW WSW of Red Rock
<b>D</b> Gong 32-A	<b>N</b> Inflatable mark approximately 0.50 nm to leeward of the start	<b>T</b> The finish mark located on the opposite side of the start boat from the starting line	<b>Y</b> Inflatable mark approximately 0.50 nm to windward of the start
<b>G</b> Bell 36, Bluefish Shoal	<b>O</b> Inflatable mark approximately 100 feet to windward of the starboard end of the starting line	<b>U</b> Fixed IHYC mark NNE of Great Captain Island lighthouse	<b>Z</b> Inflatable mark approximately 1.00 nm to windward of the start
<b>H</b> Nun 2, west of Great Captain Island	<b>P</b> Fixed mark north of Wee Captain Island		
<b>J</b> Fixed IHYC mark off Calf Island			

#### Exceptions:

Government marks shall be passed on the channel side unless used as a mark of the course, with the following exceptions:

- Marks B, D, K and L may be passed on either side at the discretion of the skipper when not used as a turning mark
- Can C-3, west of Mark K, may be disregarded and left on either hand
- The channel between Cormorant Reef and Great Captain Island shall not be used
- Red Rock buoy and Newfoundland Reef buoy shall be passed on the south side
- Hen & Chickens buoy 1A and Cormorant Reef Red Nun "4" shall be passed on the north side
- The passage between Great Captain & Little Captain Islands shall not be used