

## 2021 H Class Championship

Friday, July 30 – Sunday, August 1  
Beverly Yacht Club, Marion, Massachusetts

### SAILING INSTRUCTIONS (SIs)

#### 1 RULES

- 1.1 The event is governed by the rules as defined in The Racing Rules of Sailing.
- 1.2 The rules of the H Class Association will apply.
- 1.3 In accordance with RRS 40.2, Rule 40.1 applies.
- 1.4 RRS 61.1(2) will be deleted. Protest flags are required.

#### 2 CHANGES TO SAILING INSTRUCTIONS

- 2.1 Any change to the sailing instructions will be posted before 0900 on the day it will take effect, except that any change to the schedule of races will be posted by 2000 on the day before it will take effect.

#### 3 COMMUNICATIONS WITH COMPETITORS

- 3.1 NoR 3.1 is replaced with: Notices to competitors will be posted on the official notice board located on the porch at the Beverly Yacht Club
- 3.2 On the water, the Race Committee intends to monitor and communicate with competitors via VHF radio on Channel 72.
- 3.3 From the first warning signal until the end of the last race of the day, except in an emergency, a boat shall not make voice or data transmissions and shall not receive voice or data communication that is not available to all boats.

#### 4 CODE OF CONDUCT

- 4.1 Competitors and support persons shall comply with reasonable requests from race officials.

#### 5 SIGNALS MADE ASHORE

- 5.1 Signals made ashore will be flown from the BYC flagpole east of the clubhouse.
- 5.2 When flag AP is displayed ashore, "One (1) minute" is replaced by "not less than 60 minutes" in Race Signal AP.

#### 6 SCHEDULE OF RACES

Day, Date	Time	Activity
Friday, July 30	1030	First warning signal for Junior Regatta
	1630	No warning signal after this time
Saturday, July 31	1030	First warning signal for Senior Regatta
Sunday, August 1	1030	First warning signal for Senior Regatta
	1230	No warning signal after this time

#### 7 CLASS FLAGS

- 7.1 The Class Flag is a red flag with a white H12 image.

#### 8 RACING AREA

- 8.1 The diagram in SI Addendum A shows the location of the racing area.

#### 9 COURSES

- 9.1 The diagrams in SI Addendum B shows the courses.
- 9.2 In the event a single gate mark is missing, the remaining mark must be left to port.

**9.3** No later than the warning signal, the race committee signal vessel will display the approximate compass bearing and distance of the first leg.

## **10 MARKS**

**10.1** Turning and starting marks are yellow tetrahedrons. If used, the offset mark will be a red ball. For a changed mark, the offset mark will not be used.

**10.2** Finishing mark will be a yellow cylinder left to port.

**10.3** New marks, as provided in SI 12, are orange tetrahedrons.

## **11 THE START**

**11.1** The starting line is between a staff displaying an orange flag on the signal vessel at the starboard end of the course side of the port-end starting mark.

**11.2** If any part of a boat's hull is on the course side of the starting line at her starting signal and she is identified, the Race Committee will attempt to hail her sail number. Failure to hail her number, failure of her to hear such a hail, or the order in which boats are hailed will not be grounds for a request for redress. This changes RRS 62.1(a).

**11.3** A boat that does not start within five minutes after her starting signal will be scored Did Not Start without a hearing. This changes RRS A5.1 and A5.2.

## **12 CHANGE OF THE NEXT LEG OF THE COURSE**

**12.1** To change the next leg of the course, the race committee will lay a new mark (or move the finishing line) and remove the original mark as soon as practicable. When in a subsequent change a new mark is replaced, it will be replaced by an original mark.

## **13 THE FINISH**

**13.1** The finishing line is between a staff displaying a blue flag on the finishing vessel and the course side of the finishing mark.

**13.2** If the Race Committee is absent when a boat finishes, she should report her finishing time and her position in relation to nearby boats to the Race Committee at the first reasonable opportunity.

## **14 PENALTY SYSTEM**

**14.1** Rules 44.1 and 44.2 apply.

## **15 TIME LIMITS**

**15.1** The Time Limit for the Junior Regatta for each race will be 60 minutes for the first boat to finish.

**15.2** The Time Limit for the Senior Regatta for each race will be 120 minutes for the first boat to finish.

**15.3** The Finishing Window is 30 minutes for boats to finish after the first boat sails the course and finishes. Boats failing to finish within the Finishing Window, and not subsequently retiring, penalized, or given redress, will be scored Time Limit Expired (TLE) without a hearing. A boat scored TLE shall be scored points for the finishing place two more than the points scored by the last boat that finished within the Finishing Window. This changes RRS 35, A5.1, A5.2 and A10.

## **16 HEARING REQUESTS**

**16.1** The protest time limit is 60 minutes after the last boat finishes the last race of the day or the Race Committee signals no more racing for the day, whichever is later. The protest time limit will be posted on the official notice board.

**16.2** Hearing request forms are available at the Protest Desk located inside the BYC clubhouse.

**16.3** Notices will be posted no later than 30 minutes after the protest time limit to inform competitors of hearings in which they are parties or named as witnesses. The location of protest hearings will be posted with the notice of hearings.

**16.4** Competitors wishing to protest shall inform the Race Committee of their intention.

**17 SCORING**

**17.1** The scoring system is RRS A4 Low Point System.

**17.2** Multiple races are scheduled, of which two shall be completed to constitute a series.

**17.3** For the Junior and Senior Regattas, if fewer than five races are completed, each boat's series scores shall be the total of her race scores. If five races are completed, each boat's series score shall be the total of her race scores excluding her worst excludable score.

**17.4** Rule A5.3 applies.

**18 SAFETY REGULATIONS**

**18.1** Prior to the warning signal for the first race on each day, a boat shall check in with the Race Committee by sailing by the stern of the Race Committee Signal Boat on starboard tack and hailing its sail number until acknowledged by the Race Committee.

**18.2** A boat that retires from a race shall notify the race committee at the first reasonable opportunity.

**19 REPLACEMENT OF CREW OR EQUIPMENT**

**19.1** Crew changes submitted after July 23, including requests to sail with other than the same crew both days, require advance written permission from the Race Committee, which will be given only in case of an emergency.

**19.2** Substitution of damaged or lost equipment is not allowed unless authorized in writing by the Race Committee. Requests for substitution shall be made to the committee at the first reasonable opportunity, which may be after the race.

**20 EQUIPMENT AND MEASUREMENT CHECKS**

**20.1** A boat or equipment may be inspected at any time for compliance with the class rules, notice of race and sailing instructions.

**21 TRASH DISPOSAL**

**21.1** Trash may be placed aboard official or support vessels.

**22 BERTHING**

**22.1** Boats shall be kept in their assigned places while in the harbor.

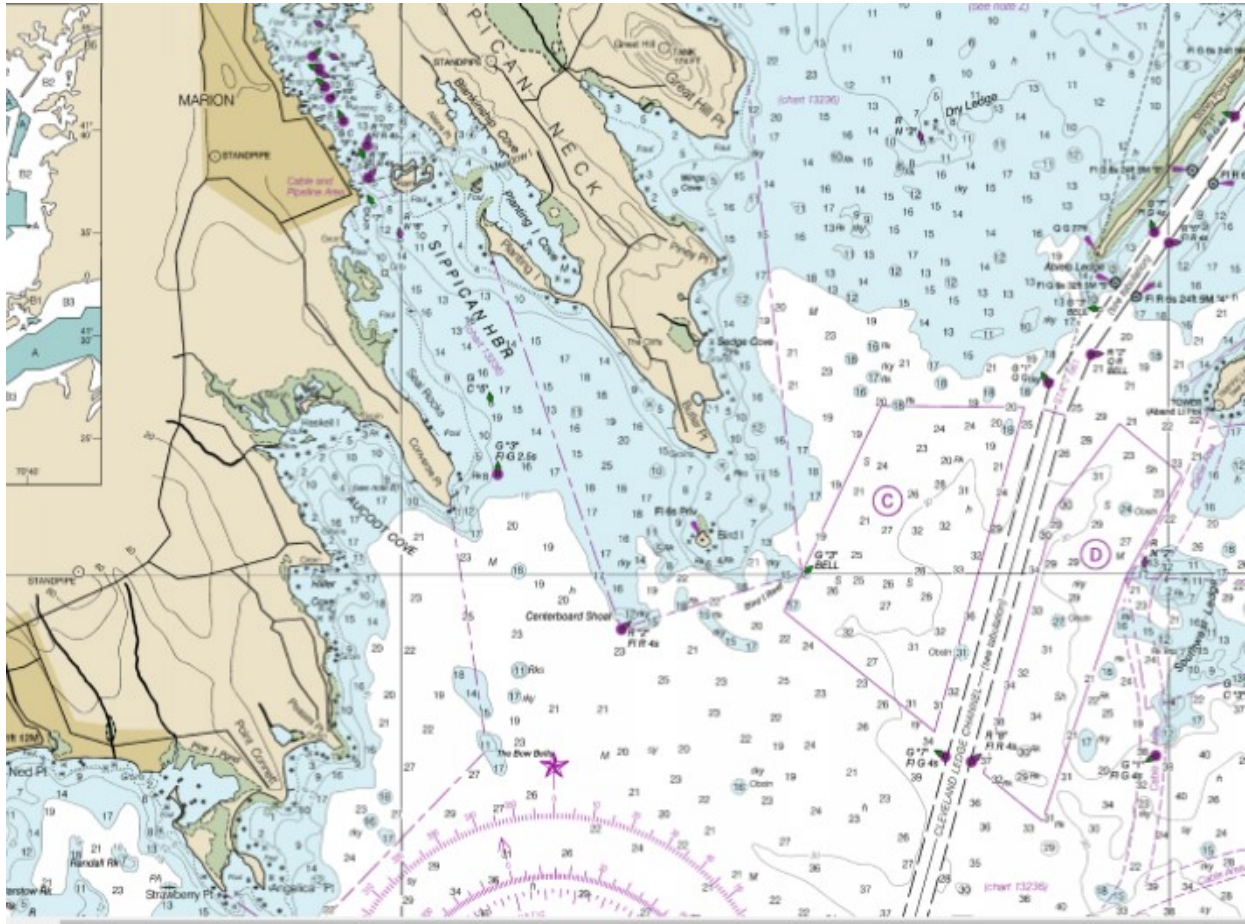
**23 HAUL-OUT RESTRICTIONS**

**23.1** Boats shall not be hauled out during the event except with and according to the terms of prior written permission of the race committee.

**24 RISK STATEMENT**

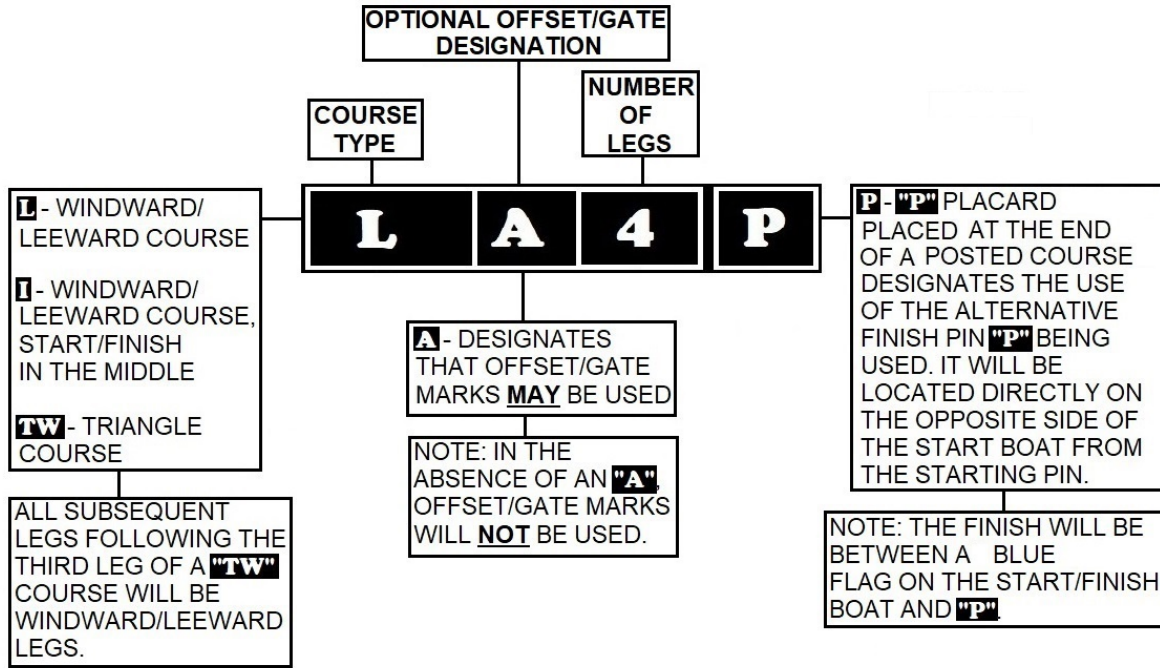
**24.1** RRS 3 states: 'The responsibility for a boat's decision to participate in a race or to continue to race is hers alone.' By participating in this event each competitor agrees and acknowledges that sailing is a potentially dangerous activity with inherent risks. These risks include strong winds and rough seas, sudden changes in weather, failure of equipment, boat handling errors, poor seamanship by other boats, loss of balance on an unstable platform and fatigue resulting in increased risk of injury. **Inherent in the sport of sailing is the risk of permanent, catastrophic injury or death by drowning, trauma, hypothermia, or other causes.**

Addendum A: Racing Area



## DROP MARK COURSES

### DESCRIPTION OF DROP MARK COURSES



### DROP MARK COURSE DIAGRAMS

