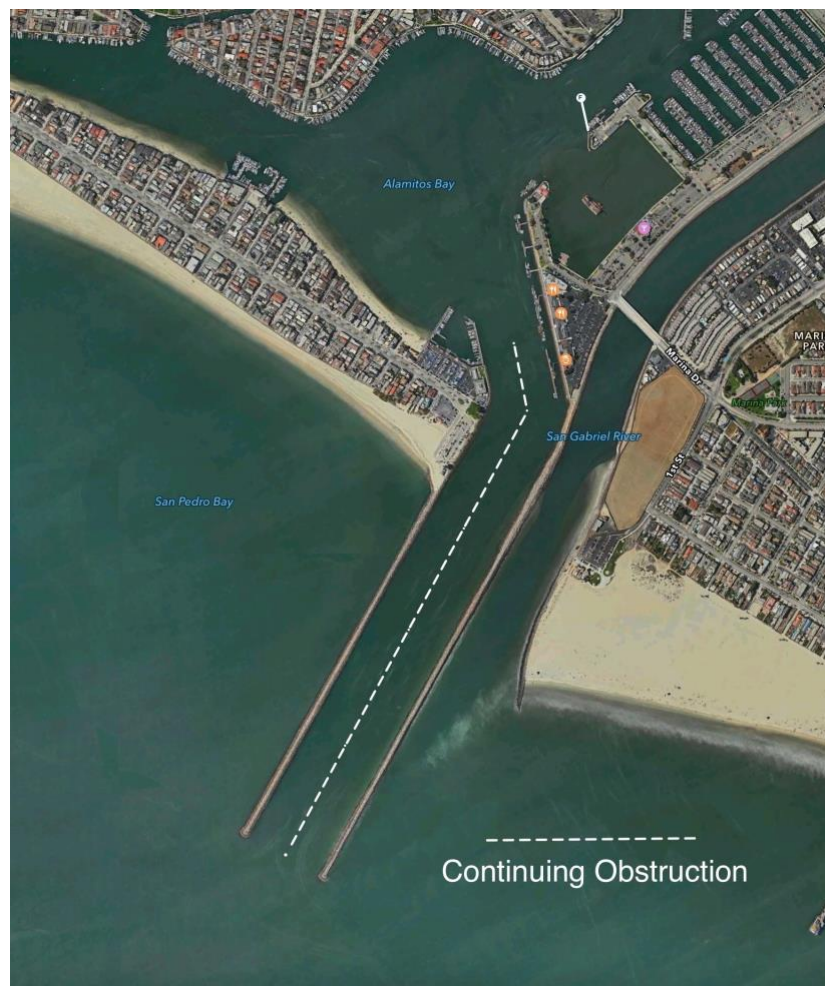


Changes to Sailing Instructions

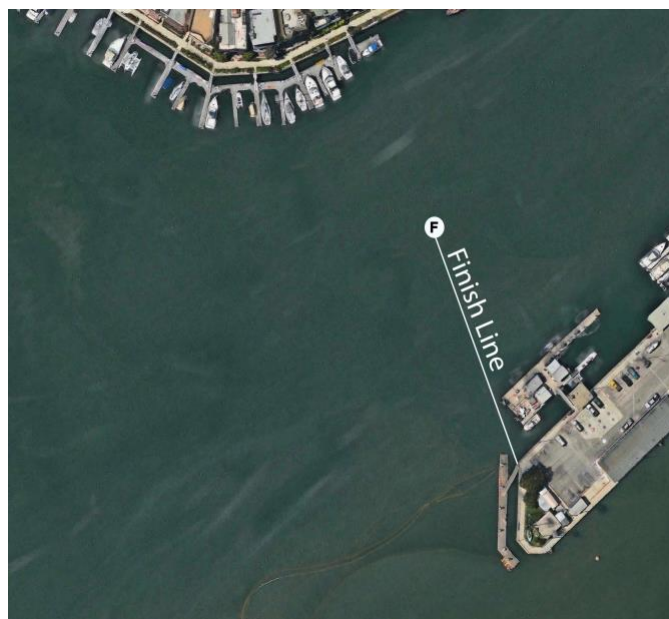
Pop Tops - 2021

April 29, 2021

1. **Mark "A"** - "A" Buoy at the entrance to Alamitos Bay Marina (ABM) is considered a "Mark" (in addition to being the start of a continuing obstruction) for all Pop Tops Race Courses. A 3-boat zone shall be in effect for determining "Mark" room at "A" Buoy. This changes Rules 18.1(d) and 19 for Mark "A" only. "A" Mark shall be passed to port.
2. **Continuing Obstruction** - A boat that crosses the "Continuing Obstruction" down the channel entering Alamitos Bay must take a one-turn penalty as soon as it has cleared the end of the Continuing Obstruction or be subject to protest and/or disqualification.



- 3. Finish line** - The finish line will be between the Navy Yacht Club facility and the center of channel buoy or an Orange flag in front of the gas dock. This changes Sailing Instructions-Pop Tops 2019 Course Chart #11.



- 4. Time Limit** - The race will be called at 2030 for any class if no boat in that class has finished and boats in that class will be score DNF. A boat finishing prior to 2030 hours shall establish the race for its class and boats in that class will be allowed to finish, and will be scored if they finish prior to 2045. No boats will be finished after 2045. This changes *RRS 35*. This changes the Notice of Race and SI #13 regarding Time.
- 5. Changes to the SI's on the Water** - In the event that oral changes to the sailing instruction are needed on the water, the RC will broadcast any changes over VHF channel 71.
- 6. Alternative Penalty** - Racing Rule 44 is changed so that the 720 degree turn is replaced by a 360 degree turn. Appendix V2 will apply, however, the 30% penalty will be calculated on the number of boats racing in that race. This changes rule 44.3(c). This also changes Sailing Instruction – Pop Tops 2019 - #12.

Bob Hubbard
Race Chairman
Seal Beach Yacht Club