



PHRF SAILING INSTRUCTIONS

2021 BAY SHORE YACHT CLUB'S GSBYRA INVITATION REGATTA

SUNDAY, JULY 18

1. RULES

1.1. The races will be governed by the most recent "Racing Rules of Sailing" except where specifically changed in these sailing instructions.

2. ELIGIBILITY AND ENTRY:

2.1. The Regatta is open to all members in good standing of a GSBYRA Full Member Clubs and clubs affiliated with US SAILING, and invited guests.

2.2. Eligible boats may register at <http://www.regattanetwork.com/event/22273>

2.3. **Registration closes for all boats on Friday, July 16 at 2400.**

2.4. ***Unregistered boats will not be scored.***

2.5. In order for a yacht to participate it must be self-righting.

3. CLASSES PHRF NoSpin – Pursuit Format Only

4. NOTICES TO COMPETITORS:

4.1. Notices to competitors will be broadcast on VHF Channel #72 and (when time allows) will be posted on the Regatta Network website (see Paragraph 2.2).

4.2. Racers shall monitor VHF channel #72 at all times.

5. CHANGES IN SAILING INSTRUCTIONS: Will be posted on the Regatta Network (see Paragraph 2.2) before 1000 on the day they will take effect, except that any change in the schedule of races will be posted by 1800 on the day before they will take effect.

6. SIGNALS MADE ASHORE All signals shall be made on VHF channel #72

7. SCHEDULE OF RACE Sunday, July 18 PHRF Pursuit

Warning Signal (4-5 short blasts over VHF Channel #72): 1259 GPS time

Base Start Signal (1 long blast over VHF Channel #72): 1300 GPS time

8. RACING AREA is Great South Bay to the south of Bay Shore Marina

9. COURSES Given in **Appendix A**. The Course to be sailed will be announced on VHF channel #72 at approximately 12:45

10. STARTING PROCUDURES

- 10.1 When you arrive at the starting area, hail the committee boat on VHF channel 72 and broadcast, your Boat name, and sail number
- 10.2 While you are in the starting area, listen to VHF channel #72 for the course number that will be run. Continue to listen to your radio for additional information from the committee boat.
- 10.3 After you know what course number is being run, go to the Starting Offset spreadsheet Appendix B and follow the selected course number column down until it intersects the row with your specific boat information. There are many courses so it is important that you select the course column that corresponds to the course being run (announced on VHF Channel #72 about 15 minutes before the start of the race). The information in the box where the row and column meet is your "Starting Time Offset". The "Starting Time Offset" is the number of minutes and seconds that you should start racing after the "Base Starting Time" horn has sounded.
- 10.4 EXAMPLE: Assuming the "Base Starting Time" is 1300, If your "Starting Time Offset" is +01:32 (1 minute and 32 seconds) you should add this to the "Base Starting Time" and that will be your "Actual Starting Time".

Example:	"Base Starting Time (PHRF rating of 300)"	13:00
	"Starting Time Offset"	+01:32
	"Actual Starting Time"	13:01:32

11. START LINE:

- 11.1 Yachts will start in the vicinity of the flashing green government Buoy "1" in Great Cove. Buoy "1" is located .8nm south of the Bay Shore Town Marina. There will be no "X" mark for this race so boats should start within 75 yds of Buoy # 1 and pass it on the same side as the first mark of the course.
- 11.2 Please keep the starting area clear for those boats that are about to start in order to avoid congestion at the starting line. It is very important that no boat be on the course side of the starting line after the "Base Starting Time."

12. STARTING SEQUENCE

- 12.1 There will be multiple (4-5) rapid horn blasts one minute prior to the "Base Starting Time" horn. One minute after the multiple rapid horns, a single long horn will be sounded precisely at 1300. This long single horn marks the "Base Starting Time". At the "Base Starting Time" horn, yachts with a handicap of 300 may start. Any yacht with a lower handicap will start after a specific amount of time has elapsed after the "Base Starting Time" horn. Every boat will be assigned a separate "Starting Time Offset" based on your boat's handicap rating and the course chosen to be sailed.
- 12.2 This is a pursuit race, and each yacht will have her own "Actual Starting Time" based on her handicap.

13. FINISH LINE:

- 13.1 There will not be a specific Finish Line that boats must pass through. Yachts must finish by passing within 75 yards of Buoy #1 on the prescribed side in the course description.

13.2 Yachts that finish the race should call the committee boat on VHF channel "72" indicating their boat name and sail number. Yachts that finish the race should also note their GPS finish time and the boat that finished immediately ahead and behind them. This information will be used should there be a discrepancy with the order of finish as recorded by the committee boat or in the event the committee boat had to leave station.

14. TIME LIMIT: The Time Limit is 3 hours. Boats failing to finish within 30 minutes after the first boat in her starting class completes the course will be scored DNF (did not finish).

15. SCORING: Will be done by the pursuit method based on Time-on-Distance. A boat's time allowance is taken at her start so that the boats' finishing positions will be their actual finish place.

16. PROTESTS AND REQUESTS FOR REDRESS:

16.1. Rule 61.1a is amended in that a boat intending to protest shall notify the RC Boat immediately after finishing and identifying the boat(s) being protested.

16.2. RC will convene a protest hearing at BSYC as soon as possible.

17. SAFETY REGULATIONS:

17.1 All competitors ages 17 or under shall wear a properly fastened US Coast Guard approved Personal Floatation Device (PFD), inherently buoyant, (i.e. not inflatable) while afloat. Float coats and inflatable PFD's are NOT permitted.

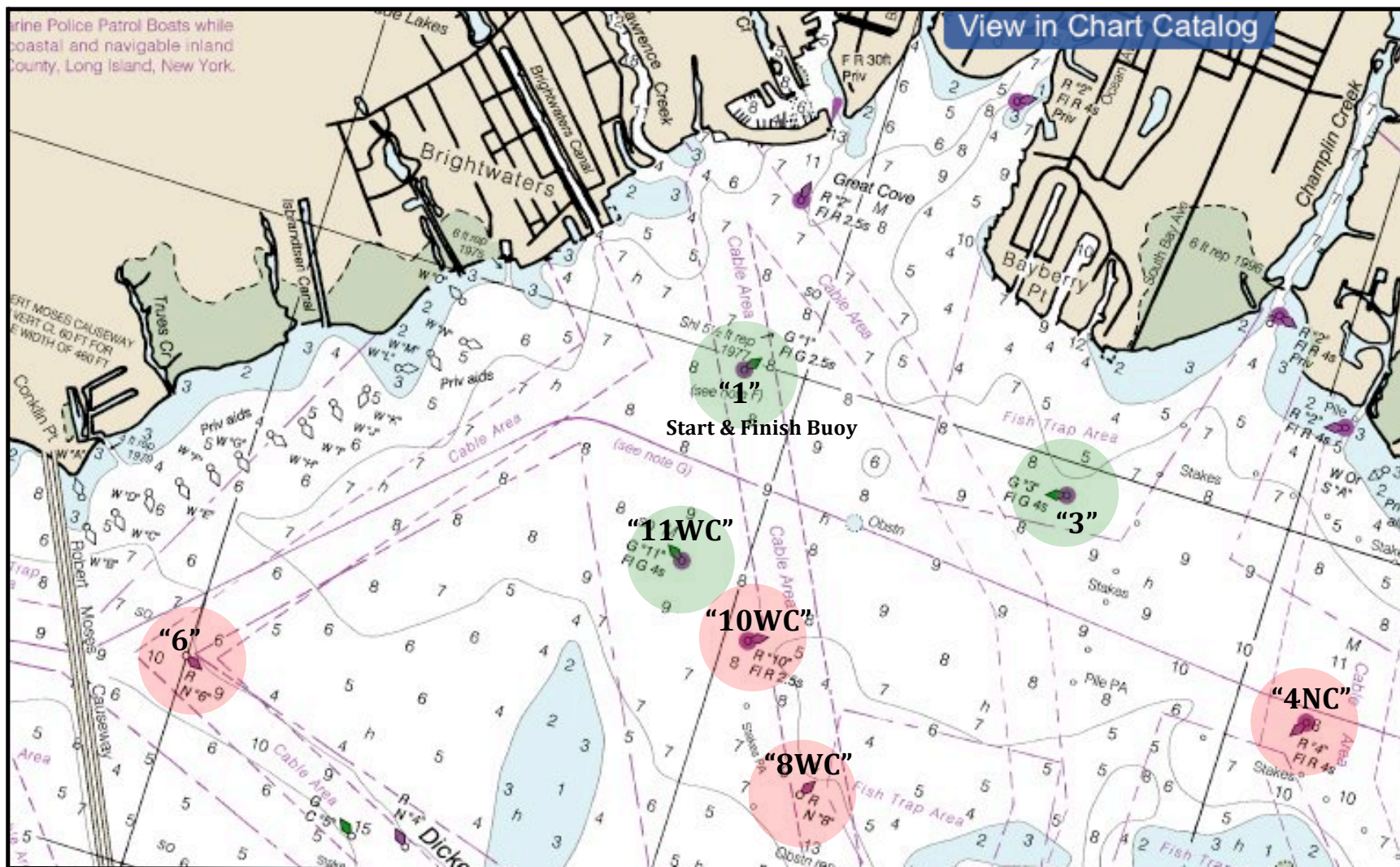
17.2 It is highly recommended that all adult competitors (ages 18 and over) that are not aboard yachts having lifelines shall wear a properly fastened US Coast Guard approved Personal Floatation Device (PFD) while racing. Float coats and inflatable PFD's are permitted.

17.3 All competitors on any PHRF boat that does not have lifelines shall wear PDF's as specified in Paragraphs 17.1 and 17.2 during the entire race.

18. PRIZES: Will be awarded at the BSYC Club house approximately 1 hour after the last boat finishes.

19. DISCLAIMER OF LIABILITY: Competitors participate in the regatta entirely at their own risk. See Rule 4, Decision to Race. Bay Shore Yacht Club, its officers, employees, governors, agents, members, committees, and volunteers will not accept any liability for material damage or personal injury or death sustained in conjunction with, prior to, during or after the Regatta.

20. CONTACT: Bill Wheeler (516) 810-7605 billray407@aol.com



**2021 Bay Shore Invitational Races
Marks Of The Courses**

- "1" Flashing Green No. 1 in Great Cove
- "3" Flashing Green No. 3 off Bayberry Point
- "4NC" Flashing Red No. 4 in North Channel
- "6" Red Nun No. 6 just east of Robert Moses Causeway
- "8WC" Red Nun No. 8 in West Channel
- "10WC" Red Nun No. 10 in West Channel
- "11WC" Flashing Green No. 11 in West Channel

APPENDIX A:

2021 Bay Shore GSBYRA Invitational Race Courses

Course 1 (2.91 nm)

(NE, NW, S wind)
Start at "1" port
"10WC" port
"3" port
Finish at "1" port

Course 2 (2.91 nm)

(N, E, SE, SW wind)
Start at "1" starboard
"3" starboard
"10WC" starboard
Finish at "1" starboard

Course 3 (3.64 nm)

(N, NW, NE, SW wind)
Start at "1" port
"11WC" port
"3" starboard
"10WC" starboard
Finish at "1" starboard

Course 4 (4.26 nm)

(N, S wind)
Start at "1" port
"11WC" port
"8WC" port
"10WC" starboard
"1" starboard
"10WC" starboard
Finish at "1" starboard

Course 5 (4.48 nm)

(NW, E, S wind)
Start at "1" port
"10WC" port
"4NC" port
Finish at "1" port

Course 6 (4.48 nm)

(E, SE, W wind)
Start at "1" starboard
"4NC" starboard
"10WC" starboard
Finish at "1" starboard

Course 7 (4.51 nm)

(NW, SE wind)
Start at "1" port
"11WC" port
"4NC" port
Finish at "1" port

Course 8 (4.76 nm)

(SW wind)
Start at "1" port
"6" port
"11WC" starboard
"10WC" port
Finish at "1" port

Course 9 (4.82 nm)

(NE, NW, SE, S wind)
Start at "1" port
"10WC" port
"3" starboard
"4NC" starboard
Finish at "1" starboard

Course 10 (4.82 nm)

(N, NW, SE, SW wind)
Start at "1" port
"4NC" port
"3" port
"10WC" starboard
Finish at "1" starboard

Course 11 (4.96 nm)

(SW, NE wind)
Start at "1" starboard
"6" starboard
"1" starboard
"11WC" port
Finish at "1" port

Course 12 (5.59 nm)

(E, W wind)
Start at "1" starboard
"3" starboard
"11WC" port
"6" starboard
Finish at "1" starboard

Course 13 (5.8 nm)

(SW wind)
Start at "1" port
"6" port
"11 WC" starboard
"10 WC" port
"3" port
Finish at "1" port

Course 14 (5.82 nm)

(NE, NW, S wind)
Start at "1" port
"10WC" port
"3" port
"1" port
"10WC" port
"3" port
Finish at "1" port

Course 15 (5.82 nm)

(N, E, SE, SW wind)
Start at "1" starboard
"3" starboard
"10WC" starboard
"1" starboard
"3" starboard
"10WC" starboard
Finish at "1" starboard

**Appendix B 2021 BSYC Invitational
PHRF Starting Time Offsets**

Base Start:	13:00:00	Pursuit Calculator			0	Course	Course	Course	Course	Course	Course	Course	Course	Course	Course	Course
Base HCP:	315				Distance	1 or 2	3	4	5 or 6	7	8	9 or 10	11	12	13	14 or 15
Yachts 57	Sail#	Skipper	Type	PHRF	Start	Start	Start	Start	Start	Start	Start	Start	Start	Start	Start	Start
Dust in the Wind	10	F Liesegang	Pearson 34-2	180	13:06:33	13:08:11	13:09:35	13:10:05	13:10:09	13:10:43	13:10:51	13:11:10	13:12:35	13:13:03	13:13:06	
Integrity	11	B. Figueroa	Mariner 28	219	13:04:39	13:05:49	13:06:49	13:07:10	13:07:13	13:07:37	13:07:43	13:07:56	13:08:57	13:09:17	13:09:19	
Filibuster	12	D. Hyer	Morgan 30	203	13:05:26	13:06:48	13:07:57	13:08:22	13:08:25	13:08:53	13:09:00	13:09:16	13:10:26	13:10:50	13:10:52	
Mo'Sun	17	L. Feldman	Catalina 320	177	13:06:42	13:08:22	13:09:48	13:10:18	13:10:22	13:10:57	13:11:05	13:11:24	13:12:51	13:13:20	13:13:23	
Ripple	18	M. Jeshiva	Hunter 33	177	13:06:42	13:08:22	13:09:48	13:10:18	13:10:22	13:10:57	13:11:05	13:11:24	13:12:51	13:13:20	13:13:23	
Sabbatical	32			255	13:02:55	13:03:38	13:04:16	13:04:29	13:04:31	13:04:46	13:04:49	13:04:58	13:05:35	13:05:48	13:05:49	
Windswept	62	B. McLoughlin	Ericson 32	186	13:06:15	13:07:50	13:09:10	13:09:38	13:09:42	13:10:14	13:10:22	13:10:40	13:12:01	13:12:28	13:12:31	
Kilkee	66	K. O'Brien	Tartan 31	174	13:06:50	13:08:33	13:10:01	13:10:32	13:10:36	13:11:11	13:11:20	13:11:39	13:13:08	13:13:38	13:13:41	
At Last	101	E. Anderson	Sabre 36 CB	132	13:08:53	13:11:06	13:13:00	13:13:40	13:13:45	13:14:31	13:14:42	13:15:08	13:17:03	13:17:41	13:17:45	
Bertha	126	M. Rainis	Altantic Cat 24	300	13:00:44	13:00:55	13:01:04	13:01:07	13:01:08	13:01:11	13:01:12	13:01:14	13:01:24	13:01:27	13:01:27	
Noddy	149	J. Papa	Sailmaster 22	315	13:00:00	13:00:00	13:00:00	13:00:00	13:00:00	13:00:00	13:00:00	13:00:00	13:00:00	13:00:00	13:00:00	
Papilon	166	N. Loretta	Lagunna 30	211	13:05:03	13:06:19	13:07:23	13:07:46	13:07:49	13:08:15	13:08:21	13:08:36	13:09:41	13:10:03	13:10:05	
Jolly Mon	175	D. Ahern	Morgan 22	246	13:03:21	13:04:11	13:04:54	13:05:09	13:05:11	13:05:28	13:05:33	13:05:42	13:06:26	13:06:40	13:06:42	
Galatea	177	A. Mirchel	Pearson Wanderer	229	13:04:10	13:05:13	13:06:06	13:06:25	13:06:28	13:06:49	13:06:55	13:07:07	13:08:01	13:08:19	13:08:21	
Intrepid	185	C. Goodwin	Tartan 28	196	13:05:46	13:07:13	13:08:27	13:08:53	13:08:57	13:09:26	13:09:34	13:09:50	13:11:05	13:11:30	13:11:33	
Turn the page	192	D. Becker	J-70	112	13:09:51	13:12:19	13:14:25	13:15:09	13:15:16	13:16:06	13:16:18	13:16:47	13:18:55	13:19:37	13:19:41	
Czech Mate	196	J. Dennerlein		210	13:05:06	13:06:22	13:07:27	13:07:50	13:07:54	13:08:20	13:08:26	13:08:41	13:09:47	13:10:09	13:10:11	
Soverign	199	C.DeMarco	Pearson 27-2	231	13:04:04	13:05:06	13:05:58	13:06:16	13:06:19	13:06:40	13:06:45	13:06:57	13:07:50	13:08:07	13:08:09	
Grace	200	P. Connelly	Pearson Commander	265	13:02:26	13:03:02	13:03:33	13:03:44	13:03:46	13:03:58	13:04:01	13:04:08	13:04:40	13:04:50	13:04:51	
Shadow	203	C. Margeson	Morgan 41 Classic	155	13:07:46	13:09:42	13:11:22	13:11:57	13:12:02	13:12:42	13:12:51	13:13:14	13:14:54	13:15:28	13:15:31	
Derailed	217	M. Marko	C&C 29 MKII	197	13:05:43	13:07:10	13:08:23	13:08:49	13:08:52	13:09:22	13:09:29	13:09:45	13:11:00	13:11:24	13:11:27	
Merry Ann	220	W. Cook	C&C 30-1	178	13:06:39	13:08:19	13:09:44	13:10:14	13:10:18	13:10:52	13:11:00	13:11:20	13:12:46	13:13:15	13:13:17	
Arbacia	230	J. Gathard	Sabre 30	189	13:06:07	13:07:39	13:08:57	13:09:24	13:09:28	13:10:00	13:10:07	13:10:25	13:11:44	13:12:11	13:12:13	
Aleboat	232	E. Winberry	Hunter 28	195	13:05:49	13:07:17	13:08:31	13:08:58	13:09:01	13:09:31	13:09:38	13:09:55	13:11:11	13:11:36	13:11:38	
Rhodes	258	J. Phillips	Rhodes C 22	288	13:01:19	13:01:38	13:01:55	13:02:01	13:02:02	13:02:09	13:02:10	13:02:14	13:02:31	13:02:37	13:02:37	
Princess of Artimino	264			156	13:07:43	13:09:39	13:11:17	13:11:52	13:11:57	13:12:37	13:12:46	13:13:09	13:14:49	13:15:22	13:15:25	
Squidward	269	Polansky	Santana	249	13:03:12	13:04:00	13:04:41	13:04:56	13:04:58	13:05:14	13:05:18	13:05:27	13:06:09	13:06:23	13:06:24	
Mirage II	311	G. Schneller	Sabre 34	156	13:07:43	13:09:39	13:11:17	13:11:52	13:11:57	13:12:37	13:12:46	13:13:09	13:14:49	13:15:22	13:15:25	
Jubilee	354	R. Russo	O'Day 272	246	13:03:21	13:04:11	13:04:54	13:05:09	13:05:11	13:05:28	13:05:33	13:05:42	13:06:26	13:06:40	13:06:42	
Wild Blue II	360	A. Mulle	SeaBreeze Ketch	267	13:02:20	13:02:55	13:03:24	13:03:35	13:03:36	13:03:48	13:03:51	13:03:58	13:04:28	13:04:38	13:04:39	
Wind Dancer	378	H. Pfister	O'Day 302	213	13:04:57	13:06:11	13:07:15	13:07:37	13:07:40	13:08:06	13:08:12	13:08:26	13:09:30	13:09:52	13:09:54	
Bionator	395	M. Goodman	C&C 29 MKII	179	13:06:36	13:08:15	13:09:39	13:10:09	13:10:13	13:10:47	13:10:56	13:11:15	13:12:40	13:13:09	13:13:12	
Bleu Moon	439	T. McCarthy	Tartan 37	156	13:07:43	13:09:39	13:11:17	13:11:52	13:11:57	13:12:37	13:12:46	13:13:09	13:14:49	13:15:22	13:15:25	
Moonrise	165	Rob Gutman	S2	171	13:06:59	13:08:44	13:10:13	13:10:45	13:10:49	13:11:25	13:11:34	13:11:54	13:13:25	13:13:55	13:13:58	
Snoopy	682	D. Deruvo	Catalina 28	213	13:04:57	13:06:11	13:07:15	13:07:37	13:07:40	13:08:06	13:08:12	13:08:26	13:09:30	13:09:52	13:09:54	
Karma	716			210	13:05:06	13:06:22	13:07:27	13:07:50	13:07:54	13:08:20	13:08:26	13:08:41	13:09:47	13:10:09	13:10:11	
Espirit De Mer	888	J. Sidebottom		237	13:03:47	13:04:44	13:05:32	13:05:49	13:05:52	13:06:11	13:06:16	13:06:27	13:07:16	13:07:32	13:07:34	
Vantage	913	D. Hyer Jr	J-22	177	13:06:42	13:08:22	13:09:48	13:10:18	13:10:22	13:10:57	13:11:05	13:11:24	13:12:51	13:13:20	13:13:23	
Kickin' Back	1227	M. O'Connell	Tartan 34-2	152	13:07:54	13:09:53	13:11:34	13:12:10	13:12:15	13:12:56	13:13:06	13:13:28	13:15:11	13:15:45	13:15:49	
Pelagic	1855	V. Tienber	Allied SeaBreeze	214	13:04:54	13:06:08	13:07:10	13:07:32	13:07:36	13:08:01	13:08:07	13:08:21	13:09:25	13:09:46	13:09:48	
Pandemonium	2224	G. Sebouhian	C&C 29 MKII	191	13:06:01	13:07:31	13:08:48	13:09:16	13:09:19	13:09:50	13:09:58	13:10:15	13:11:33	13:11:59	13:12:02	

Thriller	2261			216	13:04:48	13:06:00	13:07:02	13:07:24	13:07:26	13:07:51	13:07:57	13:08:11	13:09:13	13:09:34	13:09:36
Whisper	2420			212	13:05:00	13:06:15	13:07:19	13:07:41	13:07:45	13:08:10	13:08:16	13:08:31	13:09:36	13:09:57	13:09:59
Chanson	4271	J. Dunnells	Morgan 30	200	13:05:35	13:06:59	13:08:10	13:08:35	13:08:39	13:09:07	13:09:14	13:09:30	13:10:43	13:11:07	13:11:09
Fair Winds	5488	G. Bernichon	Catalina 30	204	13:05:23	13:06:44	13:07:53	13:08:17	13:08:21	13:08:48	13:08:55	13:09:11	13:10:20	13:10:44	13:10:46
Sweet Harmony II	5702	Justin Martinich	Catalina	240	13:03:38	13:04:33	13:05:20	13:05:36	13:05:38	13:05:57	13:06:02	13:06:12	13:06:59	13:07:15	13:07:17
Talon	5861	J. Grover	C&C 25	210	13:05:06	13:06:22	13:07:27	13:07:50	13:07:54	13:08:20	13:08:26	13:08:41	13:09:47	13:10:09	13:10:11
Bonked Out	6119			222	13:04:31	13:05:39	13:06:36	13:06:57	13:06:59	13:07:23	13:07:28	13:07:41	13:08:40	13:08:59	13:09:01
Dark Star	7700	R. LaTorre	S2-7.9	165	13:07:17	13:09:06	13:10:39	13:11:12	13:11:17	13:11:54	13:12:03	13:12:24	13:13:59	13:14:30	13:14:33
Lady In Red	11047	T. Drossos	C&C 110SD	114	13:09:45	13:12:12	13:14:16	13:15:00	13:15:07	13:15:57	13:16:09	13:16:37	13:18:44	13:19:26	13:19:30
Maggie Lee	11185	L. Christiansen	C&C 35-2	129	13:09:01	13:11:17	13:13:12	13:13:53	13:13:59	13:14:45	13:14:57	13:15:23	13:17:20	13:17:59	13:18:03
Leviathan	12918	Simpson		204	13:05:23	13:06:44	13:07:53	13:08:17	13:08:21	13:08:48	13:08:55	13:09:11	13:10:20	13:10:44	13:10:46
Whitecap	13642	J. Holst	Pearson 26	213	13:04:57	13:06:11	13:07:15	13:07:37	13:07:40	13:08:06	13:08:12	13:08:26	13:09:30	13:09:52	13:09:54
Sequester	22897			225	13:04:22	13:05:28	13:06:23	13:06:43	13:06:46	13:07:08	13:07:14	13:07:26	13:08:23	13:08:42	13:08:44
Tortoise	40014	W. Wheeler	Friendship 40	117	13:09:36	13:12:01	13:14:03	13:14:47	13:14:53	13:15:42	13:15:54	13:16:22	13:18:27	13:19:08	13:19:12
Kariana	42380	D. Krug	Sabre 38	132	13:08:53	13:11:06	13:13:00	13:13:40	13:13:45	13:14:31	13:14:42	13:15:08	13:17:03	13:17:41	13:17:45
Mystic	42740	J. Morgan	Sabre 34	141	13:08:26	13:10:33	13:12:21	13:13:00	13:13:05	13:13:48	13:13:59	13:14:23	13:16:13	13:16:49	13:16:53
Rising Tide	50110	J. Pizer	Sabre 38	141	13:08:26	13:10:33	13:12:21	13:13:00	13:13:05	13:13:48	13:13:59	13:14:23	13:16:13	13:16:49	13:16:53