



# Navy Yacht Club San Diego

## Wednesday Night Races

### 2021 Summer Series

## **SAILING INSTRUCTIONS**



Organizing Authority:  
Navy Yacht Club San Diego

#### 1. **RULES**

- 1.1 The regatta will be governed by the Racing Rules of Sailing (RRS), the rules of PHRF Southern California and San Diego Class Rules and By-Laws, the rules of the competing classes (except as any of these are altered by these sailing instructions), and by the USCG Navigation Rules Inland.
- 1.2 No vessel has the right of way over a large ship in the channel.
- 1.3 **NAVAL PROTECTION ZONE:** The Naval Protection Zone is a 500-yard regulated area of water surrounding all US Naval Vessels. All vessels within 500 yards of a US Naval Vessel shall operate at the minimum speed necessary to maintain safe course and speed and shall proceed as directed by any official patrol. **NO VESSEL IS ALLOWED WITHIN 100 YARDS OF A US NAVAL VESSEL.** These zones are permanently in effect.
- 1.4 During the COVID-19 pandemic, boats shall follow the [SD County Safe Reopening Protocol for Recreational Boating](#).
- 1.5 RRS 60.2, 63.1, and A5 are modified to add that the Race Committee (RC) may disqualify without a hearing a yacht infringing SI 1.2, 1.3, and 1.6.
- 1.6 In accordance with an agreement with the MWR Marina in order to keep NYCSD Summer Series on track, the following needs to be adhered to: Any boat racing with NYCSD and originating/berthed at Fiddler's Cove Marina **MUST** provide the 'number' of guests transiting the Marina, to the Commodore by email to commodore@nycsd.club by noon on the date of the race. Guests are defined as any person not renting a slip at the Marina. The Commodore will provide a consolidated report to the Marina Manager.

#### 2. **NOTICE TO COMPETITORS**

- 2.1 Notices to competitors will be posted on the [NYCSD Regatta Network event page](#). Due to COVID-19 restrictions, Notices to competitors will not be posted on the front window of the NYCSD clubhouse.

#### 3. **CHANGES TO SAILING INSTRUCTIONS**

- 3.1 Changes to sailing instructions made ashore will be posted no later than 1800 on the day prior to the event on the [NYCSD Regatta Network event page](#).

#### 4. **SIGNALS MADE AFLOAT**

- 4.1 Changes to Sailing Instructions made afloat will be communicated by the RC boat displaying code flag L over code flag A with one sound signal. Come within hail of the RC boat to receive the change.
- 4.2 If no RC boat is used for the event, changes will be communicated via text or by hail from the Designated Competitor Boat (DCB). Changes may also be broadcast via VHF channel 69. This changes RRS Race Signals.

#### 5. **CHECK-IN**

- 5.1 Boats shall check-in with the RC by sailing past the stern of the RC boat on starboard tack after the hoist of the L code flag and before the first warning signal. Boats shall report their sail numbers and class.
- 5.2 If no RC boat is used for the event, boats shall check-in by text prior to 1745.

#### 6. **SCHEDULE OF RACES**

- 6.1 Dates of races are listed in the NOR.
- 6.2 One race per day will be sailed for all classes.

6.3 The scheduled time of the warning signal for the first class will be 1755. If no RC boat is used for the event, there will be no sounds and the warning will be GPS time. This changes RRS 26.

## 7. **CLASSES, CLASS FLAGS, AND STARTING ORDER**

7.1 The class starting order will be as follows: 1, 2, Capri 16.5.

7.2 As stated in NOR 6.4 "Due to MWR COVID-19 restrictions and RC operating limitations, classes may be consolidated into a single class for the Spring series."

7.3 The RC may combine starts. The RC will announce the combined start by text. This changes RRS 26.

## 8. **RACING AREA**

8.1 Racing shall take place in South San Diego Bay in the area between Fiddlers Cove Marina to the South, Navy Base Coronado to the North, and 32nd St. Naval Station to the East.

8.2 Start area will be in the vicinity of San Diego channel buoy 32A.

8.3 Finish area will be in the vicinity of the entrance to Fiddler's Cove Marina.

## 9. **THE COURSE**

9.1 The RC will announce the designated course by text. The Designated Competitor Boat (DCB) may announce by VHF channel 69 or by hail to competitors. This modifies RRS 27.1.

9.2 Courses will be selected from the attached Spring series course chart. All marks shall be rounded to port.

## 10. **MARKS**

10.1 CCYC A will be a 24 inch yellow fender marked with "A" in black letters in the vicinity of Naval Amphibious Base at approximately N32° 40.003' W117° 08.909'.

10.2 CCYC B will be a 30 inch white ball marked with "B" in black letters in the vicinity of the entrance to Fiddler's Cove Marina at approximately N32° 39.177' W117° 08.575'.

10.3 CCYC C will be a 22 inch white ball marked with "C" in black letters in the vicinity of Crown Cove at approximately N32° 38.542' W117° 08.195'.

10.4 Mark "O" will be an orange ball in the vicinity North of the Fiddler's Cove Marina anchorage at approximately N32° 39.508' W117° 08.671'.

## 11. **STARTS**

11.1 The start line will be an imaginary line between **SD Buoy 32A** and **SD Buoy 34**. Class 1 will start at 1800 GPS time, Class 2 will start at 1805 GPS time, and the Capri 16.5 class will start at 1810 GPS time. Starts will be on your honor. This changes RRS 26 and RRS Race Signals.

11.2 Yachts shall stay clear of the starting area until 5 minutes prior to their start.

11.3 Boats not starting within 10 minutes of their class start will be scored DNS. This changes RRS 63.1, A4, and A5.

## 12. **RECALLS**

12.1 There will be no recalls. If a competitor is OCS they should feel extremely guilty and restart. This changes RRS 29.1, 29.2 and 62.1(a).

## 13. **FINISH**

13.1 Finish line begins at CCYC B and extends 3 boat lengths in the direction of the South most floating entrance platform (pile) anchoring the floating barrier to Fiddler's Cove Marina. CCYC B shall be taken to port. Competitors shall record their own GPS finish time. This changes RRS Race Signals.

13.2 Finish times shall be sent to the RC via text within 30 minutes of the finish. Ensure your boat name is in the text, and note other boats finishing at approximately the same time.

## 14. **TIME LIMIT**

14.1 Time limit for the first boat in a class to finish a race shall be one hour and 15 minutes. Boats failing to finish within 30 minutes after the first boat in their class sails the course and finishes will be scored DNF without a hearing. This changes RRS 35, A4, and A5.

**15. PENALTIES**

- 15.1 A boat shall take a One-Turn Penalty when she may have broken a rule(s) of Part 2 or RRS 31 while racing. When she may have broken a rule(s) of Part 2 while in the zone around a mark other than a starting mark, her penalty shall be a One-Turn Penalty. This changes RRS 44.1.
- 15.2 Scoring Penalty 44.3 shall apply.

**16. PROTESTS**

- 16.1 RRS 61 is modified to add the additional requirement: A boat intending to protest shall report her intentions and the boat(s) being protested to the Principal Race Officer (PRO) via text within 30 minutes of finishing or retiring and obtain PRO acknowledgment. This changes NOR 8.1.
- 16.2 Protests shall be filed via email to the PRO within 90 minutes of the last boat finishing.
- 16.3 The parties involved will be listed, in the order of filing, on the [NYCSD Regatta Network event "Notice Board"](#) and protests will be heard as soon as practicable, which will be at a later date and likely via ZOOM. This posting constitutes the notice required by RRS 63.2, Time and Place of the Hearing.
- 16.4 Arbitration, in accordance with RRS Appendix T, will be available after racing at the NYCSD Clubhouse or via ZOOM, for breaches of the rules of Part 2 where there is no damage or injury. Protests and Requests for Redress not resolved through arbitration or scoring inquiries will be referred to the protest committee for a hearing.
- 16.5 Generally, protests are HIGHLY discouraged. Beer cans are intended to be a fun, spirited and a safe learning environment with "Corinthian Sportsmanship" a priority.

Commodore, NYCSD  
 Bob Howdyshell  
 (909) 560-6685  
[commodore@nycsd.club](mailto:commodore@nycsd.club)

Principal Race Officer, Spring Series  
 Lisa Brewer  
 (916) 802-5400  
[lisamariabrewer@hotmail.com](mailto:lisamariabrewer@hotmail.com)

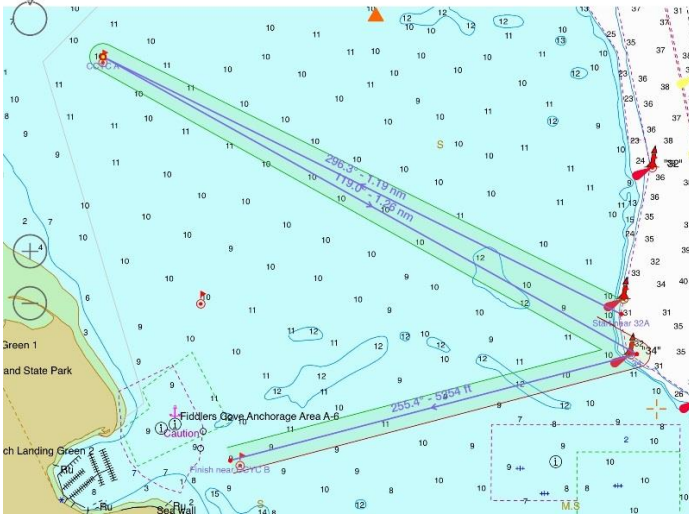
## Summer Series Course Chart

(All marks rounded to port)

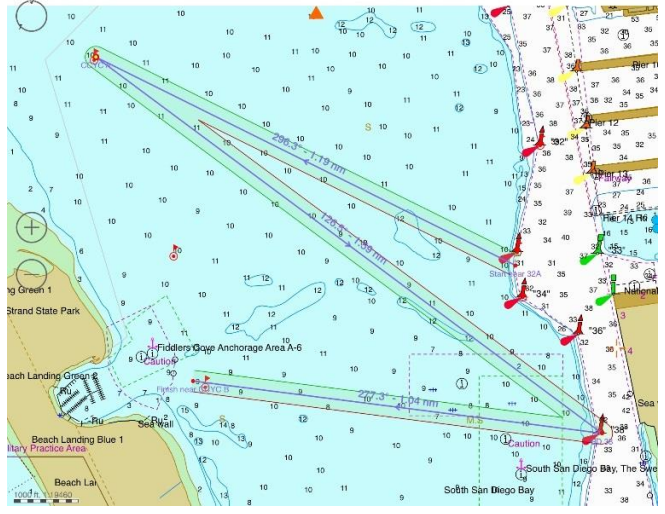
Course S1	3.31nm Start - CCYC A - SD 34 - Finish
Course S2	3.82nm Start - CCYC A - SD 38 - Finish
Course S3	2.0nm Start - CCYC A - Finish
Course S4	4.69nm Start - CCYC B - SD 36 - CCYC B - SD 36 - Finish
Course S5	2.54nm Start - CCYC B - SD 36 - Finish
Course S7	2.62nm Start - Mark "O" - SD 34 - Finish
Course S8	2.89nm Start - Mark "O" - SD 36 - Finish
Course S9	4.4nm Start - Mark "O" - SD 34 - Mark "O" - SD 34 - Finish

# Summer Series Course Diagrams

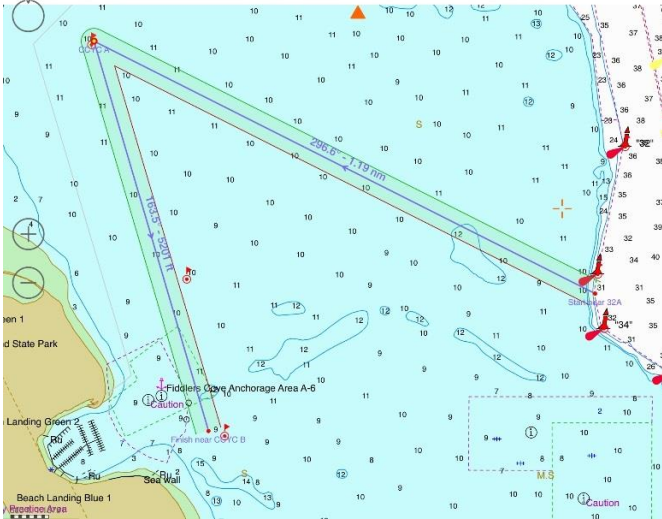
Course S1 diagram



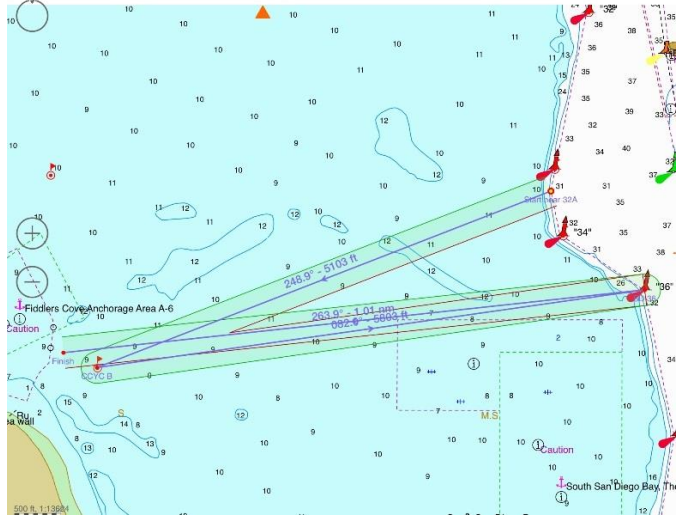
Course S2 diagram



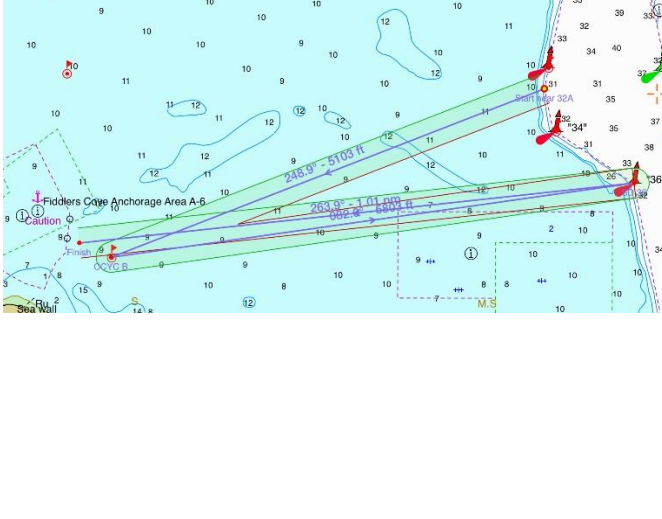
Course S3 diagram



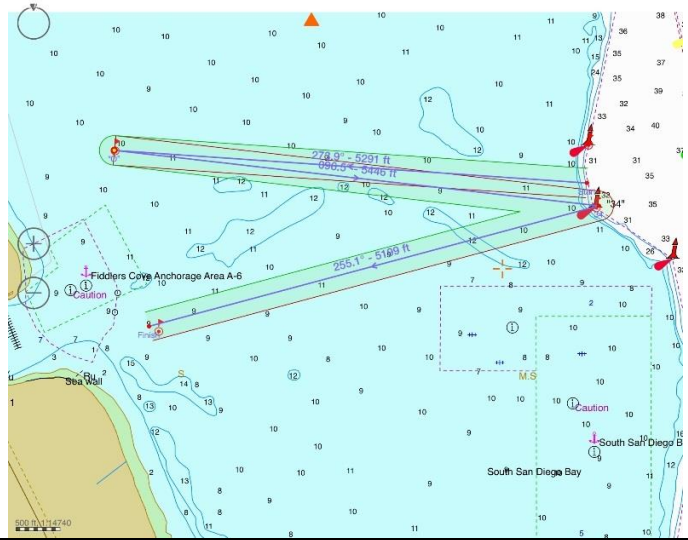
Course S4 diagram



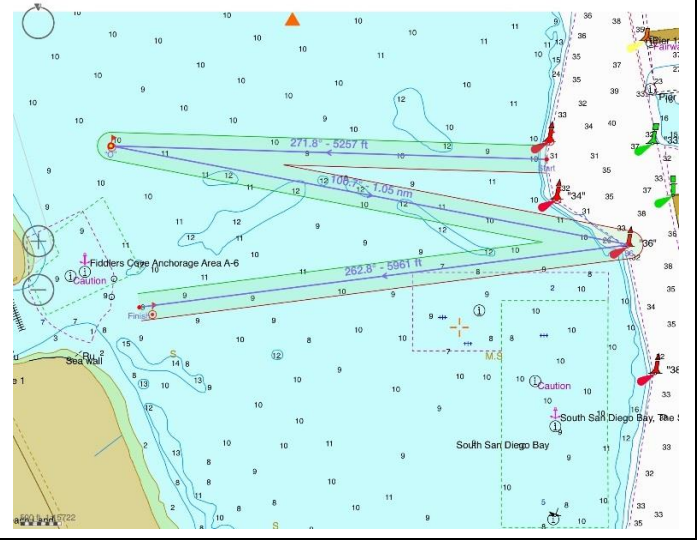
Course S5 diagram



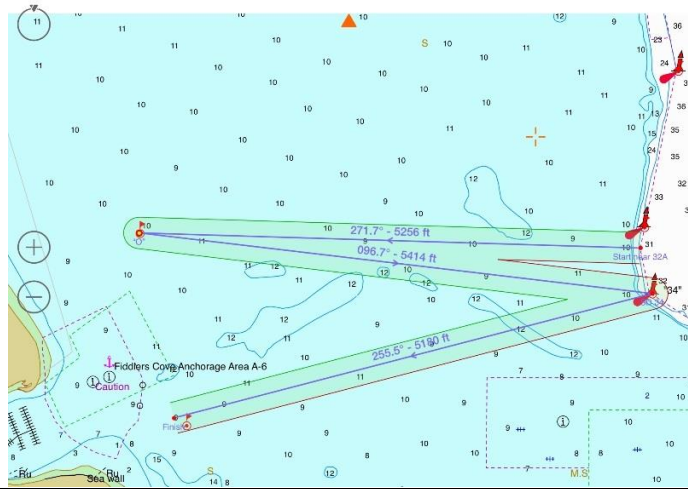
Course S7 diagram



Course S8 diagram



Course S9 diagram



Finish

