



PJYC 'Gear Tester'

Saturday, May 22nd, 2021

SAILING INSTRUCTIONS

1. RULES

- 1.1. This race will be governed by the rules defined in *The Racing Rules of Sailing* ("RRS"), including *US Sailing Prescriptions*.
- 1.2. **Rule Change:** The Finishing Line is changed to use an Orange flag on the Committee Boat as one end of the line. This changes RRS "Race Signals"/"Other Signals" in the flags section at the end of the RRS.
- 1.3. **Radio:** Each boat will carry a VHF radio capable of sending/receiving on marine channels 16 and 72, and will monitor channel 72 continuously as that is the channel the Race Committee will use to coordinate the race.

2. CHANGES TO THE SAILING INSTRUCTIONS

- 2.1. Any change to the sailing instructions will be posted before 1900 the day before the race. These will be posted to the race notice board as described below in 'COMMUNICATIONS'.
- 2.2. Changes to these Sailing Instructions may be made on the water. The Race Committee will broadcast to all boats on VHF 72.

3. COMMUNICATIONS WITH COMPETITORS

- 3.1. Notices to competitors, including these Sis, NORs, and race status updates, will be posted to the race web site at:
https://www.regattanetwork.com/clubmgmt/applet_notice_board.php?regatta_id=22402
- 3.2. On the water, the race will be coordinated on VHF channel 72.
- 3.3. From the first warning signal until the end of the race, except in an emergency, a boat shall not make voice or data transmissions and shall not receive voice or data communication that is not available to all boats.

4. CODE OF CONDUCT

4.1. Competitors and support persons shall comply with reasonable requests from race officials.

5. SIGNALS MADE ASHORE

5.1. Signals made Ashore will be posted on the notice board of the event web page at: https://www.regattanetwork.com/clubmgmt/applet_notice_board.php?regatta_id=22402

And at or near the PJYC Dock House.

5.2. When flag AP is made ashore, '1 minute' is replaced with 'not less than 60 minutes' in RRS 'Race Signals'/'AP' at the end of the RRS book.

6. SCHEDULE OF RACES

6.1. One race is planned for Saturday May 22nd, 2021 with the first division warning at 1300.

6.2. The race distance will be set for an approximate duration of 2 hours for the fleet average based on wind conditions.

7. RACING AREA

7.1. The racing area will start approximately 1.25 nm NE of the Port Jefferson Harbor East Breakwater. Mark 'SF' will be used as one end of the Start/Finish line, with the Committee Boat at the other end.

8. COURSES

8.1. A Chart of the course area and marks is in Appendix A below. This is the PJYC standard weekend course area.

8.2. The course will usually be chosen from one of the pre-selected courses found in Appendix C below. These are assigned a letter and number based on wind direction and strength. The Race Committee will announce the course letter and number from both the starboard side of the committee boat and on VHF channel 72.

9. MARKS

9.1. The possible Marks are listed in Appendix B below with coordinates.

10. THE START

10.1. The starting line will be between mark 'SF' and an orange flag on the committee boat.

10.2. The race will use the standard Rule 26 starting sequence.

10.3. Divisions after the first will have their warnings one minute after the prior division start signal.

10.4. Boats whose warning signal has not been made shall avoid the starting area during the starting sequence for other divisions.

11. THE FINISH

11.1. The finish line will be between the 'SF' mark and an ORANGE flag staff on the committee boat. This changes RRS "Race Signals"/"Other Signals" in the flags section at the end of the RRS. (Which specifies a blue flag)

TIME LIMITS

11.2. The time limit for each division will be 3 ½ hours from its starting signal.

12. RISK STATEMENT

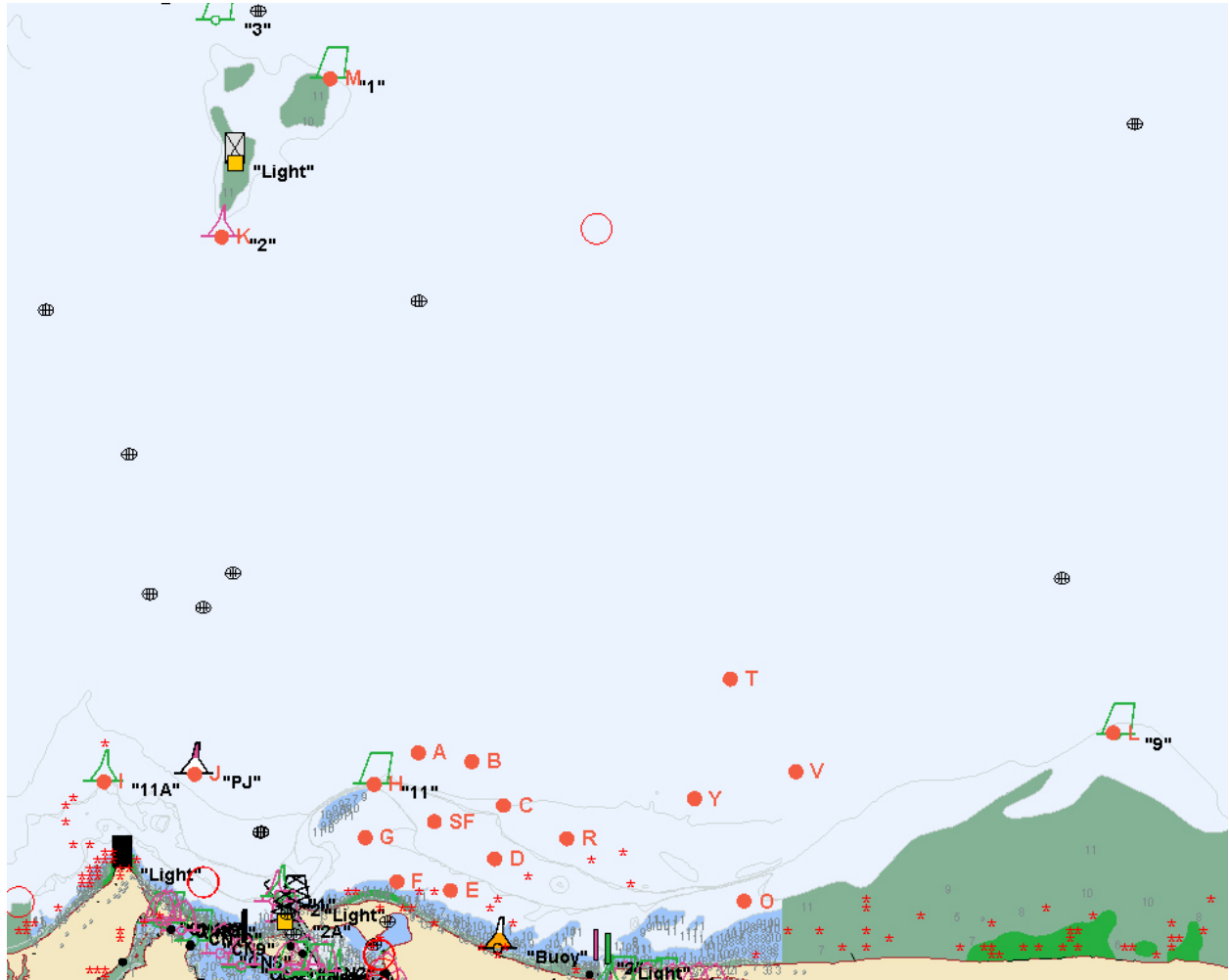
12.1. Competitors participate in the regatta entirely at their own risk. See rule 3 of the RRS, Decision to Race. The organizing authority will not accept any liability for material damage or personal injury or death sustained in conjunction with, prior to, during, or after this event.

13. FURTHER INFORMATION

Contact Dave Hubbard
PJYC Fleet Captain
davechub@gmail.com
1-516-313-7617

APPENDIX A

Course Area Chart



APPENDIX B

Marks

Note 1: The 3 formats are all the same location for each mark, just in the 3 most commonly used notation. Negative longitudes are also called 'West' in some systems.

Example: '-73 04.210' is the same as '73 04.210W'.

Note 2: Marks 'SF' and 'A' thru 'H' are the 'Olympic Circle' marks used for the Tuesday Night Series. Marks 'I' thru 'N' and the MSSA marks are primarily used for distance races on weekends.

| Name | Decimal Degrees | | Decimal Minutes | | Decimal Seconds | |
|------------------------------|-----------------|-------------|-----------------|------------|-----------------|---------------|
| | Latitude | Longitude | Latitude | Longitude | Latitude | Longitude |
| SF (Start/Finish) | 40.9823507 | -73.0701660 | 40 58.941 | -73 04.210 | 40 58 56.463 | -73 04 12.598 |
| A | 40.9904476 | -73.0726919 | 40 59.427 | -73 04.362 | 40 59 25.611 | -73 04 21.691 |
| B | 40.9894241 | -73.0643671 | 40 59.365 | -73 03.862 | 40 59 21.927 | -73 03 51.721 |
| C | 40.9842568 | -73.0594400 | 40 59.055 | -73 03.566 | 40 59 03.324 | -73 03 33.984 |
| D | 40.9779731 | -73.0607966 | 40 58.678 | -73 03.648 | 40 58 40.703 | -73 03 38.868 |
| E | 40.9742537 | -73.0676408 | 40 58.455 | -73 04.058 | 40 58 27.313 | -73 04 03.507 |
| F | 40.9752770 | -73.0759638 | 40 58.517 | -73 04.558 | 40 58 30.997 | -73 04 33.470 |
| G | 40.9804436 | -73.0808914 | 40 58.827 | -73 04.853 | 40 58 49.597 | -73 04 51.209 |
| H (G 11) | 40.9867283 | -73.0795361 | 40 59.204 | -73 04.772 | 40 59 12.222 | -73 04 46.330 |
| I (G 11a) | 40.9869567 | -73.1215050 | 40 59.217 | -73 07.290 | 40 59 13.044 | -73 07 17.418 |
| J (PJ Approach RW) | 40.9878761 | -73.1074128 | 40 59.273 | -73 06.445 | 40 59 16.354 | -73 06 26.686 |
| K (R 2 Middle Ground) | 41.0511119 | -73.1034072 | 41 03.067 | -73 06.204 | 41 03 04.003 | -73 06 12.266 |
| L (G 9 Rocky Pt) | 40.9928767 | -72.9647136 | 40 59.573 | -72 57.883 | 40 59 34.356 | -72 57 52.969 |
| M (G 1 E of Middel Ground) | 41.0697758 | -73.0865400 | 41 04.187 | -73 05.192 | 41 04 11.193 | -73 05 11.544 |
| N (R 18 SE of Stratford Pt.) | 41.1136336 | -73.1359453 | 41 06.818 | -73 08.157 | 41 06 49.081 | -73 08 09.403 |
| O (MSSA Mark O) | 40.9730333 | -73.0220333 | 40 58.382 | -73 01.322 | 40 58 22.920 | -73 01 19.320 |
| R (MSSA Mark R) | 40.9803833 | -73.0495833 | 40 58.823 | -73 02.975 | 40 58 49.380 | -73 02 58.500 |
| T (MSSA Mark T) | 40.9992000 | -73.0242167 | 40 59.952 | -73 01.453 | 40 59 57.120 | -73 01 27.180 |
| V (MSSA Mark V) | 40.9882833 | -73.0140000 | 40 59.297 | -73 00.840 | 40 59 17.820 | -73 00 50.400 |
| Y (MSSA Mark Y) | 40.9850833 | -73.0297667 | 40 59.105 | -73 01.786 | 40 59 06.300 | -73 01 47.160 |

APPENDIX C

NON-SPIN WEEKEND COURSES

Note: Pink Shaded Marks are from the Mount Sinai Sailing Association (MSSA)
in the Marks list in Appendix B.

| | | | | | | | | | |
|-----------|---|----|---|----|----|----|----|----|----------|
| N | 1 | SF | A | E | Y | SF | | | 5.18 nm |
| | 2 | SF | A | E | V | SF | | | 6.65 nm |
| | 3 | SF | A | E | V | A | E | SF | 8.24 nm |
| | 4 | SF | M | E | SF | | | | 11.59 nm |
| NE | 1 | SF | B | F | Y | SF | | | 5.52 nm |
| | 2 | SF | B | F | T | SF | | | 6.57 nm |
| | 3 | SF | B | F | T | G | F | SF | 7.94 nm |
| | 4 | SF | B | M | F | SF | | | 11.61 nm |
| E | 1 | SF | C | A | G | C | G | SF | 4.42 nm |
| | 2 | SF | C | A | G | Y | SF | | 6.10 nm |
| | 3 | SF | L | SF | | | | | 9.67 nm |
| | 4 | SF | L | G | SF | | | | 10.66 nm |
| SE | 1 | SF | D | B | H | D | SF | | 3.41 nm |
| | 2 | SF | D | H | D | Y | SF | | 5.82 nm |
| | 3 | SF | D | H | D | V | SF | | 7.29 nm |
| | 4 | SF | D | Y | K | SF | | | 11.55 nm |
| S | 1 | SF | E | C | A | E | A | SF | 4.41 nm |
| | 2 | SF | E | A | E | Y | SF | | 6.18 nm |
| | 3 | SF | E | A | E | V | SF | | 7.65 nm |
| | 4 | SF | E | A | M | SF | | | 11.59 nm |

| | | | | | | | | | |
|-----------|---|----|---|---|----|----|----|----|----------|
| SW | 1 | SF | F | D | B | F | B | SF | 4.41 nm |
| | 2 | SF | F | B | F | Y | SF | | 6.52 nm |
| | 3 | SF | F | E | T | F | B | SF | 7.61 nm |
| | 4 | SF | F | E | T | F | T | SF | 11.19 nm |
| W | 1 | SF | G | E | C | G | C | SF | 4.42 nm |
| | 2 | SF | G | R | V | SF | | | 6.19 nm |
| | 3 | SF | G | E | V | G | C | SF | 8.36 nm |
| | 4 | SF | G | L | SF | | | | 10.66 nm |
| NW | 1 | SF | H | F | D | H | D | SF | 4.41 nm |
| | 2 | SF | H | D | V | SF | | | 6.29 nm |
| | 3 | SF | H | F | D | V | H | SF | 7.61 nm |
| | 4 | SF | H | D | K | SF | | | 10.69 nm |

SPINNAKER WEEKEND COURSES

| | | | | | | | | | |
|-----------|---|----|---|----|----|----|----|----|----------|
| N | 1 | SF | A | E | A | E | SF | | 3.99 nm |
| | 2 | SF | A | E | V | A | SF | | 7.24 nm |
| | 3 | SF | A | K | F | SF | | | 9.61 nm |
| | 4 | SF | A | K | E | A | E | SF | 11.78 nm |
| NE | 1 | SF | B | F | B | F | SF | | 3.99 nm |
| | 2 | SF | B | F | T | B | SF | | 6.67 nm |
| | 3 | SF | B | K | F | SF | | | 9.82 nm |
| | 4 | SF | B | M | I | F | B | SF | 14.32 nm |
| E | 1 | SF | C | J | SF | | | | 4.42 nm |
| | 2 | SF | C | I | C | SF | | | 6.65 nm |
| | 3 | SF | L | SF | | | | | 9.67 nm |
| | 4 | SF | L | J | SF | | | | 13.05 nm |
| SE | 1 | SF | D | J | SF | | | | 4.42 nm |
| | 2 | SF | D | J | D | H | SF | | 6.40 nm |
| | 3 | SF | D | H | I | E | I | SF | 10.88 nm |
| | 4 | SF | D | I | D | I | D | SF | 12.24 nm |
| S | 1 | SF | E | J | SF | | | | 4.21 nm |
| | 2 | SF | E | A | I | E | SF | | 6.79 nm |
| | 3 | SF | E | K | SF | | | | 9.78 nm |
| | 4 | SF | E | K | E | A | E | SF | 12.77 nm |
| SW | 1 | SF | F | B | J | SF | | | 5.18 nm |
| | 2 | SF | F | B | J | F | B | SF | 6.57 nm |
| | 3 | SF | F | B | K | I | SF | | 11.88 nm |
| | 4 | SF | F | B | K | I | F | SF | 12.22 nm |

| | | | | | | | | | |
|-----------|---|----|---|---|----|----|----|----|----------|
| W | 1 | SF | G | C | G | C | SF | | 4.00 nm |
| | 2 | SF | G | C | I | G | SF | | 6.71 nm |
| | 3 | SF | G | L | SF | | | | 10.66 nm |
| | 4 | SF | G | L | J | SF | | | 14.05 nm |
| NW | 1 | SF | H | J | G | SF | | | 3.55 nm |
| | 2 | SF | H | I | D | H | SF | | 6.72 nm |
| | 3 | SF | H | D | K | SF | | | 10.69 nm |
| | 4 | SF | H | D | K | D | H | SF | 12.59 nm |