

2021 SPRING REGATTA

MAY 1-2nd

SAILING INSTRUCTIONS

1 RULES

- 1.1 The Regatta will be governed by the current Racing Rules of Sailing, together with the rules of the participating classes and any additional sailing instructions to be issued at the competitors' meeting.

2.1 NOTICE TO COMPETITORS

- 2.1 Notices to competitors will be posted on the official notice board located on the East window of the WRSC clubhouse

3 SIGNALS MADE ASHORE

- 3.1 Signals made ashore will be displayed from the flagpole located at WRSC. When flag AP is displayed ashore, '1 minute' is replaced with 'not less than 1 hour' in the race signal AP.

4 SCHEDULE OF EVENTS

- 4.1 Saturday
0830 Late on-site registration opens in the clubhouse
0915 Late on-site registration closed
0930 Competitors' meeting (at flagpole or inside if raining)

First Warning Signal:

1100 A-Cat and Catamaran Open Classes

The Race Committee (RC) will announce the order of starts for the first race at the competitors' meeting.

- 4.2 Sunday
1030 First warning signal for all classes
1430 No races will start after this time
Awards will follow racing.

- 4.3 Number of Races: There is no limit to the number of races. The committee will attempt to maximize racing for the conditions available.

5 CLASS FLAGS

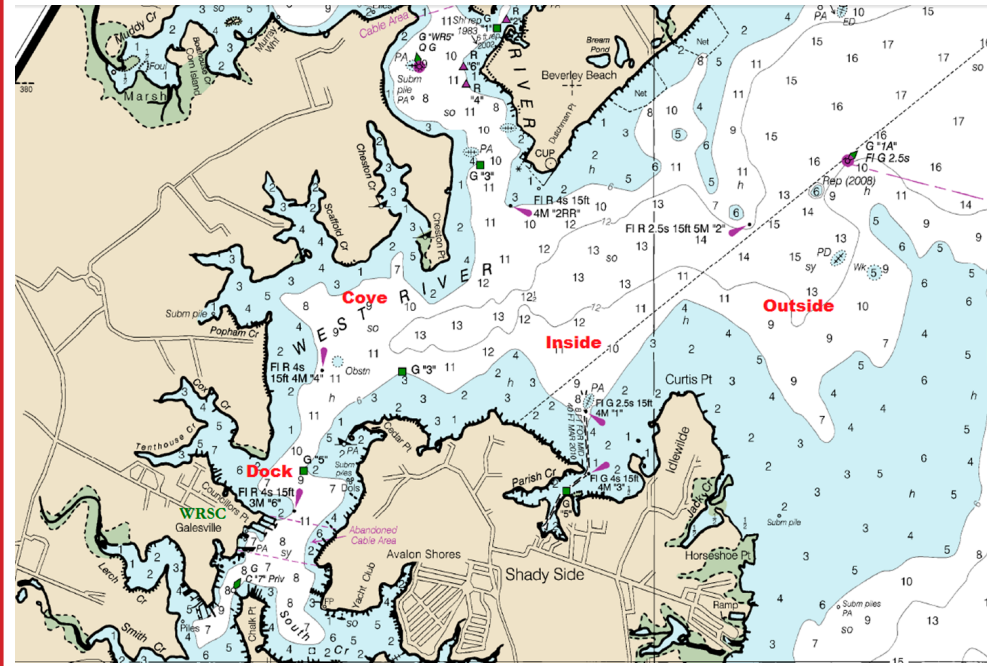
- 5.1 Class flags will be the respective insignia or as described at the competitor's meeting.

6 RACING AREA

- 6.1 The venue shall be finalized by the RC on race day. WRSC typically races on the West River or on the west side of the bay just outside of the river entrance for this event.

2021 SPRING REGATTA SI's

6.1



7 THE COURSES

7.1 The course will be as shown in Appendix A. .

8 MARKS

8.1 The marks will be as described in Appendix A.

9 THE START

9.1 The starting line will be between a staff displaying a yellow flag on the RC signal boat and the course side of the port-end starting mark to be left to port.

10 THE FINISH

10.1 The finishing line will be between a staff displaying an orange flag on the race committee vessel and the course side of the finishing mark.

11 TIME LIMITS

- 11.1 The first boat must finish within 90 minutes
- 11.2 Boats failing to finish within 20 minutes after the first boat sails the course and finishes will be scored DNF without a hearing. This changes RRS 35, A4, and A5.

12 PROTESTS AND REQUESTS FOR REDRESS

12.1 Protest Forms are available at the bar. Protests and requests for redress or reopening shall be delivered to the PRO within one hour after the RC returns to the dock.

13 SCORING

- 13.1 One (1) race is required to be completed to constitute a series
- a When fewer than 5 races have been completed, a boat's series score will be the total of her race scores.

2021 SPRING REGATTA SI's

b

When from 5 to 11 races have been completed, a boat's series score will be the total of her race scores excluding her worst score.

c

When 12 or more races have been completed, a boat's series score will be the total of her race scores excluding her two worst scores.

14 SAFETY REGULATIONS

14.1 Before starting their first race of the day, all competitors' boats shall sail astern the signal boat, give their sail number and be acknowledged by the race committee.

14.2 A boat that retires from a race shall notify the race committee as soon as possible.

15 SUPPORT BOATS

15.1 Support boats shall be marked with the letters WRSC or as described at the competitor's meeting.

16 RADIO COMMUNICATION

16.1 Except in an emergency, a boat that is racing shall not make voice or data transmissions and shall not receive voice or data communications that is not available to all boats. This restriction also applies to mobile telephones but does not apply to communications to notify the RC that a competitor is leaving the race area.

17 PRIZES

17.1 For each class, prizes will be given to the first-place finisher in classes with three or fewer entries, the first two finishers in classes with six or fewer entries, and the first three finishers in classes with seven or more entries. Prizes for the A-Cat class will be awarded for Foiling and Classic boats as separate classes.

18 DISCLAIMER OF LIABILITY

18.1 Competitors participate in the regatta entirely at their own risk. See RRS 4, Decision to Race. The organizing authority will not accept any liability for material damage or personal injury or death sustained in conjunction with or prior to, during, or after the regatta.

19 ON LAND SAFETY REGULATIONS

19.1 All competitors must follow all WRSC Covid-19 Policies while on WRSC property. The main policy, "WRSC Covid-19 Safety Plan & Guidelines," can be found on the regatta webpage below. Guiding signage can be found around the property as needed.

westriversc.com/2021ecc

19.2 All competitors are required to sign and turn in (either through digital upload on the regatta webpage or a printed version handed in the day of) WRSC's US Sailing Covid-19 Liability Form. The form can be found on the regatta webpage (link below).

westriversc.com/2021ecc

APPENDIX A

1 COURSE

- 1.1 Courses will be Windward-Leeward as drawn below designated by the letter W posted on the starboard side of the signal boat. The number of legs will be designated after the letter (i.e. "W4" indicates windward, leeward, windward, then finish to leeward). The course will be posted prior to the Preparatory signal.
- 1.2 All marks shall be rounded on port.
- 1.3 RC can change the Leeward Mark into a Leeward Gate.
- 1.4 A "W5" designates that there will be a finish line above the windward marks.

2.1 MARKS

- 2.1 Small round red/orange marks will be used for the offset, starting, and finish pins. Yellow cylinders will be used as the windward and leeward marks. An orange trapezoid shall be used as the change of course mark.
- 2.2 The marks shall be as described above unless otherwise described at the competitor's meeting.

