



Waikiki Yacht Club
1599 Ala Moana Blvd
Honolulu, Hawaii, 96814
808.995.4405 | regatta@waikikiyachtclub.com

Sailing Instructions

D.J.JOHNSON AROUND OAHU REGATTA

May 29th, 30th & 31st, 2021

1. RULES:

- 1.1. The regatta will be governed by the rules as defined in the Racing Rules of Sailing (RRS), the prescriptions of US SAILING, pertinent Class/Fleet Rules, by the Waikiki Yacht Club Standing Sailing Instructions, the Notice of Race and these Sailing Instructions.
- 1.2. The RRS are changed as follows:
 - 1.2.1. Rule 52 - The use of powered winches is authorized.
 - 1.2.2. Rule 49 does not apply to Multihulls.
 - 1.2.3.6.4 Redress: RRS 60, 63.2, 63.4, US Sailing Prescriptions to RRS 60 (Participation Committee composition) are deleted.
 - 1.2.4. Rule 55 does not apply for spinnaker stopping materials only. It still applies to trash.
- 1.3. While racing, each competitor will make their position available to the Race Committee via RaceQs app. Competitors are prohibited from tracking one another while racing via RaceQs app.

2. **NOTICES TO COMPETITORS:** Notices to competitors will be posted on the official notice board located in the WYC on the regatta board for the first day, on the KYC bulletin board for the second day and available from the Race Committee boat for the third day.
3. **CHANGES TO THE SAILING INSTRUCTIONS:** Any change to the sailing instructions will be posted before 0900 on the day it will take effect. Except on the third day, they will be passed out from the race committee boat.

4. **SIGNALS MADE ASHORE:** Signals made ashore will be displayed from the WYC flagpole for day one, the KYC flagpole for day two and all signals will be made from the race committee boat on day three.

5. SCHEDULE OF RACING:

See appendix A for Saturday, May 29th, 2021

See appendix B for Sunday, May 30th, 2021

See appendix C for Monday, May 31st, 2021

6. PROTESTS AND REQUESTS FOR REDRESS

- 6.1 Protest forms are available at WYC or online. Protests and requests for redress or reopening shall be delivered there or via email to rc-sail@waikikiyachtclub.com within two hours of last boat's completion.
- 6.2 Protests will be heard in approximately the order received as soon as possible.
- 6.3 Protest notices will be delivered via email and competitors will be informed by phone where and when there is a hearing in which they are parties or are named as witnesses at a date to be determined after the regatta.

7. REQUIREMENTS FROM DNLN:

7.1 Our permit does not authorize the use of any beach parks or facilities, please contact city parks at 768-3440 or appropriate agencies.

7.2 All boats shall follow all navigational rules at all times while in the ocean waters.

7.3 Each boat operator shall have passed the boater safety education class and have their boater safety education card on them during the use of the motorized vessels.

7.4 Participants shall take all precautions during the event and be aware that there are multiple events occurring on the same days throughout Oahu ocean waters.

8. FURTHER INFORMATION;

Sean Doyle (808)389-6435 or rc-sail@waikikiyachtclub.com

Gary Evoniuk (919)599-3111 or geevoniuk@gmail.com

APPENDIX A
May 29, 2021
Day 1

Racing Area: The racing area will be off the leeward and windward shores of Oahu

The Course: The course will be Start – DH to port – Finish. Boats shall pass all islands to seaward. Approx. 27 NM.

Signals: Class Flags as described below will be displayed for each classes Warning Signal.

| | |
|----------------------|-------------|
| PH A & B, X | Pink with X |
| Multihulls, Cruising | Blue with M |

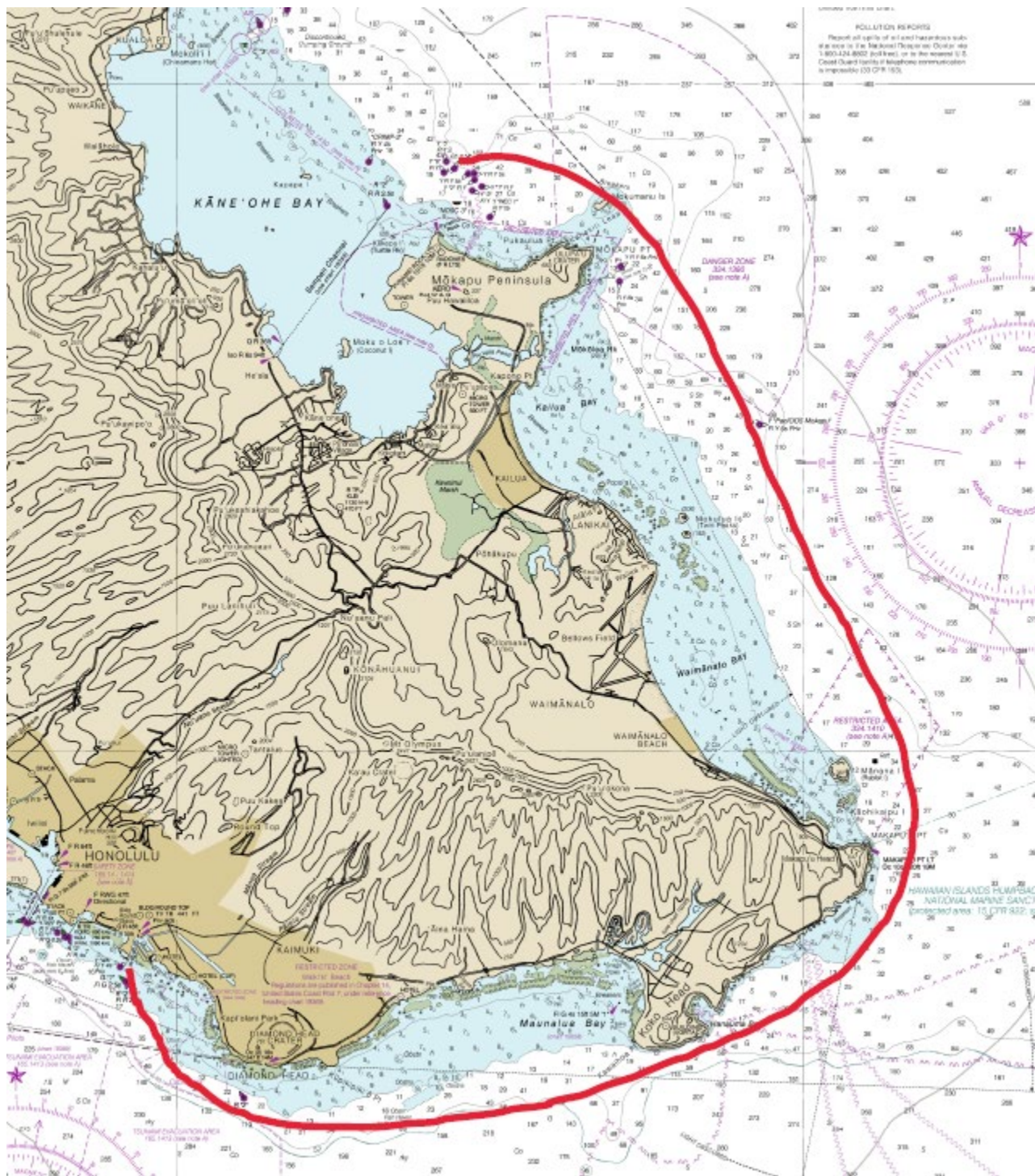
The Start: The start will be located approx. ¼ mile southeast of the Ala Wai Harbor Entrance. The Starting Line will be between two yellow inflatable buoys. A boat shall not start later than 10 minutes after her starting signal.

| <u>Class</u> | <u>Warning</u> | <u>Start</u> |
|-----------------------|----------------|--------------|
| PH A, B & X | 0955 | 1000 |
| Multihulls & Cruising | 1005 | 1010 |

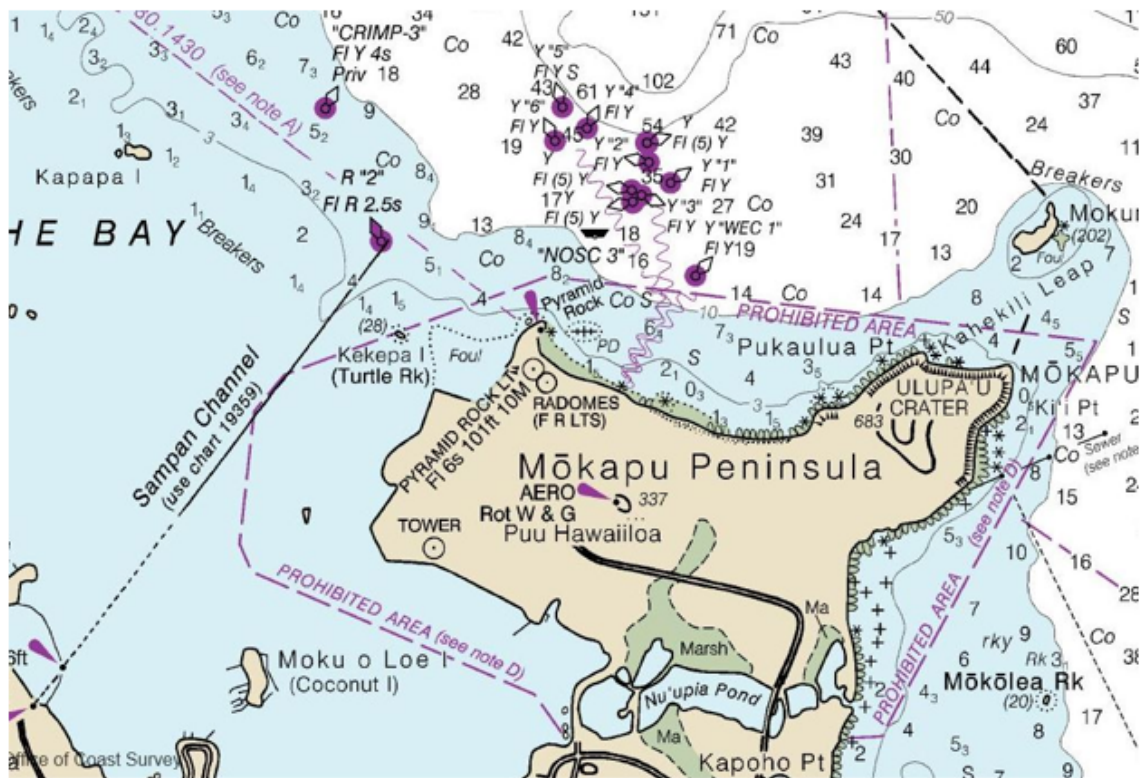
The Finish: The finish is at Kaneohe Bay Sampan Channel entrance. The finish line is inside the Sampan Channel entrance buoy R2 with R2 to starboard and at a bearing to land of 207 magnetic. The Race Committee Boat may be on station inside the Sampan Channel and boats may communicate on **VHF Channel 68** to verify their finish times. If Race Committee Boat is not on station boats shall finish and report their finish times (name of boat, time of day of finish in HH:MM:SS) to the Race Committee via text to Sean Doyle (808)389-6435 within one hour of finishing.

Safety: Any boat that starts but returns to Waikiki rather than finishing at KYC should contact Race Committee by VHF Channel 68 or by phone at (808)389-6435.

Entering into Kaneohe Bay and Mooring: Boats with a draft over 7 ft. should use the Main Ship Channel to enter Kaneohe Bay. You will be contacted by Sean Doyle for mooring at Kaneohe Yacht Club.



NOAA Chart 19357 25th Ed., Mar. 2013. Last Correction 1/11/2017. Cleared through: LNM: 0717 (2/14/2017, NM: 0817 (2/25/2017)



APPENDIX B
May 30, 2021
Day 2

Racing Area: The racing area will be off the windward and north shores of Oahu.

The Course: The course will be: Start – Mark X to port - Exit Kaneohe Bay via the Main Ship Channel - Finish at entrance to Haleiwa Harbor – Approx. 33 NM.

Marks: Mark X will be an inflatable buoy set approximately ¼ mile windward of the start line.

Signals: Class Flags as described below will be displayed for each class's Warning Signal.

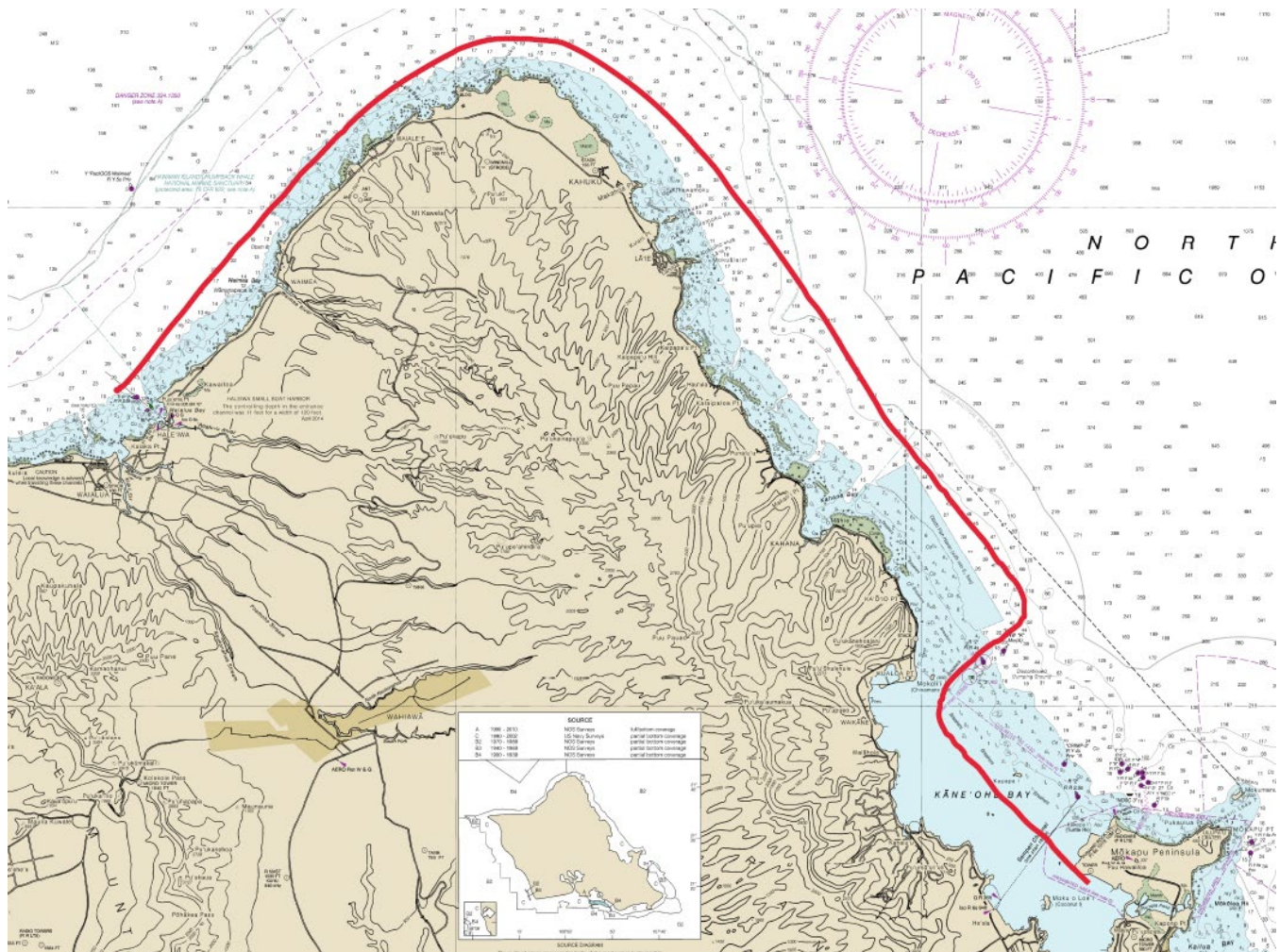
| | |
|----------------------|------------|
| PH A & B | All Blue |
| PH X | All Yellow |
| Multihulls, Cruising | C20 Flag |

The Start: The starting line will be between an orange floating pylon and flag and the staff of an orange flag on the Race Committee Boat located inside the primary racing area of Kaneohe Bay near Mokapu and Coconut Island. A boat shall not start later than 10 minutes after her starting signal.

| <u>Class</u> | <u>Warning</u> | <u>Start</u> |
|-----------------------|----------------|--------------|
| PH A, B | 0855 | 0900 |
| PH X | 0900 | 0905 |
| Multihulls & Cruising | 0905 | 0910 |

The Finish: The finish is at the entrance to Haleiwa Harbor. The finish line is inside Haleiwa Harbor buoy R2 with R2 to starboard and at a bearing to land of 135 magnetic. Race Committee will be on station at Haleiwa Beach Park and boats may communicate on **VHF Channel 68** to verify their finish times. If Race Committee Boat is not on station boats shall finish and report their finish times (name of boat, time of day of finish in HH:MM:SS) to the Race Committee via text to Sean Doyle (808)389-6435 within one hour of finishing.

MOORING: Contact Sean Doyle to assist in arranging mooring at Haleiwa, Waianae, Pokai Bay or others. It is each entrant's responsibility to secure mooring for the second day. Mooring applications can be filed at any of the state harbors. Required documents include but are not limited to: vessel registration, vessel proof of insurance and photo identification.



APPENDIX C
May 31, 2021
Day 3

Racing Area: The racing area will be off the leeward shore of Oahu.

The Course: The course will be Start – Pass to seaward of all harbor entrance buoys – Finish at Ala Wai Channel entrance. Approx. 26 NM

Areas That Are Obstructions: Note the Prohibited area as indicated on attachment 1.

Signals: Class Flags as described below will be displayed for each class's warning signal.

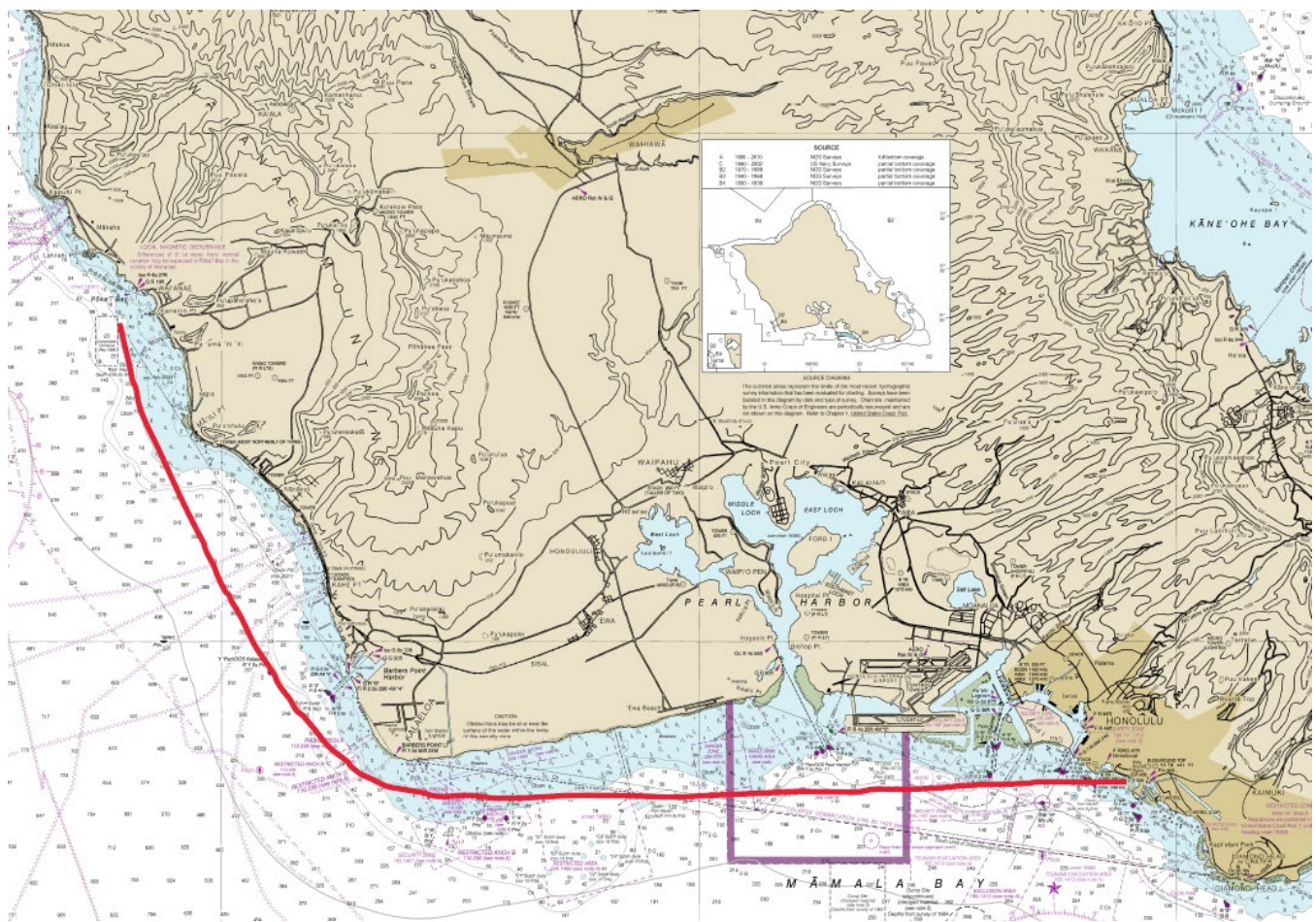
| | |
|----------------------|-------------|
| PH A & B, X | Pink with X |
| Multihulls, Cruising | Blue with M |

The Start: The Starting Line will be between an inflatable buoy and the staff of an orange flag on the Race Committee Boat. It will be located to seaward of Pokai Bay. A boat shall not start later than 10 minutes after her starting signal.

| <u>Class</u> | <u>Warning</u> | <u>Start</u> |
|-----------------------|----------------|--------------|
| PH A, B & X | 1025 | 1030 |
| Multihulls & Cruising | 1030 | 1035 |

The finish: The finish is at Ala Wai channel entrance. The finish line is inside Ala Wai Channel entrance buoy R2 with R2 to starboard and at a bearing to land of 000 magnetic. If Race Committee Boat is on station in the Ala Wai Channel, boats may communicate on **VHF Channel 68** to verify their finish times. If Race Committee Boat is not on station boats shall finish and report their finish times (name of boat, time of day of finish in HH:MM:SS) to the Race Committee via text to Sean Doyle (808)389-6435 within thirty minutes of finishing.

Prizes: Prizes will be awarded at approximately 1700 at WYC.



Attachment 1 – Prohibited Area

