



SAILING INSTRUCTIONS



Commodore Classic Race

May 23, 2021

HOSTED BY:

Ventura Yacht Club

1755 Spinnaker Drive

Ventura, California 93001

www.venturayachtclub.org

1. RULES:

This race will be governed by the *Racing Rules of Sailing*, the prescriptions of the USSA, the rules of the PHRF of Southern California (except as any of these are altered by these Sailing Instructions), the Notice of Race, these Sailing Instructions, and by any instructions that may be announced by the Race Committee (RC) from its station. Except for brief breaks not to exceed five (5) minutes in duration, a Staff, Rear, Vice, or Commodore must be at the helm at all times. These breaks may not occur during the starting sequence or within five (5) minutes of rounding a mark or finishing, nor at any time in which a tactical advantage would be gained. The PHRF Marine Industry Racer (MIR) Rule is not in effect for this race.

2. ENTRIES, HANDICAP ADJUSTMENTS:

2.1 ***In light of the ongoing Covid-19 pandemic, the County of Ventura has mandated that boats participating in this event must be slipped/docked/stored within Ventura County.***

2.2 **Eligible boats are to enter by completing registration online by going to www.venturayachtclub.org. Follow the links (Water>Racing>) to Regatta Network. You are strongly encouraged to register BEFORE race day.**

2.3 PHRF Area A Random Leg handicaps will be used and Commodore Classic Rating Adjustments (see Paragraph 8) will be allowed. Boats may request a rating adjustment for this race by submitting a Commodore Classic Rating Adjustment Form (found on page 2 of the NOR) showing the cruising inventory carried onboard.

2.4 Boats not carrying a spinnaker will be credited with their PHRF Non-Spinnaker Offset as an additional adjustment to their handicap for the race. Boats must declare "Non-Spinnaker" on their entry to be scored with their Non-Spinnaker Offset.

2.5 PHRF membership is not required. Boats without a valid handicap will be assigned a temporary handicap for this event by the RC.

3. NOTICES TO COMPETITORS:

Notices to competitors will be conveyed to all competing boats by the RC on station by display of code flag "L" on the Committee Boat AND by hail on VHF channel 69 AND will be posted on the VYC bulletin board in the lower patio.

4. CHANGES IN SAILING INSTRUCTIONS:

Changes in the Sailing Instructions will be conveyed to all competing boats by the RC on station by display of code flag "L" on the Committee Boat AND by hail on VHF channel 69.



SAILING INSTRUCTIONS



5. SCHEDULE OF RACE:

The warning signal for all boats is scheduled for 1155 hours on May 23, 2021.

6. CLASSES:

There will be one class. All entries will start together and sail the same course. The color of the class flag for starting will be **RED**.

7. **FLAGS:** Skippers are encouraged to fly their club burgee and appropriate commodore flag.

8. COMMODORE CLASSIC CRUISER RATING ADJUSTMENTS:

These adjustments are in increments of seconds per mile applied to the base ratings for spinnaker boats and if registered as non-spinnaker, the Non-Spinnaker Rating.

	+9 Fixed 3-Blade Prop
	+6 Fixed 2-Blade Prop
	+3 Anchor with Chain (100'- 200') stored in the bow
	+6 Anchor with Chain (>200') stored in the bow
	+6 Dacron Genoa
	+6 Dacron Main
	+6 Roller Furling Headsail
	+9 Roller Furling Mainsail – no battens (in mast only)
	+6 Roller Furling Mainsail – with battens (in mast only)
	+3 Largest Genoa LP 135% of J
	+6 Largest Genoa LP 110% of J
	+4 Spinnaker is tacked to the bow, or to a bow roller (≤ 6”)

Note: If a boat's Performance Factor (PF), as calculated under PHRF Appendix A, is greater than 1.75, then her Commodore Classic Rating will be adjusted according to the following formula: $((PF - 1.75) \times PF \times 40)$

9. THE COURSES:

9.1 The courses will be chosen from the 2021 Commodore Classic Course Chart which is part of these Sailing Instructions.

9.2 Designation of the course to be sailed will be signaled from the race committee boat before or with the warning signal.

9.3 When an oil platform is a mark of the course, its associated mooring buoy(s) will also be considered marks of the course. Such buoys are to be rounded on the same side as the oil platform is to be rounded (i.e., to port or to starboard).

10. CHECKING IN:

Each boat is required to check-in before the warning signal. The check-in period begins after the RC boat is anchored. A boat may check-in either by passing close by the stern of the committee boat and hailing her sail number until acknowledged by the RC, or by calling the RC on VHF channel 69.



SAILING INSTRUCTIONS



11. THE START:

Starting line S will be between the Ventura Harbor entrance whistle buoy "R2" as the port-side mark and an orange flag or shape on the Committee Boat as the starboard-side mark.

12. RECALLS:

- 12.1 Individual recalls will be signaled in accordance with Racing Rule 29.1 [code flag "X" and 1 sound signal]. After the starting signal, the Race Committee will attempt to hail the sail number(s) of the recalled boat(s) on VHF Channel 69
- 12.2 General recalls will be signaled in accordance with Racing Rule 29.2 [code flag "first substitute" and 2 sound signals]. A new warning signal will be made one minute after the "first substitute" is lowered.
- 12.3 The following shall **not** be grounds for granting redress:
 - a. Failure of a boat to hear the recall hail or broadcast.
 - b. A boat's position in the sequence of hailed numbers or broadcast numbers.
 - c. Failure of the Race Committee to hail or broadcast numbers.

13. THE FINISH:

- 13.1 The finish shall be on a line from the VYC clubhouse balcony to the green light standard (#3) near the southwest end of the detached Ventura Harbor breakwater.
- 13.2 Finishers are requested to notify the RC when approaching the finish line. If the RC is not on station, boats shall record their own finish times. The RC will monitor VHF Channel 69 throughout the race.
- 13.3 Shortly after finishing, it is requested that spinnakers be struck in order to maintain safe maneuverability and legal speed in the harbor.

14. TIME LIMIT:

If any boat finishes before 5pm, the race is valid. If no boat finishes before 5pm, the race is abandoned.

15. RETIREMENT:

A boat that has started and subsequently retires is requested to notify the RC as soon as possible. The RC will monitor VHF channel 69. Club phone number is 805-642-0426.

16. PROTESTS:

Protests shall be written on forms available at VYC and shall be filed with the Race Committee within one (1) hour of the finish of the protesting boat or within one (1) hour after she returns to port if she retires.

17. SCORING:

The Low-Point Scoring System (Appendix A4 of the Racing Rules) will apply.

18. SAFETY AND EQUIPMENT:

All boats must conform to USCG and US Sailing Safety Equipment Requirements (USSER) for a US Sailing Nearshore Race as modified below. USSERs are available online at ussailing.org (click on *Safety*).

- 18.1 USS SER 2.4.4 is in effect for this race and modified to require lifelines even if they are not uncoated stainless steel.



SAILING INSTRUCTIONS



18.2 USS SER 3.19.1 is modified to allow compasses like the TACK TICK and Velocitek Shift (non GPS) magnetic compasses with mounted brackets as long as they are tethered so the device may not be lost overboard.

18.3 USS SER Rule 3.8.2 is in effect for this race and modified to require a water proof VHF or a VHF with a water proof cover even if it does not have DSC/GPS capability.

18.4 USS SER 3.3.1 is modified to allow running lights that are mounted below deck level (common on 90's and earlier boats).

18.5 A minimum of 2 crew is required.

19. NON-SPINNAKER ENTRY DEFINITIONS:

19.1 No spinnakers or spinnaker-like sails such as flashers, cruising 'chutes, MPSs, gennakers, etc. are allowed. All headsails and their use must meet the criteria of Racing Rule 54, 55.3 and 55.4.

19.2 Only one whisker pole may be used at a time and, when in use, shall be attached to the foremost mast. Whisker pole maximum length shall not exceed 1.4 X J.

19.3 Use of headsails larger than 155% LP carries a 6 second per mile penalty unless the boat is already handicapped for such larger sail.

19.4 More than one headsail may be carried set, and the headsails need not be attached to the forestay.

20. TROPHIES:

Awards will be presented at the party following the race at Ventura Yacht Club. Skippers, crew and guests are all welcome.

21. INSURANCE:

Each participating boat shall have valid third-party liability insurance.

22. RISK, DISCLAIMER OF LIABILITY, PERSONAL CONDUCT:

22.1 Competitors participate in the regatta entirely at their own risk. See RRS Rule 3, Decision to Race. The organizing authority will not accept any liability for material damage or personal injury or death sustained in conjunction with or prior to, during, or after the regatta.

22.2 The Skipper/Owner of each boat participating in the regatta shall be responsible for the behavior of each member of the crew of his/her boat both on the water and while ashore. The destruction of property, the breach of reasonable standards of good sportsmanship by any crew member, or any other person associated with the boat, or the failure of any of those persons to comply with any reasonable request of any Race Officer, Regatta Committee member, or their representatives, may result in the disqualification of the boat, and its exclusion from the regatta.

22.3 Competitors are expected to conduct themselves in a sportsmanlike manner at all times and to abide by the host club rules.

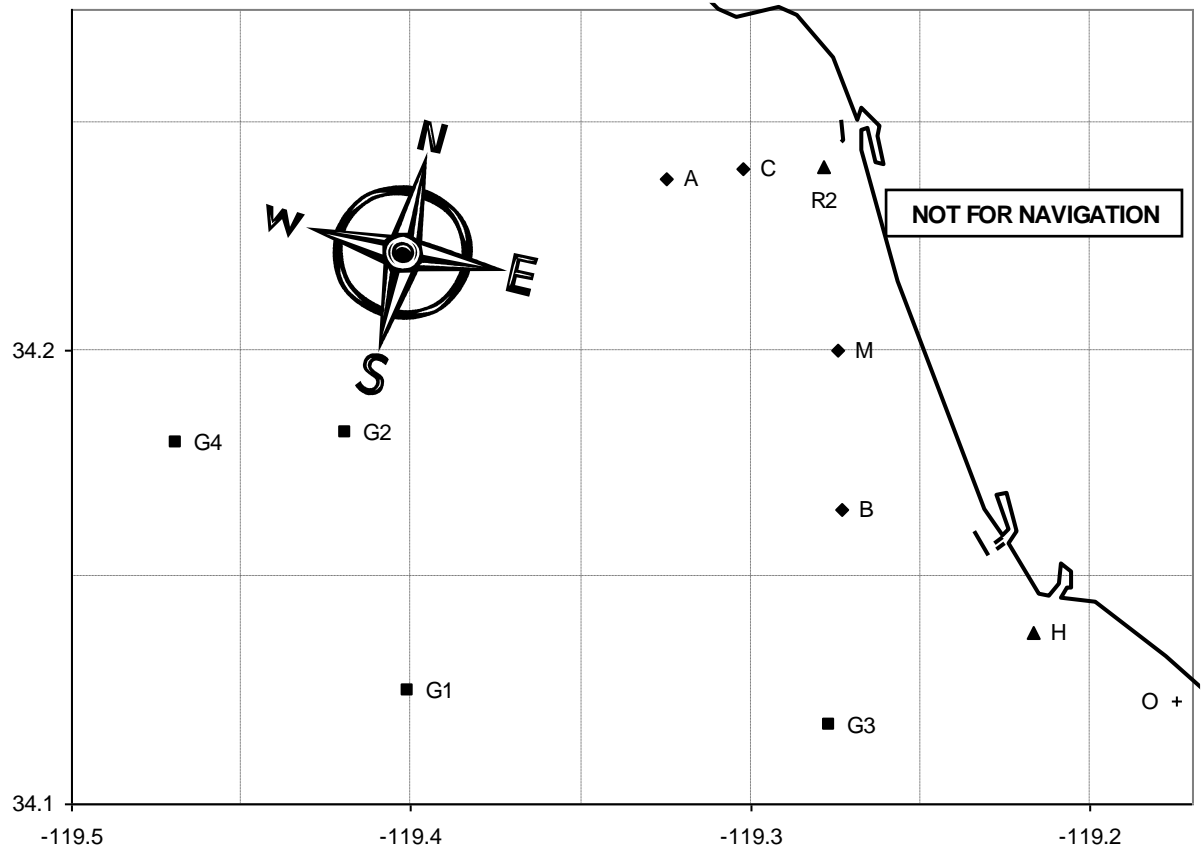


SAILING INSTRUCTIONS



2021 Commodore Classic Race Course Chart

#	Course	Approximate Magnetic Heading To First Mark	Approx. Length
1	S Bs As F	165	12.84
2	S Mp R2s F	161	5.4
3	S Ms As F	161	9.14
4	S Ms G2s F	161	18.37
5	S G3s R2s F	180	15.28
6	S G1s R2s F	220	19.18
7	S G2s F	245	16.46
8	S Ap F	257	5.49
9	S Ap Cp Ap F	257	8.72
10	S Ap R2p Cp F	257	7.55
11	S Ap Mp R2s F	257	9.25
12	S Ap R2p Cp R2p Cp F	257	9.55
13	S Ap Bp R2s F	257	12.95
14	S Ap Mp R2p Ap F	257	14.28
15	S Ap Bp R2p Ap F	257	17.98
16	S Cp F	252	2.37
17	S Cp R2p Cp F	252	4.37
18	S Cp R2p Cp R2p Cp F	252	6.37
19	S Ap Mp R2p Cp F	257	11.18
20	S Cp Mp R2p Cp F	252	8.55
21	S Cp Mp R2s F	252	6.6





SAILING INSTRUCTIONS



	MARKS	APPROXIMATE LOCATION	
A	Fish Sticks spar buoy	L: 34° 14.5'N	Lo: 119° 19.9W
B	"Wes" Mark	L: 34° 09.9'N	Lo: 119° 16.5W
C	Chips spar buoy	L: 34° 14.4'N	Lo: 119° 17.9'W
H	Hue Whistle buoy RW"PH"	L: 34° 08.3'N	Lo: 119° 13.0'W
M	Mandalay spar buoy	L: 34° 12.0'N	Lo: 119° 16.5'W
O	Ormond Buoy	L: 34° 7.4'N	Lo: 119° 10.5'W
R2	Vta Whistle buoy R"2V"	L: 34° 14.4'N	Lo: 119° 16.7'W
S	Start in vicinity of Mark R2; see Sailing Instructions		
F	Finish at Ventura Harbor; see Sailing Instructions		
G1	Platform Gail	L: 34° 07.5'N	Lo: 119° 24.1'W
G2	Platform Gilda	L: 34° 10.9'N	Lo: 119° 25.2'W
G3	Platform Gina	L: 34° 07.0'N	Lo: 119° 16.6'W
G4	Platform Grace	L: 34° 10.8'N	Lo: 119° 28.1'W