

# **SAILING INSTRUCTIONS – Updated June 15, 2021**

## **TEXAS SAILING ASSOCIATION YOUTH CIRCUIT REGATTA**

### **THE ROCKIN' ROCKPORT REGATTA**

**Rockport\_Yacht Club, 722 Navigation Circle, Rockport, Texas**

**June 19-20, 2021**

#### **1. RULES:**

- 1.1 The regatta will be governed by the rules as defined in *The Racing Rules of Sailing* (RRS).
- 1.2 “The Texas Youth Racing Circuit Conditions” apply and are available on the web site at <http://www.txsail.org/>. A copy will also be available at the regatta site.
- 1.3 The rules for all classes are altered so that membership in a class organization is not required
- 1.4 RRS 61.1(a), Protest Requirements and Appendix A2, Scoring Systems are modified for this series. RRS 49.1 is changed to allow the use of hiking pants.
- 1.5 All boats shall have sail numbers which match the registration form. Sail numbers meeting class standards are required.
- 1.6 The Organizing Authority is the Rockport Yacht Club
- 1.7 Appendix T, Arbitration, will be used.

#### **2. NOTICES TO COMPETITORS:**

These Sailing Instructions and other Notices to competitors will be posted on the Regatta Notice Board located inside the clubhouse by the restrooms at the Rockport Yacht Club, 722 Navigation Circle, Rockport, Texas.

#### **3. CHANGES IN SAILING INSTRUCTIONS:**

- 3.1 Any change to the sailing instructions will be posted on the Regatta Notice Board at least one hour before the first race of each day, except for changes to the schedule of races which will be posted by 1900 on the day before they take effect.
- 3.2 For the Green Fleet only, oral changes may be made by the Race Committee on the water prior to the time of the warning signal of any race upon the raising of signal flag “L” with one sound.

#### **4. SIGNALS MADE ASHORE:**

- 4.1 Signals made ashore will be displayed from the flagpole or yardarm at the Club or from the Race Committee Boat if docked in the Rockport Harbor by/near the Clubhouse.
- 4.2 Code Flag “AP” with two sound signals means the race is postponed. DO NOT leave the club area. The warning signal will not be made sooner than 30 minutes from the lowering of “AP”, accompanied by one signal. This modifies “Race Signals”.

#### **5. SCHEDULE OF RACES:**

- 5.1 Subject to the decisions of the Race Committee, six or more races are scheduled.
- 5.2 Completion of one (1) race shall constitute a TSA Youth Circuit Regatta.

**5.3** Schedule:

Saturday, June 19, 2021

0800-0930	Breakfast
0800-0915	Registration and check-in at the Rockport Yacht Club Clubhouse
0930	Skipper's Meeting at the Rockport Yacht Club Clubhouse. (Attendance Mandatory)
1100	Warning Signal for the first race, additional races to follow
Between Races	Lunch will be provided to sailors during breakfast to take with them for use on the water; or provided at the Rockport Yacht Club Clubhouse for the Opti Green Fleet and other non-participants


Sunday, June 20, 2021

0730-0900	Breakfast
1000	Warning Signal for the first race, additional races to follow
1400	No first warning signal after this time
TBD	The lunch and awards ceremony will be served at the Rockport Yacht Club Clubhouse one hour after the last race of the day

**6. CLASS FLAGS:**

The following flags will be used as class flags during starting sequences:


**Optimist Green Racing Area:**

<b>Class</b>	<b>Class Flag</b>
Optimist Green	

**Optimist R/W/B Racing Area:**

<b>Class</b>	<b>Class Flag</b>
Optimist Red, White, and Blue Fleets	

**Laser/420 Racing Area:**

<b>Class</b>	<b>Class Flag</b>
Laser 4.7	

Laser Radial and  
Laser Standard Rig



**7. OPTIMIST GREEN FLEET IDENTIFICATION:**

Optimist green fleet will display a green streamer provided at registration at the top of the sprit pole while racing. Failure to display the streamer in the proper location may result in disqualification. It is the Skipper’s responsibility to insure the fleet streamer is properly secured and displayed.

**8. RACING AREAS:**

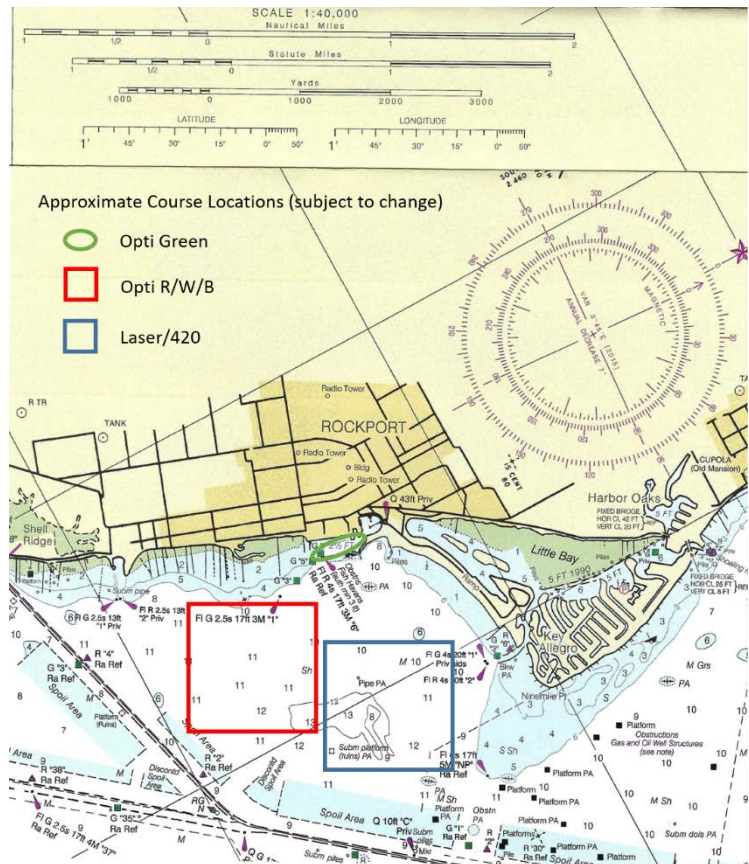
Three (3) racing areas will be set, one each for use by Optimist GREEN fleet, Optimist R/W/B fleets, and one for all other fleets. Approximate locations for each area are provided in Figure 1. The confirmed location of the racing areas will be announced at the Mandatory Skippers Meeting.

**9. CHECK-IN ON THE WATER:**

Prior to the first warning signal of the competitor’s fleet of the day, each competitor shall sail past the stern of the Race Committee Boat on starboard tack, hail its sail number and be acknowledged by the Race Committee. Failure to do so will result in a 20% penalty for the first race of the day.

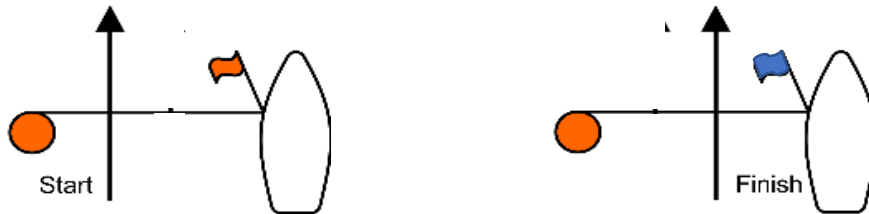
**10. RACE COURSES:**

- 10.1 There may be three types of race courses as follows: (windward/leeward) – windward, leeward, windward to finish; (triangle) – windward, reach, reach, windward to finish; or “O” (Olympic) – windward, reach, reach, windward, leeward, windward to finish. Multiple times around the course will be designated by a number flag following the “T,” “W” or “L”
- 10.2 Unless a race is shortened in accordance with the Rules, the start/finish line(s) will be in the middle of the windward leg.
- 10.3 The start/finish line(s) will be obstructions, except to finish. Boats that sail through an obstruction will be scored points equal to DNF, unless they properly unwind.

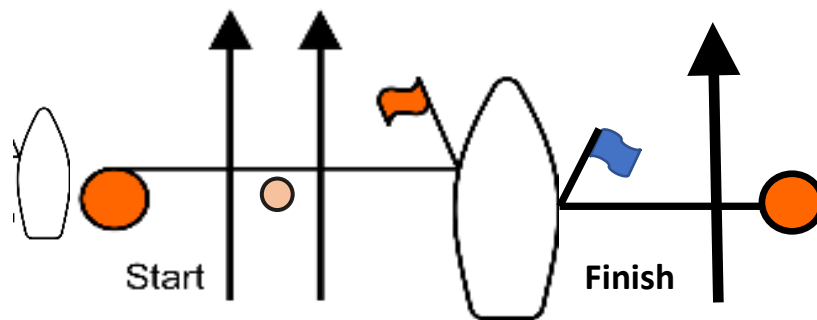


**Figure 1** “W” finish; “T”

**10.4** The start line will be identified with an orange flag displayed on the committee boat and a starting mark. The finish line will be identified with a blue flag displayed on the committee boat and a finishing mark.



**10.5** For larger fleets, a mid-point buoy may be set on and slightly behind the start line to assist in defining the line. This guide buoy is NOT a mark for the course. A support boat may locate at the starting mark to assist in identifying OCS boats. The finish line will be located on the starboard side of the committee boat, separate from the start line, denoted by a blue flag and separate finishing mark.



**10.6** The following diagrams show the courses to be sailed and the order in which the marks are to be rounded. These diagrams assume a single start/finish line and omit the blue flag.

		<b>Course W – Windward/Leeward, Windward Finish</b>	
		<i>Signal</i>	<i>Mark Rounding Order</i>
		W	Start – 1* – 2 – Finish
		W2	Start – 1* – 2 – 1* – 2 – Finish
		W3	Start – 1* – 2 – 1* – 2 – 1* – 2 Finish
		* - if an offset mark (1a) is present, sailors will leave the offset mark to port after rounding the windward mark (1)	

	<b>Course T – Triangle, Windward Finish</b>	
	<i>Signal</i>	<i>Mark Rounding Order</i>
	T	Start – 1 – 2 – 3 – Finish
	T2	Start – 1 – 2 – 3 – 1 – 2 – 3 – Finish
	T3	Start – 1 – 2 – 3 – 1 – 2 – 3 – 1 – 2 – 3 – Finish

	<b>Course O (Olympic) – Triangle, Windward/Leeward, Windward Finish</b>	
	<i>Signal</i>	<i>Mark Rounding Order</i>
	O	Start – 1 – 2 – 3 – 1 – 3 – Finish

**11. MARKS:**

- 11.1 For the Opti Green Fleet, marks will be round orange buoys.
- 11.2 For the Opti Red/White/Blue Fleet, marks will be orange tetrahedrons and round orange buoys (at start/finish line).
- 11.3 For the Laser fleets, the marks will be yellow cylinders and round orange buoys (at start/finish line).
- 11.4 To change the next leg of the course, the race committee will lay a new mark of the same shape and color and remove the original mark as soon as practicable. RRS 33a and 33b will apply for identifying the direction and/or length of the new leg. When in a subsequent change a new mark is replaced, it will be replaced with the original mark.

**12. THE START:**

- 12.1 For all fleets other than the Optimist Green Fleet, races will be started in accordance with RRS 26. The Optimist Green Fleet starting sequence will be shortened to 3 minutes (class flag up 3 min before start and preparatory flag up 2 min before start). A series of short signals may be made before any starting sequence begins in order to attract attention.

**12.2** The starting line will be between a staff displaying an orange flag on the Race Committee boat and the course side of the starting mark. For larger fleets a midpoint buoy which is NOT a mark may be used (see 10.4 and 10.5 of the SIs).

**12.3** A boat may not start later than 5 minutes after the starting signal for its class. Boats attempting to start after this time will be scored a DNS. This changes RRS A4.1.

**12.4** Boats whose warning signal has not been made shall keep clear of both the start line and all boats whose warning signal has been made.

**13. RECALLS:**

Recalls will be signaled in accordance with RRS 29. The race committee intends to hail the sail numbers of OCS boats after the starting signal. The failure of any boat to hear the hail, an untimely hail of OCS boats, failure to hail any boats, and the order of the boats in the hail shall not be grounds for granting redress. This changes RRS 41 and 62.1

**14. THE FINISH:**

**14.1** The finish line shall be between a staff displaying a blue flag on the Race Committee boat and the course side of the finishing mark (see para 10.4 and 10.5 of the SIs).

**14.2** The race committee may display flag A (with no sound) while boats are finishing to signal that there will be no more races that day.

**15. TIME LIMIT:**

**15.1** The time limit for each race will be 60 minutes for the first boat to finish.

**15.2** Boats failing to finish within 20 minutes after the first boat in their fleet will be scored TLE. TLE will be two (2) points more than the last boat to finish within the time limit, but no more than a score of DNF. This changes RRS 35, A5.1 and A5.2.

**15.3** At its discretion, the Race Committee may finish any boat in place, and it will be scored based on its position on the race course. This modifies RRS 32 and 35.

**15.4** A race may be abandoned by the Race Committee if the leading boat has not rounded the first mark within 20 minutes of the start. This modifies RRS 32.

**16. PROTESTS AND REQUESTS FOR REDRESS:**

**16.1** A boat intending to file a protest for an incident occurring in the racing area shall inform the race committee finish boat of its intent to protest immediately after finishing.

**16.2** Protests shall be in writing. Forms will be made available at the clubhouse, and delivered to the Regatta Chair or their representative there within sixty (60) minutes after the Committee Boat from the Competitors' race course docks.

**16.3** The protest time limit will be posted. A list of protests will attempt to be posted on the official notice board within ten (10) minutes of – but no later than thirty (30) minutes after – the end of protest time. This posting constitutes the notification required in RRS 61.1(b) and 63.2.

**16.4** A boat is not permitted to protest another boat for breaking sailing instructions 8, 10, 18, 19 and 20. This changes RRS 60.1(a). In addition, penalties for anything other than RRS Part 2 or 3 may be less than disqualification at the discretion of the protest committee.

**16.5** Appendix T, Arbitration, will be used. This modifies RRS 63.1 and 63.2.

**16.6** The person who served as mediator during Arbitration may not serve on the protest committee.

**17. SCORING:**

- 17.1** RRS A2.1 will apply, modified so that each boat's series score will be the total of her race scores with her worst score excluded if five (5) or more, but not ten (10), races are completed. If ten (10) races are completed, her two worst scores will be excluded.
- 17.2** For Optimist Red, White and Blue fleets, the event shall be scored as a whole with all boats receiving scores according to recorded finish position. "Overall Scoring" shall be used to determine Red, Blue, and White awards.
- 17.3** For Laser fleets, the regatta shall be scored as a whole with all boats receiving scores according to recorded finish position regardless of whether the sailor meets the age requirement of a junior sailor under the *Texas Youth Racing Circuit Conditions*. "Overall Scoring" shall be used to determine the finish place of each junior aged sailor for purposes of junior awards and junior place finish in the regatta. Awards will not be provided for adult sailors (i.e. those sailors who exceed the junior age eligibility limit).

**18. DISPOSAL OF TRASH:**

Boats observed purposefully discharging trash into the water will either be disqualified from all races sailed on the day the infraction is observed or be subject to other suitable disciplinary action or both.

**19. SAFETY:**

- 19.1** A U.S. Coast Guard-approved personal buoyancy device will be worn by all competitors while on the water. Wet or Dry suits are not considered adequate buoyancy devices for this purpose. All buoyancy devices shall be worn on the outside of all clothing. Sailors may wear a sailing pinny over buoyancy devices.
- 19.2** A competitor who withdraws from a race or does not intend to start a race shall inform the Race Committee as soon as possible. This may also be accomplished by the competitor returning to the club and notifying the Race Committee by radio from the Clubhouse.
- 19.3** Sailors of Double-Handed fleet boats are encouraged, but not required, to carry an emergency safety line cutter, such as an "S-Cutter" tool or harness webbing cutter.
- 19.4** The nearest emergency medical facility is ER 24/7 Rockport located at 400 Enterprise Blvd. in Rockport. Their phone number is 361-727-8200. For serious or life threatening injuries dial 911 to seek emergency response.

**20. SUPPORT BOAT RESTRICTIONS:**

- 20.1** Team leaders, coaches, parents and other support personnel shall keep at least two hundred (200) feet away from all competitors and shall not communicate with any racing competitor from the time of the competitor's preparatory signal until after the competitor has finished, or the Race Committee signals a postponement or abandonment. The Race Committee, at its discretion, may deem a violation of this provision to be a violation of RRS 2 and may impose a penalty which will be a scoring penalty per RRS 44.3(c.) applied to the finishes in the next race sailed of all boats associated with the support personnel who have violated this provision.

**20.3** All spectator and coach boats on the water shall monitor VHF Channel 16 (per USCG requirements); plus their race course VHF channel and provide safety support if needed.

<b>Race Course</b>	<b>VHF Channel</b>
Optimist Green	71
Optimist R/W/B	69
Laser/420	68

**20.4** Support boats shall neither create wakes nor otherwise interfere with competitors.

**20.5** All support boats and coaches are reminded to wear a safety kill-switch lanyard in accordance with the September 2019 Texas state law, especially when in the proximity of and approaching sailors in and on the water.

**20.6** Optimist Green Fleet: Notwithstanding 20.1, coaching of Green Fleet Optimist skippers while racing is permitted; however, coaching shall be limited to skippers in the bottom half of the fleet in any given race. Coaches shall provide fair and consistent support to all competitors, not just to their team or sailor.

**21. PRIZES:**

**21.1 Laser Standard fleet:** 1-3

**21.2 Laser 4.7 fleet:** 1-3

**21.3 Red fleet:** 1-3

**21.4 White fleet:** 1-3

**21.5 Blue fleet:** 1-3

**21.6 Opti overall:** 1<sup>st</sup> place

**21.7 Green fleet:** Participation medallions

**21.8 Outstanding sailor (sportsmanship):** Each fleet

Above all, HAVE FUN!