



Jazz Cup 33 – September 4, 2021

Sailing Instructions

1. Rules:

1.1. The race will be governed by the rules as defined in The Racing Rules of Sailing, latest edition.

1.2. RRS 40 is deleted and replace with “All competitors shall wear personal flotation devices at all times while racing except for short periods of time to adjust or change clothing. Wet suits are not considered personal flotation devices.” No Y flag will be displayed.

2. Communications with Competitors:

2.1. Changes to the Sailing Instructions and any notices to competitors will be posted by 20:00 on September 3, 2021, on the Jazz Cup electronic bulletin board,

<http://www.regattanetwork.com/event/22582>

2.2. Notices to competitors after the finish, will be posted on the Official Notice Board, in the Regatta Room, on the first floor of BYC, located on the wall opposite the first-floor bar (near the restroom doors).

3. Check-In:

3.1. Boats are requested to check in by radio between 0950 and 1050 on VHF **channel 78**. No radio check in will be accepted after 10:50. **When checking in, please give only your division and sail number.**

4. Schedule of Race:

4.1. The scheduled time of the **first warning signal for the race is 1100 hours.**

5. Racing Area:

5.1. The race area will be in the Central SF Bay, San Pablo Bay, and the Carquinez Straits.

6. The Course:

6.1. The course is described as:

Start, YRA 7 (starboard), R"2" Q R (starboard), R "2CR" (starboard), R"8" (port), Temp A (port), Temp B (port), Finish. See finish line chart below.

7. Description of Marks:

7.1. YRA 7 – R "2" FI R 6s approximately 1.0 nm NW of Treasure Island (chart 18650)

7.2. R "2" Q R – ½ nm west of Richmond Long Wharf (chart 18653)

7.3. R "2CR" – Castro Rock Buoy – FI R 4s (chart 18653)

7.4. R "8" – Pinole Shoal Channel – FI R 4s (chart 18654)

7.5. Temp A – A temporary tetrahedron buoy approximately .75 nm east of G "25" (chart 18656). See finish line chart below.

7.6. Temp B – A temporary tetrahedron buoy approximately 0.3 nm north of Temp A, between Temp A and the shore. See finish line chart below.

8. The Start:

8.1. The Starting Line will be between a staff displaying an orange flag on the Signal boat and the course side of an inflatable mark located near the **northeast end of Treasure Island**. The approximate coordinates of the Signal boat will be:

37.50.5976 N, 122.22.5435 W

8.2. Starting Order:

The warning signal for each succeeding class shall be the starting signal of the preceding class (**rolling starts**).

8.2.1. Starting Order Division (Division Flag)

8.2.2.1. Division D Non-Spinnaker All Boats - D (Delta)

8.2.2.2. Division E Spinnaker 151 and above - E (Echo)

8.2.2.3. Division F Spinnaker 126 to 150 - F (Foxtrot)

8.2.2.4. Division G Spinnaker 75 to 125 - G (Golf)

8.2.2.5. Division O YRA defined Sport Boats - O (Oscar)

8.2.2.6. Division H Spinnaker less than 75 - H (Hotel)

8.2.2.7. Division U Multi-Hull (Uniform)

9. Recalls:

9.1. Individual: The Race Committee may hail the sail number of the boat(s) identified on the course side of the starting line at the starting signal. Failure of a hail, failure to hear the hail or the order of the hails shall not be grounds for Redress. This changes RRS 62.1 (a).

10. The Finish:

10.1. The Finishing Line will be a line from a staff displaying an orange flag on the dock ashore Sander's Pier and an inflatable mark east of the entrance to Benicia Marina. See finish line chart below.

10.2. Boats retiring before finishing shall notify the Race Committee as soon as practical either on VHF 78 or Dan Courter (PRO) 925-209-3081.

11. Areas that are Restricted:

11.1. For safety, each of the following areas is an obstruction:

11.1.1. All prohibited areas described in 33 CFR 165.1181 for San Francisco Bay:

<https://www.law.cornell.edu/cfr/text/33/165.1181>

11.1.2. The area bounded by Limit Marks (white or yellow round buoy) and the north shoreline on the leg from mark Temp B and the Finish Line.

11.1.3. Boats are prohibited from sailing into any of these areas while racing.

12. Time Limit:

12.1. Boats that do not finish by 1900 hours will be scored “DNF”. This modifies RRS 35.

13. Post-Race Penalties:

13.1. RRS Appendix T1 applies; A boat may take a post-race penalty as described there.

14. Protests:

14.1. For each class the protest time limit is 60 minutes after the last boat has finished in the class. Protest forms are available at the Official Notice Board at the Benicia YC or from the Race Committee.

14.2. The time and place of all protest hearing(s), the boat(s) being protested and the boat(s) requesting redress will be posted on the Official Notice Board at the Benicia YC. It is each boat’s responsibility to check the Official Notice Board in a timely fashion to see if they are a party to a protest or redress hearing. This shall serve as proper notification per RRS 63.2.

15. Scoring:

15.1. PHRF Time-on-Time correction will be used. Corrected times will be calculated to the nearest second.

16. Trophies:

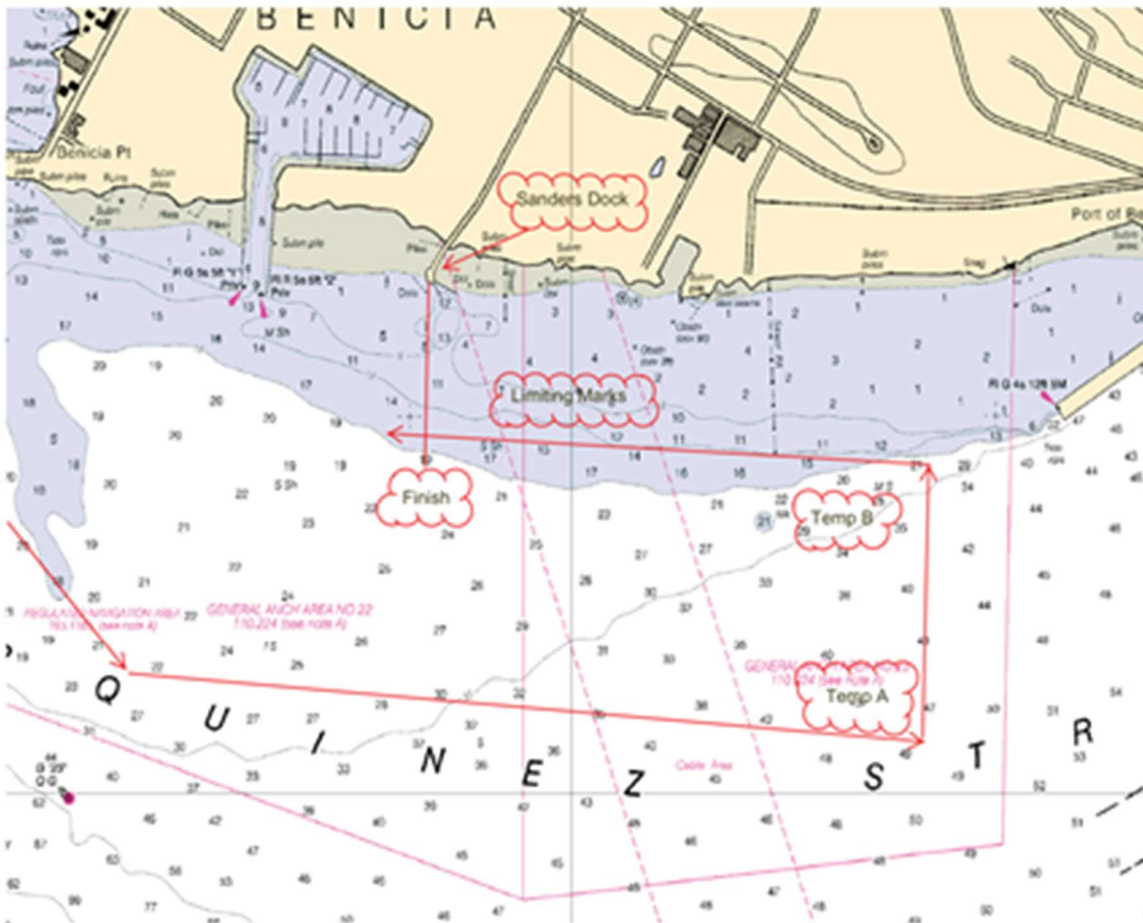
16.1. Trophies will be awarded on the day of the race or (sent by mail at the discretion of the Race Committee) at the Benicia Yacht Club at approximately 2000 or later, as necessary.

17. Disclaimer of Liability:

17.1. Boats and competitors compete in the regatta entirely at their own risk; see RRS 3 - Decision to Race.

The organizing authority, the South Beach Yacht Club, the Benicia Yacht Club and/or any of their collective agents or representatives will not accept any liability for material damage, personal injury, or death sustained in conjunction with or prior to, during or after the Regatta.

Jazz Cup Finish



The remainder of this document is not part of the Sailing Instructions

Covid-19 Advisory:

In a race with multiple crew members on each boat, traveling through multiple counties, the governing Covid-19 health order is left to the determination of the skipper and crew. Please consider age, health condition, and vaccination status of every member of the crew before deciding to race. **Anyone showing any sign of illness should not race. All racers should bring their proof of Covid-19 vaccination with them, as well as a face mask.** Please comply with any Covid-related request when visiting either organizing yacht club. Anyone not complying may be asked to leave. Your patience is appreciated.

In most cases, proof of vaccine may be downloaded to your phone here:

<https://myvaccinerecord.cdph.ca.gov/>

- **At South Beach YC**, proof of vaccination is required to sit indoors. Anyone not vaccinated must remain outdoors and wear a mask when not actively eating or drinking.
- **At Benicia YC**, a mask must be worn indoors any time you are not actively eating or drinking.

Hospitality:

Friday, September 3, 2021 – South Beach YC will host a Jazz Cup Kick off dinner (\$25/per person). **South Beach YC requires proof of completed Covid-19 vaccination to be seated inside the clubhouse. Those without proof will be required to remain outside and wear a mask.**

Saturday, September 4, 2021 – Benicia YC will have a BBQ, live music, and dancing (\$20/per person). The bar will be open all afternoon. So come early and enjoy the music and have fun! **Wearing a mask is required indoors when not actively eating or drinking. (The Benicia event is a public event and therefore must comply with Benicia city and Solano County health orders.)**

Sunday, September 5, 2021 – Breakfast will be available from 7:30 am to 10:00 am. Breakfast Burritos, Bloody Marys and Screwdrivers will be available for \$5 each - **cash only**. **Skippers - please call Angela at 707-208-2207 with a breakfast headcount for your vessel.**

Rafting Up in Benicia:

Please remember to follow the directions of the Harbor Master when rafting up Saturday afternoon and during the breakup on Sunday. It's important all Racers comply to ensure everybody has a GREAT time in Benicia.

Environmental Responsibility:

Participants are encouraged to minimize the environmental impact of the sport of sailing. The following are practices we would like to request skippers to include as part of their participation in the regatta:

- Prevent discharge of untreated sewage (discharge is currently prohibited by law).
- Use of non-toxic cleaning products.
- Keep a bilge sponge and fueling spill pad onboard.
- Encourage use of refillable water bottles instead of single-use plastic bottles.
- Use biodegradable products for eating utensils, napkins, plates, and cups.
- Use non-toxic bottom paint when possible.
- Contain pollutants from sanding or fairing on boats.