

2021 Heald Bank Regatta Presented by



June 26 – 27, 2021

Organizing Authority: Bay Access Sailing Foundation

Hosted by Lakewood Yacht Club

2322 Lakewood Yacht Club Drive

Seabrook, TX 77586

SAILING INSTRUCTIONS

The notation '[DP]' in a rule in the Sailing Instructions (SI) means that the penalty for a breach of a rule may, at the discretion of the protest committee, be less than disqualification.

1. RULES

- 1.1 The regatta will be governed by the rules as defined in The Racing Rules of Sailing (RRS).
- 1.2 Between dusk and dawn the rules of Part 2 of the RRS (When Boats Meet) are replaced by the International Regulations for Preventing Collisions at Sea 1972 (COLREGs).
- 1.3 Racing Rules are changed as follows:
 - 1.3.1 SI 11.1.4 changes RRS A1 and A5.
 - 1.3.2 SI 15.3 changes RRS 35, A4 and A5. (Scoring by RC)
 - 1.3.3 SI 17.3 changes RRS 60.1(b), 62.1(a), and 63.5. (ORC Three Factor and Redress)
 - 1.3.4 SI 18.4 changes RRS 42. (Motoring to avoid Interfering with Commercial Traffic)
 - 1.3.5 SI 18.5 changes RRS A5 and 63.1. (Disqualification for Interfering with Commercial Traffic)

2. NOTICES TO COMPETITORS

- 2.1 Notices to competitors will be posted on the official notice board located online on the NEWSROOM & RESULTS MENU. [Notice Board](#)

3. CHANGES TO SAILING INSTRUCTIONS

- 3.1 Any written change to the sailing instructions will be posted before 0900 hours on the day it will take effect, except that any change to the schedule of races will be posted by 2000 hours on the day before it will take effect.

Sailing Instructions

3.2 Oral changes to the sailing instructions may be given on the water by hail on VHF channel 72 in accordance with RRS 90.2(c). **IF** oral changes are to be announced, they will be communicated during the 10-minute period before the scheduled time for the warning signal in section 5.3, below.

4. SIGNALS MADE ASHORE

4.1 N/A

5. SCHEDULE OF RACES

5.1 Dates of racing:

Saturday, June 26th - Sunday, June 27th, 2021

5.2 Number of races: 1

5.3 The scheduled time for the warning signal for the first race is no earlier than 12:00:00

6. CLASS FLAGS and ORDER OF START

6.1 Class flags and order of start will be:

<u>Class</u>	<u>Flag</u>
Cruising Classic Canvas, Cruising Spinnaker, PHRF Non-Spin	Pink
ORC-Spinnaker	Green
Multihull	Navy Blue

7. RACING AREAS

7.1 Attachment 1 shows the location of the racing area.

8. THE COURSES

8.1 Courses for each class will be announced by VHF prior to the start.

8.2 The diagrams in Attachment 2 show the courses, including the approximate angles between legs, the order in which marks are to be passed, and the side on which each mark is to be left.

8.3 **Courses 1 and 2 will NOT be used as TABS Buoy "F" is not in place at this time.**

8.4 Courses will not be shortened. This changes RRS 32.

8.5 Legs of the course will not be changed after the preparatory signal. This changes RRS 33.

9. MARKS

9.1 Starting and Finishing Marks will be Houston Ship Channel Mark 11 (HSC11), G "11" Fl G 2.5s and an orange tarp on the official signal vehicle located on the shore of Galveston Island to the South.

9.2 Rounding Mark locations are listed in a table in Attachment 1.

- 9.3 Available photographs of certain marks are attached to these sailing instructions in Attachment 3.
- 9.4 In the event a mark is missing, boats shall round the GPS coordinates provided. Upon arrival at the missing mark, all boats should photograph the Coordinate Readout on their GPS and provide same to the race Committee as evidence that they did, indeed, clear the mark. billvanrav@gmail.com or text to 832.428.0785.

10. AREAS THAT ARE OBSTRUCTIONS

10.1 N/A

11. THE START

- 11.1 Races will be started using RRS 26.
- 11.2 The Starting Line is a line between Galveston Channel Green Marker #11 and an orange tarp located on the southern shoreline, approximately 1,100 yards distance, and at a bearing of approximately 205 degrees (Magnetic) from HSC Green Marker #11. CAUTION: Boats are advised to stay well clear of the shoreline to avoid shoal water!
- 11.3 Boats whose warning signal has not been made shall avoid the starting area during the starting sequence for other races. [DP]
- 11.4 A boat that does not start within 60 minutes after her starting signal will be scored Did Not Start without a hearing. This changes RRS A4 and A5.

12. CHANGE OF THE NEXT LEG OF THE COURSE

N/A

13. THE FINISH

- 13.1 The finishing line will be a line between Galveston Channel Green Marker #11 and an orange tarp located on the official signal vehicle parked on the Southern shoreline, approximately 1,100 yards distance, and at a bearing of approximately 205 degrees (Magnetic) from HSC Green Marker #11. **Caution: Boats are advised to stay well clear of the shoreline to avoid shoal water!**
- 13.2 Boats shall attempt to hail the Race Committee on VHF Channel 72 when passing Galveston Channel Marker 5A, identifying the boat by name and sail number.
- 13.3 Boats shall attempt to hail the Race Committee again on VHF Channel 72 when preparing to cross the finishing line, identifying the boat by name and sail number. Boats crossing the finish line at night shall display a light on their mainsail number.
- 13.4 13.4 If the Race Committee is absent or does not acknowledge when a boat finishes, she shall record her finish time as follows: Finish time shall be marked when Galveston Channel Marker Green Marker #11 is at a compass bearing of 025 degrees (Magnetic) from the vessel's helm. GPS time shall be used. She shall report her finishing time and her position in relation to any nearby boats to the race committee at the first reasonable opportunity. This may be done by contacting the Race Committee no later than 1500

hours, Sunday June 27, 2021. The information will be transmitted by email (billvanrav@gmail.com) or by text or voice recording to (832) 428-0785.

14. PENALTY SYSTEM

- 14.1 For the PHRF Cruising Classic Canvas non-spin class, RRS 44.1 is changed so that the One-Turn Penalty replaces the Two-Turns Penalty.
- 14.2 A boat that takes any penalty under RRS 44.2 shall notify the Race Committee at the first reasonable opportunity after finishing, identifying the location, time, and name of any other boat involved in the incident. Racers are reminded of rule 44.1.b

15. TIME LIMITS AND TARGET TIMES

- 15.1 Time limit is as follows:

Time Limit Expired
1500 hours, June 27

- 15.2 Boats failing to finish within the time limit will be scored Did Not Finish without a hearing. This changes RRS 35, A4 and A5.

16. PROTESTS AND REQUESTS FOR REDRESS

- 16.1 Boats intending to file a protest shall inform the race committee via VHF channel 72 within 10 minutes of that boat's finishing time by email (billvanrav@gmail.com) or by text to (832) 428-0785.
- 16.2 Blank protest forms are attached to these sailing instructions, or the form is available on the US Sailing app. Please send a picture of the form by email (billvanrav@gmail.com) or by text to (832) 428-0785.
- 16.3 The protest time limit is June 27th, 2021, 1700.
- 16.4 Notices of scheduled hearing times and locations will be posted within thirty (30) minutes of the expiration of the protest time limit to inform competitors of hearings in which they are parties or named as witnesses.
- 16.5 Notices of protests by the race committee or protest committee will be posted to inform boats under RRS 61.1(b).
- 16.6 N/A
- 16.7 A request for redress based on a protest committee decision shall be delivered no later than 30 minutes after the decision was posted. This changes RRS 62.

17. SCORING

- 17.1 Boats in ORC Class will be scored using time-on-time (TOT) scoring.
- 17.2 The ORC TOT scoring option will be selected by the race committee after the race, based on actual weather data collected on the course (provided by our official weather provider Weather Routing Incorporated (WRI)). The factor will be either the

Triple Number Windward/Leeward (low/medium/high) or the Triple Number All Purpose (low/medium/high). This supersedes the NOR.

17.3 The decision regarding the ORC parameter selected is not subject to a request for redress. This changes RRS 60.1(b), 62.1(a), and 63.5.

17.4 Other boats will be scored using TOD scoring.

18. SAFETY REGULATIONS

18.1 Check In – Boats shall check in with the Race Committee on VHF Channel 72 after 1100 on the day the race begins and prior to the first warning signal. Boats checking in shall report the number of individuals aboard. [DP]

18.2 A boat retiring from the race shall notify the Race Committee at the earliest opportunity, **and then again** when passing the finish line on returning to port. In both cases, retiring boats shall first attempt to notify the Race Committee via VHF Channel 72. Failing that, a retiring boat shall attempt to notify a competitor on the course for subsequent relay to the Race Committee. A retiring offshore boat shall also notify the Race Committee at cell number (832) 428-0785 no later than June 27th 2021 at 1200 hours. [DP]

18.3 A boat's failure to check in is not subject to protest by another boat.

18.4 If a skipper determines that it is necessary to use the boat's motor to maneuver, in order to avoid interfering with a ship's safe passage, he or she may do so. However, when motoring, the boat may not advance position, and may only use the motoring for clearing the ship passage lane. Once cleared, the boat shall immediately cease motoring. This changes RRS 42. As soon as practical, the skipper shall advise the Race Committee of any action taken in accordance with this rule.

18.5 **Interfering With Commercial Traffic:** A boat is subject to immediate disqualification, without a hearing, if the Race Committee receives a report from a disinterested party that the boat interfered with commercial traffic while transiting to the race area, while *racing*, or while transiting to her mooring after *finishing*. This modifies RRS A5 and 63.1.

19. REPLACEMENT OF CREW OR EQUIPMENT

19.1 Crew changes must be communicated to the Race Committee before the start. [DP]

19.2 All new crew must have submitted the required waiver of liability.

20. EQUIPMENT AND MEASUREMENT CHECKS

N/A

21. EVENT ADVERTISING

Competitor advertising will be restricted as follows: As a courtesy to our valued race sponsors, no advertising may be displayed on Lakewood Yacht Club premises without prior written permission of the Race Committee. [DP]

22. OFFICIAL BOATS

N/A

23. SUPPORT BOATS

N/A

24. TRASH DISPOSAL

Trash shall be disposed of in accordance with applicable laws.

25. HAUL-OUT RESTRICTIONS

N/A

26. DIVING EQUIPMENT AND PLASTIC POOLS

N/A

27. RADIO COMMUNICATION

The Race Committee will use VHF Channel 72 to communicate with racers, including the starting sequence. Except when communicating with the Race Committee on **VHF Channel 72** as provided for in these Sailing Instructions, all boats should monitor VHF Channel 16 and, when in or near the Houston Ship Channel, VHF Channel 13.

28. PRIZES

28.1 Prizes, will be given as follows:

28.1.1 One trophy: classes with three boats.

28.1.2 Two trophies: classes with four or five boats

28.1.3 Three trophies: classes with six to eight boats

28.1.4 The name of overall class winner in the Offshore Spinnaker class will be engraved on the Old Winch Trophy.

28.1.5 The name of overall class winner in the Offshore non-spinnaker classes will be engraved on the Navigator Trophy.

28.2 The RC may award additional prizes at their discretion.

29. DISCLAIMER OF LIABILITY

Competitors participate in the regatta entirely at their own risk. See RRS 4, Decision to Race. The organizing authority will not accept any liability for material damage or personal injury or death sustained in conjunction with or prior to, during, or after the regatta.

30. INSURANCE

Each participating boat shall be insured with valid third-party liability insurance with a minimum cover of \$300,000 per incident or the equivalent.

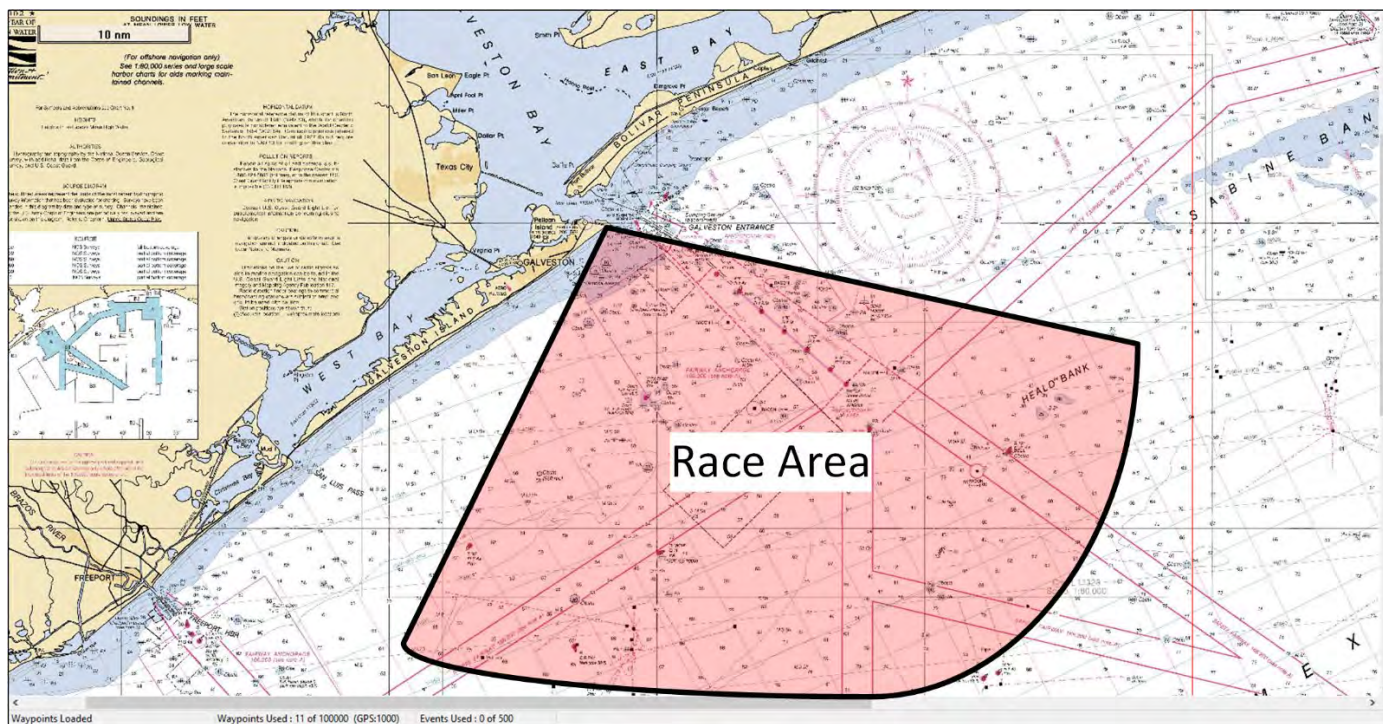
31. ATTACHMENTS

31.1 Attachment 1: Race Area & Mark Locations

31.2 Attachment 2: Courses

31.3 Attachment 3 Available Mark Photos



Race Area





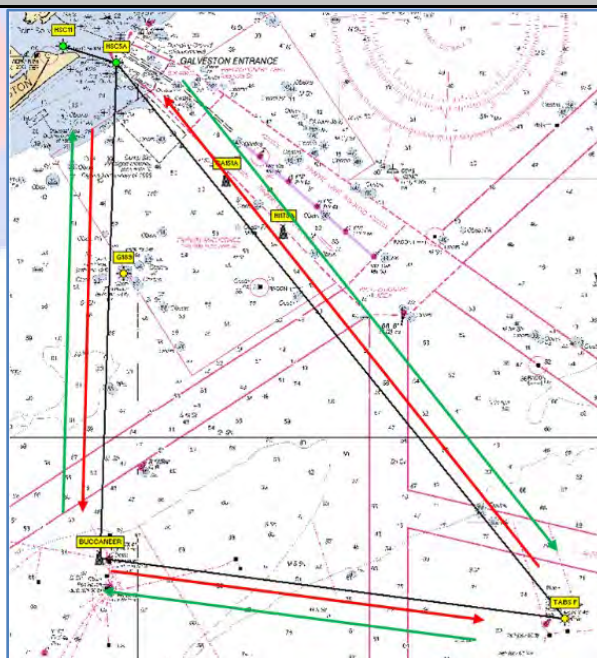
Offshore Mark Locations

Designation	Latitude	Longitude
HSC 11 (G "11" Fl G 2.5s)	29° 20.530'N	094° 44.470'W
HSC 5A (Iso G 6s 30ft 6M "5A" Ra Ref)	29° 19.642'N	094° 41.275'W
HI 179A (Platform)	29° 10.800'N	094° 31.260'W
Weather Buoy 42035	29° 12.900'N	094° 25.740'W
Buccaneer Rig	28° 53.648'N	094° 42.263'W
TABS B (Y "B" Y 4s Priv)	28° 58.939'N	094° 53.944'W
TABS F (Y "F" Y 4s Priv)	28° 50.550'N	094° 14.496'W

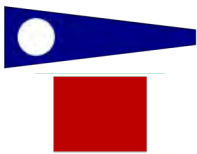
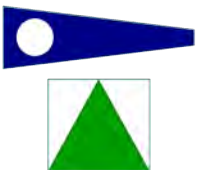
Attachment 2 Offshore Courses

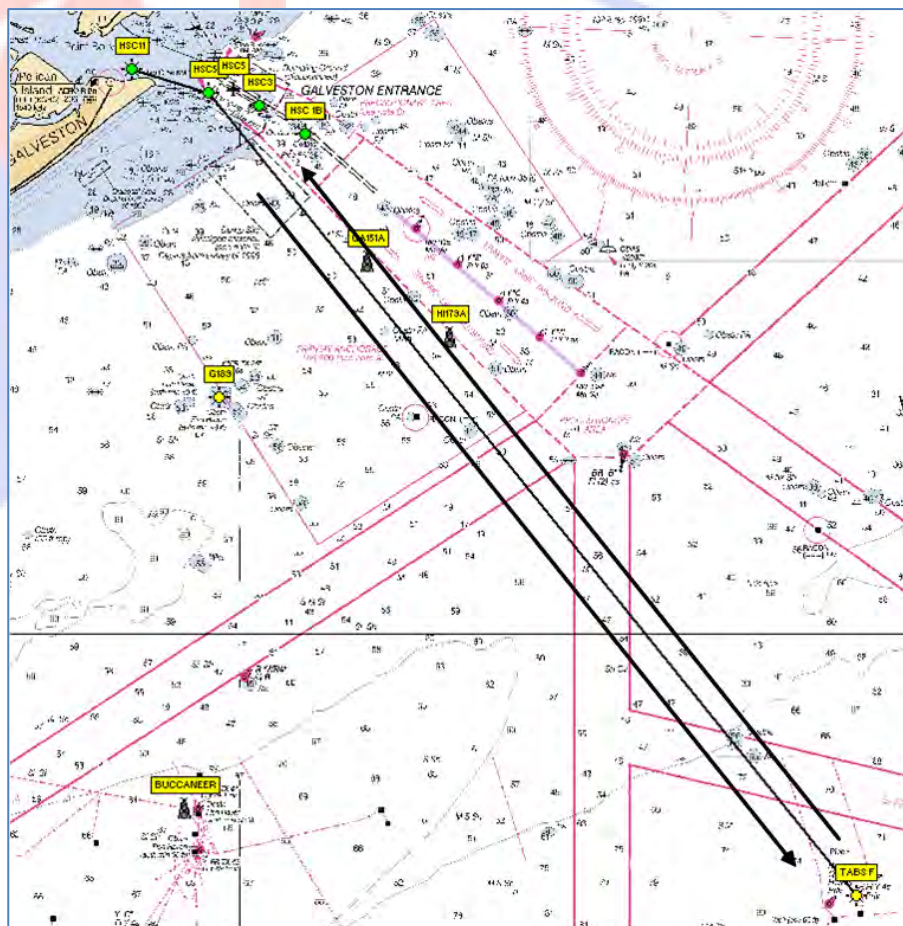
Course	"1 Red"			
				
	Leave to:	Bearing (Magnetic)	Leg distance(NM)	Accumulated distance(NM)
Start(HSC 11)	Port			
HSC 5A	Starboard	105	2.93	2.93
Buccaneer	Port	180	25.92	28.84
TABS F	Port	95	24.58	53.43
HSC 5A	Port	319	37.35	90.78
Finish (HSC 11)	Starboard	285	2.93	93.71

Course	"1 Green"			
				
	Leave to:	Bearing (Magnetic)	Leg distance(NM)	Accumulated distance(NM)
Start(HSC 11)	Port			
HSC 5A	Starboard	105	2.93	2.93
TABS F	Starboard	139	37.35	40.28
Buccaneer	Starboard	275	24.58	64.86
HSC 5A	Port	360	25.92	90.78
Finish (HSC 11)	Starboard	285	2.93	93.71



Attachment 2 Offshore Courses

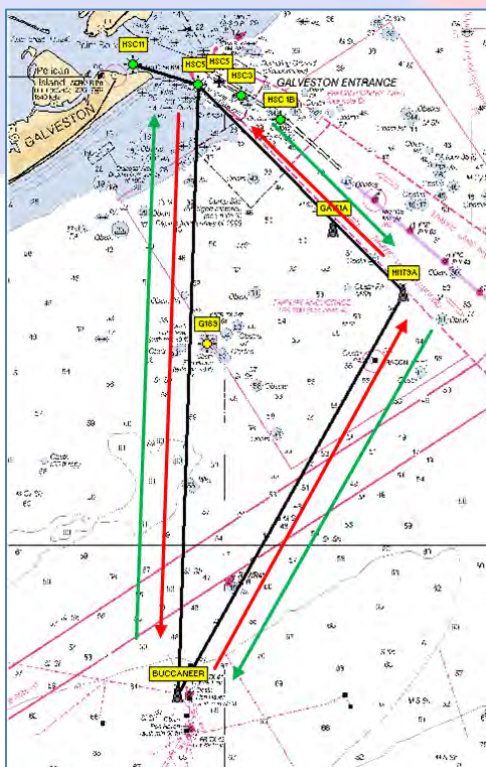
Course	"2 Red"	"2 Green"			
					
	Leave to:	Leave to:	Bearing (Magnetic)	Leg Distance(NM)	Total Distance(NM)
Start (HSC 11)	Port	Port	--	--	--
HSC 5A	Starboard	Starboard	105	2.93	2.93
TABS F	Port	Starboard	139	37.35	40.28
HSC 5A	Port	Port	319	37.35	77.63
Finish (HSC 11)	Starboard	Starboard	285	2.93	80.56





Attachment 2 Offshore Courses

Course	"3 Red"			
	Leave to:	Bearing(Magnetic)	Leg distance(NM)	Accumulated distance(NM)
Start (HSC 11)	Port			
HSC 5A	Starboard	105	2.93	2.93
Buccaneer	Port	180	25.92	28.85
HI 179A	Port	27	19.62	48.47
HSC 5A	Port	313	12.42	60.89
Finish (HSC 11)	Starboard	285	2.93	63.82

Course	"3 Green"			
	Leave to:	Bearing(Magnetic)	Leg distance(NM)	Accumulated distance(NM)
Start (HSC 11)	Port			
HSC 5A	Starboard	105	2.93	2.93
HI 179A	Starboard	139	12.42	15.35
Buccaneer	Starboard	276	19.62	34.97
HSC 5A	Port	360	25.92	60.89
Finish (HSC 11)	Starboard	285	2.93	63.82







Attachment 2 Offshore Courses

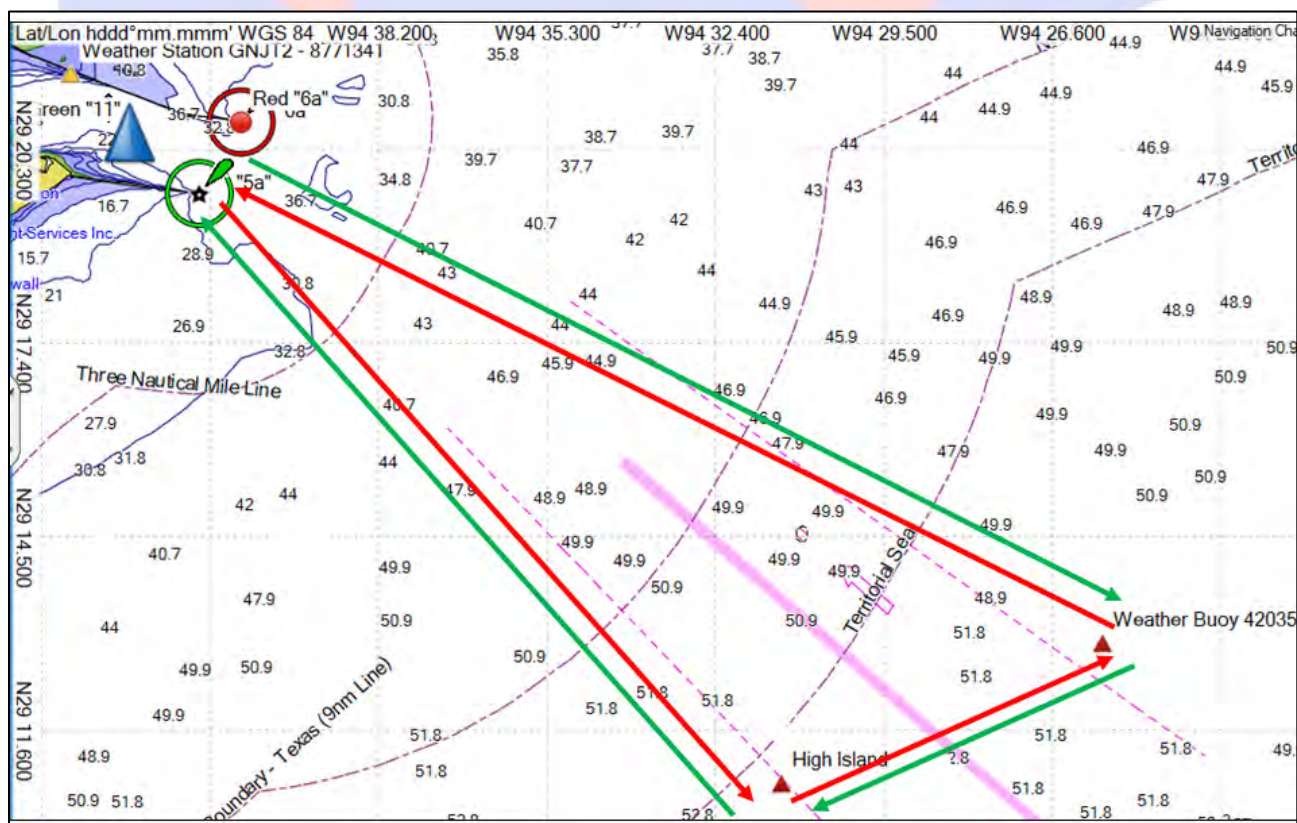
Course	"4 Red"	"4 Green"			
					
	Leave to:	Leave to:	Bearing (Magnetic)	Leg Distance(NM)	Total Distance(NM)
Start (HSC 11)	Port	Port	--	--	--
HSC 5A	Starboard	Starboard	105	2.93	2.93
Buccaneer	Port	Starboard	180	25.92	28.85
HSC 5A	Port	Port	360	25.92	54.77
Finish (HSC 11)	Starboard	Starboard	285	2.93	57.70



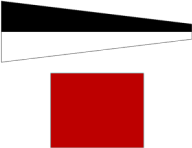
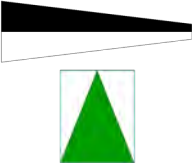
Attachment 2 Offshore Courses

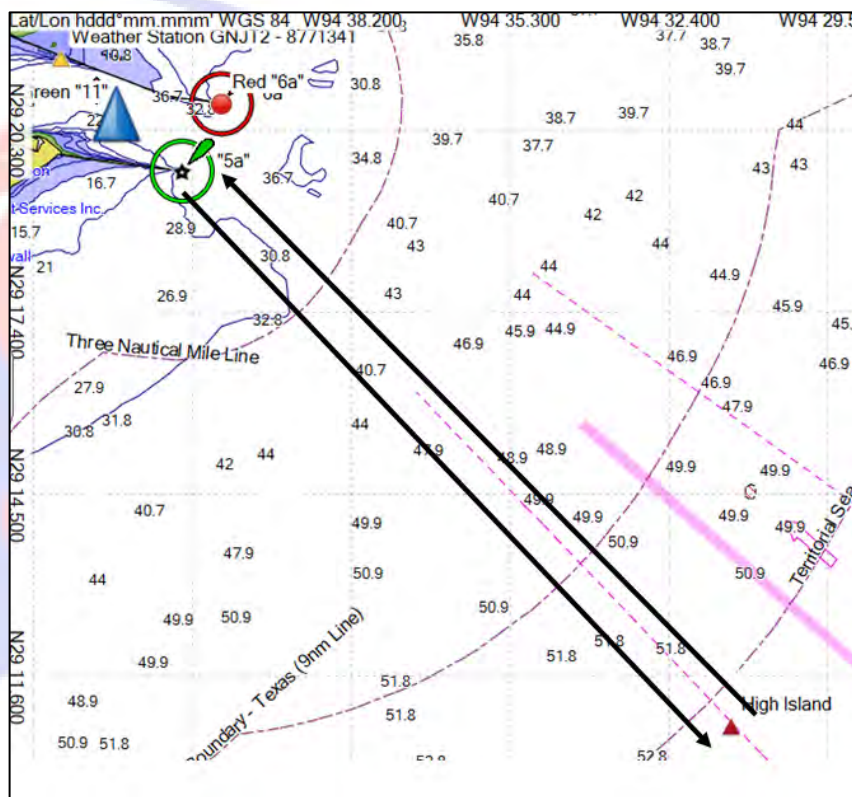
Course	“5 Red”			
	Leave to:	Bearing (Magnetic)	Leg distance(NM)	Accumulated distance(NM)
Start (HSC 11)	Port			
HSC 5A	Starboard	105	2.93	2.93
HI179A	Port	135	12.4	15.33
Buoy 42035	Starboard	65	5.4	20.73
HSC 5A	Port	295	15.4	36.13
Finish (HSC 11)	Starboard	285	2.93	39.06

Course	“5 Green”			
	Leave to:	Bearing (Magnetic)	Leg distance(NM)	Accumulated distance(NM)
Start (HSC 11)	Port			
HSC 5A	Starboard	105	2.93	2.93
Buoy 42035	Starboard	115	15.4	18.33
HI179A	Starboard	245	5.4	23.73
HSC 5A	Port	315	12.4	36.13
Finish (HSC 11)	Starboard	285	2.93	39.06





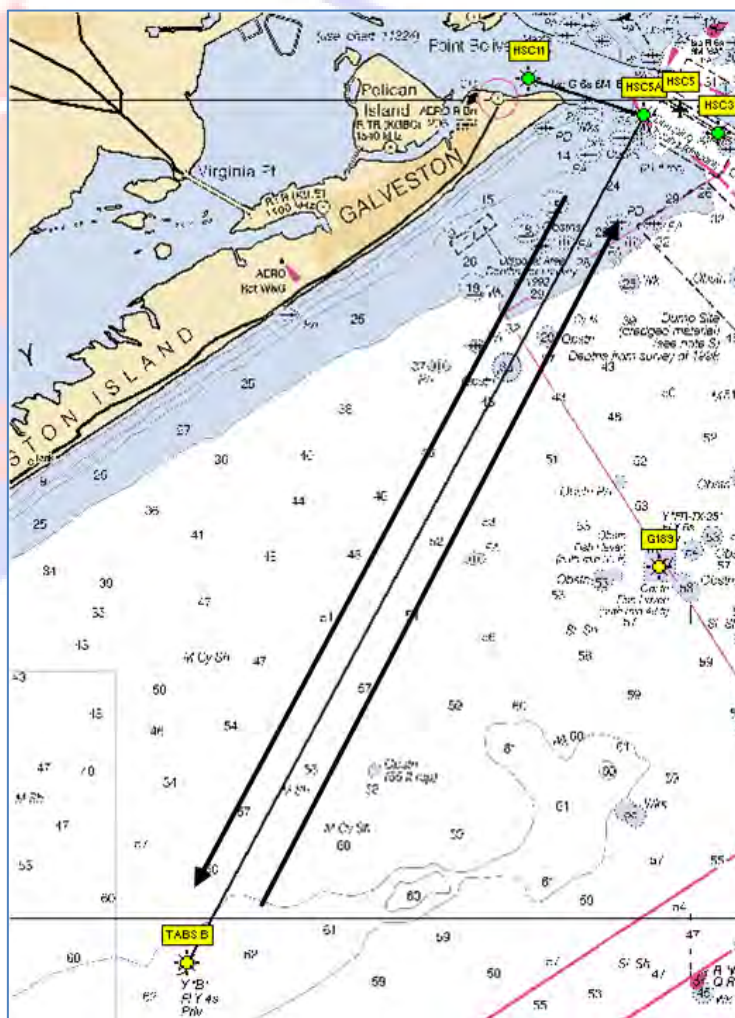
Attachment 2 Offshore Courses

Course	"6 Red"	"6 Green"			
					
	Leave to:	Leave to:	Bearing (Magnetic)	Leg Distance(NM)	Total Distance(NM)
Start (HSC 11)	Port	Port	--	--	--
HSC 5A	Starboard	Starboard	105	2.93	2.93
High Island	Port	Starboard	135	12.4	15.33
HSC 5A	Port	Port	315	12.4	27.33
Finish (HSC 11)	Starboard	Starboard	285	2.93	30.66



Attachment 2 Offshore Courses

Course	"7 Red"	"7 Green"			
					
	Leave to:	Leave to:	Bearing (Magnetic)	Leg Distance(NM)	Total Distance(NM)
Start (HSC 11)	Port	Port	--	--	--
HSC 5A	Starboard	Starboard	105	2.93	2.93
TABS B	Port	Starboard	206	23.46	26.39
HSC 5A	Port	Port	26	23.46	49.85
Finish (HSC11)	Starboard	Starboard	285	2.93	52.78



ATTACHMENT 3 –Photographic Images

Buccaneer Rig
Approx.
28° 53.648' N
094° 42.263' W

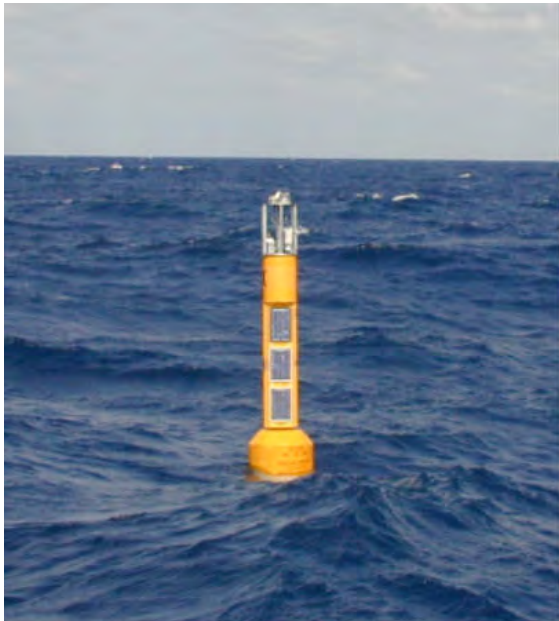


Photo courtesy Gulf Coast Composites, Inc.

ATTACHMENT 3 –Photographic Images

TABS B

https://www.ndbc.noaa.gov/station_page.php?station=42043



Flashing Yellow- 4 Second labeled "B"

TABS F

https://www.ndbc.noaa.gov/station_page.php?station=42050



Flashing Yellow 4 Second labeled "F"

Note: There is a Quick Flashing Red light ~1nm to WSW with a horn



Weather Buoy 42035

https://www.ndbc.noaa.gov/station_realtime.php?station=42035

High Island 179A KXIH

Photo not available

https://www.ndbc.noaa.gov/station_page.php?station=kxih



HEARING REQUEST

for **protests**, requests for
redress, and **reopening**

FOR COMMITTEE USE

Time & date received _____ Rec'd by _____
Protest time limit _____ Filing # _____

Race # Day/Date of Race

Event/Series

--	--	--

Type of Hearing

☐ Protest

☐ Redress

☐ Reopening

Boat or Committee Protesting or Requesting

Making allegation, claim, or request

Boat (sail # / name)

-OR- Committee

Represented by

Mobile

Email

Protestee(s) or Committee/Body

Alleged to have broken a rule, or made an improper action or omission

Boat (sail # / name)

Boat (sail # / name)

Boat (sail # / name)

Boat (sail # / name)

-OR- Committee/Body

For a protest only, informing the protestee How did you inform the other boat of your intent to protest?

If "Yes" when (for each)?

By hailing?

☐ No ☐ Yes

Words used?

By displaying a red flag?

☐ No ☐ Yes

Some other way?

☐ No ☐ Yes

Where / how?

The incident

For a protest: When and where did it happen? (e.g. 1/2 way along first upwind leg, pre-start just below pin, etc.)

For protests, please describe the incident. For redress or reopening, please state the reasons.

Rules alleged to have been broken

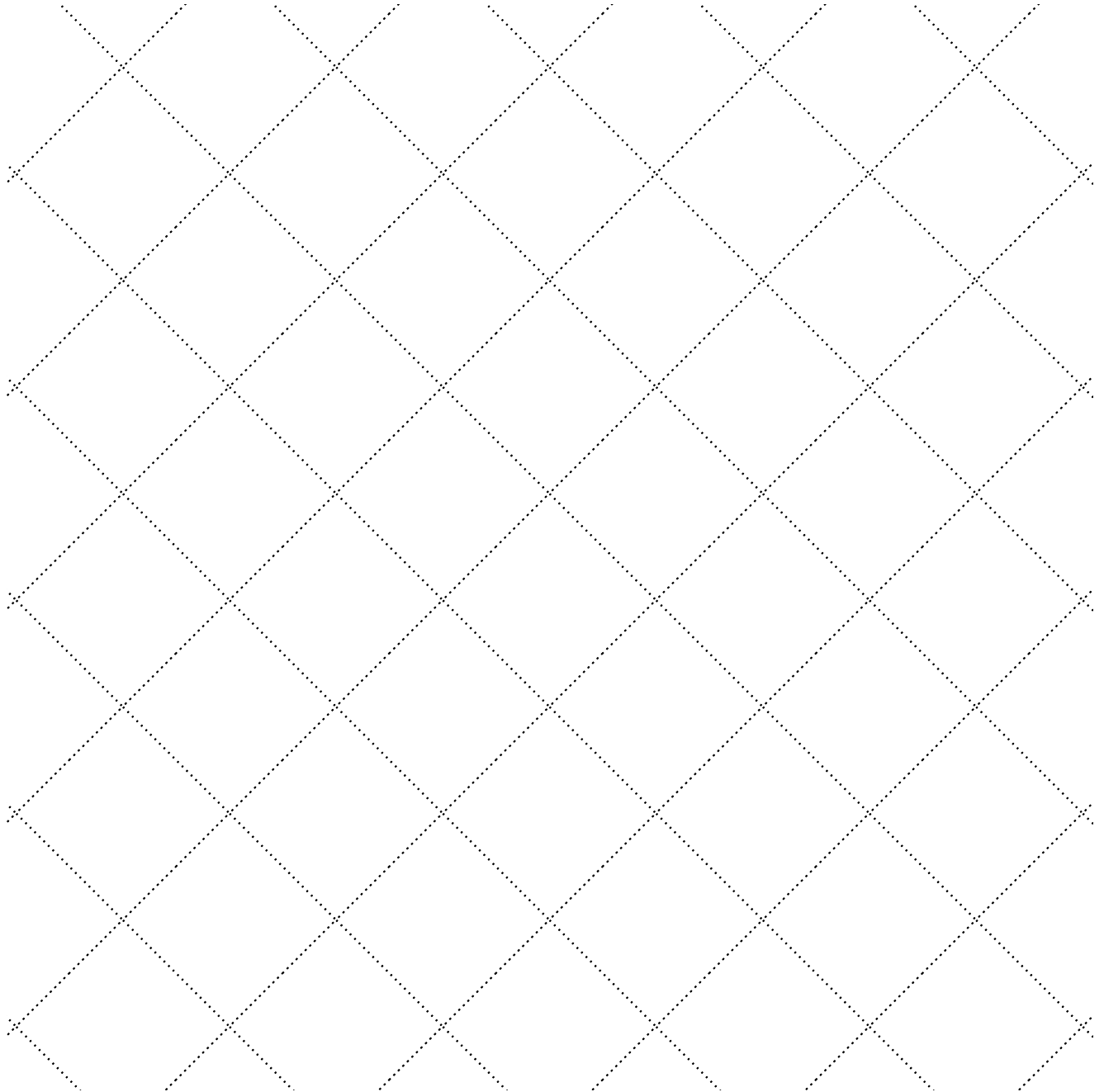


HEARING REQUEST

(continued)

For either a protest or a request for redress or reopening (if relevant)

Diagram Include wind and current (**or** continue the description of the incident and/or reasons)



Witnesses Please list by name

--

USE ONLY TO WITHDRAW FILING

I request to withdraw this filing

.....
Signature of representative

Print name

Filing withdrawal approved

.....
Signature of PC member

Print name