



## **2021 US Sailing Junior Olympic Sailing Regatta**

### **Rochester Yacht Club**

**July 31<sup>st</sup>-August 1<sup>st</sup>, 2021**

**Sailing Instructions: Club 420, Laser, Laser Radial, Optimist (Red, White, Blue)**

#### **1. RULES**

The regatta will be governed by the rules as defined by the Racing Rules of Sailing (RRS), the rules of the Club 420, Laser (ILCA-NA), and Optimist classes.

#### **2. NOTICES TO COMPETITORS**

Notices to competitors will be posted on the official notice board located on the river side of the Junior Sail Building.

#### **3. CHANGES IN SAILING INSTRUCTIONS**

Any change to the sailing instructions will be posted before 0800 on the day they take effect, except any change to the schedule of races will be posted by 2100 on the day before it will take effect.

#### **4. SIGNALS MADE ASHORE**

4.1. The diagrams Signals made ashore will be in accordance with Race Signals and displayed at the RYC Club House main flag pole, located in the North West corner of the property.

4.2. Flag "AP", with two horn signals (one horn signal when lowered) means, "The race is postponed, do not launch or leave the harbor while the AP flag is flying". The first warning signal will be made not less than 60 minutes after flag AP is lowered. This changes Race Signals.

#### **5. RACING AREA**

5.1. The 420 and Laser Fleets will race approximately 1 nm North West of the Harbor entrance as shown in Attachment A – Racing Area, attached.

5.2. The Optimist Red White and Blue Fleets will race approximately 1 nm East of the Harbor entrance as shown in Attachment A – Racing Area, attached.

5.3. All boats are reminded that the Genesee River is a restricted channel, and sailing vessels do NOT have right-of-way over vessels under power that may be restricted in their ability to maneuver. Participation in this regatta does NOT provide standing over vessels that have right-of-way.

## **6. SAFETY REGULATIONS**

- 6.1. CHECK-IN: Competitors must check in with the race committee signal boat before the warning signal of the first race each day. Competitors should sail past the PORT side of the race committee signal boat during the check in period
- 6.2. CHECK-OUT: A boat retiring from a race shall notify a race committee boat before leaving the course, or, when that is impossible, the Regatta Office immediately after arrival ashore.
- 6.3. The display of Code Flag “F” (white with red diamond) before the warning signal with one horn means “Spinnakers shall not be used for the race”.

## **7. THE COURSES**

- 7.1. Attachment B — Course Diagrams (attached) shows the courses, the order of rounding, and the side on which each mark is to be rounded or passed.
- 7.2. With or before the warning signal, the race committee signal boat will display the identifying number of the course (1 or 2) using a board or flag displaying that number

## **8. MARKS**

- 8.1. Marks may be red, green, orange, or yellow tetrahedrons or cylinders.
- 8.2. Mark “L” is a mark of the course only on downwind legs. The “Finish” mark is a mark of the course only when finishing.

## **9. THE START**

- 9.1. Races will be started in accordance with RRS Appendix U – Sound-Signal Starting System (3 minute sequence). This changes RRS 26.
- 9.2. The starting line will be between a staff displaying an orange flag on the race committee signal boat at the starboard end and the course side of the port-end starting mark.
- 9.3. For racing areas with multiple classes, starting order will be indicated using Class Flags, which are listed in Attachment B. The starting order may be different for each race. The warning signal for a succeeding class will be made at any time following the start signal for the preceding start.
- 9.4. Boats whose warning signal has not been made shall keep clear of the starting area and of all boats whose warning signal has been made.
- 9.5. The race committee intends to hail the sail numbers of OCS boats twice after the starting signal. Failure to hail a number, failure of a boat to hear such a hail, or the order in which boats are hailed will not be grounds for redress. This changes RRS 62.1(a)
- 9.6. A boat shall not start later than three minutes after her starting signal. Boats starting later than three minutes after their start will be scored DNS.

## **10. THE FINISH**

- 10.1. The finishing line will be between a staff displaying a blue flag on the race committee signal boat on the port end and the course side of the starboard end finishing mark.
- 10.2. If the Race Committee intends to start another race on the same day, it will display Code Flag "R" (Red flag with Yellow plus) with no sound while boats are finishing.
- 10.3. A boat intending to protest or request redress based on an incident in the racing area that she is involved in or sees shall, at the first reasonable opportunity after she *finishes*, but before consultation or discussing the incident with any coach, parent or non-competitor, inform the race committee at the finishing line of her intent to protest or request redress and, when applicable, the identity of the protestee.

## **11. TIME LIMIT**

- 11.1. The target time for each race is 60 minutes. Failure to meet the target time will not be grounds for granting redress. This changes RRS 60.1(b) and 62.1(a).
- 11.2. Boats failing to finish within 15 minutes after the first boat sails the course and finishes will be scored "TLE" Time Limit Expired without a hearing. This changes RRS 35, A4 and A5.
- 11.3. The Race Committee reserves the right to finish boats "in place" if doing so will prevent substantial delays in subsequent races.

## **12. HEARING REQUESTS (PROTESTS)**

- 12.1. The Protest Time Limit is 60 minutes after the time of the docking of the race committee signal boat for that competitor's course.
- 12.2. Hearing Requests shall be in writing, on a form available at the RYC Clubhouse Bar, and delivered to the regatta office (in the pavilion), within the protest time limit.
- 12.3. Hearing notices will be posted within 30 minutes after the protest time limit to inform competitors where and when there is a hearing in which they are parties to a hearing, or named as witnesses. This posting shall constitute the notification required by RRS 63.2 and RRS 61.1(b). Hearings will occur in approximately the order of receipt of requests.

## **13. SCORING**

- 13.1. Two (2) races are required to be completed to constitute a series.
- 13.2. When fewer than five (5) races have been completed, a boat's series score will be the total of her race scores. This changes RRS A2
- 13.3. When five (5) or more races have been completed, a boat's series score will be the total of her race scores excluding her worst score.

#### **14. PROHIBITED SUBSTANCES**

- 14.1. For Junior and Youth events or for junior or youth competitors in any US Sailing championship, no participant or competitor shall use, either on or off the water: marijuana or any other controlled substance (as defined in 21 U.S. Code 802) the possession of which is unlawful under 21 U.S. Code 841, or alcoholic beverages (distilled spirits, wine and beer, each as defined in chapter 51 of the U.S. Internal Revenue Code and intended for beverage use).
- 14.2. An alleged breach of one of these regulations shall not be grounds for a protest. However, when the protest committee believes that a competitor may have breached one of these regulations, it shall follow the process described in racing rule 69.1, and a competitor found to have breached one of these regulations shall be excluded from the remaining races of the series and, where practicable, removed from the regatta venue and sent home. The competitor's boat shall be disqualified from all races of the series.

#### **15. SUPPORT BOATS**

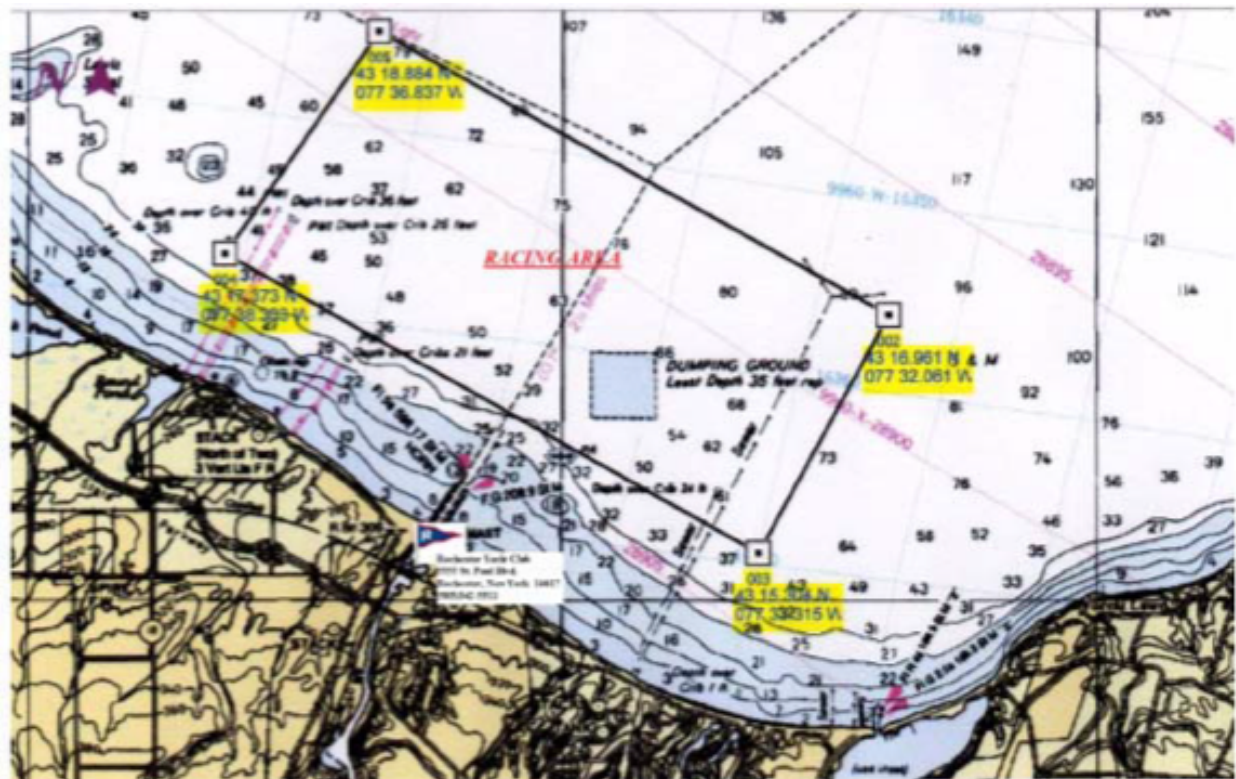
- 15.1. Team leaders, coaches and other support boats and personnel shall stay outside areas where boats are racing from the time of the preparatory signal until all boats have finished or retired or the race committee signal a postponement, general recall or abandonment, UNLESS directed by the race committee. The penalty for failing to comply with this requirement may result in disqualification of all boats associated with the support personnel who do so.
- 15.2. Coaches and other support personnel are strongly encouraged to wear fully secured PFDs while on the water.
- 15.3. All coach boats and other support boats/support personnel must agree to aid any competitor in distress or requesting assistance of any sort.

#### **16. DISPOSAL OF TRASH**

Boats observed purposefully discharging trash into the water will either be disqualified from all races the day the infraction is observed, be subject to other suitable disciplinary action, or both.

## ATTACHMENT A

### RACING AREA and HARBOR LOCATION



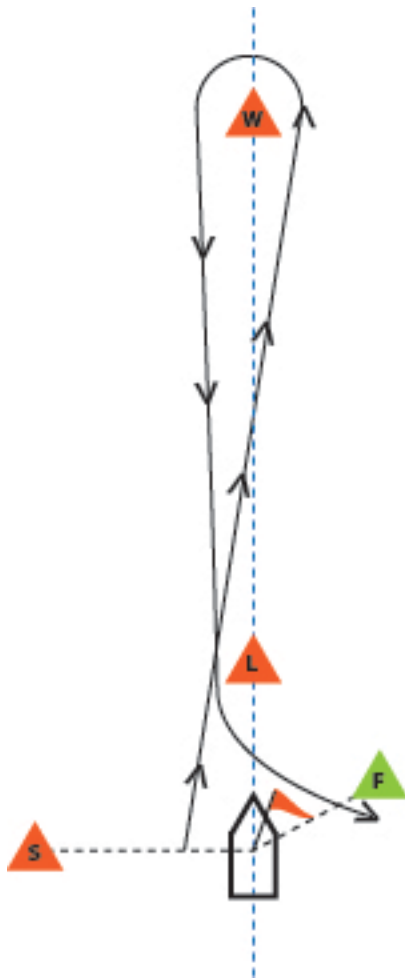
NOT TO BE USED FOR NAVIGATION

## ATTACHMENT B

### COURSE DIAGRAMS

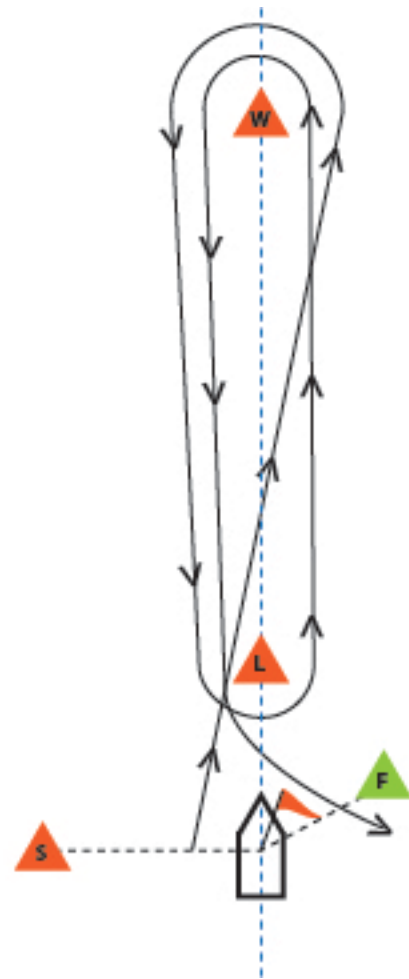
#### COURSE "1"

START -> W -> L -> F



#### COURSE "2"

START -> W -> L -> W -> L -> F



Rounding – All marks left to port.

#### Class Flags:

420: numeral pennant 2

All other classes: Numeral Pennant 1