



# 2021 GOVERNOR'S CUP

SATURDAY JUNE 12, 2021

HOSTED BY:

**VENTURA YACHT CLUB**

1755 SPINNAKER DRIVE  
VENTURA, CALIFORNIA 93001  
(805) 642-0426

[www.venturayachtclub.org](http://www.venturayachtclub.org)



## SAILING INSTRUCTIONS

### 1. RULES

This sailing event will be governed by, and all participants agree to accept and be bound by, *The Racing Rules of Sailing (RRS)*, the prescriptions of the United States Sailing Association, the rules of the Performance Handicap Racing Fleet, the Notice of Race (except as any of these are changed by these Sailing Instructions) and by these Sailing Instructions, which shall prevail in cases of conflict.

### 2. ENTRIES

- 2.1 The responsibility for a boat's decision to participate in a race or to continue racing is hers alone (**see RRS 3**).
- 2.2 Eligible boats may be entered by completing registration with the Ventura Yacht Club, including the payment of all required fees. **Competitors are encouraged to please register online prior to race day. Simply go online to [www.venturayachtclub.org](http://www.venturayachtclub.org) and follow the links (Water>Racing>Regatta Network). It's easy!**
- 2.3 Spinnaker, Non-spinnaker, and Multihull classes are planned, dependent upon entries. Class breaks will be determined at the skippers meeting. Yacht club affiliation and a valid PHRF rating certificate are required for PHRF Spinnaker and non-spinnaker class entries. PHRF membership is not required for Multihull class entries.

### 3. NOTICES TO COMPETITORS

Notices to competitors will be posted on the Racing Notice Board located in the lower patio of the Ventura Yacht Club.

### 4. CHANGES TO SAILING INSTRUCTIONS

- 4.1 Any change to the sailing instructions will be posted before 0945 hours on the day of race.
- 4.2 To indicate that a change to the sailing instructions has or will be posted, code flag "L" will be displayed from the club flagstaff before 0945 hours on the day it will take effect.

### 5. SCHEDULE OF RACES

The warning signal for the first class is scheduled for 1125 hours.

### 6. CLASSES

- 6.1 Classes will be announced at the Skipper's meeting.
- 6.2 Class flags:
  - Class A: red
  - Class B: green
  - Class C: purple
  - Class D: pink

## 7. THE COURSES

- 7.1 Courses will be selected from the attached 2021 VYC Coastal Course Chart.
- 7.2 Designation of the course to be sailed will be signaled from the Race Committee boat no later than the warning signal for the first starting class. For subsequent classes, their course will be displayed no later than the warning signal for their class.
- 7.3 When an oil platform is a mark of the course, its associated mooring buoy(s) will also be considered marks of the course. Such buoys are to be rounded on the same side as the oil platform is to be rounded (i.e., to port or to starboard).

## 8. TIME LIMIT

If any boat in a class finishes before sunset, the race is valid for that class. If no boat in a class finishes before sunset, the race is abandoned for that class and will not be re-sailed. Sunset on June 12, 2021 will be considered to be 2010 hours.

## 9. CHECK IN BEFORE THE START

Before the first warning signal, each boat is required to check in with the Race Committee signal boat on VHF Channel 69 by stating her sail number or by doing the same while sailing (on starboard) past the stern of the on-station RC signal boat. Check in is not accomplished until acknowledged by the RC.

## 10. THE START

- 10.1 Races will be started in accordance with **RRS** 26. The order of starts will be announced at the skipper's meeting.
- 10.2 The starting line will be located between the "Mandalay" mark as the port end mark, and an orange flag or shape mounted on the Committee Boat as the starboard end mark.
- 10.3 Boats whose preparatory signal has not been made shall keep clear of the starting area and of all boats whose preparatory signal has been made.
- 10.4 To draw attention that the race starting sequence is about to begin, several sound signals will be made approximately one minute before the warning signal for the first class.
- 10.5 There will be a one (1) minute period between the starting signal for a class and the warning signal for the next class.

## 11. RECALLS

- 11.1 Individual recalls will be signaled in accordance with **RRS** 29.1 [code flag "X" and 1 sound signal].
- 11.2 General recalls will be signaled in accordance with **RRS** 29.2 [code flag "First Substitute" and 2 sound signals]. When a general recall has been signaled, the starts for the succeeding classes will be postponed accordingly.
- 11.3 After the starting signal, the Race Committee may attempt to hail the sail number(s) of the recalled boat(s) on VHF Channel 69.
- 11.4 The following shall not be grounds for granting redress:
  - A) Failure of a boat to hear the recall hail or broadcast.
  - B) A boat's position in the sequence of hailed numbers or broadcast numbers.
  - C) Failure of the Race Committee to hail or broadcast numbers.

## 12. RETIREMENT

A boat that retires from a race after checking in is requested to notify the Race Committee before leaving the racing area or, if that is not possible, notify the Ventura Yacht Club as soon as possible. The Race Committee will monitor VHF Channel 69. The phone number for the Ventura Yacht Club is: (805) 642-0426. The phone/text number for VYC Race Chair Jim Dembowski is (805)256-0770.

### **13. CHECK IN DURING THE RACE**

- 13.1 All competitors racing after sunset (2011 hours) are requested to contact the RC at that time on VHF Channel 69 and provide approximate location and expected finish time.
- 13.2 All competitors are requested to notify the Race Committee when approximately 15 minutes from the finish. If the Race Committee is not on station, boats shall record their own finish times. The Race Committee will monitor VHF Channel 69 throughout the race.

### **14. THE FINISH**

- 14.1 The finish shall be on a line from the VYC balcony to the green light standard (#3) near the southern end of the detached breakwater.
- 14.2 Spinnakers are to be struck shortly after finishing in the harbor entrance.
- 14.3 If poor visibility conditions (fog, rain, etc.) exist when finishing at the Ventura Harbor entrance and/or when finishing after sunset, racers shall notify the RC when approximately ½ mile from the finish and shall record their own finish times when crossing the finish line. Boats shall record their own finish times by GPS time reference and report their finish to the race committee within 30 minutes after finishing.

### **15. PROTESTS**

Protests shall be written on forms available at the VYC office and shall be filed there with the Race Committee within 1 hour of the finish time of the protesting boat (or within 1 hour of her return to harbor if she retires).

### **16. SCORING**

- 16.1 PHRF ratings shall be used to score the relative performance of competing boats, in accord with Section 2.2 of the PHRF Class Rules:
- a. W/L Ratings are intended to be used when the course is expected to be primarily windward/leeward legs on courses set in relation to the wind.
  - b. RLC Ratings are intended to be used when the course type is neither W/L nor OWC.
  - c. OWC Ratings are intended to be used when at least 2/3 of the course distance is expected to be more than 135 degrees from true wind direction.
- 16.2 The Low Point Scoring System (Appendix A of the *RRS*) will apply.

### **17. ALTERNATIVE PENALTIES**

Reminder: The two-turns penalty, *RRS* 44.2, applies.

### **18. RADIO COMMUNICATION**

The Race Committee will monitor VHF Channel 69.

## 19. SAFETY

19.1 All boats must conform to USCG and US Sailing Safety Equipment Requirements (USSER) for a US Sailing Nearshore Race as modified below. [USSERs are available online at [ussailing.org](http://ussailing.org) (click on *Safety*)].

- USS SER 2.4.4 is in effect for this race and modified to require lifelines even if they are not uncoated stainless steel.
- USS SER 3.19.1 is modified to allow compasses such as the TACK TICK and Velocitek Shift (non GPS) magnetic compasses with mounted brackets as long as they are tethered so the device may not be lost overboard.
- USS SER Rule 3.8.2 is in effect for this race and modified to require a waterproof VHF or a VHF with a waterproof cover even if it does not have DSC/GPS capability.
- USS SER 3.3.1 is modified to allow running lights that are mounted below deck level (common on 90's and earlier boats).

19.2 There shall be a **minimum of two (2) persons aboard any competing boat.**

19.3 Competitors are reminded that they are bound by the International Regulations for Preventing Collisions at Sea when encountering vessels that are not racing.

## 19 INSURANCE:

Each participating boat must be insured with valid third-party liability insurance that provides a minimum coverage of \$300,000.00 per incident.

## 21. NON-SPINNAKER CLASS DEFINITIONS

21.1 No spinnakers or spinnaker-like sails such as flashers, cruising 'chutes, MPSs, gennakers, etc. are allowed. All headsails must meet the measurements of RRS 50.4.

21.2 Only one spinnaker pole or whisker pole may be used at one time and, when in use, shall be attached to the foremost mast.

21.3 Use of headsails larger than 155% LP carries a 6 second per mile penalty unless the boat is already handicapped for such larger sail.

21.4 More than one headsail may be carried set, and the headsails need not be attached to the forestay.

## 23. AWARDS

Individual "take-home" awards will be presented after racing at Ventura Yacht Club. The perpetual trophy will be awarded with winners' names inscribed at the Annual Awards Dinner at Ventura Yacht Club in January, 2022. The perpetual trophy shall remain at Ventura Yacht Club.

Number of boats in class	Awards given
2-3	1st place
4-6	1st and 2nd place
7 or more	1st, 2nd and 3rd place

## 24. DISCLAIMER OF LIABILITY:

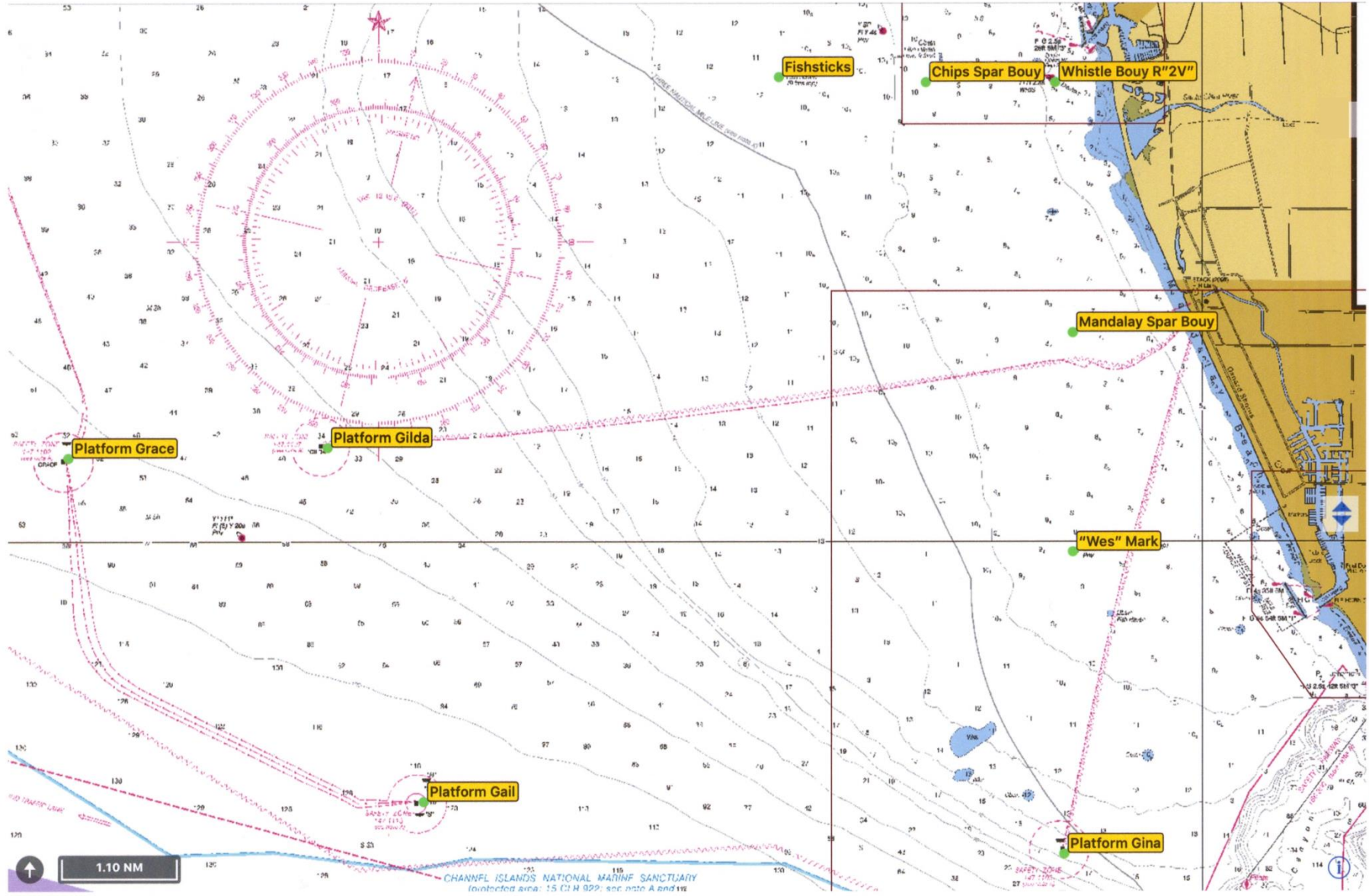
Competitors in this event are participating entirely at their own risk. See **RRS 3**, Decision to Race. The race organizers (organizing authority, race committee, protest committee, host club, sponsors, or any other organization or official) will not be responsible for damage to any boat or other property or the injury to any competitor, including death, sustained as a result of participation in this event. By participating in this event, each competitor agrees to release the race organizers from any and all liability associated with such competitor's participation in this event to the fullest extent permitted by law.



# 2020 VYC Coastal Course Chart



Chartlet taken from NOAA 18725\_1 Port Hueneme To Santa Barbara Not to be used for Navigation



Course 1 - 8 use an inflatable mark

#	Course	Approx. Heading	M start	R2 start
1	S Tp Mp R2s F	Posted on R/C	3.9	
2	S Tp Ms R2s F		3.9	
3	S Tp Mp As F		7.66	
4	S Tp Ms As F		7.66	
5	S Tp Mp R2p Cp F		6.28	
6	S Tp Ms R2p Cp F		6.28	
7	S Tp Mp R2p Ap F		8.98	
8	S Tp Ms R2p Ap F		8.98	
9	S Ws R2s Ms R2s F	164	11.98	14.46
19	S Ws G1s R2s F	164	18.72	21.20
11	S Ws Mp G2s F	164	19.97	22.45
12	S Ws G4s F	164	22.44	24.92
13	S Ws R2s F	165	7.02	9.50
14	S Ws As F	165	10.32	12.80
15	S G3s As F	165	15.86	18.34
16	S G3s R2s F	167	12.87	15.35
17	S G3s Ws G3s R2s F	167	18.73	21.21
18	S G3s Cp Ap R2p Ap F	167	21.92	24.40
19	S G3s Ms G3s R2s F	167	22.84	25.32
20	S G3s G1s R2p Ap F	167	26.32	28.80
21	S G3s R2s G3s R2s F	167	27.80	30.28
22	S G1s R2s F	220	17.65	19.18
23	S G1s Cp Ap F	220	20.79	22.32
24	S G1s As Cs As F	220	21.34	22.87
25	S G1s R2p Ap F	220	22.73	24.26
26	S G1p G3p G1s R2s F	220	30.45	31.89
27	S G2s Mp R2s F	247	17.87	18.44
28	S G2s Cp Ap F	247	18.79	19.36
29	S G2s R2p Ap F	247	20.95	21.52
30	S G4s F	249	20.40	20.79
31	S G4s Cp Ap F	249	23.32	23.71
32	S G4s G2s G4s F	249	25.72	26.11
33	S G2s F	250	15.85	16.42
34	S Ap G4p F	298	22.16	21.00
35	S Ap Ms G2s F	298	23.35	22.19
36	S Ap Ms G4s F	298	27.90	26.74
37	S Ap G3s G4s F	298	32.81	31.65
38	S As F	300	6.66	5.50
39	S As R2p Cp F	300	9.14	7.98
40	S As Mp R2s F	300	10.40	9.24
41	S As R2p As F	300	11.84	10.68
42	S As Wp R2s F	300	14.06	12.90
43	S As Mp R2p As F	300	15.48	14.32
44	S R2p G2p F	341	18.90	N/A
45	S SCp R2s F	225	34.9	
46	S PRp R2s F	233	47.6	
47	S FRYs F			

MARKS		APPROXIMATE LOCATION	
<b>A</b>	Fish Sticks spar buoy	L: 34° 14.45'N	Lo: 119° 19.86'W
<b>W</b>	"Wes" Mark	L: 34° 09.9'N	Lo: 119° 16.5'W
<b>C</b>	Chips spar buoy	L: 34° 14.4'N	Lo: 119° 18.2'W
<b>M</b>	Mandalay spar buoy	L: 34° 12.0'N	Lo: 119° 16.5'W
<b>R2</b>	Whistle buoy R"2V"	L: 34° 14.4'N	Lo: 119° 16.7'W
<b>F</b>	Finish at Ventura Harbor		
<b>G1</b>	Platform Gail	L: 34° 07.5'N	Lo: 119° 24.0'W
<b>G2</b>	Platform Gilda	L: 34° 10.9'N	Lo: 119° 25.1'W
<b>G3</b>	Platform Gina	L: 34° 07.0'N	Lo: 119° 16.6'W
<b>G4</b>	Platform Grace	L: 34° 10.8'N	Lo: 119° 28.1'W
<b>SC</b>	SCorpion Anch buoys (2)	L: 34° 02.98'N	Lo: 119° 33.32'W
<b>PR</b>	PRisoners Hbr buoy	L: 34° 01.25'N	Lo: 119° 41.12'W
<b>T</b>	Inflatable Buoy	.05 miles from M mark	