

HURRICANE CUP PURSUIT RACE
SEPTEMBER 25, 2021
SAILING INSTRUCTIONS

1. RULES

1.1 The event is governed by the rules defined in The Racing Rules of Sailing (RRS), except as changed by the Notice of Race or by these Sailing Instructions.

1.2 RRS 52 is changed as follows: Competitors are permitted to use electrically-powered winches for running rigging while racing.

2. CHANGES TO SAILING INSTRUCTIONS

2.1 Any changes to the sailing instructions or schedule will be posted, at least 24 hours prior to the first scheduled warning signal, on the Regatta Network [Hurricane Race Notice Board](#)

2.2 Changes to the sailing instructions, excluding the schedule of races, may be made on the water by the race committee on the boat prior to the warning signal and after displaying signal flag “L” and a radio announcement by the race committee on VHF CH 72.

3. COMMUNICATIONS WITH COMPETITORS

3.1 Notices to competitors will be posted on the Regatta Network [Hurricane Race Notice Board](#)

3.2 Scratch sheets including start times will be available through the registrant’s email, no later than 0900 on the day of the race.

3.3 On the water, the race committee intends to monitor and communicate with competitors on VHF CH 72

4. CODE OF CONDUCT

4.1 [DP]Competitors and support persons shall comply with reasonable requests from the race officials.

5. SIGNALS MADE ASHORE

5.1 Signals made ashore will be displayed from the BYC flagpole.

5.2 When flag AP is displayed ashore, ‘1 minute’ is replaced with ‘not less than 60 minutes’ in Race Signals AP.

6. SCHEDULE OF RACE

6.1 The scheduled time of the first warning signal is 1155.

7. RACING AREA

7.1 The racing area will include the area of Buzzards Bay as detailed in the attached 2021 Race Chart.

8. COURSES

8.1 The courses will be as described on the scratch sheet and displayed on the committee boat.

9. MARKS

9.1 A chart of possible marks and their descriptions is attached.

10. START AND RECALLS

10.1 The start will be in the vicinity of Sippican Harbor Lighted Red Buoy "2" (F1 R) at Centerboard Shoal (BYC mark "G"). The finish will be at Sippican Harbor Lighted Red Buoy "2" (F1 R) at Centerboard Shoal (BYC mark "G").

10.2 Boats will be allocated a start from 12:00:00 relative to their handicap and those times will be listed on the scratch sheet.

10.3 The first boat(s) to start will be allocated 12:00:00 and will start in accordance with RRS 26.

10.4 For subsequent boats, their preparatory signal and their one-minute signal shall be deemed to have been made at four minutes and at one minute respectively before their nominal starting time. Their starting signal will be the start time announced with a single sound. This changes RRS26.

10.5 Boats whose warning signal has not been made shall avoid the starting area during the starting sequence for other boats.

10.6 Postponing Pursuit Races

10.6.1 Postponement of pursuit races shall be in accordance with RRS 27.3.

10.6.2 In the event of postponement, the starting minutes allocated will remain the same. Yachts will start at their allocated number of minutes after the rescheduled start time. The start sheet will not be reprinted. Yachts will be advised of the rescheduled start time via VHF CH 72.

10.7 Individual recalls

10.7.1 When at a boat's starting signal any part of her hull is on the course side of the starting line, the race committee shall promptly display code flag 'X' accompanied by one sound signal. The flag will be displayed for the earlier of a period of 30 seconds or until all such boats have completely returned to the prestart side of the line by rounding one of the ends. A 10% elapsed time penalty shall apply to boats that fail to start correctly. This changes RRS 29.1.

10.7.2 The race committee will attempt to notify any premature starters on VHF CH 72. The failure of the Race Committee to make such a call or the failure of the starter to hear it shall not be grounds for redress.

10.8 General recalls

10.8.1 There shall be no general recalls. This changes RRS 29.2

10.9 A boat that does not start within 10 minutes after her starting signal will be scored Did Not Start without a hearing. This changes RRS A5.1 and A5.2.

10.10 Redress will not be available for a boat penalized under 10.7, 10.8, or 10.9.

11. FINISHING

11.1 The finish line will be between the staff from which a blue flag is displayed on the signal boat and the course side of the nearby mark.

11.2 If the race committee is absent when a boat finishes, the navigator of the finishing boat shall record her finishing time (GPS time) when her mast is abeam of and within 25 feet of the final mark of the course. This time shall be sent via text message to the scorer as soon as possible. (The Scorer's contact information will be provided via the registrant's email after registration.)

12. PENALTIES

12.1 RRS Appendix V will apply. This alters RRS 44.1

13. TIME LIMITS

13.1 The Hurricane Cup PHRF Pursuit Race has a time limit of 5 hours

14. PROTESTS AND REQUESTS FOR REDRESS

14.1 Protests and requests for redress shall be written on forms available on the BYC Racing webpage and in an envelope on the bar on the porch at BYC. Completed protests should be emailed (or photographed and emailed) to protest@beverlyyachtclub.org within two hours from the time when the race committee boat docks or when the boat finishes whichever is later.

14.2 Notices will be posted and emailed no later than 2100 on September 25, 2021 to inform competitors of hearings in which they are parties or named as witnesses and the time and location of that hearing.

14.3 A boat requesting redress based on her scores shall do so by 1100 on September 26. This changes RRS 62.2.

15. SCORING

15.1 Boats will be scored according to RRS Appendix A.

15.2 Scores will be posted on the Hurricane Cup site on Regatta Network [Hurricane Cup Pursuit Race](#)

16. SAFETY

16.1 When Flag L is displayed on the race committee signal boat before a warning signal, boats shall check in by sailing past the signal boat on starboard tack and hailing their numbers until acknowledged by the race committee.

16.2 Every competing boat is required to carry a VHF radio and monitor VHF radio CH 72 from the preparatory signal and while racing.

16.3 A boat that retires shall notify the race committee, or by calling the BYC (508-748-0540), at the first reasonable opportunity.

16.4 All competitors shall wear properly fastened, USCG approved personal flotation devices at all times when on deck. This changes RRS 40.1

17. RISK STATEMENT

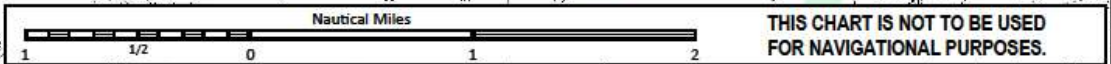
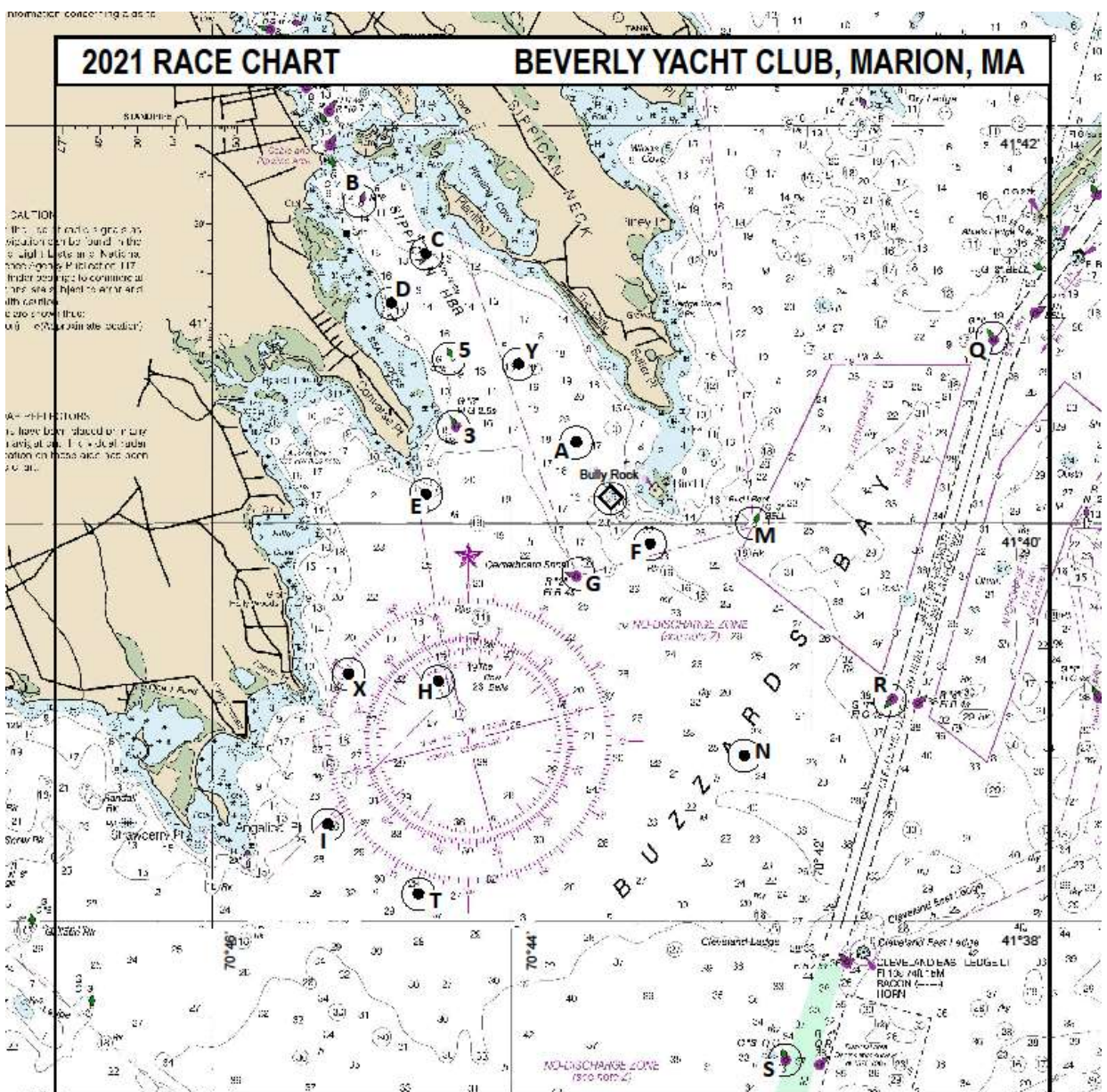
17.1 RRS 3 states: 'The responsibility for a boat's decision to participate in a race or to continue racing is hers alone.' By participating in this event each competitor agrees and acknowledges that sailing is a potentially dangerous activity with inherent risks. These risks include strong winds and rough seas, sudden changes in weather, failure of equipment, boat handling errors, poor seamanship by other boats, loss of balance on an unstable platform and fatigue resulting in increased risk of injury. **Inherent in the sport of sailing is the risk of permanent, catastrophic injury or death by drowning, trauma, hypothermia or other causes.**

2021 RACE CHART

BEVERLY YACHT CLUB, MARION, MA

CAUTION
 This chart is not to be used for navigational purposes. It is intended for use as a reference only. The chart is not to be used for navigational purposes. It is intended for use as a reference only.

WARNING
 This chart is not to be used for navigational purposes. It is intended for use as a reference only. The chart is not to be used for navigational purposes. It is intended for use as a reference only.



Except when indicated as turning marks, all yachts must pass East of Marks "3", "5" and "E", and pass South of marks "F" and "I".

- - USCG Aid To Navigation
- - BYC Private Mark
- ⊙ - BYC Private Rock Marker

MARK	DESCRIPTION	MARK	DESCRIPTION
3	Sippican Harbor Lighted Green Buoy "3" (FI G 2.5s) East of Converse Point	O	Portable Offset Turning Mark near Windward Turning Mark
5	Sippican Harbor Green Can "5" East of Seal Rocks	P	Portable Alternate Finish Line Pin directly on the opposite side of start boat from starting line pin
A	BYC Yellow Can "A" West of Butler Point	Q	Hog Island Channel lighted Green Buoy "1" (Q FI G) Southwest of Abiels Ledge
B	Sippican Harbor Red Nun "6" South of Ram Island	R	Cleveland Ledge Channel Lighted Green Gong "7" (FI G 4s) Northeast of Cleveland Light
C	BYC Yellow Can "C" West of Planting Island	S	Cleveland Ledge Channel Lighted Green Buoy "3" (Q FI G) Southwest of Cleveland Light
D	BYC Yellow Can "D" Northeast of Seal Rocks	T	BYC Yellow Can "T" Southeast of Angelica Point
E	BYC Yellow Can "E" Southeast of Converse Point	U	Portable Pin end of Start / Finish Line to Port of Signal Boat
F	BYC Yellow Can "F" South of Bird Island	V	Portable Turning Mark a Short Distance to Windward of Start / Finish
G	Sippican Harbor Lighted Red Buoy "2" (FI R 4s) at Centerboard Shoal Southwest of Bird Island	W	Portable Windward Turning Mark at Bearing and Distance Posted on signal boat
H	BYC Yellow Can "H" at The Bow Bells East of Point Connett	X	BYC Yellow Can "X" East of Peases Point
I	BYC Yellow Can "I" East of Angelica Point	Y	BYC Yellow Can "Y" Southwest of The Cliffs
J	Portable Turning Mark to Leeward of Start / Finish Line	Z	Buzzards Bay Lighted Red Gong "10" (FI R) Southeast of West Island (off chart)
K	West Island Red Bell "2SE" (off chart)		
L	Weepecket Rock Lighted Red Gong "8" (FI R) (off chart)		
M	Bird Island Green Bell "3" Southeast of Bird Island		
N	BYC Yellow Can "N" Southeast of Bird Island		