

# VAN RENSSELAER MEMORIAL TROPHY PURSUIT RACE

JUNE 27, 2021

## SAILING INSTRUCTIONS

**Amended June 21, 2021**

### 1. RULES

1.1 The event is governed by the rules defined in The Racing Rules of Sailing (RRS), except as changed by the Notice of Race or by these Sailing Instructions.

1.2 RRS 52 is changed as follows: Competitors are permitted to use electrically-powered winches for running rigging while racing.

### 2. CHANGES TO SAILING INSTRUCTIONS

2.1 Any changes to the sailing instructions or schedule will be posted, at least 24 hours prior to the first scheduled warning signal, on the Official Notice Board located at [Regatta Network](#)

2.2 Changes to the sailing instructions, excluding the schedule of races, may be made on the water by the race committee on the boat prior to the warning signal and after displaying signal flag "L" and a radio announcement by the race committee on VHF CH 72.

### 3. COMMUNICATIONS WITH COMPETITORS

3.1 Notices to competitors will be posted on the Official Notice Board located at [Regatta Network](#).

3.2 Scratch sheets including start times will be available through the registrant's email, no later than 0900 on the day of the race.

3.3 On the water, the race committee intends to monitor and communicate with competitors on VHF CH 72

### 4. CODE OF CONDUCT

4.1 [DP]Competitors and support persons shall comply with reasonable requests from the race officials.

### 5. SIGNALS MADE ASHORE

5.1 Signals made ashore will be displayed from the BYC flagpole.

5.2 When flag AP is displayed ashore, '1 minute' is replaced with 'not less than 60 minutes' in Race Signals AP.

### 6. SCHEDULE OF RACE

6.1 The scheduled time of the first warning signal is 1155.

### 7. RACING AREA

7.1 The racing area will include Buzzards Bay.

### 8. COURSES

8.1 The courses will be as described on the scratch sheet and displayed on the committee boat.

### 9. MARKS

9.1 A chart of possible marks and their descriptions is attached.

## **10. START AND RECALLS**

**10.1** The start will be in the vicinity of Sippican Harbor Lighted Red Buoy "2" (F1 R) at Centerboard Shoal (BYC mark "G"). The finish will be at Sippican Harbor Lighted Red Buoy "2" (F1 R) at Centerboard Shoal (BYC mark "G").

**10.2** Boats will be allocated a start from 12:00:00 relative to their handicap and those times will be listed on the scratch sheet.

**10.3** The first boat(s) to start will be allocated 12:00:00 and will start in accordance with RRS 26.

**10.4** For subsequent boats, their preparatory signal and their one-minute signal shall be deemed to have been made at four minutes and at one minute respectively before their nominal starting time. Their starting signal will be the start time announced with a single sound. This changes RRS26.

**10.5** Boats whose warning signal has not been made shall avoid the starting area during the starting sequence for other boats.

### **10.6 Postponing Pursuit Races**

**10.6.1** Postponement of pursuit races shall be in accordance with RRS 27.3.

**10.6.2** In the event of postponement, the starting minutes allocated will remain the same. Yachts will start at their allocated number of minutes after the rescheduled start time. The start sheet will not be reprinted. Yachts will be advised of the rescheduled start time via VHF CH 72.

### **10.7 Individual recalls**

**10.7.1** Boats starting early by one minute or more shall have that amount of time, which they would otherwise have saved, added to their elapsed time and then a further 10% time penalty added. No recall signal shall be made. This changes RRS 29.1.

**10.7.2** Boats starting early by less than one minute: The race committee shall promptly display code flag 'X' accompanied by one sound signal. The flag will be displayed for a period of 30 seconds or until all such boats have completely returned to the prestart side of the line by rounding one of the ends, whichever is earlier. A 10% elapsed time penalty shall apply to boats that fail to start correctly. This changes RRS 29.1.

### **10.8 General recalls**

**10.8.1** There shall be no general recalls. This changes RRS 29.2

**10.9** A boat that does not start within 10 minutes after her starting signal will be scored Did Not Start without a hearing. This changes RRS A5.1 and A5.2.

## **11. FINISHING**

**11.1** The finish line will be between the staff from which a blue flag is displayed on the signal boat and the course side of the nearby mark.

## **12. PENALTIES**

**12.1** RRS Appendix V will apply. This alters RRS 44.1

### 13. TIME LIMITS

13.1 The Van Rensselaer Memorial Trophy PHRF Pursuit Race has a time limit of 5 hours.

### 14. PROTESTS AND REQUESTS FOR REDRESS

14.1 Requests for hearings for protests or redress shall be written on forms available on the BYC Racing webpage and at the bar at BYC. Completed protests should be emailed (or photographed and emailed) to <mailto:protest@beverlyyachtclub.org> within two hours from the time when the race committee boat docks.

14.2 Notices will be posted and emailed no later than 1800 on June 27, 2021 to inform competitors of hearings in which they are parties or named as witnesses and the time and location of that hearing.

14.3 A boat requesting redress based on her scores shall do so by 1100 on June 28, 2021. This changes RRS 62.2.

### 15. SCORING

15.1 Boats will be scored according to RRS Appendix A.

15.2 Scores will be posted on the Van Rensselaer PHRF Pursuit Race site on [Regatta Network](#)

### 16. SAFETY

16.1 When Flag L is displayed on the race committee signal boat before a warning signal, boats shall check in by sailing past the signal boat on starboard tack and hailing their numbers until acknowledged by the race committee.

16.2 Every competing boat is required to carry a VHF radio and monitor VHF radio CH 72 from the preparatory signal and while racing.

16.3 A boat that retires shall notify the race committee, or by calling the BYC (508-748-0540), at the first reasonable opportunity.

16.4 All competitors shall wear properly fastened, USCG approved personal flotation devices at all other times when on deck. This changes RRS 40.1

16.5 When flag V (Red X on White Background) is displayed not later than the warning signal spinnakers shall not be used.

### 17. RISK STATEMENT

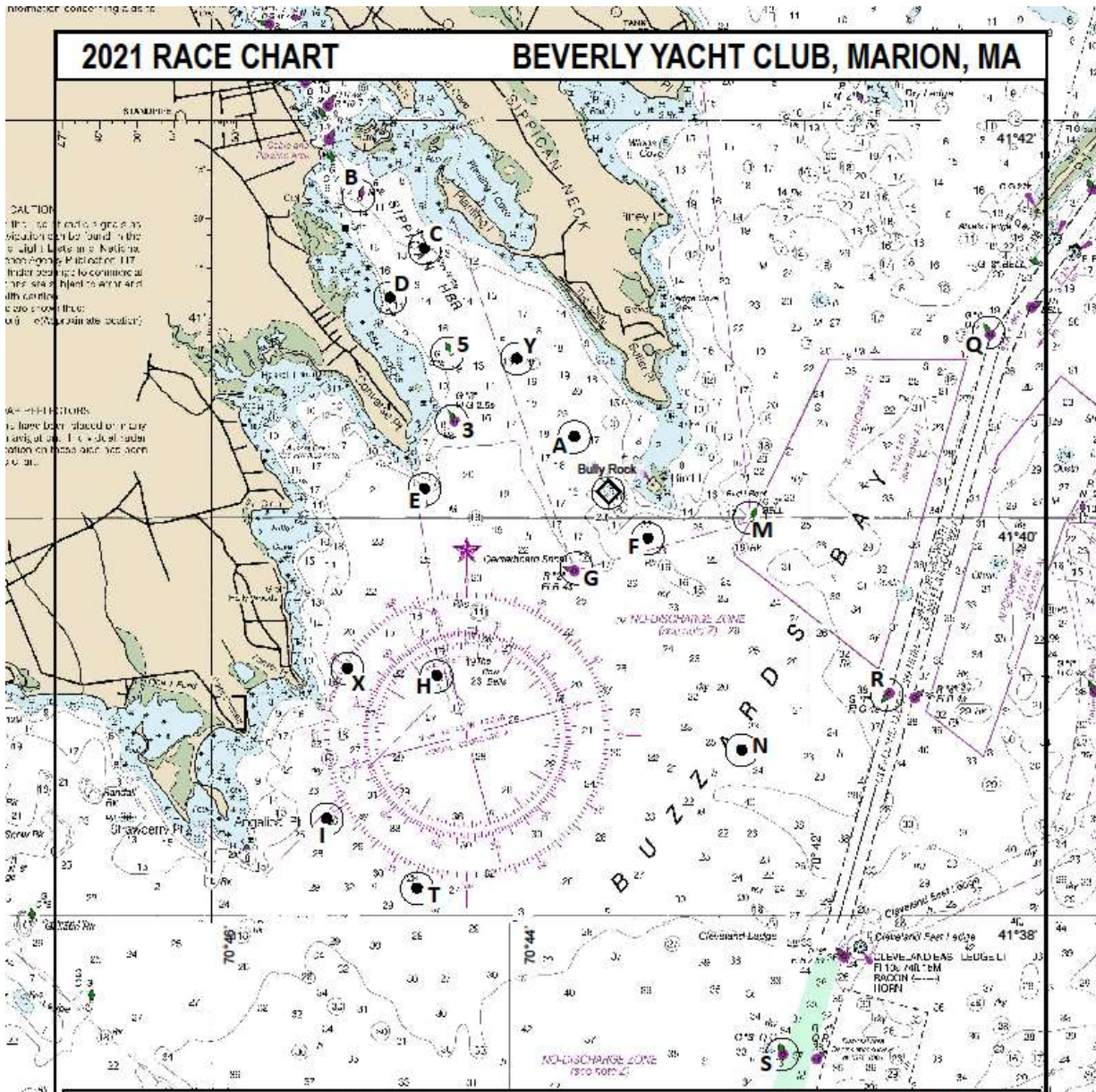
17.1 RRS 3 states: 'The responsibility for a boat's decision to participate in a race or to continue to race is hers alone.' By participating in this event each competitor agrees and acknowledges that sailing is a potentially dangerous activity with inherent risks. These risks include strong winds and rough seas, sudden changes in weather, failure of equipment, boat handling errors, poor seamanship by other boats, loss of balance on an unstable platform and fatigue resulting in increased risk of injury. **Inherent in the sport of sailing is the risk of permanent, catastrophic injury or death by drowning, trauma, hypothermia or other causes.**

# 2021 RACE CHART

# BEVERLY YACHT CLUB, MARION, MA

**CAUTION**  
 This chart is not to be used for navigation. It is intended for use as a reference only. No liability is assumed for any loss or damage resulting from its use. The chart is not to be used for navigation. It is intended for use as a reference only. No liability is assumed for any loss or damage resulting from its use.

**WARNINGS**  
 This chart is not to be used for navigation. It is intended for use as a reference only. No liability is assumed for any loss or damage resulting from its use. The chart is not to be used for navigation. It is intended for use as a reference only. No liability is assumed for any loss or damage resulting from its use.



**THIS CHART IS NOT TO BE USED FOR NAVIGATIONAL PURPOSES.**

**Except when indicated as turning marks, all yachts must pass East of Marks "3", "5" and "E", and pass South of marks "F" and "I".**

- - USCG Aid To Navigation
- - BYC Private Mark
- ⊙ - BYC Private Rock Marker

MARK	DESCRIPTION
3	Sippican Harbor Lighted Green Buoy "3" (Fl G 2.5s) East of Converse Point
5	Sippican Harbor Green Can "5" East of Seal Rocks
A	BYC Yellow Can "A" West of Butler Point
B	Sippican Harbor Red Nun "6" South of Ram Island
C	BYC Yellow Can "C" West of Planting Island
D	BYC Yellow Can "D" Northeast of Seal Rocks
E	BYC Yellow Can "E" Southeast of Converse Point
F	BYC Yellow Can "F" South of Bird Island
G	Sippican Harbor Lighted Red Buoy "2" (Fl R 4s) at Centerboard Shoal Southwest of Bird Island
H	BYC Yellow Can "H" at The Bow Bells East of Point Connett
I	BYC Yellow Can "I" East of Angelica Point
J	Portable Turning Mark to Leeward of Start / Finish Line
K	West Island Red Bell "ZSE" (off chart)
L	Weepecket Rock Lighted Red Gong "8" (Fl R) (off chart)
M	Bird Island Green Bell "3" Southeast of Bird Island
N	BYC Yellow Can "N" Southeast of Bird Island

MARK	DESCRIPTION
O	Portable Offset Turning Mark near Windward Turning Mark
P	Portable Alternate Finish Line Pin directly on the opposite side of start boat from starting line pin
Q	Hog Island Channel lighted Green Buoy "1" (Q Fl G) Southwest of Abiels Ledge
R	Cleveland Ledge Channel Lighted Green Gong "7" (Fl G 4s) Northeast of Cleveland Light
S	Cleveland Ledge Channel Lighted Green Buoy "3" (Q Fl G) Southwest of Cleveland Light
T	BYC Yellow Can "T" Southeast of Angelica Point
U	Portable Pin end of Start / Finish Line to Port of Signal Boat
V	Portable Turning Mark a Short Distance to Windward of Start / Finish
W	Portable Windward Turning Mark at Bearing and Distance Posted on signal boat
X	BYC Yellow Can "X" East of Peases Point
Y	BYC Yellow Can "Y" Southwest of The Cliffs
Z	Buzzards Bay Lighted Red Gong "10" (Fl R) Southeast of West Island (off chart)