



SAILING INSTRUCTIONS



Flying Scot® Wife-Husband Championship

August 20-22, 2021

Hosted by Massapoag Yacht Club
58 Lakeview St
Sharon, MA 01588
781-784-5828

Organizing Authorities: Flying Scot® Sailing Association (FSSA) and Massapoag Yacht Club.

1. RULES

- 1.1 The regatta will be governed by the rules as defined in the current *The Racing Rules of Sailing* (RRS).
- 1.2 US Sailing Prescriptions to RRS 63.2 and 63.4b will not apply.
- 1.3 The Technical Committee is the Measurement Committee appointed by FSSA.

2. NOTICES TO COMPETITORS

- 2.1 Notices to competitors will be posted on the official notice board located on LL Locker on the MYC Beach.

3. CHANGES TO SAILING INSTRUCTIONS

- 3.1 Any changes to the Sailing Instructions (SI's) will be posted before 0900 on the day they will take effect, except that any change in the racing schedule will be posted before 1800 the day before it will take effect.

4. SIGNALS MADE ASHORE

- 4.1 Signals made ashore will be displayed on the flagpole located on the MYC Beach.
- 4.2 When Flag AP is displayed ashore, "one minute" is replaced with "not less than 15 minutes" in the Race Signal AP. This changes "Race Signals".

5. SCHEDULE OF RACES

- 5.1 A competitors' meeting will be held Saturday, August 21, 2021 at 0930 on the clubhouse deck.
- 5.2 Three races are planned for Saturday, and two races are planned for Sunday.
- 5.3 Races are scheduled as follows:

5.3.1 Saturday, August 21	First Warning Signal of the Day	1000
5.3.2 Sunday, August 22	First Warning Signal of the Day	1000
5.3.3 Sunday, August 22	No Warning Signal after this time	1300
- 5.4 Flag A displayed, with no sound, while boats are finishing means "No more racing today."

6. CLASS FLAGS

- 6.1 Class flags will be:
 - 6.1.1 Championship Division – White flag with a blue FS insignia.
 - 6.1.2 Challenger Division – Red flag with a white FS insignia.
 - 6.1.3 Non-spinnaker Division – Purple flag with an H in the center.

7. RADIO COMMUNICATION

- 7.1 The RC will use VHF Channel 74 to communicate with competitors.
- 7.2 Competitors are only to contact the RC on the water in the event of emergencies, safety issues, to retire from a race or report a protest or penalty taken.

8. RACING AREA

- 8.1 The race area will be in the lake in front of the clubhouse.

9. THE COURSES

- 9.1 The courses to be sailed are as shown in the Appendix A Course Diagrams.
- 9.2 There will be an offset mark at the windward mark for Windward-Leeward courses.
- 9.3 There may be a leeward gate. If there is, boats shall sail between the gate marks in the direction from the previous mark and round either mark. If a gate mark is missing, the remaining mark shall be rounded to port.
- 9.4 Except for the leeward gate, all marks shall be rounded to port.
- 9.5 The course designation will be displayed in a frame on the port side of the RC pontoon boat.

10. MARKS

- 10.1 The starting marks will be a white cylindrical buoy with an orange flag and the RC pontoon boat.
- 10.2 The windward mark and gate marks will be orange or yellow balls/cylinders.
- 10.3 The offset mark will be a white ball.
- 10.4 The finishing marks will be a white cylindrical buoy and an RC vessel.
- 10.5 Change marks will be yellow balls. If the course is changed again, the original marks will be used.

11. SAFETY CHECK-IN

- 11.1 When the RC signal vessel displays Code Flag L prior to the first warning signal each day, competitors shall sail past the stern of the signal vessel on starboard tack and hail their sail number until acknowledged by the RC. Only the RC may protest alleged breaches of this sailing instruction. Each time a boat breaks this sailing instruction, it shall be posted on the Official Notice Board. The second time, and every time thereafter that a boat breaks this sailing instruction, the penalty shall be applied to the first race of the day on which the 2nd or 3rd infraction occurred, and shall be: 1) the Scoring Penalty calculated as stated in rule 44.3(c) or 2) another penalty. This changes RRS 60.1 and 60.3.

12. THE START

- 12.1 At the on-site registration, each Challenger and Non-spinnaker Division boat will be given a colored streamer which shall be flown from the leech of the mainsail at least 12 inches and not more than 36 inches above the clew.
- 12.2 The starting line will be between a staff displaying an orange flag on the RC pontoon boat and the course side of the starting mark on the port end.
- 12.3 As a courtesy, the warning signal for each Division may be preceded by a VHF announcement to alert competitors that a starting sequence is about to begin.
- 12.4 During any starting sequence, boats whose warning signal has not been made shall keep clear of the starting area.
- 12.5 As a courtesy, the RC may, after the starting signal, hail the sail and/or bow numbers of OCS boats via VHF Radio. The delay of such hails, the order of hailing, the failure of the RC to hail, or the failure of a competitor to hear such a hail shall not be grounds for redress. This changes RRS 62.1(a).
- 12.6 A boat that does not start within 4 minutes after her division's starting signal will be scored DNS without a hearing. This changes RRS 63.1 and A5.1.

13. CHANGED OR SHORTENED COURSE

- 13.1 If a changed or shortened course affects only one Division, the RC will display the class flag for the Division affected along with flag "C" or flag "S". If no class flag is displayed, flag "C" or flag "S" applies to all Divisions.
- 13.2 No course shall be shortened to fewer than three legs, two of which shall be to windward, and the second windward leg shall be at least as long as the first. The leg of the course from the windward mark to the offset mark will not count as a leg of the course for this rule.

14. THE FINISH

- 14.1 The finish will be between a staff displaying a blue flag on an RC vessel and the course side of the finishing mark.
- 14.2 Boats that retire before finishing should inform the RC as soon as possible and may do so by VHF radio.

15. PENALTY SYSTEM

- 15.1 RRS Appendix V Alternative Penalties
 - 15.1.1 V1 Penalty At The Time Of An Incident: The first two sentences of rule 44.1 are changed to: 'A boat may take a One-Turn Penalty when she may have broken one or more rules of Part 2 or rule 31 in an incident while racing. However, when she may have broken one or more rules of Part 2 while in the *zone* around a *mark* other than a starting *mark*, her penalty shall be a Two-Turns Penalty.
 - 15.1.2 V2 Penalty Taken After A Race: After a race, a boat that may have broken one or more rules of Part 2 or rule 31 in an incident while *racing* may take a Post-Race Penalty for that incident. A boat takes the penalty by delivering a written notice to the race office that identifies the race number and when and where the incident occurred. The penalty shall be a 30% Scoring Penalty, calculated as stated in rule 44.3(c). However, rules 44.1(a) and (b) apply, and the penalty shall not be taken after a protest hearing involving the incident has begun.

16. TIME LIMITS

- 16.1 The following time limits apply to each race:
 - 16.1.1 The time limit for the first boat to pass the first mark will be 30 minutes, and for the first boat to sail the course and finish will be 90 minutes.
 - 16.1.2 If either of these limits is not met, the race will be abandoned.
 - 16.1.3 Boats failing to finish within 30 minutes of the first boat to sail the course and finish in each Division will be scored Time Limit Expired (TLE) as described in the SCORING section below. This changes RRS 35 and A11.

17. PROTESTS, REDRESS & DIVISION ASSIGNMENTS

- 17.1 **Protests**: Protest forms will be available on the official notice board and shall be filed within 30 minutes of the RC pontoon boat docking time, which will be posted on the official notice board. The order of protests will be posted within 15 minutes of the end of the protest time. Protests will be held inside the clubhouse approximately in the order received.
- 17.2 **Redress Request**: If the RC posts a list of boats scored OCS, ZFP, UFD, NSC or BFD on the official notice board, a request for redress shall be made no later than 30 minutes after posting or the protest time limit, whichever is later. This changes RRS 62.2.
- 17.3 On the last day of racing, a request for reopening a hearing or a request for redress based on a Protest Committee decision shall be delivered no later than 30 minutes after the decision was posted. This changes RRS 62.2 and 66.

18. SCORING

- 18.1 The Low Point System of Appendix A of the RRS will apply with the following modifications:
 - 18.1.1 One race must be completed for each Division to constitute a series for that Division.
 - 18.1.2 Each boat's score shall be the total of her race scores, and no score shall be excluded. This changes RRS A2.1.
 - 18.1.3 A boat scored DNC, DNS, OCS, UFD, BFD, NSC, DNF, RET, DSQ or DNE shall be scored points for the finishing place one more than the number of boats assigned to its Division. This changes RRS A5.2 and RRS 5.3 will not apply.
 - 18.1.4 A boat scored TLE will be awarded points two greater than the last boat assigned to its Division to sail the course and finish within the 30 minute time limit. This changes RRS 35, A4, A5.1 and A5.2.

19. SUPPORT BOATS

- 19.1 A competitor shall not use support or spectator personnel or their equipment, including tow vessels, while away from the dock unless they have been pre-approved by the Protest Committee, RC, or made available to all competitors by an Organizing Authority.

20. PRIZES

- 20.1 Trophies will be awarded as stated in the Notice of Race.

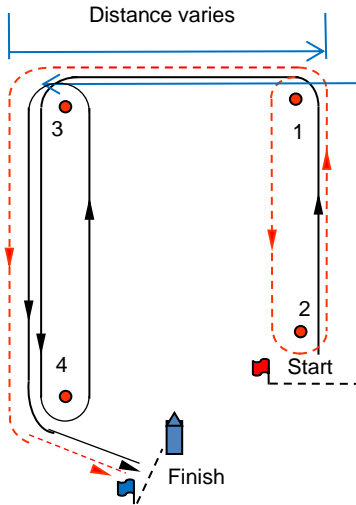
21. DISCLAIMER OF LIABILITY

- 21.1 The disclaimer is as stated in the Notice of Race.

Appendix A

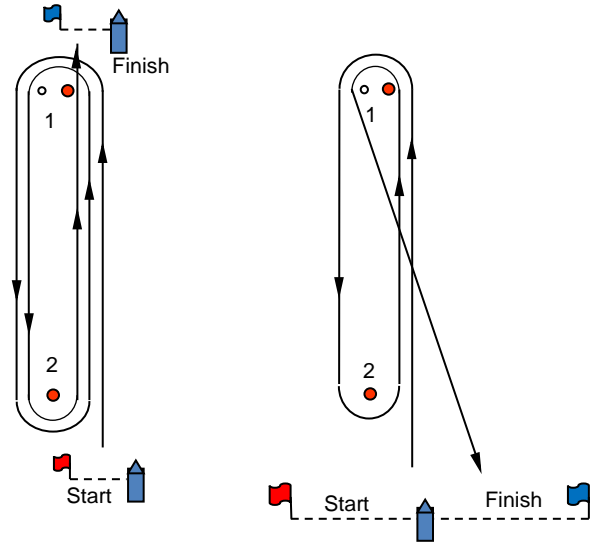
2021 MYC Regatta Diagrams

T trapezoid
T=start- 1-3-4-finish
TI=start-1-2-1-3-4-finish
TO=start-1-3-4-3-4-finish



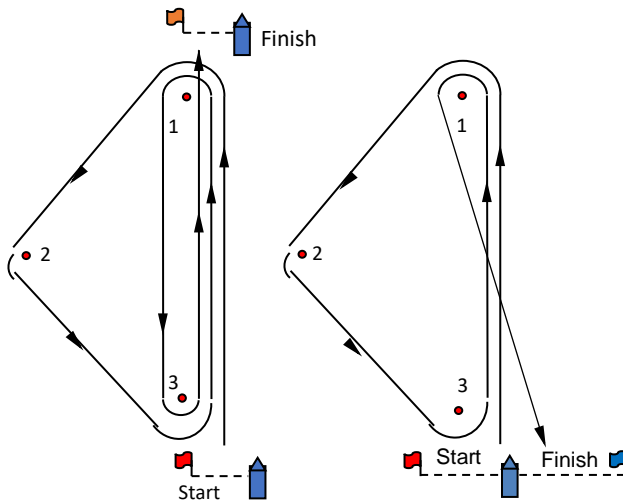
W windward/leeward
 separate start and finish
W3 = start-1-2-finish
W5 = start-1-2-1-2-finish

W windward/leeward
 start leeward
W2 = start-1-finish
W4 = start-1-2-1-finish
W6 = start-1-2-1-2-1-finish

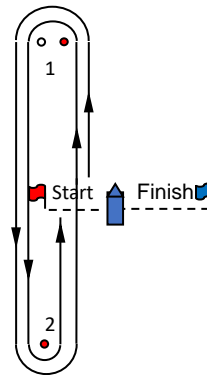


O Olympic
O=start-1-2-3-1-3-finish

G gold cup
G=start-1-2-3-1-finish



W windward/leeward
 start middle
W3 = start-1-2-finish
W5 = start-1-2-1-2-finish
W7 = start-1-2-1-2-1-2-finish



- W** Windward – leeward number of legs varies
- T** Trapezoid. Windward, reach, leeward, reach. Start 1-3-4-finish.
- TI** Trapezoid with windward – leeward leg on inner loop only. Start-1-2-1-3-4-finish
- TO** Trapezoid with windward – leeward leg on outer loop only. Start-1-3-4-3-4-finish
- O** Olympic. Triangle + windward, leeward, windward.
- G** Gold cup. Triangle + windward, leeward.