

**2021 Friday Night Race Summer Series  
South Beach Yacht Club**

**SAILING INSTRUCTIONS**

**1. Rules**

- 1.1. The regatta will be governed by the rules as defined in *The Racing Rules of Sailing 2021-2024 (RRS)*.
- 1.2. RRS 40 will be changed as follows: All competitors are required to wear lifejackets or other adequate personal buoyancy while racing. The “Y” flag will not be displayed.
- 1.3. Appendix T, Section A, T1 shall apply: The first two sentences of RRS 44.1 are changed to: ‘A boat may take a One-Turn Penalty when she may have broken a rule of Part 2 or RRS 31 while *racing*. However, when she may have broken a rule of Part 2 while in the *zone* around a *mark* other than a starting *mark*, her penalty shall be a Two-Turns Penalty.

**2. Entry**

- 2.1. Eligible boats shall complete registration online ([www.southbeachyachtclub.org](http://www.southbeachyachtclub.org)) in accordance with the Notice of Race.
- 2.2. All boats are invited to participate. Each boat shall have a 2021 Northern California PHRF certificate.
- 2.3. Boats without a 2021 Northern California PHRF handicap certificate will be assigned a PHRF rating by the Race Committee.
- 2.4. One Design Fleets will be made at the discretion of the Organizing Authority.

**3. Signals Made Ashore**

- 3.1. Signals made ashore will be displayed from the Mast on the South Beach Yacht Club Clubhouse upper deck.
- 3.2. When the AP flag is displayed from the mast, “1” minute is replaced by “not less than 30 minutes”.

**4. Communications with Competitors**

- 4.1. Official Notices will be posted on Friday Night Series electronic bulletin board: <http://www.regattanetwork.com/event/22694> Changes to the Sailing Instructions will be posted by 1400 on the day they are to take effect.
- 4.2. This will be a radio-controlled event. **Competitors SHALL MONITOR VHF CHANNEL 78** for all on-water communications with the Race Committee. A working VHF radio is a requirement for participation in this series.
- 4.3. Communication from the Race Committee shall not be considered outside help. This changes RRS 41.

**5. Number and Schedule of Races: 7/16, 7/23, 7/30, 8/6, 8/20, 8/27.**

- 5.1. The scheduled time for the first Warning Signal is 1830 hours

## 6. Racing Area

6.1. The racing area will be in the South Bay waters of San Francisco Bay.

## 7. Courses & Marks

- 7.1. Courses, mark descriptions and a chartlet are described in Attachment One, "Official Description of Marks and Courses".
- 7.2. No later than the Warning Signal, a code flag will be displayed from the Race Committee Boat designating the course to be sailed.
- 7.3. No later than the warning signal, a flag designating the mark rounding direction will be displayed from the signal boat. If a **red flag** is displayed, all **temporary marks, with the exception of the gate (G)**, shall be rounded to port. If a **green flag** is displayed, all **temporary marks, with the exception of the gate (G)**, shall be rounded to starboard. Absence of a rounding flag when temporary marks are set, is a race committee error and should be called to the attention of the race committee.
- 7.4. Mark G will be a gate. If the race committee is unable to place both sides of the gate, a single leeward mark will be set, which is to be rounded in the same direction as described in 7.3.
- 7.5. The windward and reaching marks are to be sailed as a pair (W-R), in the direction displayed on the signal boat as described in 7.3. They are never to be "circled" individually. The rounding flag is the controlling factor, not the size or shape.

## 8. Starting Order

8.1. The intended starting order is as follows: (TBD depending on entries)

Starting Order	Division	Division Flag
1830 Warning	Spinnaker PHRF 89 and below	D (Delta)
	J88 and J105	E (Echo)
	Spinnaker PHRF 90 and above	F (Foxtrot)
	Non-Spinnaker 140 and below	G (Golf)
	Non-Spinnaker 141 and above	H (Hotel)

## 9. The Start

- 9.1. The starting line will be between a staff displaying an orange flag on the signal boat and a temporary orange mark designated as T1. In the case that T1 is not set, the starting line pin shall be YRA mark "SC1".
- 9.2. Each boat is requested to **sail by** the committee boat prior to the first warning to check in. **There will be no Radio Check-in. Requests for check-in confirmation by radio will be ignored.**
- 9.3. The Race Committee reserves the right and option to combine fleets into a single start, in which case class flags will be flown simultaneously. Scoring will be by designated fleets.
- 9.4. A boat starting later than 4 minutes after her start signal will be scored DNS without a hearing. This changes RRS A4 and A5.

## 10. The Start Sequence – This changes RRS 26

10.1 This is a radio-controlled event. Radio communication takes precedence over visual signals.

10.2 All timing signals shall be by horn.

10.3 The Race Committee may relay timing signals by VHF radio.

10.4 Division and Course shall be announced by the Race Committee on VHF radio.

10.5 Course number may be displayed by Digital Board or by Flags in addition to VHF announcement, subject to race committee capacity.

10.6 It is the intent of the race committee to resume using rolling starts sometime during this series, as race committee staffing permits. The decision to use, or not use, rolling starts will be announced repeatedly, by radio as soon as the signal boat is on station. In the absence of rolling starts, unless the postponement flag is displayed, the next division warning will follow the start of the previous division in less than five minutes.

## 11. Recalls

The Race Committee may hail the sail numbers(s) of the boat(s) identified On Course Side (OCS) of the starting line at the starting signal. **The failure of a hail, the failure of a boat hearing the hail or the order of the hails shall not be grounds for redress. This changes RRS 62.1(a).**

## 11. Change of Course after the Start

To change the next leg of the course, the race committee will move the original mark (or move the finishing line) to a new position.

## 12. The Finish

12.1. The finishing line will be the entrance to McCovey Cove, between the north-eastern corner of Pier 48 and the green channel marker FL G 2.5s "PA".

12.2. Boats finishing after sunset are requested to shine a light on their sail number when approaching and crossing the finish line.

12.3. Boats retiring before finishing shall notify the Race Committee as soon as practical either on VHF channel 78 or 415-495-2295.

## 13. Restricted Areas

Boats whose preparatory signal has not been made shall keep clear of any boat whose Preparatory signal has been made. Boats shall not cross the Start line except when preparing to start or starting. Boats observed by the race committee to be in violation of this instruction may be scored DNF without a hearing. This changes RRS 63.1.

## 14. COMMERCIAL TRAFFIC AND SAFETY

Boats shall not impede the passage of commercial vessels and shall comply with the USCG Navigation Rules. Any boat observed by the race committee to be in violation of this instruction may be scored DNF without a hearing. This changes RRS 63.1.

## 15. Time Limits

15.1. Boats finishing after 2130 hours will be scored as DNF. This changes RRS 35, A4 and A5.

15.2. The Race Committee will be on station at the Finish Line until 2100. Boats finishing later than 2100 hours shall take their own finishing time and the names of surrounding boats, where possible, and report it to the Race Committee no later than 2145.

## **16. Scoring**

16.1. Time on Time corrections shall be used; corrected times will be calculated to the nearest second.

16.2. Fleet and division assignments is at the sole discretion of the Race Committee.

16.3. Four completed races constitute a series.

16.4. RRS A5.3 will apply.

16.5. There will be one excluded score if 4 races are completed.

## **17. PROTESTS AND REQUESTS FOR REDRESS**

17.1. Protests and requests for redress may be written on Standard US Sailing Protest Forms available from the Race Committee. Protests and Requests for Redress for all divisions shall be delivered to a Race Committee representative no later than 2200 hours on the day of the race.

17.2. Unless otherwise posted, the protest will be heard the Thursday following the FNS race being protested at 1900 in the office at South Beach Yacht Club. This shall serve as proper notification per RRS 63.2.

17, 3. Except for RRS 69 and at the discretion of the Protest Committee Chair, hearings will take place as scheduled, with or without the presence of all parties.

## **18. Awards**

18.1. Prizes will be awarded after each race for the first place winner in each division.

18.2. Prizes must be picked up by the end of the next race.

18.3. Trophies for first, second, and third places for each division will be awarded at the end of the series.

### Attachment 1 – Official Description of Marks and Courses

Reference Sailing Instruction 7.3 for rounding direction for temporary marks in courses 8-19.

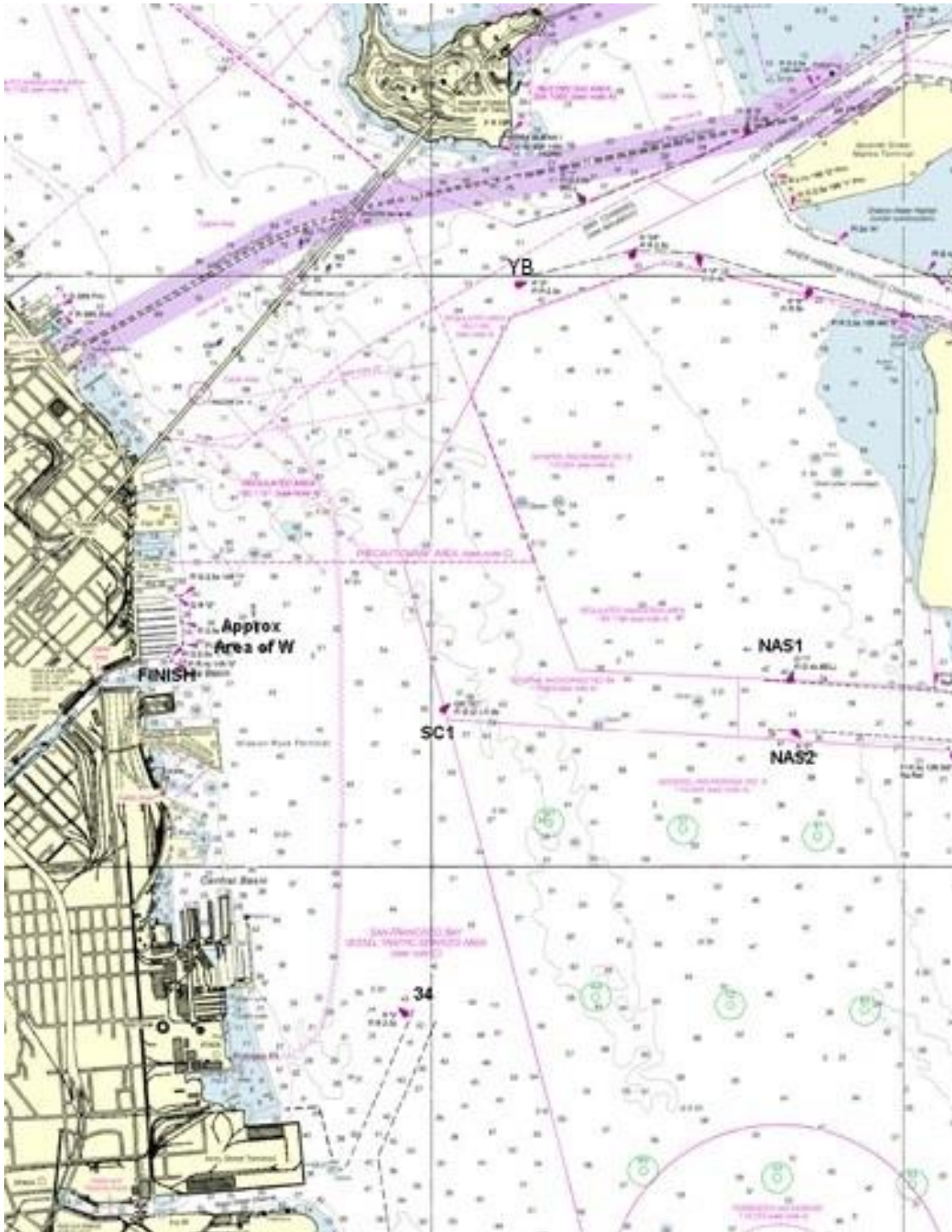
Course #	Marks and rounding order	Approx. Distance
1	Start -> AS1(p) -> 34(p) -> SC1(p) -> Finish	4.1
2	Start -> AS1(p) -> 34(p) -> SC1(p) -> 34(p) -> SC1(p) – Finish	6.35
3	Start -> AS1(p) -> 34(p) -> SC1(p) -> AS1(p) -> SC1(p) -> Finish	6
4	Start -> AS1(p) -> 34(p) -> NAS1(p) -> Finish	6.85
5	Start -> AS1(p) -> NAS1(p) or NAS2(s) -> Finish	7
6	Start -> AS1(p) -> SC1(p) -> AS1(p) -> SC1(p) -> Finish	4.7
7	Start -> AS1(p) -> YB(p) -> Finish	5
8	Start -> W -> R -> YB(p) -> Finish	4.2
9	Start -> W -> R -> SC1(p) -> YB(p) -> Finish	5
10	Start -> W -> R -> NAS1(p) or NAS2(s) -> Finish	7.15
11	Start -> W -> R -> NAS1(p) or NAS2(s) -> AS1(p) -> SC1(p) -> Finish	9.15
12	Start -> W -> R -> SC1(p) -> Finish	3.5
13	Start -> W -> R -> SC1(p) -> W -> R -> SC1(p) -> Finish	5.8
14	Start -> W -> R -> SC1(p) -> W -> R -> SC1(p) -> W -> R -> SC1(p) -> Finish	8.9
15	Start -> W -> R -> NAS1(p) or NAS2(s) -> W -> R -> NAS1(p) or NAS2(s) -> Finish	12.9
16	Start -> W -> R -> Gate -> Finish	3.6
17	Start -> W -> R -> Gate -> W -> R -> Gate -> Finish	5.8
19	Start -> W -> R -> Gate -> W -> R -> Gate -> W -> R -> Gate -> Finish	8

### Mark Descriptions

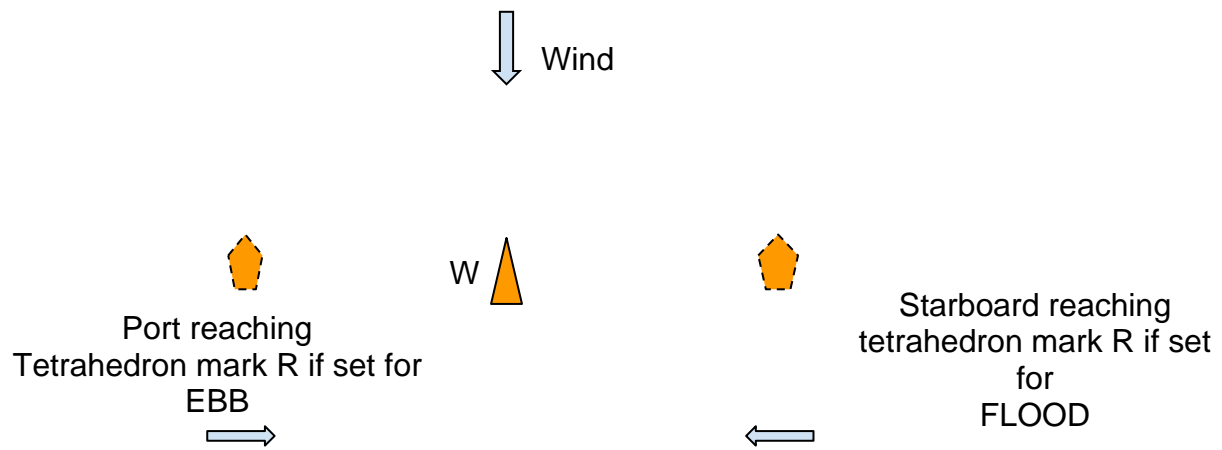
Mark	Mark Description	Mark	Mark Description
Start	The starting line will be between a staff displaying an orange flag on the RC boat and a temporary orange mark called T1. In the absence of T1, SC1 will be the start line pin.	Finish	Finish line between the eastern corner of Pier 48 and Green channel marker FL G 2.5s "PA"
NAS1/NAS2	NAS1 Alameda Channel Mark "1" FL G 4s Bell round to PORT or NAS2 Alameda Channel Mark "R2" FI R 4s round to STARBOARD	AS1	Yellow mark, approx. 0.25 nm East of BVBC
YB	Yerba Buena is a Red buoy "2" FI R 2.5s approx. 0.5 nm South of Yerba Buena Light House	34	Red buoy "2" FL R 2.0s, approx. 0.5 nm east of Potrero Point
W	A temporary 8ft Orange Cone approx. 700 yards East of McCovey Cove ***	R	A temporary Orange Tetrahedron reaching mark that may be set up current of W mark to square up the downwind leg. ***
Gate	Two Inflatable 8 ft. orange cones set as a leeward gate set in the vicinity upwind of the starting area. Enter between the two marks in the direction from the previous mark and round either the left mark to port or the right mark to starboard.	SC1	SC1 is a green & red buoy, "SC" FL G(2+1), approx. 1.0 nm ENE of Mission Rock Terminal

\*\*\*

Due to changing currents, equipment failure, or human error, the size, shape, and/or orientation of the W-R marks may vary. W-R is to be rounded, as a pair, in the direction indicated in 7.3. They are never to be "circled" individually.



Course Chartlet



It is the intent of the race committee to set W-R using the size, shape and orientation described here. However due to changing currents, equipment failure, or human error, the size, shape, and/or orientation may vary. W-R is to be rounded, as a pair, in the direction indicated in 7.3. They are never to be "circled" individually.

