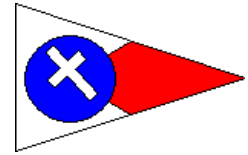


COMMODORE'S REGATTA

July 11, 2021



SANTA CRUZ YACHT CLUB, SANTA CRUZ, CA

Sailing Instructions

1. Rules

- 1.1 The regatta will be governed by the rules as defined in *The Racing Rules of Sailing*.
- 1.2 Monterey Bay PHRF rules and current ratings will apply. One-design participants that do not have a valid Monterey Bay PHRF certificate will be assigned a PHRF rating by the Race Committee.
- 1.3 All competitors are required to wear personal flotation devices while racing per RRS 40.1

2. Notices to Competitors

- 2.1. Notices to competitors will be posted on-line at:
https://www.regattanetwork.com/event/22721#_docs or at SCYC.org/racing.
- 2.2. On the water, the Race Committee may use VHF Channel 68 for communication.

3. Changes to Sailing Instructions

- 3.1 Any change to these sailing instructions will be posted by 2000 hours the day before racing or 1100 hours on race day at scyc.org/racing.

4. Signals Made Ashore

- 4.2. Signals made ashore will be displayed from the SCYC Clubhouse flagpole.
- 4.3. When flag AP is displayed ashore, '1 minute' is replaced with 'not less than 60 minutes' in the race signal AP.

5. Schedule of Races and Check-in

- 5.1. There is one race scheduled for all participating boats.
- 5.2 The warning signal for the race is 1255 hours on July 11, 2021
- 5.3 Yachts shall check in with the Race Committee on VHF Ch.68 or by hailing prior to the warning.

6. Class Flag

- 6.1 The class flag will be code Flag F.

7. Marks and the Course

- 7.1. Addendum A shows the courses, a description of each mark, and the rounding order for each mark.
- 7.2 Code flag B or D will be displayed prior to the first warning to indicate the course to be sailed.

8. The Start

- 8.1. The starting line will be between a staff displaying an orange flag on the Signal Vessel and the SF mark.
- 8.2. This is a reverse-handicap race. Boats will start in reverse order of their PHRF handicap rating with the slower rated boats starting at specified times ahead of faster rated boats.

- 8.3. The Adjusted Starting Time for each boat will be available online no later than 1100 hours the day before racing on the event website. This will serve as a boat's start time which changes RRS A3.
- 8.4. The starting signal will be in accordance with RRS 26. Thereafter, no additional starting signals will be given. This changes RRS 26. The first sentence of RRS 29.1 is changed to read: When at a boat's Adjusted Start Time any part of her hull, crew or equipment is on the course side of the starting line or she must comply with RRS 30.1 the Race Committee will promptly display flag X with one sound. The second sentence is changed so that the flag remains displayed for three minutes or 10 seconds before any later Adjusted Starting Time.
- 8.5. All start times will be based on the official Signal Vessel clock, and competitors are encouraged to synchronize their timepieces with that clock before leaving the dock. The Race Committee may periodically announce the clock time on the VHF.
- 8.6. The Race Committee may hail, on VHF, the sail number or other identifying feature of any Yacht that was on the course side of the starting line at her Adjusted Starting Time. The failure of a hail, the failure of a boat to hear a hail, or the order of the hail(s) shall not be grounds for a boat to request redress. This changes RRS 62.1
- 8.7 The preamble of Part 4 is changed so that RRS 41, 42, 44, 45, 47, 49, 51 and 52 only begin to apply to a boat four minutes prior to a boat's Adjusted Starting Time.
- 8.8 Boats may choose to sail with or without a spinnaker. See Attachment B for the appropriate PHRF adjustment for the course sailed. Boats sailing non-spinnaker shall inform the Race Committee at the Skippers Meeting or when checking in.

9. Postponements

- 9.1. If the starting signal is postponed, the postponement will be in full minute increments. The Signal Vessel will display the number of minutes of postponement with numeral pennants. A boat shall add the number of minutes displayed to its Adjusted Starting Time to determine its new Adjusted Starting Time.
- 9.2. The Race Committee may periodically announce the number of minutes of postponement on the VHF.

10. Finish

- 10.1. The finishing line will be between a staff displaying an orange flag on the Signal Vessel and the SF mark.

11. Penalty System

- 11.1 RRS 44.1 is changed so that the Two-Turns Penalty is replaced by the One-Turn Penalty.

12. Protests and Requests for Redress

- 12.1. Protest forms are available at the SCYC Regatta Shed located in the dry storage area and the SCYC Club House Bar. Protests and requests for redress or reopening shall be delivered to either of these locations, within the appropriate time limit.
- 12.2. The protest time limit is sixty minutes after the Signal Vessel has arrived at her berth in Santa Cruz Harbor. The protest filing time limit will be posted on the SCYC Regatta Shed.
- 12.3. Notices will be posted no later than thirty minutes after the protest filing time limit to inform competitors of hearings in which they are parties.

13. Scoring

- 13.1 Scoring will be determined for each Division by the order of the finish of each boat. This changes RRS A3.

Addendum A

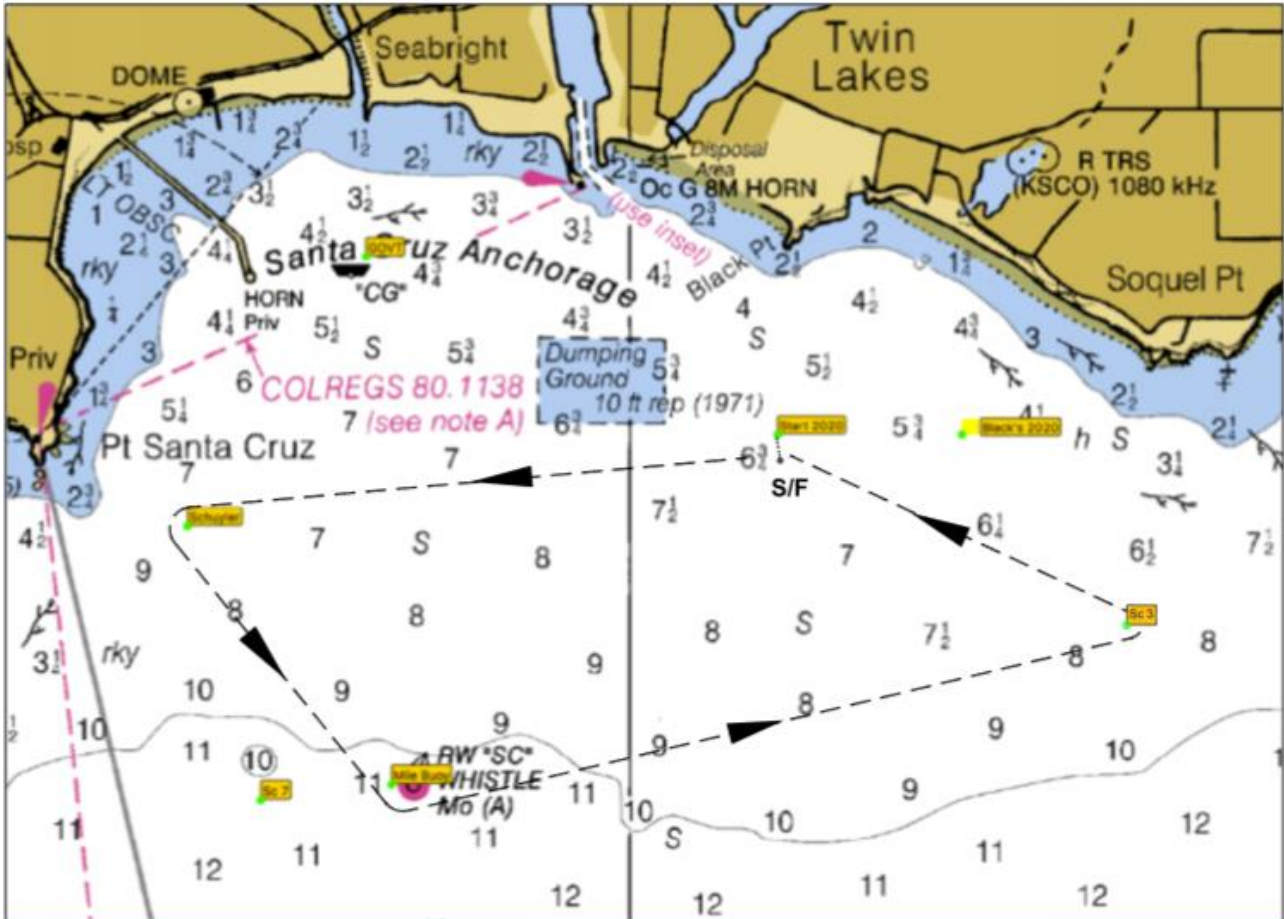


Chart indicating relative positions of marks. Not to be used for navigation.

Marks:

Schuyler, Mile, and SC3 marks listed in the table below are rounding marks.

All marks are rounded to port.

| Mark Name | Mark Location | Mark Description |
|------------------|--------------------------|------------------------------|
| Schuyler (Wharf) | 36°56.87'N – 122°01.26'W | Yellow Ball "Schuyler" |
| Mile | 36°56.35'N – 122°00.58'W | Large RW "SC" WHISTLE buoy |
| SC3 | 36°56.50'N – 121°58.02'W | Yellow cylinder marked "SC3" |
| SF Mark | 36°57.06'N – 121°59.63'W | Yellow Ball |

Courses:

| | | |
|-------------|---|---------|
| Code flag B | SF - Schuyler - Mile - SC3 - SF | 5.56 NM |
| Code flag D | SF - Schuyler - Mile - SC3 - SF Gate - Schuyler -SF | 8.21 NM |