

---

**Lahaina YC Coastal #2**

May 29, 2021

Lahaina Yacht Club

Lahaina HI

**SAILING INSTRUCTIONS**

**1 RULES**

1.1 The regatta will be governed by the rules as defined in *The Racing Rules of Sailing*.

1.2 The US Sailing prescriptions will apply.

1.3\* The HYRA prescriptions will apply.

1.4 Racing rule(s) 44.1 will be unchanged: the 2-turns Penalty is in effect.

1.5 If there is a conflict between languages the English text will take precedence.

**2 NOTICES TO COMPETITORS**

Notices to competitors will be posted on the official notice board(s) located at The LYC Dock Box Slip 42.

**3 CHANGES TO SAILING INSTRUCTIONS**

Any change to the sailing instructions will be posted before 08:30 on the day it will take effect, except that any change to the schedule of races will be posted by 20:00 on the day before it will take effect.

**4 SIGNALS MADE ASHORE**

4.1 Signals will not be made ashore.

**5 SCHEDULE OF RACES**

5.1\* Dates of racing:

<i>Date</i>	<i>Class A</i>	<i>Class X</i>	<i>Class C</i>
5/29/2021	racing	racing	racing

5.2 Number of races:

<i>Class</i>	<i>Races per day</i>
A	1
X	1
C	1

Extra race(s) per day may be sailed, provided that all registered racing yachts are in agreement and the change is made according to instruction 3.

5.3\* The scheduled time of the warning signal for the first race each day is 09:55

5.4 To alert boats that a race or sequence of races will begin soon, the RC/Rabbit will make one sound/radio hail approximately ONE minute before a warning signal is made.

5.5 No warning signal will be made after 1600.

6\* **CLASS FLAGS: in the event that no committee boat is present, no flags will be displayed**  
Class flags will be:

<i>Class</i>	<i>Flag</i>
A	A
X	A
C	A

## 7 **RACING AREAS**

Attachment RA shows the location of racing areas.

## 8 **THE COURSES**

8.1 The diagrams in Attachment A show the GPS Mark location(s).

8.2 The ORDER of which marks are to be passed will be announced at the Skippers Meeting

8.3 the SIDE on which each mark is to be passed will be announced at the Skippers Meeting

8.4 Rule 32: After the starting signal, the RC may shorten the course via hail on VHF 71 or abandon the race via hail on VFH71

9 **MARKS: all marks will be virtual GPS (see attachment RA for GPS coordinates)**

9.1\* No marks will be set

## 10 **AREAS THAT ARE OBSTRUCTIONS**

The following areas are designated as obstructions: NONE

## 11 **THE START**

11.1 Races will be started by using rule 26 with the warning signal made 5 minutes before the starting signal. In lieu of no committee boat present a rabbit start will be used.

- **Rabbit Start: The Rabbit will be sailing on starboard tack and start the 5 min sequence. ALL racing yachts shall be to windward and behind the rabbit. The rabbit shall hail on 71 at 4 min/1 min. At 0 the rabbit shall tack onto port to signal the opening of the start line. All racing yachts shall take the Rabbits transom.**

11.2 Boats whose warning signal has not been made shall avoid the starting area during the starting sequence for other races.

11.3 A boat starting later than 10 minutes after her starting signal will be scored Did Not Start without a hearing. This changes rule A4.

## **12 CHANGE OF THE NEXT LEG OF THE COURSE**

**12.1** To change the next leg of the course, the race committee will announce any course change via hail on VHF71

## **13 THE FINISH**

**13.1** The finishing line will be Announced at the skippers meeting. Finishing will be done by leaving the GPS Mark a maximum of two boat lengths to starboard in an approximate line perpendicular to the prevailing wind.

**13.2** If the race committee is absent when a boat finishes, she should report her finishing time, and her position in relation to nearby boats, to the race committee at the first reasonable opportunity. Email the time [sailingdirector@lyc.us](mailto:sailingdirector@lyc.us) A screen shot of your finish time is best!

## **14 PENALTY SYSTEM**

**14.1** For the A and C class(es) rule 44.1 is unchanged.

## **15 TIME LIMITS AND TARGET TIMES**

**15.1\*** **Target Time:** NONE

**15.2** Boats failing to finish within 60 minutes after the first boat sails the course and finishes will be scored Did Not Finish without a hearing. This changes rules 35, A4 and A5.

## **16 PROTESTS AND REQUESTS FOR REDRESS**

**16.1** Protest forms are available from the Race Committee. Protests and requests for redress or reopening shall be delivered there within the appropriate time limit.

**16.2** For each class, the protest time limit is 90 minutes after the last boat has finished the last race of the day or the race committee signals no more racing today, whichever is later.

**16.3** Notices will be posted no later than 30 minutes after the protest time limit to inform competitors of hearings in which they are parties or named as witnesses. Hearings will be held in the protest room, located at Lahania Yacht Club.

## **17 SCORING**

**17.1** The scoring system is as follows: Low Point System.

**17.2** 1 race is required to be completed to constitute a series.

- 17.3**
- (a) When 3 or fewer races have been completed, a boat's series score will be the total of her race scores.
  - (b) When from 4 to 7 races have been completed, a boat's series score will be the total of her race scores excluding her worst score.
  - (c) When 8 or more races have been completed, a boat's series score will be the total of her race scores excluding her two worst scores.

## **18 SAFETY REGULATIONS**

**18.1** A boat that retires from a race shall notify the race committee as soon as possible.

**19 SUPPORT BOATS**

**19.1** Team leaders, coaches and other support personnel shall stay outside areas where boats are racing from the time of the preparatory signal for the first class to start until all boats have finished or retired or the race committee signals a postponement, general recall or abandonment.

**19.2** Support boats shall notify the race committee and monitor the Race Channel (71)

**20 TRASH DISPOSAL**

All Trash must be kept aboard and disposed of properly ashore.

**27 RADIO COMMUNICATION**

All boats shall monitor channel 71

**28 PRIZES**

Prizes will be given as follows: Points will be awarded towards overall Season Points Standings

**28.1** Post Racing Parties – No formal after party is scheduled

**29 DISCLAIMER OF LIABILITY**

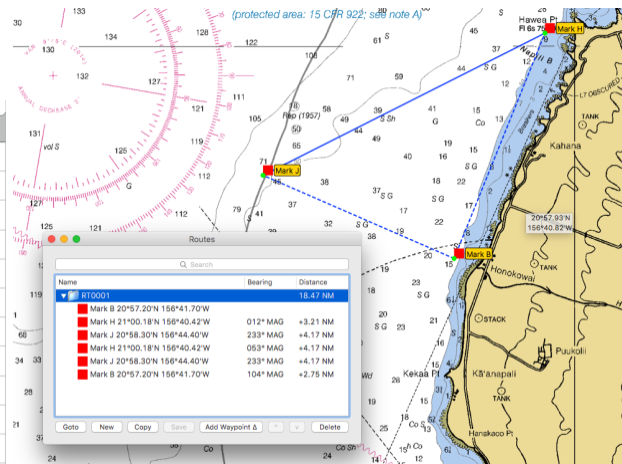
Competitors participate in the regatta entirely at their own risk. See rule 4, Decision to Race. The organizing authority will not accept any liability for material damage or personal injury or death sustained in conjunction with or prior to, during, or after the regatta.

## ADDENDUM RA

The Course area will be offshore the island of Maui in the approximate area of Honokowai-Hawea Point depending on the prevailing wind as well as other circumstances.

### All Coastal Waypoints

	A	B	C	D	E
1	Mark W	20°51.76'N	156°42.72'W	Lahaina 2 mile mark	
2	Mark K	20°46.49'N	156°44.09'W	Auau Mid Channel	
3	Lanai Finish	20°55.68'N	157°02.72'W	Lanai Finish	
4	Mark A	20°52.00'N	156°41.30'W	Lahaina - Black Mooring	
5	Mark B	20°57.20'N	156°41.70'W	Honokowai	
6	Mark C	21°01.10'N	156°39.00'W	Honolua	
7	Mark D	21°08.00'N	156°42.20'W	Mokuho'oniki	
8	Mark E	21°01.90'N	156°52.50'W	Kamalo Harbor	
9	Mark F	20°52.20'N	156°48.30'W	Lanai 1	
10	Mark G	20°48.50'N	156°46.90'W	Lanai 2	
11	Mark H	21°00.18'N	156°40.42'W	Hawea Pt	
12	Mark J	20°58.30'N	156°44.40'W	Kalohi	



### Coastal Course A

### All Coastal GPS Chart (Lanai finish not shown)

