



SAILING INSTRUCTIONS

The Wild Bill Rig Race

Saturday, June 26, 2021

Organizing Authority: Channel Islands Yacht Club
4100 S Harbor Blvd, Oxnard, CA 93035 805.985.2492

1. RULES

This race will be governed by the *Racing Rules of Sailing (RRS)*.

2. CHANGES TO THE SAILING INSTRUCTIONS

Written changes to the Sailing Instructions will be posted online by 0930hrs on the day of the event at <https://www.regattanetwork.com/event/22792>. On the water, changes to a sailing instruction may be made only by hailing all competitors on VHF Channel 68 and/or displaying Signal Flag L, informing them of the change, and receiving confirmation from each competitor that they have heard and understood the change.

3. SCHEDULE: Saturday, June 26, 2021

0830 Virtual Skippers Meeting via Zoom. Click on the following link:

<https://us02web.zoom.us/j/3996134278?pwd=YlVJeENmNDc4S1hYOVFVWm11MkZKQT09>

Meeting ID: 399 613 4278 Password: 9Lfakk

1055 Planned 5-minute warning signal for first start at 1100

1600 Post-race meal and awards presentation at CIYC

4. CLASSES

PHRF Spinnaker and Non Spinnaker classes are welcome to participate. Additional classes, class breaks, and starting order will be announced at the Virtual Skippers Meeting. Class Flags will be numeral pennants:

- 1 Spinnaker
- 2 Non Spinnaker

5. THE START

- a. Prior to her start, each boat shall check in with the Race Committee (RC) by VHF radio (Channel 68) or by hailing the RC boat
- b. Races will be started using Rule 26. The port end of the starting line is the Mandalay spar buoy and the starboard end is an orange flag on the port side of the RC boat. Boats whose warning signal has not been made shall avoid the starting area.
- c. Although not required to do so, the RC *may* attempt to hail a boat if it is On Course Side (OCS) at its starting signal. Any boat that suspects it is OCS should exonerate herself without waiting for a recall flag or to be hailed.
- d. The RC may schedule a 1-minute gap between the starting signal of one class and the warning signal of the next class
- e. A boat that does not start less than 5 minutes after her starting signal will be scored Did Not Start without a hearing. This changes RRS A5.1 and A5.2.

6. THE FINISH

- a. The RC requests to be notified (VHF Channel 68 or phone (Mike 805.796.3051) when the first boat to finish is approximately 30 minutes from the Channel Islands Harbor entrance, to assure that the RC is on station
- b. Spinnakers must be doused (head below the level of the gooseneck fitting on the boom) before crossing the finish line. Failure to douse before crossing the finish line will result in a 5-minute penalty added to the boat's elapsed time by the RC without a hearing for non-compliance; this changes RRS A5.1 and A5.2.
- c. The finish line will be between the navigational light on the north end of the detached breakwater at the Channel Islands Harbor (starboard end) and a staff with an orange flag/PFD on the beach at approximately 34°09.705'N 119°13.781'W (port end).
- d. The RC will acknowledge each boat's finish with a horn blast. After finishing, racers shall avoid any barges and their buoys in the harbor entrance
- d. If the RC is absent when a boat finishes, the boat's crew shall contact the RC at the first reasonable opportunity to report her finishing time and position relative to other boats
- e. A boat that starts but subsequently retires without finishing is asked to notify the RC at her earliest opportunity.

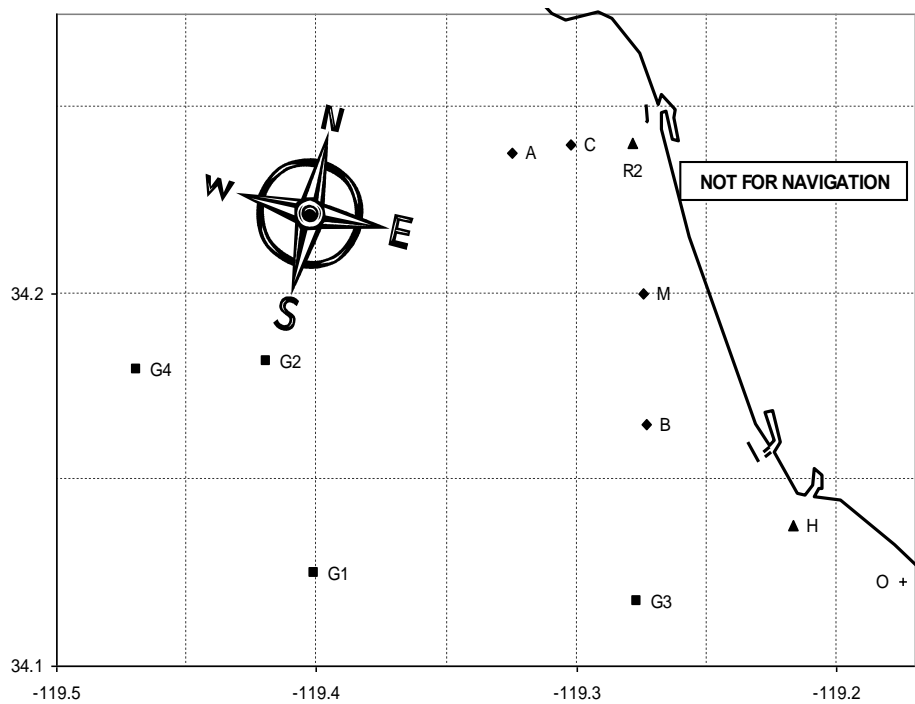
7. THE COURSES

The race will begin near the Mandalay race buoy and finish near the entrance to Channel Islands Harbor. Courses will be chosen from the Wild Bill Rig Race Course Chart with course distances between 8.4 and 21.5nm and one or more oil platforms as marks of each course. Their associated mooring buoy(s) are also marks of the course.

8. **PROTESTS:** Protests shall be delivered to the RC within 1 hour of the finish of the protesting boat or within 1 hour of her return to her harbor if she retires. Protest forms are available online at US Sailing.
9. **SAFETY EQUIPMENT:** Each skipper is responsible for compliance with applicable US Sailing Safety Equipment Requirements for Nearshore. The RC reserves the right to disqualify nonconforming boats. All boats shall carry a VHF radio with Channels 16 and 68. The minimum number of persons aboard shall be 2. The RC will monitor VHF Channel 68 throughout the race.
10. **POST-RACE HOSPITALITY AND AWARDS:** Beginning at approximately 1600hrs CIYC will host a post-race meal and presentation of individual race awards. The Wild Bill Rig Race Perpetual Trophy will be engraved with the winners' names and classes and displayed at CIYC.

2021 WILD BILL RIG RACE - COURSE CHART

Course #	Distance (nm)	Race Marks & Rounding	Approx Bearing to 1 st Mark
1	8.4	S G3(p) Fc	181°T (168°M)
2	9.7	S G3(p) B(s) Fc	181°T (168°M)
3	16.3	S G1(p) Fc	234°T (221°M)
4	13.1	S G3(p) M(s) Fc	234°T (221°M)
5	17.2	S G1(p) G3(p) Fc	234°T (221°M)
6	16.6	S G2(p) Fc	261°T (248°M)
7	21.5	S G4(p) Fc	263°T (250°M)
8	15.0	S A(p) G3(p) Fc	313°T (300°M)



Code	Marks	Approximate Location
A	Fish Sticks spar buoy	34° 14.5' N 119° 19.8' W
B	"Wes" Mark (spar buoy)	34° 09.9' N 119° 16.4' W
C	Chips spar buoy	34° 14.4' N 119° 18.2' W
H	Hueneme buoy	34° 08.3' N 119° 13.0' W
Sm	Mandalay spar buoy (Start)	34° 12.0' N 119° 16.5' W
R2	Ventura R2 whistle buoy	34° 14.4' N 119° 16.7' W
G1	Platform Gail	34° 07.5' N 119° 24.0' W
G2	Platform Gilda	34° 10.9' N 119° 25.1' W
G3	Platform Gina	34° 07.0' N 119° 16.6' W
G4	Platform Grace	34° 10.8' N 119° 28.1' W