

Pluff Mud Championship

SEPTEMBER 11-12, 2021

The Beaufort Yacht & Sailing Club

SAILING INSTRUCTIONS

FOR THE OPTIMIST, O'Pen Skiff and Sunfish COURSE

1. RULES

- 1.1. This regatta will be governed by the rules as defined in *The Racing Rules of Sailing for 2021-2024*.
- 1.2. Coaches, parents and competitors are expected to have read and understand the Junior Code of Ethics, which will be enforced.
- 1.3. RRS 2021-2024 Appendix V shall apply as the Alternative Penalty System.

2. NOTICES TO COMPETITORS

Notices to competitors will be posted on the official notice board located on the screen porch of the clubhouse.

3. [DP][NP] Covid-19 Safety

Registered competitors who, at any time between September 4 and 11, experience symptoms of corona virus Covid-19 shall not race. The entry fee paid by such competitors will be refunded following their withdrawal from the regatta.

4. CHANGES TO THE SAILING INSTRUCTIONS

- 4.1. On-shore changes to the sailing instructions will be posted within 15 minutes of the close of the competitors' meeting on Saturday and by 9:30 on Sunday.
- 4.2. Changes to the schedule will be posted by 7:00 pm on the day before the change is in effect.
- 4.3. On-the-water changes to the sailing instructions will be made before the warning signal of a race by hoisting code flag "L" with one sound signal and announcing the change verbally.

5. SIGNALS MADE ASHORE

- 5.1. Signals made ashore will be displayed from the club flag pole.
- 5.2. When flag "AP" is displayed ashore, "1 minute" is replaced with "not less than 30 minutes." This changes RRS race signal AP.

6. SCHEDULE

- | | | | |
|------|----------|--------------|---|
| 6.1. | Saturday | 9:30 – 10:30 | Check-in |
| | | 10:45 | Welcome & Competitors' meeting |
| | | 12:00 | Warning signal for 1 st race. Other races to follow. |
| | | 5:00-8:00 | Local Pie on-site for dinner purchase (cash only) |
| 6.2. | Sunday | 11:00 | Warning signal for 1 st race. Other races to follow. |
| 6.3. | | | There is an unlimited number of races scheduled. |

- 6.4. On Sunday no warning signal will be given after 3:00.
- 6.5. Awards will follow racing.

7. CLASS FLAGS

- 7.1. Sunfish Sunfish Class Flag
- 7.2. O'Pen Skiff O'Pen Skiff Class Flag
- 7.3. Optimist RWB Optimist Class Flag
- 7.4. Optimist Green Solid Green Flag

8. RACING AREA

The racing area is on the Beaufort River between the McTeer Bridge and the marshes in front of downtown Beaufort.

9. COURSE

- 9.1. The course will be a trapezoid with the start/finish line in the windward leg.
- 9.2. The diagram shows the course.
- 9.3. The start/finish line shall not be crossed except to start or finish.
- 9.4. The long weather mark is for the Sunfish, Optimist RWB class and the O'Pen Skiff class. The short weather mark is for the Optimist Green class.

10. MARKS

- 10.1. Marks 1 & 4 will be Yellow Tetrahedrons
- 10.2. Marks 2 & 3 will be Orange Cylinders.
- 10.3. Mark 1G will be a Green Cylinder.
- 10.4. The starting mark will be a pin end buoy with staff displaying an orange flag.
- 10.5. The finish mark will be a pin end buoy with staff displaying a blue flag.
- 10.6. If required, a change mark will be an orange or white hippity-hop style ball.

11. THE START

- 11.1. Races will be started by using Appendix U (2021-2024 RRS) *Audible-Signal Racing System* with the warning signal made 3 minutes before the starting signal.
- 11.2. The start line will be between the pin end starting mark and an orange flag on the signal boat.
- 11.3. Boats whose warning signal has not been made shall avoid the start area during the start sequence for other classes.
- 11.4. A boat that does not start within 3 minutes after her start signal will be scored Did Not Start (DNS) without a hearing. This changes RRS A4 and A5.
- 11.5. The order of starts for the first race of the day will be 1) Sunfish; 2) O'Pen Skiff; 3) Optimist Red, White and Blue; and 4) Optimist Green.

12. THE FINISH

- 12.1. The finish line will be between a blue flag on the signal boat and the finish mark displaying a blue flag on the opposite side of the signal boat from the Start line.
- 12.2. After finishing a boat shall clear and remain clear of the start/finish area until their next warning.

13. TIME LIMITS

- 13.1. The time limit for the first boat in a race to sail the course and finish is 50 minutes.

- 13.2. Boats failing to finish within 15 minutes after the first boat in a race sails the course and finishes will be scored Time Limit Expired (TLE) without a hearing. This changes RRS 35, 63.1, A4 and A5.

14. PROTESTS AND REQUESTS FOR REDRESS

- 14.1. A boat intending to protest another boat in the racing area during a race shall notify the other boat immediately of her intent, including the word “protest”.
- 14.2. A boat intending to protest another boat shall notify the race committee signal boat as soon as possible after finishing, stating the sail number of the protested boat.
- 14.3. Protest forms are available at the official notice board and shall be submitted there.
- 14.4. The protest time limit is 45 minutes after the race committee signal boat docks. The protest time limit (filing deadline) will be posted on the official notice board as soon as practicable.

15. SCORING

- 15.1. The Low Point Scoring System of RRS Appendix A will apply as revised below.
- 15.2. The number of boats entered in the regatta will be defined as the number of registered boats which subsequently completed competitor check-in at the regatta venue. This change is added to the first sentence to RRS A2 and A4.
- 15.3. One completed race shall constitute a regatta.
- 15.4. When five (5) or fewer races have been completed a boat’s series score will be the total of her races; when six (6) or more races are completed a boat’s worst score will be discarded. This changes RRS A2.1.

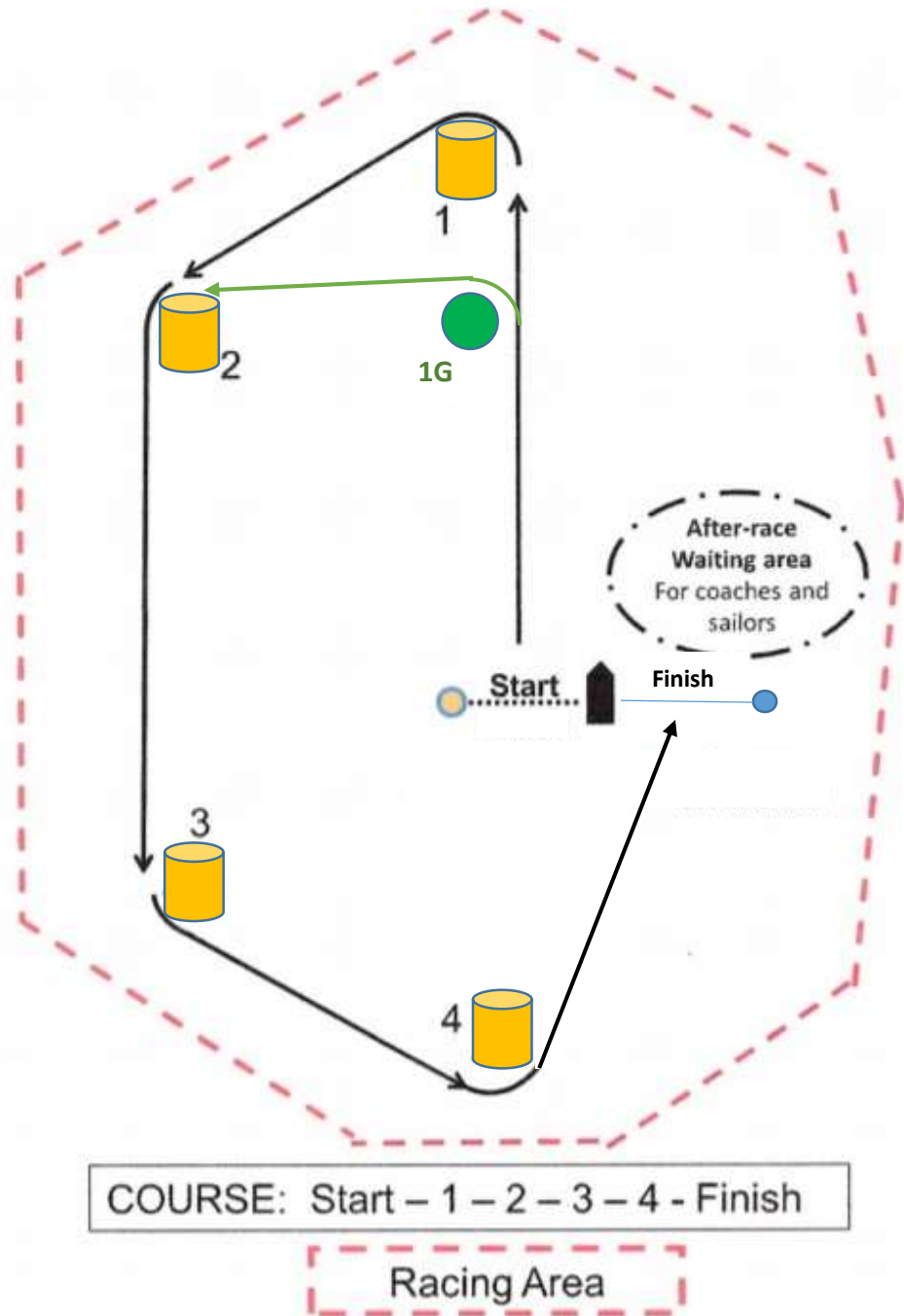
16. [DP][NP] SAFETY

- 16.1. A boat that retires from a race or leaves the racing area between races shall notify the race committee as soon as possible.
- 16.2. A personal flotation device shall be worn by all competitors when away from shore.
- 16.3. Closed toe shoes shall be worn while launching and retrieving boats.
- 16.4. The sail number of the boat must be the same as on the entry form.
- 16.5. Competitors shall check in with the race committee upon arriving at the course each day by hailing their sail number and name loudly.
- 16.6. Dollies are not to be left on the shore due to tide.
- 16.7. The Race Committee, for breaches of SI 15.1 – 15.4, may assign a penalty which may be as severe as Disqualification That Is Not Excludable (DNE) to a boat without a hearing for the first race of the day in which the breach occurred. This changes RRS A5.

17. EQUIPMENT

- 17.1. Equipment (including sails) may be substituted only with permission of the Race Committee.

Simple Trapezoid Course



Note: Diagram not to scale. Mark colors and shapes are illustrative only.

PLUFF MUD CHAMPIONSHIP

SEPTEMBER 11-12, 2021

The Beaufort Yacht & Sailing Club

SAILING INSTRUCTIONS

FOR THE ILCA and 420 COURSE

1. RULES

- 1.1 This regatta will be governed by the rules as defined in *The Racing Rules of Sailing for 2021-2024*
- 1.2 Coaches, parents and competitors are expected to have read and understand the Junior Code of Ethics, which will be enforced.
- 1.3 RRS 2021-2024 Appendix V shall apply as the Alternative Penalty System.

2. NOTICES TO COMPETITORS

Notices to competitors will be posted on the official notice board located on the screen porch of the clubhouse.

3. [DP][NP] Covid-19 Safety

- 3.1 Registered competitors who, at any time between September 4 and 11, experience symptoms of corona virus Covid-19 shall not race. The entry fee paid by such competitors will be refunded following their withdrawal from the regatta.

4. CHANGES TO THE SAILING INSTRUCTIONS

- 4.1 On-shore changes to the sailing instructions will be posted within 15 minutes of the close of the competitors' meeting on Saturday and by 9:30 on Sunday.
- 4.2 Changes to the schedule will be posted by 7:00 pm on the day before the change is in effect.
- 4.3 On-the-water changes to the sailing instructions will be made before the warning signal of a race by hoisting code flag "L" with one sound signal and announcing the change verbally.

5. SIGNALS MADE ASHORE

- 5.1 Signals made ashore will be displayed from the club flag pole.
- 5.2 When flag "AP" is displayed ashore, "1 minute" is replaced with "not less than 30 minutes." This changes RRS race signal AP.

6. SCHEDULE:

- 6.1 Saturday
 - 9:30-10:30 Check-in
 - 10:45 Welcome & Competitors' Meeting
 - 12:00 Warning signal for 1st race. Other races to follow.
 - 5:00-8:00 Local Pie on-site for dinner purchase (cash only)
- 6.2 Sunday
 - 11:00 Warning signal for 1st race. Other races to follow

- 6.3 There is an unlimited number of races scheduled.
- 6.4 On Sunday no warning signal will be given after 3:00.
- 6.5 Awards will follow racing.

7. CLASS FLAGS

- 7.1 420 – 420 Class Flag
- 7.2 ILCA 6 – Y-Flyer Flag (see at Competitors Meeting)
- 7.3 ILCA 4 – Laser Class Flag

8. RACING AREA

The racing area is on the Beaufort River between the McTeer Bridge and the marshes in front of downtown Beaufort.

9. COURSES

- 9.1 The course for the ILCA and 420s will be windward/leeward. The leeward mark will be a single mark located to windward of the start/finish line and **IS** a mark of the course on the final downwind leg.
- 9.2 The course will be designated with a W/L and a number indicating the number of complete laps to be sailed before the final reach to the finish.
- 9.3 The diagram shows the course.

10. MARKS

- 10.1 Marks for the ILCA and 420s will be **Orange Cylinders**.
- 10.2 The starting mark will be a pin end buoy with staff displaying an orange flag.
- 10.3 The finish mark will be a pin end buoy with staff displaying a blue flag.
- 10.4 If required, a change mark will be an orange or white hippity-hop style ball.

11. THE START

- 11.1 Races will be started under Racing Rules of Sailing Rule 26 (5-minute sequence with visual and audible signals)
- 11.2 The start line will be between the starting mark and an orange flag on the signal boat.
- 11.3 Boats whose warning signal has not been made shall avoid the start area during the start sequence for other classes.
- 11.4 A boat that does not start within 5 minutes after her start signal will be scored Did Not Start (DNS) without a hearing. This changes RRS A4 and A5.
- 11.5 The intended order of starts for the first race of the day will be 1) 420s, 2) ILCA 6, 3) ILCA 4.

12. THE FINISH

- 12.1 The finish line will be between a blue flag on the signal boat and the finish mark displaying a blue flag on the opposite side of the signal boat from the Start line.
- 12.2 After finishing a boat shall clear and remain clear of the start/finish area until their next warning.

13. TIME LIMITS

- 13.1 The time limit for the first boat in a race to sail the course and finish is 50 minutes.

- 13.2 Boats failing to finish within 15 minutes after the first boat in a race sails the course and finishes will be scored Tie Limit Expired (TLE) without a hearing. This changes RRS 35, 63.1, A4 and A5.

14. PROTESTS AND REQUESTS FOR REDRESS

- 14.1 A boat intending to protest another boat in the racing area during a race shall notify the other boat immediately of her intent, including the word “protest”.
- 14.2 A boat intending to protest another boat shall notify the race committee signal boat as soon as possible after finishing, stating the sail number of the protested boat.
- 14.3 Protest forms are available at the official notice board and shall be submitted there.
- 14.4 The protest time limit is 45 minutes after the race committee signal boat docks. The protest time limit (filing deadline) will be posted on the official notice board as soon as practicable.

15. SCORING

- 15.1 The Low Point Scoring System of RRS Appendix A will apply as revised below.
- 15.2 The number of boats entered in the regatta will be defined as the number of registered boats which subsequently completed competitor Check-In at the regatta venue. This change is added to the first sentence to RRS A2 and A4.
- 15.3 One completed race shall constitute a regatta.
- 15.4 When five (5) or fewer races have been completed a boat’s series score will be the total of her race scores; when six (6) or more races are completed a boat’s worst score will be discarded. This changes RRS A2.1.

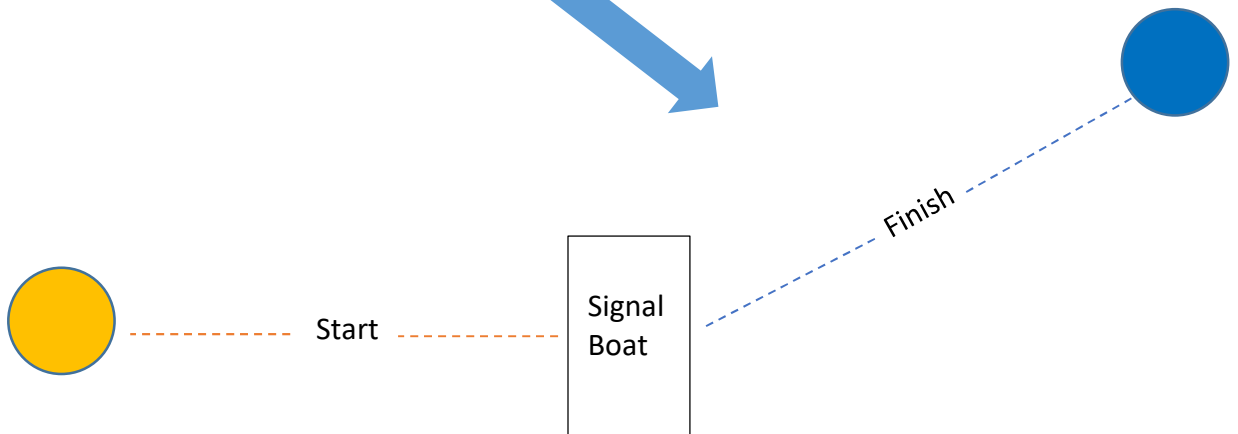
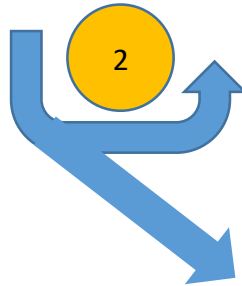
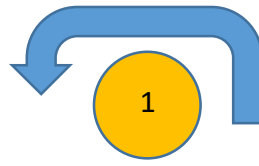
16. [DP][NP] SAFETY

- 16.1 A boat that retires from a race or leaves the racing area between races shall notify the race committee as soon as possible.
- 16.2 A personal flotation device shall be worn by all competitors when away from shore.
- 16.3 Closed toe shoes shall be worn while launching and retrieving boats.
- 16.4 The sail number of the boat must be the same as on the entry form.
- 16.5 Competitors shall check in with the race committee upon arriving at the course each day by hailing their sail number and name loudly.
- 16.6 The Race Committee, for breaches of SI 15.1 – 15.4, may assign a penalty which may include Disqualification That Is Not Excludable (DNE) to a boat without a hearing for the first race of the day in which the breach occurred. This changes RRS A5.
- 16.7 Dollies are not to be left on the shore due to tide.

17. EQUIPMENT

- 17.1 Equipment (including sails) may be substituted only with written permission of the race committee.

ILCA & 420 Course



Note: Diagram not to scale. Mark colors and shapes are illustrative only.