



INCLUDES
AMENDMENT No. 1

DAY ON MONTEREY BAY REGATTA

BENEFITTING

BIG BROTHERS BIG SISTERS OF SANTA CRUZ COUNTY

Sunday, August 11, 2021

Sailing Instructions

1. Rules

- 1.1 The regatta will be governed by the rules as defined in *The Racing Rules of Sailing*.
- 1.2 Monterey Bay PHRF rules and current ratings will apply. One-design participants that do not have a valid Monterey Bay PHRF certificate will be assigned a PHRF rating by the Race Committee.
- 1.3 The first sentence of RRS 40 is changed so that competitors shall comply with the obligations of RRS 40 (wear a PFD) whether or not the Race Committee displays flag Y with one sound.

2. Notices to Competitors

- 2.1. Notices to competitors will be posted on-line at: [2021 Big Brothers Big Sisters Regatta : Santa Cruz Yacht Club \(regattanetwork.com\)](http://2021BigBrothersBigSistersRegatta.com)
- 2.2. On the water, the Race Committee may use VHF Channel 68 for communication.

3. Changes to Sailing Instructions

- 3.1 Any change to these sailing instructions will be posted by 2000 hours the day before racing or 1100 hours on race day at [2021 Big Brothers Big Sisters Regatta : Santa Cruz Yacht Club \(regattanetwork.com\)](http://2021BigBrothersBigSistersRegatta.com)

4. Signals Made Ashore

- 4.1. Signals made ashore will be displayed from the SCYC Clubhouse flagpole.
- 4.2. When flag AP is displayed ashore, '1 minute' is replaced with 'not less than 60 minutes' in the race signal AP.

5. Schedule and Check-in

- 5.1 A Competitor Briefing will be held outside the Regatta Shed at 11:30 on race day. All skippers are encouraged to attend to verify rating of competitor's yacht.
- 5.2 There is one race scheduled for all competitors sailing Course B or Course D as specified in 8.2 and 8.3 below.
- 5.3 The Warning Signal for the start of the timing sequence will be at 12:55 for a 13:00 start of the timing sequence
- 5.4 The time limit of the race is 15:30 hrs. Yachts finishing after the time limit will be scored TLE (Time Limit Expired).
- 5.5 Yachts shall check-in with the Race Committee by hailing or by radio on VHF 68 prior to the Warning Signal.

6. Divisions

Division 1: Yachts rated PHRF 99 AND LOWER

Division 2: Yachts rated PHRF 102 AND HIGHER

Division 3: Jib and Main

Division 5: Corporate entries (in addition to other Divisions)

Division 6: Multihulls

7. Class Flag

7.1 The class flag will be code Flag F.

8. Marks and the Course

8.1. Addendum A shows the courses, a description of each mark, and the rounding order for each mark.

8.2 Division 1 and Division 6 yachts shall sail **COURSE D**

8.3 Division 2 and Division 3 yachts shall sail **COURSE B**

9. The Start

9.1 The starting line will be between a staff displaying an orange flag on the Signal Vessel and the S/F mark.

9.2. This is a reverse-handicap race. Boats will start in reverse order of their PHRF handicap rating with the slower rated boats starting at specified times ahead of faster rated boats.

9.3 The Adjusted Starting Time for each boat is shown on Addendum B-1 for **COURSE B** and on Addendum B-2 for **COURSE D**. This will serve as a boat's start time which changes RRS A3.

9.4 The starting signal will be in accordance with RRS 26. Thereafter, no additional starting signals will be given. This changes RRS 26. The first sentence of RRS 29.1 is changed to read: When at a boat's Adjusted Start Time any part of her hull, crew or equipment is on the course side of the starting line or she must comply with RRS 30.1. The Race Committee will promptly display flag X with one sound. The second sentence is changed so that the flag remains displayed for three minutes or 10 seconds before any later Adjusted Starting Time.

9.5 All start times will be based on the official Signal Vessel clock, and competitors are encouraged to synchronize their timepieces with that clock before leaving the dock. The Race Committee may periodically announce the clock time on the VHF.

9.6 The Race Committee may hail, on VHF, the sail number or other identifying feature of any Yacht that was on the course side of the starting line at her Adjusted Starting Time. The failure of a hail, the failure of a boat to hear a hail, or the order of the hail(s) shall not be grounds for a boat to request redress. This changes RRS 62.1

9.7 The preamble of Part 4 is changed so that RRS 41, 42, 44, 45, 47, 49, 51 and 52 only begin to apply to a boat four minutes prior to a boat's Adjusted Starting Time.

9.8 Boats in Division 1 and 2 may elect to sail in Division 3 without spinnaker and may add 12 sec/mile to their PHRF rating. The Race Committee must be informed at the Competitor Briefing or by radio at check-in on VHF 68 before the First Warning

10. Postponements

- 10.1. If the starting signal is postponed, the postponement will be in full minute increments. The Race Committee shall announce the new time for the Warning Signal on VHF Channel 68. A boat shall adjust its Adjusted Starting Time to the new Starting Time..
- 10.2. The Race Committee may periodically announce the number of minutes of postponement on the VHF.

11. Finish

- 11.1. The finishing line will be between a staff displaying an orange flag on the Signal Vessel and the SF mark.

12. Penalty System

- 12.1 RRS 44.1 is changed so that the Two-Turns Penalty is replaced by the One-Turn Penalty.

13. Protests and Requests for Redress

- 13.1. Protest forms are available at the SCYC Regatta Shed located in the dry storage area and the SCYC Club House Bar. Protests and requests for redress or reopening shall be delivered to either of these locations, within the appropriate time limit.
- 13.2. The protest time limit is sixty minutes after the Signal Vessel has arrived at her berth in Santa Cruz Harbor. The protest filing time limit will be posted on the SCYC Regatta Shed.
- 13.3. Notices will be posted no later than thirty minutes after the protest filing time limit to inform competitors of hearings in which they are parties.

14. Scoring

- 14.1 Scoring will be determined for each Division by the order of the finish of each boat. This changes RRS A3.

Addendum A

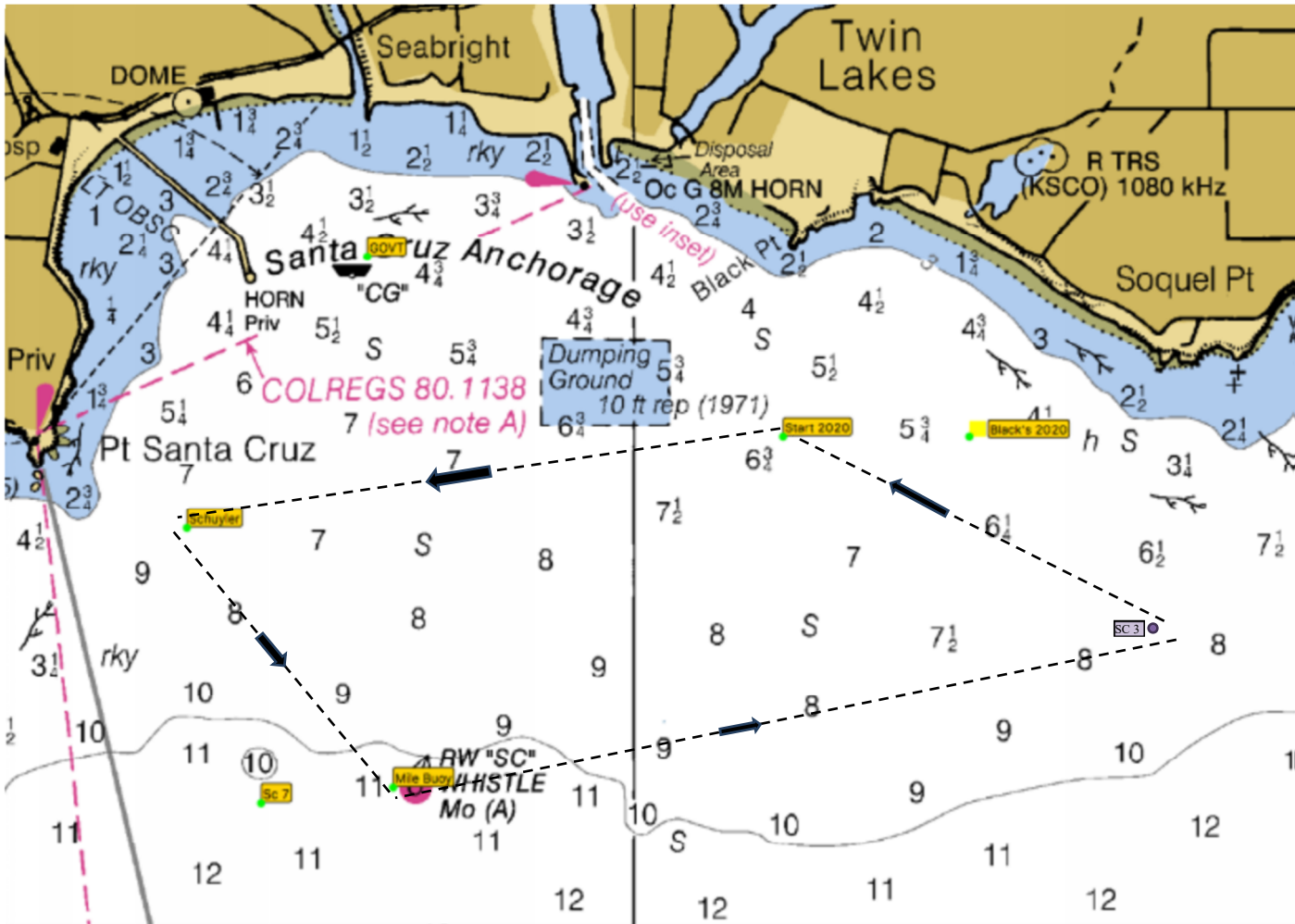


Chart indicating relative positions of marks. Not to be used for navigation.

Marks:

SF is the Start and Finish mark

Schuyler, Mile, and SC3 marks listed in the table below are rounding marks.

All marks are rounded to port except the downwind finish for Course D.

Mark Name	Mark Location	Mark Description
Schuyler (Wharf)	36°56.87'N – 122°01.26'W	Yellow Ball "Schuyler"
Mile	36°56.35'N – 122°00.58'W	Large RW "SC" WHISTLE buoy
SC3	36°56.50'N – 121°58.02'W	Yellow cylinder marked "SC3"
SF Mark	36°57.06'N – 121°59.63'W	Yellow Ball

Courses:

Code flag B	SF - Schuyler - Mile - SC3 - SF	5.6 NM
Code flag D	SF - Schuyler - Mile - SC3 - SF Gate - Schuyler -SF	8.2 NM

"SF Gate" is a gate formed by SF Mark and the Signal Vessel.

ADDENDUM B-1 - STARTING TIMES

COURSE B

Div. 2 (PHRF 102 and more) and Div. 3 (Jib and Main)

Length of course: **5.60** n.mi.

<u>P.H.R.F.</u>	<u>START TIME</u>	<u>P.H.R.F.</u>	<u>START TIME</u>
300	0:00:00	198	0:09:31
297	0:00:17	195	0:09:48
294	0:00:34	192	0:10:05
291	0:00:50	189	0:10:22
288	0:01:07	186	0:10:38
285	0:01:24	183	0:10:55
282	0:01:41	180	0:11:12
279	0:01:58	177	0:11:29
276	0:02:14	174	0:11:46
273	0:02:31	171	0:12:02
270	0:02:48	168	0:12:19
267	0:03:05	165	0:12:36
264	0:03:22	162	0:12:53
261	0:03:38	159	0:13:10
258	0:03:55	156	0:13:26
255	0:04:12	153	0:13:43
252	0:04:29	150	0:14:00
249	0:04:46	147	0:14:17
246	0:05:02	144	0:14:34
243	0:05:19	141	0:14:50
240	0:05:36	138	0:15:07
237	0:05:53	135	0:15:24
234	0:06:10	132	0:15:41
231	0:06:26	129	0:15:58
228	0:06:43	126	0:16:14
225	0:07:00	123	0:16:31
222	0:07:17	120	0:16:48
219	0:07:34	117	0:17:05
216	0:07:50	114	0:17:22
213	0:08:07	111	0:17:38
210	0:08:24	108	0:17:55
207	0:08:41	105	0:18:12
204	0:08:58	102	0:18:29
201	0:09:14	63	0:22:07

ADDENDUM B-2 - STARTING TIMES

COURSE D

Div. 1 (PHRF 99 and lower) and Div. 6 (Multihull)

Length of course: **8.20** n.mi.

<u>P.H.R.F.</u>	<u>START TIME</u>	<u>P.H.R.F.</u>	<u>START TIME</u>
99	0:20:00	-3	0:33:56
96	0:20:25	-6	0:34:21
93	0:20:49	-9	0:34:46
90	0:21:14	-12	0:35:10
87	0:21:38	-15	0:35:35
84	0:22:03	-18	0:35:59
81	0:22:28	-21	0:36:24
78	0:22:52	-24	0:36:49
75	0:23:17	-27	0:37:13
72	0:23:41	-30	0:37:38
69	0:24:06	-33	0:38:02
66	0:24:31	-36	0:38:27
63	0:24:55	-39	0:38:52
60	0:25:20	-42	0:39:16
57	0:25:44	-45	0:39:41
54	0:26:09	-48	0:40:05
51	0:26:34	-51	0:40:30
48	0:26:58	-54	0:40:55
45	0:27:23	-57	0:41:19
42	0:27:47	-60	0:41:44
39	0:28:12	-63	0:42:08
36	0:28:37	-66	0:42:33
33	0:29:01	-69	0:42:58
30	0:29:26	-72	0:43:22
27	0:29:50	-75	0:43:47
24	0:30:15	-78	0:44:11
21	0:30:40	-81	0:44:36
18	0:31:04	-84	0:45:01
15	0:31:29	-87	0:45:25
12	0:31:53	-90	0:45:50
9	0:32:18	-93	0:46:14
6	0:32:43	-96	0:46:39
3	0:33:07	-99	0:47:04
0	0:33:32	-102	0:47:28