

# Hyannis Yacht Club Youth Invitational

August 10<sup>th</sup> and 11<sup>th</sup>, 2021

## SAILING INSTRUCTIONS

### 1. RULES

1.1 The regatta shall be governed by the rules as defined in the Racing Rules of Sailing.

1.2 **RRS 1.1 *Helping Those in Danger*** applies to coach boats as well as competitors. All coach boats shall provide assistance to any competitor in distress or in the event of an emergency. Coach Boats are required to monitor the VHF channel of the Race Circle they are on.

1.3 As a condition of entry, each owner, skipper, and participating crew member agrees to comply with all Federal, State, County, and Hyannis Yacht Club guidelines as they apply to social separation while ashore.

1.4 **Hyannis Shipping Channel Rule** *These Special Instructions for leaving and returning to the Hyannis Yacht Club apply to the C420 and Optimist Classes. Race Committee Patrol Boats will be present to ensure boats are conforming to these requirements.*

- a. **AT ABSOLUTELY NO POINT ARE THESE COMPETITORS TO SAIL EAST OF OR IN THE HYANNIS HARBOR CHANNEL.**
- b. **Leaving the harbor, all boats must remain west (right) of the Hyannis Harbor Channel.**
- c. **Returning to the harbor, all boats shall sail to the west (left) of the Hyannis Harbor Channel.**
- d. **In the vicinity of Dunbar Point there will be two (2) inflatable buoys set as a gate. BOATS SHALL NOT FLY SPINNAKERS AFTER PASSING THROUGH THE GATE WHEN RETURNING TO THE HARBOR.**
- e. **In the case of excess or commercial traffic in the channel area, Patrol Boats may direct competitors to remain in the area of the gate. Competitors shall remain in the gate area until directed to pass through.**
- f. **If coaches are towing any boat(s) through the channel, the sails must be lowered down.**
- g. **All Optimist Class boats sailing in Lewis Bay must be escorted across the channel before and after racing, by designated patrol boats and pass through a gate, marked by two inflatable buoys, located at the entrance of the fairway. They must announce their sail numbers to the Patrol Boat stationed at the gate.**
- h. **Failure to comply with this rule will subject the competitor to protest by the Race Committee. The Penalty for violating this rule is disqualification from the entire Regatta.**

### 2. NOTICES TO COMPETITORS:

Official Notices to competitors will be posted on the Official Notice Board located outside the club house on the windows located on the south end of the patio. It is the responsibility of each participant to check the Official Notice Board for information.

### 3. CHANGES TO THE SAILING INSTRUCTIONS:

Any changes to the Sailing Instructions will be posted on the Official Notice Board by 0900 on August 10, 2021.

#### 4. SIGNALS MADE ASHORE

The Race Committee shall make one (1) sound signal signifying the Harbor Start at 0930. Signals made ashore will be displayed from the flagpole on the dock. If a postponement is signaled ashore, the warning signal will be made not less than 30 minutes after AP is lowered.

#### 5. SCHEDULE

Tuesday, August 10, 2021

Check-in	0800 – 0900
Skippers Meeting all Classes	HYC Patio 0900
Skippers Meeting: Opti Green	HYC Beach 0930
Harbor Start: 420s, Opti Red, Blue, and White, O'PEN Skiffs	0930
Harbor Start: Opti Green	1000
Warning Signal: Opti, Red, Blue, and White, O'PEN Skiffs	1000
Warning Signal: 420s and Opti Green	1030
Awards for O'PEN Skiffs: As soon as possible after the conclusion of racing	

Wednesday, August 11, 2021

Check-in	0800 – 0900
Harbor Start: 420s, Opti Red, Blue, and White	0930
Harbor Start: Opti Green	1000
Warning Signal: Opti, Red, Blue, and White	1000
Warning Signal: 420s and Opti Green	1030
No Warning Signal after 2:30pm	
Awards: As soon as possible after the conclusion of racing	

#### 6. VENUE AND RACING AREAS

Class	Racing Area
Opti Green Fleet	South side of Lewis Bay
Championship Fleet	North side of Lewis Bay
420 Class	South of the Hyannis Port jetty on Nantucket Sound
O'PEN Skiffs	Kalmus Beach west-side of Lewis Bay south-west of HYC

#### 7. COURSES AND MARKS

- 7.1 All marks will be inflatable marks
- 7.2 Courses and course locations see Appendix #1

#### 8. THE START

- 8.1 The starting lines will be between a staff displaying an orange flag on the Committee Boat and either an inflatable starting mark or a boat displaying an orange flag.
- 8.2 There may be a small "keep off" buoy attached to the stern of the Committee Boat. This buoy shall be considered a part of the Committee Boat. Boats shall not touch this buoy or pass between it and the Committee Boat.
- 8.3 **Opti Green Fleet:** Starting Procedure will be **RRS Appendix U**, Audible-System Racing System including the use of the "I", "Z", or Black Flag.
- 8.4 **Optimist Championship Fleet, O'PEN Skiffs and 420s:** Starting Procedure will be **RRS 26**.
- 8.5 The race committee will hail OCS boats on a "best effort" basis. Failure to make a hail or to time it accurately will not be grounds for a request for redress. This changes **RSS 62.1(a)**.

8.6 As many races as practical will be run during this regatta. Subsequent races will be held as soon as possible after the end of the previous race.

## **9. THE FINISH**

The finish lines will be between a staff displaying a blue flag and an inflatable mark.

## **10. TIME LIMIT**

10.1 Time limit for all classes: The time limit for the first boat to finish shall be sixty (60) minutes from the start.

10.2 If no boat finishes within sixty (60) minutes from the start time, the race shall be abandoned. Boats failing to finish within thirty (30) minutes of the first boat to comply with **RRS 28** and finish will be scored Time Limited Expired (TLE) without a hearing. These boats will be scored points equal to the number of boats that have sailed the course and finished within the 30-minute window plus three (3) points

## **11. PROTESTS AND REQUESTS FOR REDRESS**

All sailors filing a protest must notify the Race Committee upon finishing prior to the start of the next race or upon crossing the finish line of the last race of the day. Protests shall be delivered to the Registration Desk within 45 minutes after the Race Committee finish boat docks. The protest time limit and a list of protests received will be posted on the Official Notice Board. This shall constitute the Notice of Hearings. Skippers so notified shall make themselves available to the Protest Committee. Hearings will be held at the yacht club as soon as possible after racing.

## **12. SCORING**

12.1 A boat's scores will exclude her worst race only if five or more races are completed.

12.2 One (1) race constitutes a series.

## **13. SAFETY AND EQUIPMENT**

13.1 All Competitors shall wear a personal flotation device approved by the United States Coast Guard Type III non-inflatable life jacket all times while afloat, except for brief times while adjusting clothing.

13.2 The Race Committee may use VHF radio for courtesy communications to boats in all classes.

13.3 All coaches and support boats are required to carry an energized VHF radio and monitor the Race Committee channel for the racing area circle they are on for use in emergencies.

## **14. COACHING**

14.1 Except for the Opti Green Fleet, any coach/observer who violates **RRS 41** by providing outside assistance (coaching) to a competitor while racing will subject the competitor to protest and disqualification. The race committee and judges will enforce this sailing instruction.

14.2 On the water coaching is allowed in the lower half of the Opti Green Fleet.

14.3 These restrictions do not apply to safety issues. In the event competitors require assistance, all coaches in the racing area are expected to render assistance at the direction of the PRO.

## **15. PRIZES**

Prizes will be awarded to first through third place finishers in Red, Blue, White and overall Optimists, O'PEN Skiffs and 420s. Recognition awards will be given to participants in the Opti Green fleet. Prize(s) for Sportsmanship may be awarded.

## **16. DISPOSAL OF TRASH**

This event is designated a Clean Regatta by the Sailors for the Sea organization. By entering all competitors agree to abide by the Clean Regatta Certification Level requirements. Boats observed discharging trash into the water will either be disqualified from all races or be subject to other suitable disciplinary action, or both.

## **17. RESPONSIBILITY & LIABILITY**

Specific attention is directed to the following Fundamental Rules:

**RRS 1.1 - Helping Those in Danger.** A boat or competitor shall give all possible help to any, person or vessel in danger.




**RRS 3 - Decision to Race.** The responsibility for a boat's decision to participate in a race or to continue racing is hers alone.

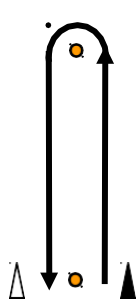
Sailing is an activity that has an inherent risk of damage and injury. Competitors in these events are participating entirely at their own risk. The race organizers (Organizing Authority, race committee, protest committee, host club, sponsors, or any other organization or official) will not be responsible for damage to any boat or other property or the injury to any competitor, including death, sustained as a result of participation in this event. By participating in these events, each competitor agrees to release the race organizers from any and all liability associated with such competitor's participation, to the fullest extent permitted by law.

## **18. MEDIA**

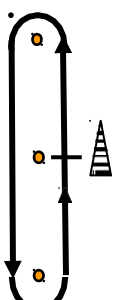
By participating in this Regatta, each competitor grants to the Organizing Authority the right in perpetuity to make, use and show, from time to time at their discretion, any photographs, motion pictures and live, taped or filmed or other reproductions of him or her made during the period of the Regatta without compensation.

# Appendix # 1

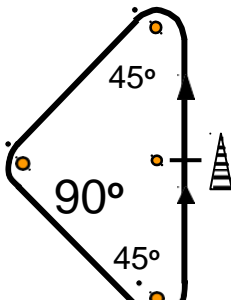
Start Boat =   
 Finish Boat =   
 Start-Finish Boat = 



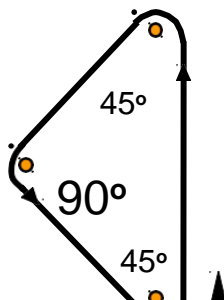
**W**



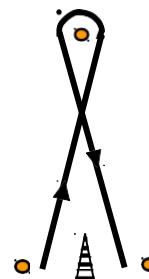
**D**



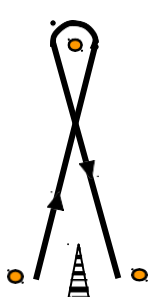
**M**



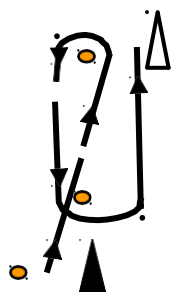
**I**



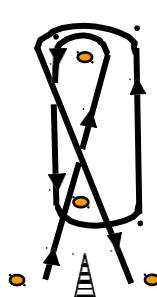
**BC**



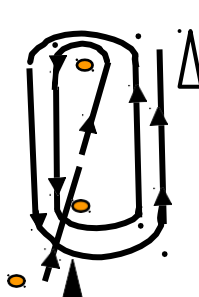
**C2**



**C3**



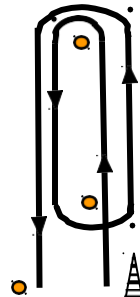
**C4**



**C5**

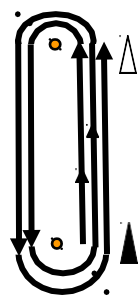


**J**

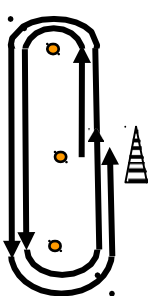


**L**

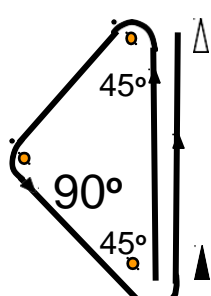
Courses W, D, M, J, L etc. may be modified by adding additional legs, additional times around the entire courses or a combination thereof. When one of these courses is modified it will be posted with the number times the basic course will be sailed. See examples W2½, D2 and T1-1/3 below.



**W2½**



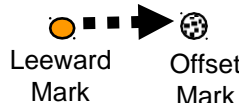
**D2**



**T1½**

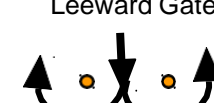


**Offset Marks**  
May be used in any course



Windward Gate

**Gates**  
May be used in any course



Leeward Gate



