

Spud Cup 2021
Hosted by Sandpoint Sailing Association
Windbag Marina – September 4 – 5, 2021

Sailing Instructions

1. RULES

- 1.1 This regatta will be governed by the rules as defined in the 2021 - 2024 Racing Rules of Sailing (RRS). Class rules apply to one-design fleets.
- 1.2 Changes to the rules may be noted elsewhere in the Notice of Race or Sailing Instructions.

2. NOTICES TO COMPETITORS

- 2.1 Notices to competitors will be posted at the official notice board located at Fred's Deck.
- 2.2 The race committee may provide unofficial communication, which is communication not governed by the rules, at any time by hail or over VHF channel 72. A request for redress may not be based on any aspect of unofficial communication, including content, timeliness, or failure to hear. This changes RRS 62.1(a).
- 2.3 The preferred VHF radio channel will be 72.

3. CHANGES TO SAILING INSTRUCTIONS

- 3.1 Changes to the Sailing Instructions will be posted one half hour prior to racing at the official notice board located at Fred's Deck. An L flag will be flown with a number from Fred's Deck indicating the amendment number when there has been a change.

4. SCHEDULE

- 4.1 The schedule of racing is as follows:
Saturday, September 4:
8:30 am – Skippers Meeting at Fred's Deck
10:00 am – First signal
4 pm – No warning signals after this time
Sunday, September 5:
9:30 am – First signal
2:30 pm – No warning signals after this time
ASAP - Awards presentations will take place after racing and at the end of the protest time limit and protest hearings if any.

5. SIGNALS MADE ASHORE

- 5.1 Signals made ashore will be made on the Race Committee pontoon boat (or alternative) flag poles when the Race Committee boat is docked. Race Committee will attempt courtesy broadcasts on VHF radio channel 72.
- 5.2 In the event of an on-shore postponement, no starting signal will be made earlier than thirty (30) minutes following the lowering of the signal flag. This changes "Race Signals – AP and AP over H".

6. FLEETS

- 6.1 J 24, Capri 25, Thistle and handicap fleets will be determined by number and type of boats registered.
- 6.2 PHRF fleet assignments will be announced at the Skippers Meeting prior to racing on Saturday.
- 6.3 Additional one design fleets may be added based on quantity and types of boats. Additional fleets and their fleet flag will be announced as the Skippers Meeting prior to racing on Saturday.

7. FLEET FLAGS

- 7.1 Fleet flags will be:

Fleet	Flag
Long Distance	Code Flag #1
Thistle	Thistle Class Flag
J/24	J24 Class Flag
Capri 25	Code Flag #2
A Fleet	Code Flag #3
B Fleet	Code Flag #2

8. RACE COMMITTEE

- 8.1 The Race Committee boat shall be the SSA pontoon boat or a designated alternative. The Race Committee boat shall be the boat displaying the orange flag at start. An alternate Race Committee boat (Cal 22) shall be the boat displaying a green flag at finish. Additional support boats may be used to assist with course adjustments, race management and/or signaling competitors at the discretion of the Race Committee.

9. RACING AREA

9.1 Courses shall be bounded by the RR Bridge to the south, Kootenai Point to the north, and Contest Point to the South East, unless notified by the Race Committee. This is the area to the west of the red line (figure 1).

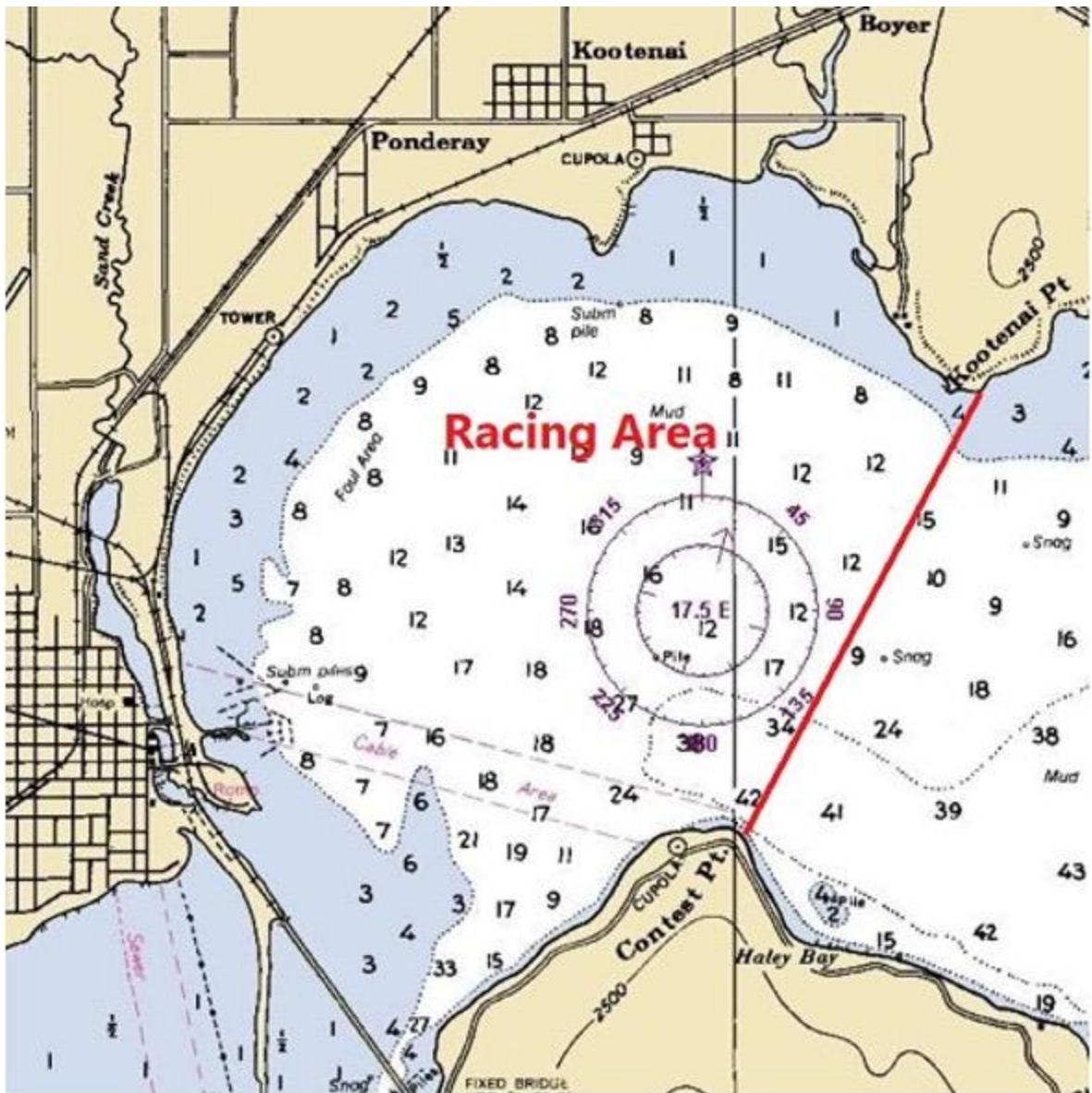


Fig. 1

10. COURSES

- 10.1 Courses will be as described below. See course map.
- 10.2 Marks A, J, L, Y shall be left to port.
- 10.3 Mark Z shall be a gate consisting of two marks. Boats shall sail between the gate marks from the direction of the previous mark. If one of the gate marks is missing, boats shall round the existing mark to port.
- 10.4 Fleets will be started in this order for the first race of each day:
 - Start 1: Long distance fleet (Saturday only)

Start 2: Thistle Fleet
Start 3: J 24 Fleet
Start 4: Capri 25 and B Fleets
Start 5: A Fleet

10.5 Subsequence Starts will begin once a fleet returns to the starting area.

10.6 The courses to be sailed are as follows:

Long Distance Fleet: Start, L (Long Distance Buoy off Fisherman's Island),
Finish

Long Distance Fleet shortened course: Start, L
(Long Distance Buoy off Fisherman's Island), Finish at the Mark boat

Thistle Fleet: Triangle - Red Flag: Start, A, J, Z, A, Z, Finish

Thistle Fleet: W/L - Yellow Flag: Start, A, Z, A, Z, Finish

Thistle Fleet Shortened course: Start, A, Z, Finish

All Other Fleets: Start, A, Z, A, Z, Finish

All Other Fleets Shortened course: Start, A, Z, Finish

10.7 The courses for any additional fleets will be announced at the Skippers Meeting.

10.8 After completing the first leg of the course, boats shall not sail through the start or finish line unless finishing. At these times the start and finish lines are obstructions. A boat that fails to observe this restriction may exonerate herself by taking a One-Turn Penalty as described in RRS 44.2. This changes RRS 44.1 but does not change RRS 44.1(b). A boat that fails to exonerate herself will be scored Did Not Finish (DNF) without a hearing. This changes RRS 63.1 and A5.

10.9 If a continuing (in excess of 5 minutes) wind shift of 30 degrees or more occurs after the start of a fleet, but before the first boat passes the first windward mark, the race may be abandoned and restarted. If the shift occurs after the first boat rounds the windward mark Race Committee at their sole discretion may:

1. Make course adjustments to accommodate the wind shift that could include moving the windward mark after the last boat has rounded but before the lead boat rounds the leeward mark.
2. Shorten the course.
3. Abandon the race.

Determination of time and amount of shift is in the sole judgment of a Race Committee representative on the weather mark boat and it is not subject to protest, appeal or hearing.

11. CHECK IN

11.1 Before the first warning signal of each day, all boats shall sail past the stern of the Race Committee boat displaying the orange flag on starboard tack and

check in by hailing their sail number. A boat has not satisfied this requirement until their sail number is orally acknowledged by the Race Committee.

- 11.2 Boats that do not check in according to SI 10.1 are subject to protest by the Race Committee. When the protest committee decides that a boat broke SI 10.1, the boat will be given a scoring penalty in her first race of that day equal to 20% of the number of boats entered in her class, calculated as provided in RRS 44.3(c).

12. THE START

- 12.1 The starting line will be between a staff displaying an orange flag on the Race Committee boat on the starboard end and the course side of the port-end starting mark.
- 12.2 If a boat is subject to RRS 29.1, Individual Recall, the Race Committee may attempt to hail her sail number directly and on VHF. This is an unofficial communication as in Sailing Instructions 2.2.
- 12.3 A boat starting later than five (5) minutes after her starting signal will be scored Did Not Start (DNS) without a hearing. This changes RRS A5.
- 12.4 A boat whose warning signal has not been made shall avoid the starting area when other boats are racing but have not yet started.

13. THE FINISH

- 13.1 The finishing line will be between a staff on the Race Committee boat displaying a green flag at the port end of the finish line and the finishing mark at the starboard end.
- 13.2 Race Committee may adjust the finishing marks to maintain the finishing line without regard to RRS 33.
- 13.3 Race Committee may designate an alternative finishing line for the Long Distance Fleet. The finishing line will be announced at the Skippers Meeting.

13. TIME LIMIT

- 13.1 If no boat sails the course and finishes within 90 minutes after her start, the race will be abandoned.
- 13.2 Boats failing to finish within 30 minutes after the first boat in her fleet sails the course and finishes, will be scored Did Not Finish (DNF) without a hearing. This changes RRS 35, A4 and A5.
- 13.2 Race Committee may designate a long distance course. Sailing Instruction 13.1 shall not apply to a long distance course.

14. PROTESTS AND PENALTIES

- 14.1 A boat intending to protest or request redress shall notify the Race Committee as soon as reasonably possible after retiring or finishing. This changes RRS 61.1(a).
- 14.2 Written protests and requests for redress shall be delivered within the protest time limit to the Race Committee.

- 14.3 The protest time limit will be 45 minutes after the end of the last race for each fleet each day or 30 minutes after the committee returns to the dock, whichever is later.
- 14.4 Hearings may commence at any time if parties are informed, present and prepared. A hearing time and place will be posted at the official notice board. The communication of the hearing shall be considered notice as required by 63.2.
- 14.5 A boat may take a One-Turn Penalty when she may have broken one or more rules of Part 2 or rule 31 in an incident while racing unless the incident occurred within the zone in which case a boat may take a Two-Turn Penalty. This changes RRS rule 44.1.

15. SCORING

- 15.1 Scoring will be done in accordance with RRS Appendix A.
- 15.2 One (1) race shall constitute a series.
- 15.3 Time on time handicapping will be used for PHRF fleets.
- 15.4 A boat that did not start, did not finish, retired or was disqualified shall be scored points for the finishing place one more than the number of boats that started and finished that race plus boats scored OCS. This changes RRS A4.2.
- 15.5 Thistle Pacific Coast Championship: The series scores for boats will be the total of all their race scores, with no races excluded. This changes RRS A2.1 and SI 15.1.

16. HAUL OUT RESTRICTIONS

- 16.1 All boats shall be afloat prior to 0900 hours PST on the day of the first scheduled race and shall not be hauled during the regatta, except with the written permission of the Race Committee Chairman.
- 16.2 The Thistle fleet may haul their boats when racing has concluded for the day. This changes SI 16.1.

17. RADIO COMMUNICATIONS

- 17.1 Except in an emergency, a boat shall neither make radio transmissions while racing, nor receive radio communications not available to all boats. This restriction also applies to mobile telephones.
- 17.2 The Race Committee may transmit via VHF radio information concerning safety, OCS boats, and general information to assist in the management of the event. Failure of the Race Committee to make any transmission, or a boat that is OCS to receive a Race Committee transmission, or the sequence in which boats are hailed OCS, will not be grounds for redress. This changes RRS 62.1(a).

18. REPLACEMENT OF CREW OR EQUIPMENT

- 18.1 Substitution of competitors will not be allowed without prior written approval of the Race Committee.

19. EQUIPMENT AND MEASUREMENT CHECKS

- 19.1 On the water, a boat can be instructed by a member of the Race Committee to proceed immediately to a designated area for inspection. Ashore, equipment may be inspected or measured at times specified in the class rules or the notice of race.

20. SAFETY

- 20.1 A boat that retires from a race shall notify the Race Committee as soon as possible.
- 20.2 Competitors participate in racing entirely at their own risk. See RRS 4, Decision to Race.
- 20.3 The organizing authority will not accept any liability for material damage or personal injury or death sustained prior to, in conjunction with, or after racing.