

MELBOURNE YACHT CLUB
**2021 Fall Youth Regatta and
Florida East Coast Youth Series #1**



SAILING INSTRUCTIONS
420, O'Pen Skiff, Laser and Optimist
Classes

September 19, 2021

1 RULES

1.1 The regatta will be governed by the rules as defined in *The Racing Rules of Sailing*.

1.2 The following rules are changed by these sailing instructions:

- a) Rule 26 is changed as follows; the warning signal will be made 3 minutes before the starting signal and the preparatory signal will be made 2 minutes before the starting signal.
- b) Rule 33 is changed so that the position of marks may be moved without signaling a course change provided that no boat is on the leg of the course to the mark.
- c) Rule 35 and Rule A5 are changed so that the race committee may finish boats, that do not finish within the finishing window, in their approximate position.
- d) Rule 40 is changed to require PFD's to be worn at all times on the water. If a competitor needs to add, remove, or adjust clothing, they shall do so only when in direct contact with a support or safety boat.
- e) Rule 44.1 is changed to require a one turn penalty when the incident takes place outside the zone of a mark
- f) Rule 62.2 has been changed so that the request for redress may only be made within the protest time limit except that a request for redress based on a protest committee decision shall be delivered no later than 30 minutes after the decision was posted.
- g) Rule A2.1 is changed so that no race scores will be discarded.
- h) Races will be scored for the Florida East Coast Youth Series according to the series NOR.

2 NOTICES TO COMPETITORS

2.1 Notices to competitors will be posted on the official notice board.

2.2 The official notice board is located either in the meeting/dining room at MYC or at the entrance to the MYC East Dock.

3 CHANGES TO SAILING INSTRUCTIONS

3.1 Any change to the sailing instructions ashore will be posted within 5 minutes of the completion of the competitors meeting.

3.2 Sailing instructions may be changed verbally on the water following the display of flag L with one sound.

4 SIGNALS MADE ASHORE

4.1 Signals made ashore will be displayed from the flag pole located in the launching area.

4.2 When flag AP is displayed ashore, '1 minute' is replaced with 'not less than 20 minutes' in the race signal AP.

5 SCHEDULE OF RACES

Sunday, September 19, 2021

Late registration and check in at MYC: 09:00-10:45

Competitors' Meeting: 11:00

First Race: 11:45

Last Warning of the day no later than 15:00

Awards Following Racing

6 CLASS FLAGS

6.1 The Class flags will be the class logo on a white or colored flag or as described at the Competitors meeting.

7 THE COURSES

7.1 The course diagram is shown on attachment A and/or B. Each race course designation will be displayed on a course board located at the stern of the RC Signal boat.

8 MARKS

8.1 The marks to be used are shown on the course diagrams.

9 THE START

9.1 Races will be started using RRS 26 as modified in SI 1.2(a).

9.2 The starting line will be between a staff displaying an orange flag on the race committee vessel and the course side of the starting mark.

9.3 Opti Silver and Gold Fleets may start together.

9.4 The RC may attempt to hail boats that are on the course side of the starting line. The timing and order of such hails, or the failure of a competitor to hear the hail, shall not be considered an improper action or omission of the RC under RRS 62.1 (a).

10 CHANGE OF THE NEXT LEG OF THE COURSE

10.1 It is the intent of the Race Committee not to move a mark of the course during the race. Marks may be squared up without signaling a Change of Course as long as no boats are on that leg.

11 THE FINISH

11.1 The finishing line will be between a staff displaying an blue flag on the race committee vessel and the course side of the finishing mark.

12 TIME LIMITS

12.1 The time limit for the first boat to sail the course and finish shall be 30 minutes.

12.2 The finishing window after the first boat has completed the race is 10 minutes.

12.3 Boats failing to finish within the Finishing Window will be finished in place at the discretion of the race committee. This changes RRS 35, and A4.

13 PROTESTS AND REQUESTS FOR REDRESS

13.1 Protest forms are available at the notice board. Protests and requests for redress or reopening shall be delivered there within the appropriate time limit.

13.2 For each class, the protest time limit is 30 minutes after the signal boat for her division docks.

13.3 Notices will be posted no later than 30 minutes after the protest time limit to inform competitors of hearings in which they are parties or named as witnesses and where the hearings will be held.

13.4 Notices of protests by the race committee, technical committee or protest committee will be posted to inform boats under RRS 61.1(b).

13.5 A request for redress based on a protest committee decision shall be delivered no later than 30 minutes after the decision was posted. This changes RRS 62.2.

14. SAFETY.

Boats shall check in with the Signal Boat prior to racing. A boat retiring from racing shall or their Coach shall notify a race Committee vessel before leaving the course, and/or immediately after arrival ashore. Further, a US Coast Guard approved personal floatation device shall be worn, properly fastened by both competitor and Coach personal at all times while launching, sailing or on-water coaching. Failure to comply with this rule may result in disqualification.

14.2 All Coach and Support Boat Drivers Must Be Tethered To An Automatic Engine Shutoff While Operating Their Boat At All Times.

15. COACHES -

15.1 Coaches will be allowed on the water and shall stay clear of racers after the warning signal except to assist a competitor in possible danger. Opti, BIC and 420 Coaches may coach the back half of their respective fleets.

15.2 Coaches shall monitor the RC radio frequency (72) and assist in the rescue of any competitor when requested to do so by the Race Committee.

DISCLAIMER OF LIABILITY: All competitors will be required to sign a waiver of liability as a condition of entry. Parents or guardians must sign for competitors under 21.

PRO – Patrick Lambert

patricklambert@bellsouth.net 321.261.4794

Race Chairman – Phil Spletter

pspletter@cfl.rr.com 321-514-2525

COURSE DIAGRAM A

Laser Full, Laser Radial, Laser 4-7, C-420

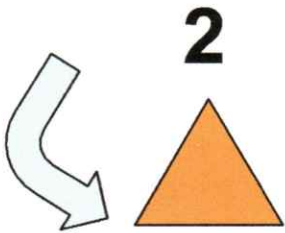
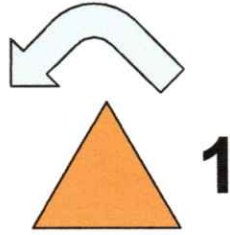
Course W-1: 1-3-Finish

Course W-2: 1-3-1-3-Finish

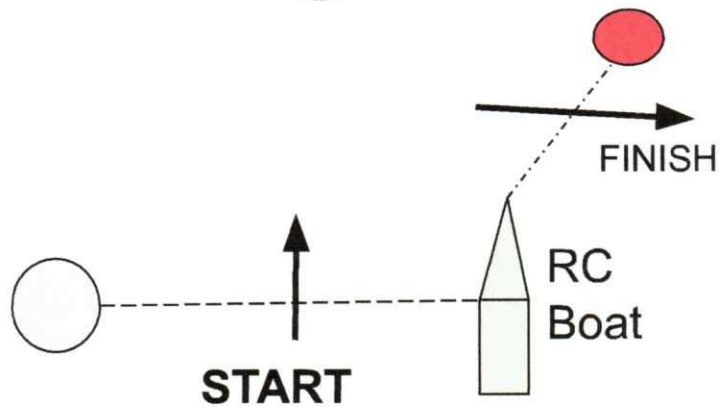
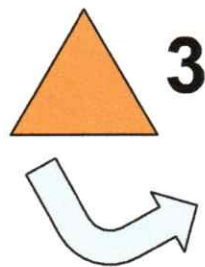
Course T-1 : 1-2-3-Finish

Course T-2 : 1-2-3-1-2-3-Finish

Course T-3 : 1-2-3-1-3-Finish



Not To Scale



Attachment B - Course Diagram
O'Pen Skiff and Optimist

Course R-1 : 1- 2- 3- Finish

Course R-2 : 1- 2- 3-1- 2- 3- Finish



Not To Scale

