



*Waikiki Yacht Club*  
1599 Ala Moana Blvd  
Honolulu, Hawaii, 96814  
808.995.4405 | [regatta@waikikiyachtclub.com](mailto:regatta@waikikiyachtclub.com)

**Sailing Instructions**  
**King Kamehameha Offshore**  
**McFaul Beach Fleet**  
**August 14, 2020**

**1. RULES:**

- 1.1. The regatta will be governed by the rules as defined in the Racing Rules of Sailing (RRS), the prescriptions of US SAILING, pertinent Class/Fleet Rules, by the Waikiki Yacht Club Standing Sailing Instructions, the Notice of Race and these Sailing Instructions.
- 1.2. The RRS are changed as follows:
  - 1.2.1. Rule 52 - The use of powered winches is authorized.
  - 1.2.2. Rule 55 is changed to allow the use of banding for safety purposes
  - 1.2.3. Rule 63.2 and 63.4 do not apply.

**2. NOTICES TO COMPETITORS:** Notices to competitors will be posted on the official notice board located in the WYC on the regatta board.

**3. CHANGES TO THE SAILING INSTRUCTIONS:** Any change to the sailing instructions will be posted before 0900 on the day it will take effect, except that any change to the schedule of races will be posted by 2000 on the day before it will take effect.

**4. SIGNALS MADE ASHORE:** Signals made ashore will be displayed from the WYC flagpole

**5. SCHEDULE OF RACING:**

- 5.1. The first warning will be at 1155 HST August 14, 2020. There will be one start for all classes.
- 5.2. Number of races: All fleets will have one distance race.

**6. CLASS FLAGS**

PH X – Pink with X  
PH A & B – Black with 1  
Cruising – Light Green with C  
Multi – Multi Class Flag

**7. RACING AREA:** The location of the racing area will be Mamala and Maunalua Bays.

**8. THE COURSE:**

Start – DH buoy to Port – Race Committee Mark Boat to Port - DH buoy to Starboard – Finish

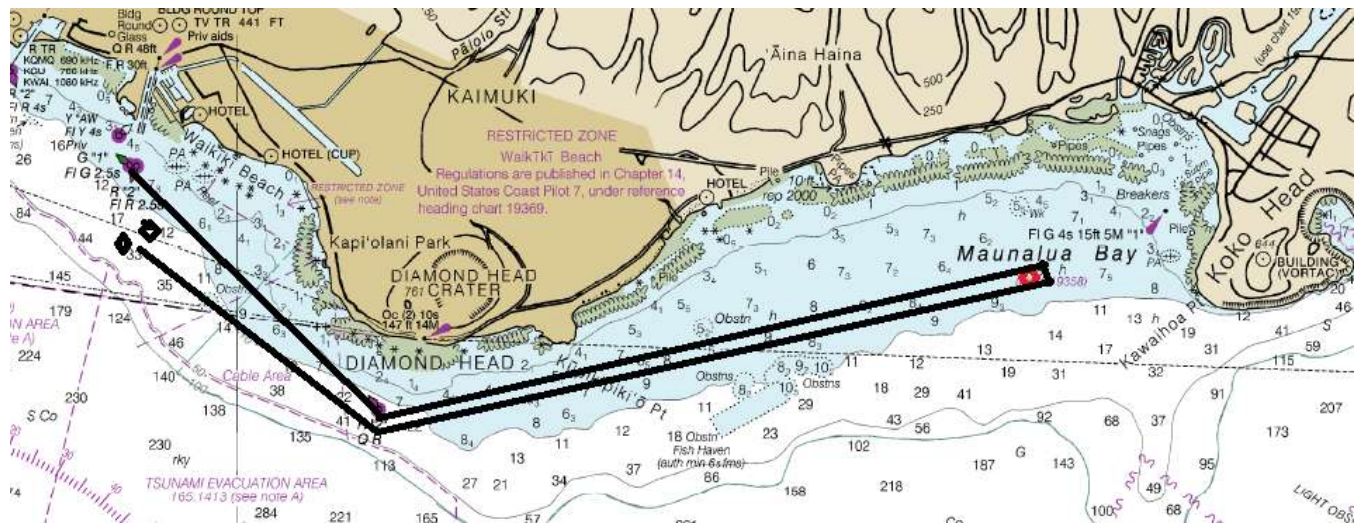
The Race Committee Mark Boat will be located in Maunalua Bay at approximately N 21°16' W 157°44'. Unless announced otherwise, the Race Committee Mark Boat will be a 20' Boston Whaler Conquest (no name –see picture below) with white hull with red trim and black bimini top and will be flying M and/or Orange signal flag(s). Racers may confirm location of Race Committee Mark Boat via VHF Channel 68.

**9. THE START & FINISH:** The starting line will be between two yellow or orange tetrahedron buoys located near the entrance to the Ala Wai Channel. The finish line will be between Ala Wai Channel buoys G1 and R2 (R2 to starboard). If Race Committee Boat is not on station at the time of a boat's finish, the boat will record their HST time of finish (HH:MM:SS) and report it to the Race Committee.

**10. TIME LIMIT:** The time limit for the races will be four hours for the first boat to finish.

11. **PROTESTS:** Protests shall be delivered to WYC within 45 min. after the race committee boat docks. The protest time limit and a list of protests received will be posted on the notice board. Hearings will be held as soon as possible after racing at WYC.
12. **SCORING:** Yachts will be scored in a class under PHRF system as endorsed by HYRA. A & B will also be scored together, however awarded as separate fleets
13. **PRIZES:** Awards will be at WYC after the event
14. **DISCLAIMER OF LIABILITY:** Competitors participate in the regatta entirely at their own risk. See rule 4, Decision to Race. The organizing authority will not accept any liability for material damage or personal injury or death sustained in conjunction with or prior to, during, or after the regatta
15. **INSURANCE:** Each participating boat shall be insured with valid third party liability insurance with a minimum cover of \$300,000 per incident or the equivalent.
16. **REQUIREMENTS FROM DNLR:**
  - 16.1 All boats shall follow all navigational rules at all times while in the ocean waters.
  - 16.2 Each boat operator shall have passed the boater safety education class and have their boater safety education card on them during the use of the motorized vessels.
  - 16.3 All government mandated COVID restrictions will be adhered to.

#### The Course



#### Race Committee Mark Boat

