

2021

J22 Canadian Championship
Regatta

Sailing Instructions

J22 Canadian Championship

September 11 - 12, 2021

Organizing Authority: The Hudson Yacht Club

SAILING INSTRUCTIONS

1 RULES

- 1.1 The regatta will be governed by the rules as defined in *The Racing Rules of Sailing*.
- 1.2 The J22 Class rules will apply.
- 1.3 If there is a conflict between the English and French versions of these Sailing Instructions, the English version will take precedence.

2 NOTICES TO COMPETITORS

- 2.1 Notices to competitors will be posted on the official notice board located on the veranda of the Hudson Yacht Club.
- 2.2 There will be a skippers' meeting at 0830 Saturday morning only. This meeting will take place on the terrace situated in front of the Club.

3 CHANGES TO SAILING INSTRUCTIONS

Any change to the sailing instructions will be posted before 0800 on the day it will take effect, except that any change to the schedule of races will be posted by 1800 on the day before it will take effect.

4 SIGNALS MADE ASHORE

- 4.1 Signals made ashore will be displayed at the flag pole on the T pier in front of the HYC terrace.
- 4.2 When flag AP is displayed ashore, '1 minute' is replaced with 'not less than 30 minutes' in the race signal AP.
- 4.3 When flag Y is displayed ashore, RRS 40 applies at all times while afloat. This changes Rule 40 of the Racing Rules of Sailing.

5 SCHEDULE OF RACES

- 5.1 Dates of racing:

| <u>Date</u> | <u>Race</u> | <u>Warning Signal</u> |
|-------------|-------------|-------------------------------------|
| Sept. 11 | Race 1 | 1000 |
| | Next races | To follow as soon after as possible |
| Sept. 12 | Next race | 0930 |
| | Next races | To follow as soon after as possible |

- 5.2 Number of races - a maximum of 7 races will be sailed.

- 5.3 After a long postponement, to alert boats that a race or sequence of races will begin soon, an orange flag will be displayed with one sound at least four minutes before a warning signal is displayed.

- 5.4 On Sunday, September 12, no warning signal will be made after 1430.

6 CLASS FLAGS

The numerical pennant 2 will be used as the Warning signal instead of the class flag.

7 RACING AREAS

A chart showing the location of the racing area is provided as a separate document along with the Sailing Instructions.

8 THE COURSES

- 8.1 The diagram in Addendum A shows the courses, including the approximate angles between legs, the order in which marks are to be passed, and the side on which each mark is to be left.
- 8.2 No later than the warning signal, the Race Committee signal boat will display the course to be sailed and the approximate compass bearing of the first mark. .
- 8.3 When a leeward Gate mark is missing, boats shall round the single leeward mark to port.

9 MARKS

- 9.1 The Windward mark will be an orange tetrahedron.
- 9.2 The Offset mark will be an orange mark.
- 9.3 The Gate marks will be yellow tetrahedrons.
- 9.4 The starting and finishing marks will be a staff displaying an orange flag.
- 9.5 If Mark 1 is changed, the change mark will be a yellow tetrahedron.

10 THE START

- 10.1 The starting line will be between the orange flag on the signal boat at the starboard end and the start mark at the port end.
- 10.2 A boat starting later than 5 minutes after her starting signal will be scored Did Not Start without a hearing. This changes RRS A4 and A5.
- 10.3 If any part of a boat's hull is on the course side of the starting line at the time of her starting signal and she is identified, the race committee will attempt to broadcast her sail number on VHF channel 71. Failure to make a broadcast or to time it accurately will not be grounds for a request for redress. This changes RRS 62.1(a).
- 10.4 The U flag and black flags will only be used after the P flag, I flag and Z flag have all been used for previous attempted starts of the same race.

11 CHANGE OF THE NEXT LEG OF THE COURSE

- 11.1 To change the position of the next mark, the Race Committee will lay a new mark, or move the finish line, and remove the original mark as soon as possible. If there

is a subsequent change of a replacement mark, it will be replaced by the original mark.

12 THE FINISH

The finishing line will be between the staff on the Race Committee boat displaying an orange flag and the finishing mark.

13 TIME LIMITS AND TARGET TIMES

13.1 Time limits and target times are as follows:

| <u>Mark 1</u> | <u>Race</u> | <u>Race Target</u> |
|-------------------|-------------------|--------------------|
| <u>Time Limit</u> | <u>Time Limit</u> | <u>Time</u> |
| 25 minutes | 80 minutes | 50 minutes |

13.2 If no boat has passed Mark 1 within the Mark 1 Time Limit, the race will be abandoned.

13.3 If no boat has finished the race within the Race Time Limit, the race will be abandoned.

13.4 Failure to meet the Race Target Time will not be grounds for redress. This changes RRS 62.1(a).

13.5 Boats failing to finish within 15 minutes after the first boat sails the course and finishes shall be scored 1 more than the last boat to finish within the time limit, without a hearing. This changes RRS 35, A4 and A5.

14 PROTESTS AND REQUESTS FOR REDRESS

14.1 Protest forms are available at the bar, located in Hudson Yacht Club. Protests and requests for redress or reopening shall be delivered there within the appropriate time limit.

14.2 The protest time limit is 60 minutes after the signal boat docks at the end of the day.

14.3 Notices will be posted no later than 30 minutes after the protest time limit to inform competitors of hearings in which they are parties or named as witnesses. Hearings will be held in the protest room, located on the second floor of the clubhouse, beginning as soon as possible after the end of protest time.

14.4 Notices of protests by the race committee or protest committee will be posted to inform boats under RRS 61.1(b).

14.5 On the last scheduled day of racing a request for reopening a hearing shall be delivered

(a) Within the protest time limit if the requesting party was informed of the decision on the previous day;

(b) No later than 30 minutes after the requesting party was informed of the decision on that day.

This changes RRS 66.

14.6 On the last scheduled day of racing a request for redress based on a protest committee decision shall be delivered no later than 30 minutes after the decision was posted. This changes RRS 62.2.

15 SCORING

- 15.1 3 races are required to be completed to constitute a series.
- 15.2 When fewer than 5 races have been completed, a boat's series score will be the total of her race scores.
- 15.3 When from 5 to 7 races have been completed, a boat's series score will be the total of her race scores excluding her worst score.

16 SAFETY REGULATIONS

- 16.1 A boat that retires from a race shall notify the race committee as soon as possible.

17 REPLACEMENT OF CREW OR EQUIPMENT

- 17.1 Substitution of competitors shall not be allowed without prior written approval of the race committee.
- 17.2 Substitution of damaged or lost equipment shall not be allowed unless authorized by the race committee. Requests for substitution shall be made to the committee at the first reasonable opportunity.

18 EQUIPMENT AND MEASUREMENT CHECKS

A boat or equipment may be inspected at any time for compliance with the class rules and sailing instructions. On the water, a boat can be instructed by a race committee equipment inspector or measurer to proceed immediately to a designated area for inspection.

19 ADVERTISING

As per J22 class rules.

20 OFFICIAL BOATS

The Race Committee boat will be the Hudson Yacht Club boat (Harold Gilmeister), or the red Niagara 26 (Redcoat), flying the RC flag.

21 SUPPORT BOATS

No support boats shall be allowed.

22 TRASH DISPOSAL

Boats shall not put trash in the water.

23 HAUL-OUT RESTRICTIONS

All boats must be in the water by 0900 Saturday morning and shall not be hauled out during the regatta except with, and according to, the terms of prior written permission of the race committee.

24 DIVING EQUIPMENT AND PLASTIC POOLS

Underwater breathing apparatus and plastic pools or their equivalent shall not be used around boats between the preparatory signal of the first race and the end of the regatta.

25 RADIO COMMUNICATION

- 25.1 Race committee will use Channel 71 for all communications with competitors.
- 25.2 Except in an emergency, a boat shall neither make or receive radio transmissions while racing not available to all boats. This restriction also applies to mobile telephones.

26 PRIZES

Prizes will be given for first, second, and third places.

27 DISCLAIMER OF LIABILITY

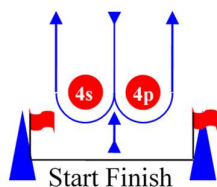
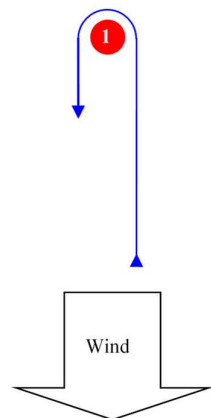
Competitors participate in the regatta entirely at their own risk. See RRS 4, Decision to Race. The organizing authority will not accept any liability for material damage or personal injury or death sustained in conjunction with or prior to, during, or after the regatta.

ADDENDUM A

Course Illustrations – Windward Leeward

Boats at both ends of the starting line and finishing lines

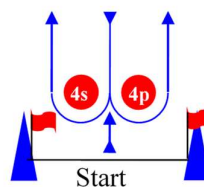
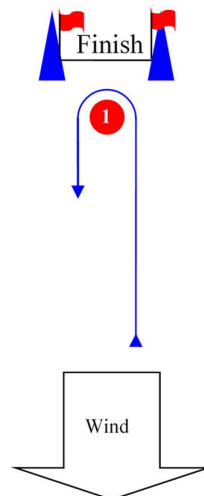
L



Course: Leeward finish

| Signal | Mark Rounding Order |
|-----------|--------------------------------------------------------|
| L2 | Start – 1 – 4s/4p – 1 – Finish |
| L3 | Start – 1 – 4s/4p – 1 – 4s/4p – 1 – Finish |
| L4 | Start – 1 – 4s/4p – 1 – 4s/4p – 1 – 4s/4p – 1 – Finish |

W

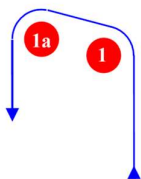


Course: Windward Finish

| Signal | Mark Rounding Order |
|-----------|----------------------------------------------------|
| W2 | Start – 1 – 4s/4p – Finish |
| W3 | Start – 1 – 4s/4p – 1 – 4s/4p – Finish |
| W4 | Start – 1 – 4s/4p – 1 – 4s/4p – 1 – 4s/4p – Finish |

LA / WA

Course: Windward/leeward with offset mark 1a



| Signal | Mark Rounding Order |
|------------|----------------------------------------------------------------------------|
| LA2 | Start – 1 – 1a – 4s/4p – 1 – 1a – Finish |
| LA3 | Start – 1 – 1a – 4s/4p – 1 – 1a – 4s/4p – 1 – 1a – Finish |
| LA4 | Start – 1 – 1a – 4s/4p – 1 – 1a – 4s/4p – 1 – 1a – 4s/4p – 1 – 1a – Finish |
| WA2 | Start – 1 – 1a – 4s/4p – Finish |
| WA3 | Start – 1 – 1a – 4s/4p – 1 – 1a – 4s/4p – Finish |
| WA4 | Start – 1 – 1a – 4s/4p – 1 – 1a – 4s/4p – 1 – 1a – 4s/4p – Finish |

ADDENDUM B

Racing Area

NOTE: This diagram is shown as a depiction of the proposed racing area and is not up to date. Not to be used for navigation purposes. Water is very low this year and there are reefs marked with red lines on this depiction. There might be other rocks close to shore.

