

## **SAILING INSTRUCTIONS**

### **1 RULES**

- 1.1 The regatta will be governed by the rules as defined in Racing Rules of Sailing.

### **2.1 NOTICE TO COMPETITORS**

- 2.1 Notices to competitors will be posted on the official notice board located on the East window of the WRSC clubhouse.

### **3 SIGNALS MADE ASHORE**

- 3.1 Signals made ashore will be displayed from the flagpole located at WRSC. When flag AP is displayed ashore, '1 minute' is replaced with 'not less than 1 hour' in the race signal AP.

### **4 SCHEDULE OF EVENTS**

- 4.1 Saturday  
0900 Registration closed  
0930 Competitor's Meeting

First Warning Signal:  
1100 First Warning Signal

The Race Committee (RC) will announce the order of starts for the first race at the competitors' meeting.

- 4.2 Sunday  
1030 First warning signal  
1500 No races will start after this time  
Scores will follow racing.

- 4.3 Number of Races: There is no limit to the number of races. The committee will attempt to maximize racing for the conditions available.

### **5 CLASS FLAGS**

- 5.1 Class flags will be the respective insignia or as described at the competitor's meeting.

### **6 THE COURSES**

- 6.1 The course will be as shown in Appendix D.

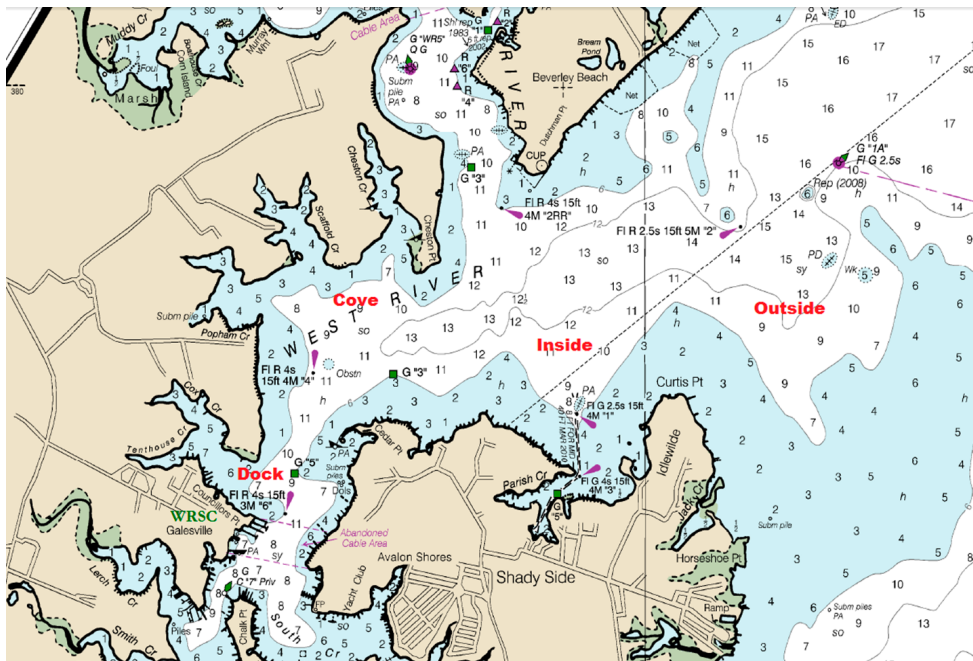
### **7 MARKS**

- 7.1 The marks will be as described in Appendix D.

# 2021 ANNUAL LABOR DAY REGATTA SI's

## 8 RACING AREA

- 8.1 The venue shall be finalized by the RC on race day. WRSC typically races this event on the inside course.



## 9 THE START

- 9.1 Classes will use a fixed starting line which will be between a staff displaying a yellow flag on the RC signal boat and the course side of the port-end starting mark to be left to port.
- 9.2 Boats whose warning signal has not been made shall avoid the starting area during the starting sequence for other classes.
- 9.3 The order of the starts may not be constant.

## 10 THE FINISH

- 10.1 The finishing line will be between a staff displaying an blue flag on the race committee vessel and the course side of the finishing mark.

## 11 TIME LIMITS

- 11.1 The first boat must finish within 60 minutes. First boat must round the windward mark within 20 minutes.
- 11.2 Boats failing to finish within 30 minutes after the first boat sails the course and finishes will be scored DNF. This changes RRS 35.

## 12 PROTESTS AND REQUESTS FOR REDRESS

- 12.1 The Penalties should follow Rule 44 of RRS. Rules 44.1 and 44.2 are changed for all classes, so that only one turn, including one tack and one gybe, is required.

## 2021 ANNUAL LABOR DAY REGATTA SI'S

- 12.2 Protest Forms are on the board room table. Protests and requests for redress or reopening shall be delivered to the PRO within one hour after the RC returns to the dock. The list of protests and requests received will be posted on the notice board. Hearings will be held as soon as possible after racing each day in the clubhouse boardroom.
- 13 SCORING**
- 11.1 One (1) race is required to be completed to constitute a series
- a When fewer than 6 races have been completed, a boat's series score will be the total of her race scores.
  - b When from 6 to 11 races have been completed, a boat's series score will be the total of her race scores excluding her worst score.
  - c When 12 or more races have been completed, a boat's series score will be the total of her race scores excluding her two worst scores.
- 14 ON THE WATER SAFETY REGULATIONS**
- 14.1 Before starting their first race of the day, all competitors' boats shall sail astern the signal boat, give their sail number and be acknowledged by the race committee.
- 14.2 A boat that retires from a race shall notify the race committee as soon as possible, once ashore hail the race committee via the VHF.
- 15 SUPPORT BOATS**
- 15.1 Support boats shall be marked with the letters WRSC or as described at the competitor's meeting.
- 16.1 RADIO COMMUNICATION**
- 16.1 Except in an emergency, a boat that is racing shall not make voice or data transmissions and shall not receive voice or data communications that is not available to all boats. This restriction also applies to mobile telephones but does not apply to communications to notify the RC that a competitor is leaving the race area.
- 17 PRIZES**
- 17.1 For each class, prizes will be given to the first-place finisher in classes with three or fewer entries, the first two finishers in classes with six or fewer entries, and the first three finishers in classes with seven or more entries.
- 17.2 The Billy Heintz Memorial perpetual trophy will be awarded to first place finisher in the class with the largest number of registered competitors.
- 18 DISCLAIMER OF LIABILITY**
- 18.1 Competitors participate in the regatta entirely at their own risk. See RRS 4, Decision to Race. The organizing authority will not accept any liability for material damage or personal injury or death sustained in conjunction with or prior to, during, or after the regatta.

## APPENDIX D

### 1 COURSE

1.1 Courses will be either...  
Windward-Leewards as drawn below designated by the letter W posted on the starboard side of the signal boat.

1.2 Triangles as drawn below designated by the letter T posted on the starboard side of the signal boat.

2.1 The number of legs will be designated after the letter (i.e. "W4" indicates windward, leeward, windward, then finish to leeward). The course will be posted prior to the Preparatory signal.

2.1 If only one of the Leeward gate marks is set, it shall be rounded on port.

### MARKS

2.2 Small round red/orange marks will be used for the offset, starting, and finish pins.  
Yellow cylinders will be used as the windward and leeward marks.  
An orange trapezoid shall be used as the change of course mark.

The marks shall be as described above unless otherwise described at the competitor's meeting.

