



59th ANNUAL - OPEN ORANGE BOWL REGATTA

Coconut Grove Sailing Club - Miami, FL

December 27-30, 2021

SAILING INSTRUCTIONS

1. RULES

- 1.1 The 2021 CGSC Open Orange Bowl Regatta will be governed by the “The Rules” as defined in the current Racing Rules of Sailing (RRS).
- 1.2 Only the following prescriptions of US Sailing will apply: RRS 61.4, Appendix R, Appendix V1, and prescriptions to RRS rules 40, 60.3, 67, 70.5(a), and 76.1. They will be posted on the official on-line notice board.
- 1.3 In the event of conflict between the Notice of Race (NoR) and these Sailing Instructions (SIs), these SIs and any amendments to these SIs will prevail. This changes RRS 63.7. If there is a conflict between a Class Rule and these SIs, the SIs will take precedence to the extent allowed by the Class Rules.
- 1.4 The special procedures of Appendix P5 will apply. In particular, the attention of participating 29ers and I-420s is drawn to 29er CR C1.1 (b) and I-420 CR C.1.1.1 which modify RRS 42 under certain conditions. In this regard, the Race Committee will display Race Signals as provided in RRS P5.
- 1.5 Race Course Check-in - All boats must check in with the Race Committee prior to the Warning Signal of the first race each day by sailing past the stern of the Signal Boat on starboard tack and hailing her sail number until acknowledged by the Race Committee. Failure to comply with SI 1.5 will result in a 20% penalty in the first race that day without a hearing. This changes *RRS 63.1*.

2. NOTICES TO COMPETITORS

- 2.1 Notice to competitors will be posted on the Official Notice Board (ONB) at Regatta Network and by email to all competing boats affected by this notice. The URL for the ONB is https://www.regattanetwork.com/event/23208#_newsroom. Failure of a boat to receive or read any such emails and notices will not be grounds for redress. This changes RRS 62.1(a)6.
- 2.2 On Sunday, December 26th, at 17:30, there will be a briefing for competitors and coaches at CGSC.
- 2.3 Race Results will be on Regatta Network, at https://www.regattanetwork.com/event/23208#_newsroom

3. CHANGES TO SAILING INSTRUCTIONS

- 3.1 Written changes will be posted by 1000 on Monday, December 27th, and thereafter by 0830 on the day they will take effect. However, any changes in the Schedule of Races will be posted by 1000 on Monday, December 27, or by 1900 or the protest time limit (whichever is later) on the day before they take effect.
- 3.2 Changes to the Sailing Instructions may be given on the water in accordance with RRS 90.2(c). The Race Committee Signal Boat shall display Code Flag "L" (with one sound) in accordance to RRS 90.2(c) and Competitors shall approach the Signal Boat and verbally receive the change or read the change on a board posted on the signal boat.

4. SIGNALS MADE ASHORE

- 4.1 Signals made ashore will be displayed from the CGSC flagpole, and posted to the ONB.
- 4.2 When Code Flag "L" is displayed ashore, a notice to competitors has been posted on the Official Notice Board, and notification will be sent to competing boats by email.
- 4.3 When Code Flag "AP" is displayed ashore, "1 minute" is replaced with "not less than 60 minutes" in the race signal AP. This changes RRS Race Signals AP.

5. SCHEDULE

- 5.1 The schedule for the regatta will be as follows:

Sunday, Dec. 26	
Equipment Arrival & Staging	0830 - Dark
Competitor and coach registration and check-in	1500 - 1700
Competitors' meeting at CGSC	1730
Monday, Dec. 27	
Competitor and coach registration and check-in	0800 - 0930
First warning signal: I-420s, Flying Scots	1100
Tuesday, Dec. 28	
First warning signal: I-420s, Flying Scots	1100
First warning signal: 29ers	1130
Wednesday, Dec. 29	
Lasers, Finn, Sunfish registration and check-in	0800 - 0900
First warning signal: I-420s, Lasers, Finns, Sunfish	1100
First warning signal: 29ers	1130
Thursday, Dec. 30	
First warning signal: I-420s, Lasers, Finns, Sunfish	1100
First warning signal: 29ers	1130
No warning after this time	1330
Virtual Awards Ceremony	ASAP After Racing

- 5.2 Eleven (11) races are scheduled for the I-420, 29er and Nacra 15 classes. Five (5) races are scheduled for the Adult Laser, Flying Scot, Finn and Sunfish classes.
- 5.3 The Race Committee Finishing Boat will display Code Flag "A" without a sound signal, while boats are finishing indicating there will be no more racing that day. If Code Flag "A" is not displayed, boats should return to the starting area in anticipation of another race.
- 5.4 On the final day of the regatta, no warning signal will be made later than 1330 hours.

6. CLASS FLAGS

- 6.1 The descriptions of the Class flags for all classes will be announced at the Competitor's meeting and posted on the ONB.

7. RACING AREA

- 7.1 All racing will be on Biscayne Bay in an area approximately 1.2 miles 145 degrees SE of John A. Brennan Channel Marker "1" (Fl.G 5sec 8ft). See "ADDENDUM No. 2 - Race Areas" attached.
- 7.2 The I420s, Nacra 15s, Flying Scots, Finns, Laser and Sunfish will race on the circle identified as CGSC on Addendum No. 2. The 29ers will race on the circle identified as CGSC/29er on Addendum No. 2.

8. COURSES

- 8.1 Course details for the 29ers are set forth in Addendum 3.
- 8.2 Courses for the I420s, Flying Scots, Finns, Laser, and Sunfish will be posted on the Race Committee Signal Boat course board prior to the Warning Signal of each race. For each Class, the designation of the course to be sailed, the approximate magnetic compass bearing of the first leg, and distance from the Starting Line to the Windward Mark will be displayed. (See Addendum No. 1.).
- 8.3 Course Designations:
- | |
|---|
| COURSE W Windward/Leeward (to Further Windward mark) |
| ● Start – 1 - 4S/4P - 1- 4S/4P – Finish |
| COURSE WM Windward/Leeward (to Closer Windward mark) |
| ● Start – 1m – 1a - 4S/4P – 1m – 1a-- 4S/4P – Finish |
| COURSE O Outer Trapezoid |
| ● Start – 1 – 2 - 3S/3P - 2 - 3S/3P - Finish |
| COURSE I Inner Trapezoid |
| ● Start – 1 – 4S/4P - 1 – 2- 3S/3P - Finish |
- 8.4 The interior angle between Marks 1 and 2 for Courses O and I will be approximately 60 to 70 degrees (with the smaller angle in heavier winds).
- 8.5 Note that if present, the windward Offset Mark (Mark OS) adjacent to Mark 1 is always a mark of the course when rounding Mark 1, regardless of the Course being sailed.
- 8.6 If Marks 4S/4P are present, they will not be marks of the course for I420s or 29ers on the last leg to the finish of Course W.

9. MARKS

- 9.1 Mark details for the 29ers are set forth in Addendum 3.
- 9.2 For the I420s, Flying Scots, Finns, Lasers and Sunfish, Course Marks, except for the Offset Mark(s), will be 5 ft. (1.5m) inflatable tetrahedron marks.
- 9.3 The further Windward Marks and Gates will be orange tetrahedron marks. The closer windward mark (1m) will be a yellow tetrahedron.
- 9.4 The Offset Mark will be a 3 ft. (0.9m) mini-cylinder mark.
- 9.5 All marks shall be left to port, except that:
- The gates (Marks 3S/3P and 4S/4P) shall be left as per *RRS 28.1(c)*, and,
 - The yellow Mark of Finish Line of courses I and O (trapezoids) shall be left to starboard.
- 9.6 If the Windward Mark or the Offset Mark is missing, and no Code Flag "M" is displayed in its place by a nearby Race Committee boat, the only remaining Mark shall be left to port.
- 9.7 If one Gate Mark is missing, the only remaining gate mark shall be left to port.

- 9.8 Starting and Finishing Marks are as provided in SI 10.1 and 13.1, respectively.
- 9.9 The positional relationships among the Marks are depicted in Addendum 1, but are not to scale.
- 9.10 Start and finish marks, if located in a boat, include the boat.

10. THE START

- 10.1 The Start details for the 29ers are set forth in Addendum 3.
- 10.2 The starting line will be between a staff displaying an orange flag on the Race Committee Signal Boat and a staff displaying an orange flag on a port end Line Boat or the course side of a yellow starting mark.
- 10.3 A boat starting later than four (4) minutes after her starting signal will be scored Did Not Start (DNS) without a hearing. (This changes *RRS A4.1* and *63.1*).

11. CHANGE OF THE NEXT LEG OF THE COURSE

- 11.1 The change of next leg of the course details for the 29ers are set forth in Addendum 3.
- 11.2 To change the next leg of the course, the Race Committee will move the original mark (or the finishing line) to a new position.
- 11.3 If Mark 1m is moved during a race, Mark 1a (the offset) will not be used for the remainder of that race.
- 11.4 If the direction of the next leg will be changed, the direction will be signaled in accordance with *RRS 33(a) (2)*.

12. THE FINISH

- 12.1 The finish details for the 29ers are set forth in Addendum 3.
- 12.2 The finish line(s) will be between a staff displaying a blue flag on the Race Committee Finish Boat and a staff displaying a blue flag on a nearby RC Mark Boat, or the course side of a yellow finishing Mark. Finish lines “W”, “O” and “I” are depicted in Addendum No. 1.

13. TIME LIMITS

- 13.1 The time limit and target time for each class (in minutes) are as follows:

Class:	First Mark	Race	Target Time
I-420s	30	90	45
29ers	15	60	28
Nacra 15s	15	60	28
Lasers	30	90	45
Finns	20	80	40
Flying Scots	20	80	40
Sunfish	20	80	40

- 13.2 If no boat has passed the first mark within the Mark 1 Time Limit, the race will be abandoned.
- 13.3 Boats failing to finish within the within 15 minutes of the first boat in her class and not subsequently retiring, penalized or given redress, will be scored Did Not Finish without a hearing. This changes *RRS 35, A5.1 & A5.2*.
- 13.4 Failure to meet the target time will not be grounds for redress. This changes *RRS 62.1(a)*.

14. ALTERNATIVE PENALTIES

- 14.1 A boat that has taken penalty turns is encouraged to notify the Protest Committee by completing the online Penalty Acknowledgement form at <https://docs.google.com/forms/d/e/1FAIpQLSevmymWr-tbbll7qIh0PYm5M8jXXVZdMv5-lbidk-7h2BQw/viewform>
- 14.2 For the 29er class, Rule 44.1 and Appendix V1 is changed so that the Two-Turns Penalty is replaced by the One-Turn penalty.
- 14.3 After a race, a boat that may have broken one or more rules of Part 2 or rule 31 in an incident while racing may request to take a Post-Race Penalty for that incident. A boat takes the penalty by completing the online Penalty Acknowledgement form at <https://docs.google.com/forms/d/e/1FAIpQLSevmymWr-tbbll7qIh0PYm5M8jXXVZdMv5-lbidk-7h2BQw/viewform>. The penalty shall be a 25% Scoring Penalty, calculated as stated in rule 44.3(c). However, rules 44.1(a) and (b) apply, and the penalty shall not be taken after a protest hearing involving the incident has begun.

15. PROTEST AND REDRESS REQUESTS

- 15.1 Scoring inquiries, **including potential redress requests relating to a starting penalty**, should be initiated by filling out the online Scoring Inquiry form at <https://docs.google.com/forms/d/e/1FAIpQLSc56x9WKwLpbLRiQE5NOPGtKmntIVJQTe6-lWpISqVouz5qIQ/viewform>. Alternatively, a completed Scoring Inquiry form may be photographed and emailed to ScoringInquiry@cgsc.org. Also, questions about the status of scoring inquiries can be emailed to ScoringInquiry@cgsc.org. The RC will investigate, get back to you, and attempt to resolve the issue. If the scoring inquiry turns into a redress request, then the redress time limit will have been satisfied if the Scoring Inquiry form was submitted before the redress time limit expired and the request is made within 30 minutes after the inquiry has been answered.
- 15.2 Protests **and requests for redress unrelated to a starting penalty** should be initiated by filling out the online Protest form at https://docs.google.com/forms/d/e/1FAIpQLSdzOkZE7vvK_iXfJzfTr2txULYBp3CoQjtoEphz2aVXlvU5IQ/viewform. Additionally, if a diagram is required, it should be photographed and emailed to Protest@cgsc.org. Alternatively, a completed Protest form may be photographed and emailed to Protest@cgsc.org. Also, questions about the status of protests and redress requests can be emailed to Protest@cgsc.org. Protests and requests for redress shall be emailed within the protest time limit, which is one (1) hour after the RC finish boat docks and which will be posted on the regatta website notice board.. Parties to hearings, and their witnesses, should report to the protest desk by the time scheduled. The protest desk is at Coral Reef Yacht Club, on the second floor of the boat house (white building) at the bayside end.
- 15.3 It is a boat's sole responsibility to check the Hearing Schedule at Regatta Network (https://www.regattanetwork.com/event/23208#_newsroom) or its email promptly after the end of the protest filing time to see if she is cited in a protest.
- 15.4 The Race Committee will post to the ONB a list of penalties being assigned by the race committee and protests reported to the race committee prior to the end of the protest time limit. The deadline for requesting redress based on these scores will be either 30 minutes after posting of the penalty notice or the protest time limit, whichever is later. This changes RRS 62.2.
- 15.5 After a hearing, the protest committee may impose suitable penalties, other than disqualifications, for violations of non-Part 2 rules and rule 31 of the RRS for rules with no penalty specified, in accordance with RRS 64.1.

16. SCORING

- 16.1 A minimum of three (3) races must be completed to constitute a Regatta for the I-420, 29er, and Nacra 15 fleets. A minimum of one (1) race must be completed to constitute a Regatta for the Laser, Flying Scot, Finn and Sunfish fleets.
- 16.2 The low point scoring system, as provided in RRS Appendix "A" shall apply, except that when fewer than six races have been completed, a boat's score will be the total of her race scores. (This changes RRS A2)
- 16.3 All Laser entrants will start together. Lasers and Laser Masters will be scored together for the overall Laser full rig standings. In addition, Laser Masters will be scored for the Laser Masters standings according to the Masters Handicap System. For each race, based on their finish places: Apprentice Masters – add three points; Masters – add two points; Grand Masters – add one point; and Great Grand Masters – add zero points. Ties will be broken in order of the oldest sailor(s) involved in the tie.

17. PRIZES

- 17.1 Trophies will be awarded to the top five finishers in any fleet with 15 or more entries, to the top three boats in any class with 10 to 14 entries, to the top two boats in any class with 5 to 9 entries, and to the top boat in other classes. In addition, for the I-420, 29er and Nacra 15 Classes, the top junior team (skipper and crew not yet age 17 on December 31, 2021) will receive prizes. In addition, there will be a trophy for the top Laser Master.

18. SAFETY REQUIREMENTS

- 18.1 Competitors shall wear adequate personal buoyancy while on the water, other than for brief periods while adding or removing clothing. Wetsuits and drysuits do not constitute adequate personal buoyancy.
- 18.2 A boat that retires from a race or does not intend to start a scheduled race shall promptly report this to the Race Committee via hailing and receive acknowledgement. If this is not possible, once back to shore, the skipper shall email RaceCommittee@cgsc.org.
- 18.3 Coach and support vessels are required by the Race Committee to monitor Race Committee VHF channel **69** for the I420, Nacra 15s, Flying Scots, Finns, Laser and Sunfish and Race Committee VHF channel **68** for the 29ers. In addition, they shall provide assistance to any competitor in danger, if notified to do so by the Race Committee.

19. COACH VESSEL & SUPPORT VESSEL (PARENT & SPECTATOR)

- 19.1 Coach Vessels shall register with CGSC during Registration, receive a flag, and sign a credit card authorization. Upon request, a mooring ball will be assigned for overnight use. The vessel will be charged \$80 if the flag is not returned at the end of the regatta. No coach vessel will be allowed on the course without a flag.
- 19.2 Except when rendering aid, team leaders, coaches and other support persons shall stay 100 meters away from all competitors and outside the trapezoid from the time of the preparatory signal for the first class to start until all boats have finished or retired or the race committee signals a postponement, general recall or abandonment.
- 19.3 Launching of coach vessels not already in the water will be permitted at the Coconut Grove Sailing Club facilities or as directed by host staff. There is no dockage available for non-CGSC coach and support vessels. Non-CGSC coach vessels shall not dock at any time, except they may touch and go on the north and south dock (if the coach remains with the boat). Other non-CGSC support vessels shall not dock at any time. If a non-CGSC coach or support vessel is left unattended on any dock, then this violation of

the rules may result in penalties up to and including expulsion of the vessel from the regatta.

- 19.4 A hearing may be called if a coach or support vessel fails to comply with the requirements of SI 20. The penalty for failing to comply with these requirements or the oral instructions of the Race Committee or Protest Committee will be at the discretion of the Protest Committee. **The penalty may be imposed on any or all boats associated with the support or coach vessel.**

20. RADIO COMMUNICATION

- 20.1 A boat shall neither make radio transmissions while racing nor receive radio communication not available to all boats. This restriction also applies to mobile phones, cell phone calls and text messages.

21. VENUE AND TRASH DISPOSAL

- 21.1 All 420s, 29er and Nacra 15s and out of town Finns, Sunfish and Lasers will be launched, hauled and stored at Regatta Park.
- 21.2 Boats from Biscayne Bay Clubs other than CGSC may launch from and return to their own clubs. However, sailors of those boats must notify CGSC by no later than 1700 on December 26, 2021 whether they will launch, haul and store at Regatta Park.
- 21.3 Each boat on the Regatta Park premises shall have a marked dolly with name.
- 21.4 Flying Scots will be kept at CGSC in the Strip trailer storage area and, if necessary, in the adjacent section of the parking lot.
- 21.5 Vehicle parking inside the CGSC entrance gate is reserved for Members ONLY. Offsite (paid) parking is available nearby on the circle just outside the CGSC Main Gate, in the underground public parking garage a half block up McFarlane, or elsewhere nearby.
- 21.6 There are three docks at CGSC, two floating and one fixed. A public boat ramp facility is located north of and adjacent to CGSC. For the CGSC Open Orange Bowl Regatta, CGSC's launching facilities will be configured so as to provide one hoist and two launch ramps.
- 21.7 All trailer unloading, loading and staging at Regatta Park and/or CGSC will be done as instructed by the organizers or host staff. Trailers will be parked off site at the designated Orange Bowl trailer parking area at Dinner Key Marina/Regatta Park.
- 21.8 All skippers and crews must properly dispose of trash while ashore at CGSC or afloat. Trash left on the ground will not be tolerated.
- 21.9 Refuse may be given to any support RC boat between races.

22. DISCLAIMER OF LIABILITY

- 22.1 Competitors participate in the regatta entirely at their own risk. See RRS 3, Decision to Race. The Race Committee, Host Club or its officers will not accept any liability for material damage or personal injury or death sustained in conjunction with or prior to, during or after the regatta.

CGSC MANAGER Lauren Simpson, laurensimpson@cgsc.org
DOCKMASTER Eric Lindeman, dockmaster@cgsc.org
RACE COMMITTEE CHAIR Susan Walcutt, walcutts@bellsouth.net
REGATTA CHAIR Andi Hoffman, CGSCgrace@gmail.com
PRO Jeff Zarwell,
CHIEF JUDGE Rick Mallinson,

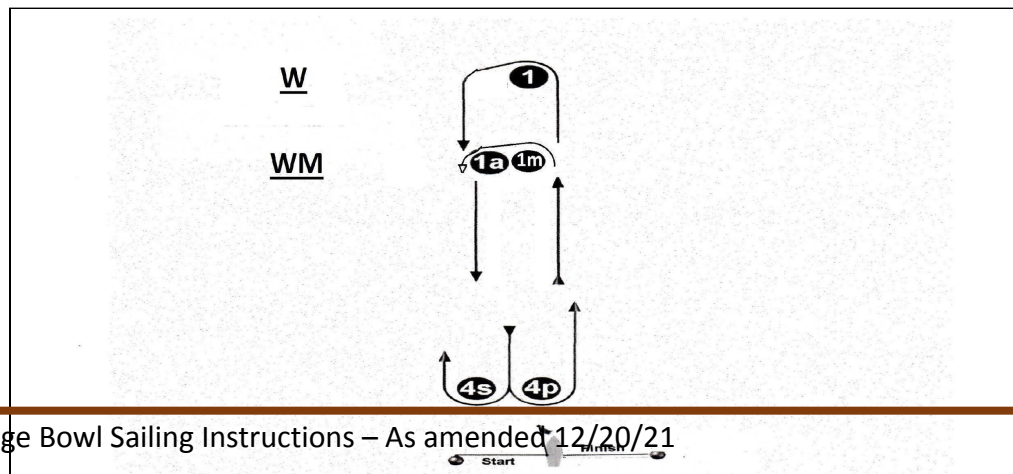
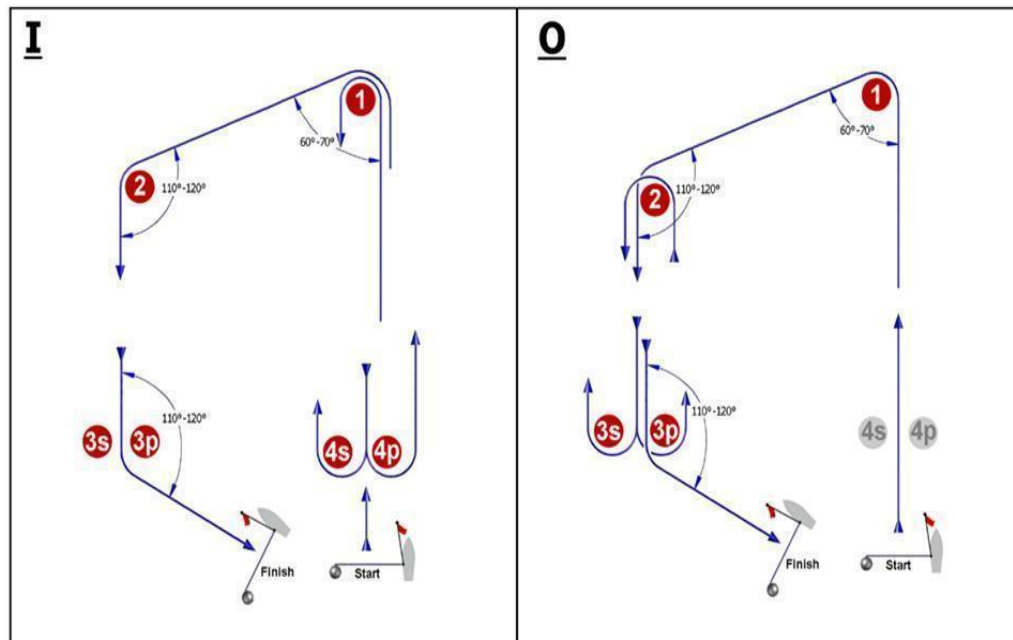
ADDENDUM No. 1

COURSE ILLUSTRATIONS

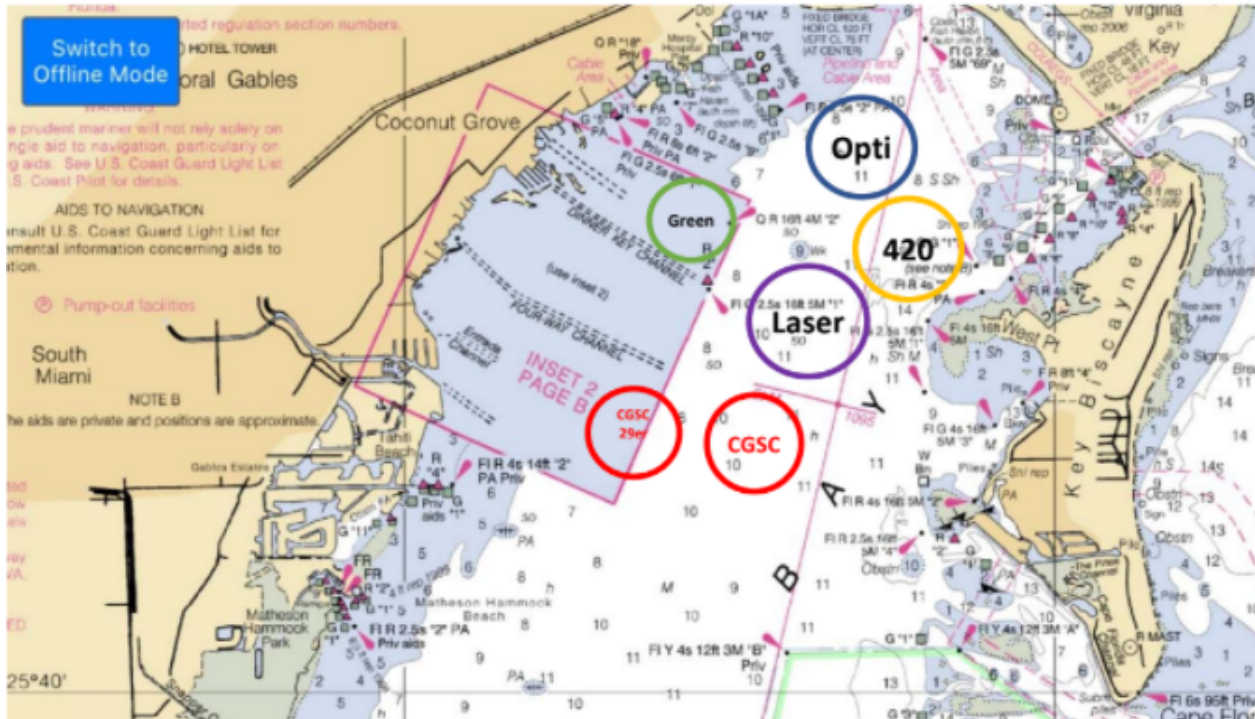
EXAMPLE COURSE BOARD – R/C SIGNAL BOAT

<u>BEARING</u>	<u>CLASS</u>	<u>COURSE</u>	<u>NM</u>
120°	I-420	O	0.8
	29er	W	0.8
	Others	WM	0.6

If present, the Windward Offset Mark adjacent to Mark 1 is always a mark of the course, when rounding Mark 1, regardless of the course being sailed.



ADDENDUM No. 2 - Race Areas



Circle	VHF	Diameter (nm)	Center - Lat / Long (deg min sec)
Opti	71	1.25	N25°44.160 W080°11.530
Laser/Radial/4.7	74	1.5	N25°42.680 W080°11.810
420	73	1.25	N25°43.350 W080°11.000
Green	78	.85	N25°43.580 W080°12.630
CGSC	69	.85	N25°41.720 W080°13.480
CGSC/29er	68	.85	N25°41.720 W080°13.400

ADDENDUM No. 3

Sections 8 - 12 Specific to the 29er Fleet

8. THE COURSES

- 8.1 The diagrams in Attachment C show the courses, including the order in which marks are to be passed. All rounding marks shall be left to port, except Marks 4S/4P which are gates.
- 8.2 When more than one course is available, the RC shall post the course to be sailed on a white board on the signal boat before the warning signal for each race.
- 8.3 If one of the gate marks is missing, the mark in position will be rounded to port.

9. MARKS

- 9.1 If one of the gate marks is missing, the mark in position will be rounded to port.
- 9.2 Mark 1 will be Yellow, Marks 4s/4p will be orange.
- 9.3 Start/Finish Line will be a White Ball

10. THE START

- 10.1 Races will be started in accordance with RRS 26.
- 10.2 The starting line will be between a staff displaying an orange flag on the RC signal and the course side of a white mark.
- 10.3 In the event a boat(s) is scored OCS, UFD, or BFD, the RC may display her recall number on a white board on the signal boat. This is a courtesy only and failure of the RC to make this posting shall not be grounds for redress.

11. COURSE CHANGES

- 11.1 To change the next leg of the course, the RC will (a) move the weather mark, (b) move the finishing line, or (c) move the leeward gate (all original marks).
- 11.2 The RC may make minor adjustments in the course without signaling a change of course. This changes RRS 33.

12. THE FINISH

- 12.1 The finishing line will be between a staff displaying an orange flag on the finish line boat and the course side of a nearby mark as described in SI 9 and as shown in Attachment C.

ATTACHMENT C

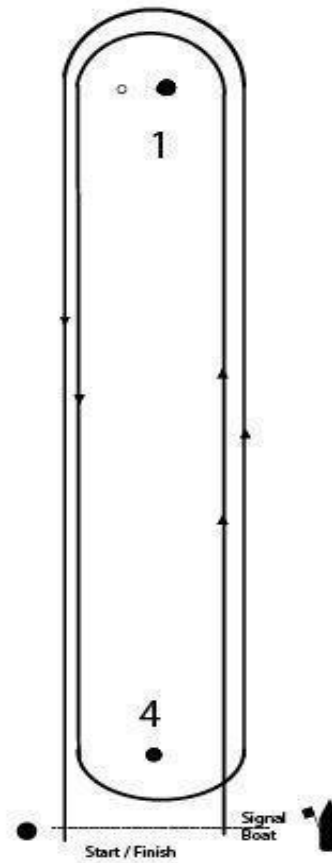
Course Designation

I

Start-1-4-1-Finish

- o Mark 1A = optional offset mark

Mark 4 Gate Note
A gate may be employed in place
of Mark 4.



WAITING AREA