

INTERNATIONAL SOLING CLASS

United States National Championships

September 16, 17, 18, 19, 2021

Milwaukee Yacht Club, Lake Michigan

Sailing Instructions

1. RULES

1.1 The regatta will be governed by the rules as defined in The Racing Rules of Sailing.

1.2 **SPECIAL RULE:** After the warning signal for a race the registered helmsperson shall not leave the helm except in an emergency or with the prior written permission of the Race Committee or International Jury.

2. NOTICES TO COMPETITORS

Notices to competitors will be posted on the official notice board located near the front entrance to the Milwaukee Yacht Club.

3. CHANGES TO SAILING INSTRUCTIONS

3.1 After the beginning of registration the following Sailing Instructions may not be changed: 1.1, 3, 5.2

3.2 Any change to the sailing instructions will be posted 3 hours before the start of the first race on the day that it will take effect, except that any change to the schedule of races will be posted by 20:00 on the day before it will take effect.

4. SIGNALS MADE ASHORE

4.1 Signals made ashore will be displayed at the Milwaukee Yacht Club Main Mast

4.2 When flag AP is displayed ashore, '1 minute' is replaced with 'not less than 60 minutes' in Race Signals AP.

5. SCHEDULE OF RACES

5.1 Dates of Racing:

Date

Friday, September 17

Saturday, September 18

Sunday, September 19

Races

Races 1&2 1100 warning for the first race

Races 3&4&5 or TBD

Races 6&7 or TBD

The first warning each day will be at 1100 hours or as announced by the Race Committee by 2000 hours on the previous day.

5.2 Seven (7) races are scheduled of which three (3) must be completed to constitute a valid championship.

5.3 A maximum of 4 races per day may be sailed. A third race may be sailed on any day, provided that does not cause the number of remaining races to be less than the number of scheduled race days remaining. A fourth race may be sailed on any day only to bring the programme back to, or towards, the published schedule of races.

5.4 A second or third or fourth race to be held on any day will be signalled by displaying flag D on the race committee boat at the finish line of the previous race.

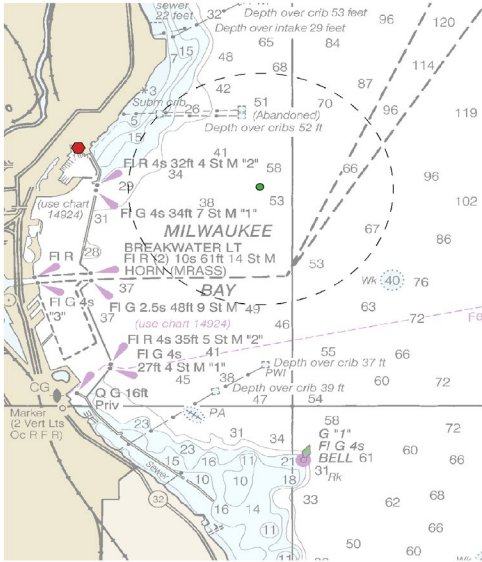
5.5 On the last day of the regatta no warning signal will be made after 1430 hrs.

6. CLASS FLAG

The Class flag will be the class logo on a white background.

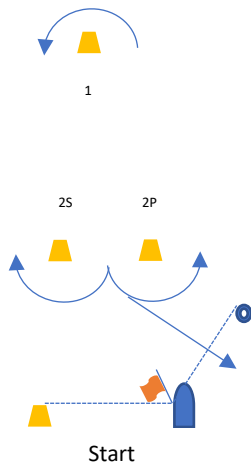
7. RACING AREAS

Attachment 1 shows the location of the racing areas.



8. THE COURSE

- 8.1 The diagram in SI 8.3 shows the course, including the approximate angle between legs, the order in which marks are to be passed and the side on which each mark is to be left. No later than the warning signal, the race committee signal boat will display the approximate distance of the first leg and the approximate compass bearing of the first leg.
- 8.2 Courses may only be shortened by eliminating the final lap or individual legs of that lap. This changes RRS 32.
- 8.3 **Course Diagram: Course 1**



Course Designation	Order of Mark Rounding
1	Start - 1 - 2S/2P - 1 - 2P - Finish

Finish (blue flag substituted for orange at finish)

- 8.4 The segment from the last gate to the finish line is part of the last downwind leg of the course.
- 8.5 If one of the marks is missing at a leeward gate, the boats shall round the remaining mark to port. If less than 12 boats are sailing, the Race Committee may choose not to set a leeward gate.

9 MARKS

- 9.1 Marks 1 and 2 (or 2S-2P if a gate) will be yellow BOTs.
- 9.2 New marks as provided in SI 11.1 will be repositioned BOTs.

- 9.3 The finishing mark will be a mark of a different color from the marks in SI 9.1 and 9.2. The finishing mark may be set to the port end of the finish line.
- 9.4 Routine movement of robotic marks will not be grounds for redress. This includes marks that are repositioning after being pushed by a boat and collisions that do not cause damage. RRS 31 still applies.

10 THE START

- 10.1 The starting line will be between a signal boat displaying an orange flag on the starboard end and either 1) a nearby mark or 2) a boat displaying an orange flag on the port end.
- 10.2 To alert boats that a race will begin soon the orange flag will be displayed with one sound for at least 5 minutes before a warning signal is made.
- 10.3 A boat that does not start within four (4) minutes after her starting signal will be scored Did Not Start without a hearing. This changes RRS A4 and A5.

11 CHANGING OF THE NEXT LEG OF THE COURSE

- 11.1 To change the next leg of the course, the race committee will lay a new mark (or move the finishing line) and remove the original mark as soon as practicable. When in a subsequent change a new mark is replaced, it will be replaced by an original mark. If the original mark is a BOT, the new mark will be a repositioned BOT.
- 11.2 Except at a gate, boats shall pass between the race committee vessel signalling the change of the next leg and the nearby mark, leaving the mark to port and the race committee vessel to starboard. This changes RRS 33.

12 THE FINISH

The finishing line will be between a staff displaying a blue flag on a race committee vessel and the adjacent finishing mark.

13 PENALTY SYSTEM

- a) The first two sentences of RRS 44.1 are changed to: 'A boat may take a One-Turn Penalty when she may have broken one or more rules of Part 2 or rule 31 of the RRS in an incident while racing.
- b) A boat that has taken a penalty or retired shall complete an acknowledgement form at the race office within the protest time limit.

14 TIME LIMITS

- 14.1 The time limits for the leading boat are:
- | | |
|---------------|----------------------|
| <u>Mark 1</u> | <u>Race</u> |
| 30 minutes | Courses 1: 2.0 hours |
- If no boat has passed Mark 1 within the Mark 1 time limit the race will be abandoned. Failure to meet the target time will not be grounds for redress. This changes RRS 62.1(a)
- 14.2 Boats finishing more than 25 minutes after the first boat sails the course and finishes will be scored Did Not Finish without a hearing, this changes RRS 35, A4 and A5

15 PROTESTS AND REQUESTS FOR REDRESS

- 15.1. Protest forms are available from the race office. Protests and requests for redress or reopening shall be delivered there within the appropriate time limit.
- 15.2 The protest time limit is 90 minutes after the last boat has finished in the last race of the day or the race committee signals no more racing today, whichever is later
- 15.3 Notices will be posted no later than 30 minutes after the protest time limit to inform competitors of Room in the Main Clubhouse beginning at the time posted.
- 15.4 Notices of protests by the race committee, technical committee, or protest committee will be posted to inform boats under Rule 61.1(b).
- 15.5 Breaches of SI 10.3, 14, 16 and 17, or NOR 2 Advertising, NOR 16 Diving/Plastic Pools or NOR19 Haul Out Restrictions, will not be grounds for protest by a boat. This changes Rule 60.1(a).
- 15.6 On the last scheduled day of racing a request for redress, based on a protest committee decision shall be delivered no later than 30 minutes after the decision was posted. This changes RRS 62.2:

16 SAFETY REGULATION

- 16.1 Check-out and check-in. Before going on the water and immediately upon arrival ashore and no later than the protest time limit, one crew member of each competing boat shall personally sign a control form at the race office. This control form shall be completed even when returning ashore between races [DP]
- 16.2 Boats not leaving harbour for the days racing shall inform the race office. A boat that retires from a race shall notify the race committee as soon as possible. [DP]
- 16.3 Boats arriving at a point ashore other than the harbour for any reason and that cannot get to the harbour without assistance shall report immediately by telephoning dockmaster Dan Couillard @ 414-403-6921.
- 16.4 Penalties for infringing this SI shall be decided by the jury and may include having to pay the expenses of search and rescue operations. [DP]

17 REPLACEMENT OF CREW OR EQUIPMENT

- 17.1 Substitution of competitors will not be allowed without the prior written approval of the Jury. Such approval may be given in case of injury, illness, or other non-preventable circumstances or when notified at registration. [DP]
- 17.2 Substitution of damaged or lost equipment will not be allowed unless approved by the Race Committee. Requests for substitution shall be made to the Race Committee at the first reasonable opportunity. [DP]

18 OFFICIAL BOATS

Official boats will be marked with Race Committee flags. On-the-water jury will be marked with "Jury" or Juliet flags

19 TRASH DISPOSAL

Trash may be placed aboard support or official boats

20 COMMUNICATIONS.

- 20.1 Except in an emergency, a boat that is racing shall not make voice or data transmissions and shall not receive voice or data communication that is not available to all boats. [DP]
- 20.3 The boats requested by the organizing authority are required to carry onboard cameras, or sound equipment provided by the OA. [DP].

Russ Sobotta
Principal Race Officer
414-507-5635