

2021 Fall Caterwaul Regatta
November 5 - 7, 2021
St. Andrews Bay Yacht Club
Panama City, Florida USA
Sailing Instructions

1 RULES

1.1. This regatta will be governed by the rules as defined in the current Racing Rules of Sailing (RRS), and subject to the current US Sailing Prescriptions except when noted herein and this event's Sailing Instructions per RRS 88.2.

1.2. The US Sailing Prescription to RRS 40 is deleted for this event and replaced with the following: A personal flotation device approved by the US Coast Guard must be worn at all times while afloat, except for brief periods while adjusting clothing.

1.3. The International individual competitors' Class Rules will apply, except as changed by the NOR or the Sailing Instructions.

1.4 If there is a conflict between languages the English text will take precedence.

2 NOTICES TO COMPETITORS

Notices to competitors will be posted on the official notice board(s) which shall be the glass windows (facing the Club deck) of the bar.

3 CHANGES TO SAILING INSTRUCTIONS

Any change to the sailing instructions will be posted before 0900 on the day it will take effect, except that any change to the schedule of races will be posted by 2000 on the day before it will take effect.

4 SIGNALS MADE ASHORE

4.1 Signals made ashore will be displayed at the Club Flag Pole located on the lawn in front of the Club house.

4.2 When flag AP is displayed ashore, '1 minute' is replaced with 'not less than 40 minutes' in the race signal AP.

5 SCHEDULE OF RACES

5.1. The Final Racing Schedule. Social Calendar & Sailing Instructions will be available at check-in.

5.2. The Racing and Social Schedule for the regatta is:

Friday, November 5:

Check-In 1300 to 1500

Practice Race, First Warning 1530

Welcome Reception (light snacks, cash bar) 1800 (StABYC Lounge)

Saturday, November 6:

Check-In 0800 to 0900 Skipper's Meeting 0930 First Warning 11:00, with back-to-back races are scheduled

Regatta Banquet Dinner 18:30 (Upstairs Ballroom)

Sunday, November 7:

First Warning 10:00, with back-to-back races scheduled

No races started after 14:00

After Racing Refreshments (on the lawn)

Awards Presentations as soon as possible following conclusion of racing.

6 CLASS FLAGS

Caterwaul Regatta logo flag

7 RACING AREAS

Attachment A shows the location of racing areas.

8 THE COURSES

8.1 The diagrams in Attachment B show the courses, the order in which marks are to be passed, and the side on which each mark is to be left.

8.2 No later than the warning signal, the race committee signal boat will display the course and approximate compass bearing of the first leg.

9 MARKS

9.1 Mark 1 will be a Green inflatable. If changed it will be a Yellow inflatable.

9.2 Mark 1a will be an Orange ball.

9.3 The Gate will be Orange inflatables.

10 AREAS THAT ARE OBSTRUCTIONS

There are no known obstructions in the race course. Competitors are advised to honor the channel markers when transiting from the smaller bay area near the Yacht Club to the larger open bay areas where the race course will be located. In particular, competitors should be aware of shallow areas towards Red Fish Point at red marker #18, and also towards the white/blue condos at green marker #19.

11 THE START

11.1 Races will be started by using RRS 26

11.2 The starting line will be between a staff displaying an orange flag on the race committee boat and the course side of the starting mark.

11.3 A boat starting later than 4 minutes after her starting signal will be scored Did Not Start without a hearing. This changes Rules A4 and A5.

12 CHANGE OF THE NEXT LEG OF THE COURSE

12.1 To change the next leg of the course, the race committee will lay a new mark (or move the finishing line) and remove the original mark as soon as practicable. When in a subsequent change a new mark is replaced, it will be replaced by an original mark.

12.2 Except at a gate, boats shall pass between the race committee boat signaling the change of the next leg and the nearby mark, leaving the mark to port and the race committee boat to starboard. This changes RRS 28.1.

13 THE FINISH

13.1 The finishing line will be between a staff displaying a blue flag on the race committee boat and the course side of the finishing mark.

13.2 Finished on Course. Stragglers may be finished on course at the discretion of the RC. Boats so finished will receive a finish position.

14 PENALTY SYSTEM

14.1 For all classes RRS 44.1 and 44.2 is changed so that the Two-Turns Penalty is replaced by the One-Turn Penalty.

15 TIME LIMITS AND TARGET TIMES

15.1 Mark 1-time limit for each class is 30 minutes.

15.2 Target time for each class is 45 minutes.

15.3 If no boat has passed Mark 1 within the Mark 1 time limit the race will be abandoned. Failure to meet the target time will not be grounds for redress. This changes RRS 62.1(a).

16 PROTESTS AND REQUESTS FOR REDRESS

16.1 RRS 61.1(a) is changed to add the following requirements for a valid protest: A boat shall Inform the finish line race committee of her intent to file a protest and the sail Number (or other identification) of the protested boat either at the first reasonable opportunity after finishing, or if the protesting boat does not finish, at the first reasonable opportunity, and she must receive confirmation from the Race Committee.

16.2 Protest forms are available at the race office, located in the Club house. Protests and requests for redress or reopening shall be delivered there within the appropriate time limit.

16.3 The protest time limit is 45 minutes after the race committee signal boat has returned to the Club dock.

16.4 Notices will be posted no later than 30 minutes after the protest time limit to inform competitors of hearings in which they are parties or named as witnesses. Hearings will be held in the protest room, located in the second story room of the Club's Sailing Center Building, beginning at the time posted

16.5 Notices of protests by the Race Committee or Protest Committee will be posted to inform boats under RRS 61.1(b).

17 SCORING

17.1 The Low Point System of Appendix A will apply.

17.2 Three races are required to be completed to constitute a series.

17.3 As many races as practicable will be run. There is no maximum number of races. When fewer than six races have been completed, a boat's series score will be the total of her race scores. When six or more races have been complete, a boat's score will be the total of her races scores excluding her worst score.

18 SAFETY REGULATIONS

18.1. Check-out and check-in Procedures: before the warning signal on the first race each day, all boats shall sail by the stern of the race committee signal boat, on starboard, hail her Sail Number and obtain the acknowledgment of the race committee. Boats that fail to check-in will be scored DNS. This changes RRS A5.

18.2. A boat that retires from a race shall notify the race committee as soon as possible. Failure by any competitor to inform the Race Committee that they have retired from racing may result in a 20 percent penalty in the competitor's last completed race. This also changes RRS A5.

18.3 If a boat fails in its obligation to stay safely clear of and yield right of way to all commercial and fishing vessels during the event, then upon becoming aware of such failure, the Race Committee shall disqualify such boat from the event and the boat shall not be allowed to participate in any further races during the event. This changes RRS A5.

19 REPLACEMENT OF CREW OR EQUIPMENT

19.1 Substitution of competitors will not be allowed without prior written approval of the Race Committee or Protest Committee.

19.2 Substitution of damaged or lost equipment will not be allowed unless authorized by the Race Committee or Protest Committee. Requests for substitution shall be made to the committee at the first reasonable opportunity.

20 EQUIPMENT AND MEASUREMENT CHECKS

A boat or equipment may be inspected at any time for compliance with the class rules and sailing instructions. On the water, a boat can be instructed by a race committee equipment inspector or measurer to proceed immediately to a designated area for inspection.

21 BOW NUMBERS

Boats are required to display Bow Numbers on both the port side of the port hull and the starboard side of the starboard hull in accordance with ISAF Regulation 20.4.1.1. Bow numbers shall be placed on each hull as follows: the top edge of the Bow Number shall be located within 2" of the top of the boat's hull, and the leading edge of the Bow Number shall be located within 3" of the forward most point of the boat's hull.

22 ADVERTISING

If provided by the organizing authority, boats and competitors shall display advertising supplied by the organizing authority (the "Logo"). If provided by the organizing authority, boats are required to display the Logo on both the port side of the port hull and the starboard side of the starboard hull in accordance with ISAF Regulation 20.4.1.2.

23 OFFICIAL BOATS

Official boats will be marked as follows: with an Orange Streamer.

24 SUPPORT BOATS

24.1 (a) Team leaders, coaches and other support personnel shall stay outside areas where boats are racing from the time of the preparatory signal for the first class to start until all boats have finished or retired or the race committee signals a postponement, general recall, or abandonment.

24.1 (b) Support boats shall register with the Organizing Authority.

24.2 (c) Support boats are requested to monitor the RC working channel for safety.

25 TRASH DISPOSAL

Boats shall not put trash in the water. Trash may be placed aboard support and race committee boats.

26 GPS ENABLED DEVICES

Electronic devices that provide timing, heading, and heading memory are permitted. Devices that calculate VMG without the use of waypoint data are permitted. Devices that display real-time position or mapping are prohibited.

27 RADIO COMMUNICATION

27.1 Except in an emergency, a boat shall neither make radio transmissions while racing nor receive radio communications not available to all boats. This restriction also applies to mobile telephones. Coach boats are requested to monitor the RC working channel in support of the safety plan.

27.2 Competitors may carry a VHF radio on board during the regatta for use in an emergency.

28 PRIZES

Prizes will be given as follows:

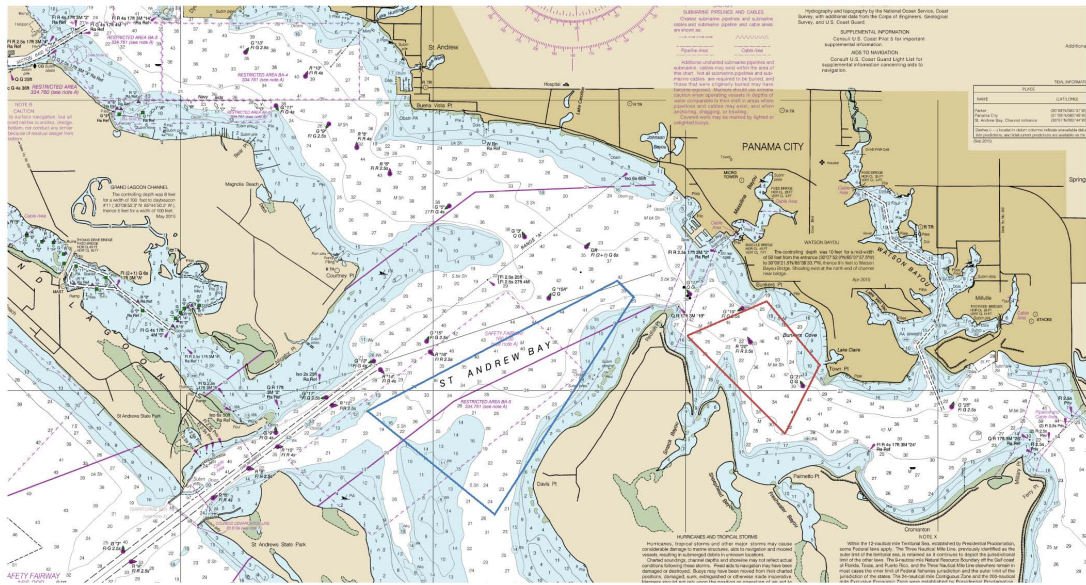
Three deep in each class registered in time

First place overall

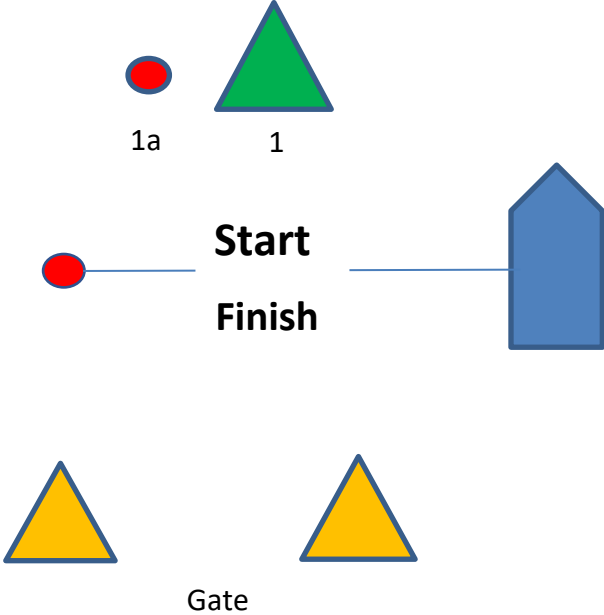
29 DISCLAIMER OF LIABILITY

Competitors participate in the regatta entirely at their own risk. See Rule 4, Decision to Race. The organizing authority will not accept any liability for material damage or personal injury or death sustained in conjunction with or prior to, during, or after the regatta.

ATTACHMENT A - RACING AREAS

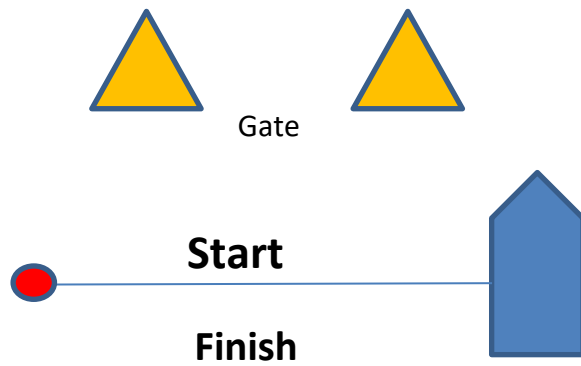


Attachment B: Courses



Courses

- #1 Start,1,1a, Gate, Finish
- #2 Start,1,1a, Gate,1,1a, Gate, Finish
- #3 Start,1,1a, Gate,1,1a, Gate,1,1a, Gate, Finish



Courses

W1 Start,1,1a, Finish

W2 Start, 1,1a, Gate,1,1a, Finish

W3 Start, 1,1a, Gate, 1,1a, Gate, 1, 1a, Finish