



‘True North’

September 25th, 2021

SAILING INSTRUCTIONS

1. RULES

- 1.1. This race will be governed by the rules defined in the current “*The Racing Rules of Sailing*” (“RRS”), including *US Sailing Prescriptions*.
- 1.2. **Rule Changes:** The Finishing Line is changed to be a line between the Port Jefferson Harbor entrance buoys Green 1 and Red 2, PJ1 and PJ2 respectively in the marks list. The ‘finish’ is self-timed. All boats will record their time when crossing the finish line and report them to the Fleet Captain by email or text msg as soon as convenient after crossing.
- 1.3. **Radio:** Each boat will carry a VHF radio capable of sending/receiving on marine channels 16 and 72, and will monitor channel 72 until after all boats have started, as that is the channel the Race Committee will use to coordinate the race.

2. CHANGES TO THE SAILING INSTRUCTIONS

- 2.1. Any change to the sailing instructions will be posted before 1900 the day before the race. These will be posted to the race notice board as described below in ‘COMMUNICATIONS’.
- 2.2. Changes to these Sailing Instructions may be made on the water. The Race Committee will broadcast to all boats on VHF 72.

3. COMMUNICATIONS WITH COMPETITORS

- 3.1. Notices to competitors, including these Sis, NORs, and race status updates, will be posted to the race web site. See ‘Newsroom & Results’, ‘Race Documents’, and ‘Notices’ here:
<https://www.regattanetwork.com/event/23282>
- 3.2. On the water, the race will be coordinated on VHF channel 72 until after all boats have started. After that, use email, voice phone, or text messages to the Fleet Captain.
- 3.3. From the first warning signal until the end of the race, except in an emergency, a boat shall not make voice or data transmissions and shall not receive voice or data communication that is not available to all boats.
- 3.4. Boats retiring from the race should notify the Fleet Captain as soon as practical via email, text, or voice.

4. **CODE OF CONDUCT**

- 4.1. Competitors and support persons shall comply with reasonable requests from race officials.

5. **SIGNALS MADE ASHORE**

- 5.1. Signals made Ashore will be posted on the notice board of the event web page as specified in 'COMMUNICATIONS WITH COMPETITORS' above, especially the 'Notices'. And at or near the PJYC Dock House.
- 5.2. When flag AP is made ashore, '1 minute' is replaced with 'not less than 60 minutes' in RRS 'Race Signals'/'AP' at the end of the RRS book.

6. **SCHEDULE OF RACES**

- 6.1. One race with First Division Warning at 1000.

7. **RACING AREA**

- 7.1. The Racing Start Area is approximately 1.25 nm NE of the Port Jefferson Harbor East Breakwater and the course crosses Long Island Sound to an area between Stratford Point and Penfield Reef. Mark 'SF' will be used as one end of the Start/Finish line, with the Committee Boat at the other end. The Finish will be as specified under 'Rule Changes' above. See Appendix A below for a chart of the area.

8. **COURSES**

- 8.1. Charts of the course area and marks is in Appendix A below.
- 8.2. ALL Marks will be left to PORT unless the RC specifies otherwise.
- 8.3. Unless otherwise stated by the Race Committee, the race will start from a line from mark SF to the Committee Boat. It will then proceed to the first mark designated by the race committee (RC), with a possibility of leaving that mark to either **Port or Starboard as designated by the RC**. It will then proceed to mark 'N' which is 'Red 18' SW of Stratford Point in Connecticut, leaving it to Port as usual, then to mark 'LC' which is 'Little Cows' just before Penfield Reef off Fairfield Beach leaving it to Port, and finally to a finish line between 'PJ1' and 'PJ2' which are the Port Jefferson Harbor entrance buoys 'Green 1' and 'Red 2'.

9. **MARKS**

- 9.1. The possible Marks are listed in Appendix B below with coordinates.

10. THE START

- 10.1. The starting line will be between mark 'SF' and an orange flag on the committee boat.
- 10.2. The race will use the standard Rule 26 starting sequence.
- 10.3. Divisions after the first will have their warnings coincident with the prior division start signal. Aka 'Rolling Starts'.
- 10.4. Boats whose warning signal has not been made shall avoid the starting area during the starting sequence for other divisions.

10.5. Division Flags

First Division:



Second Division:



11. THE FINISH

- 11.1. The finish line will be between the PJ1 and PJ2 marks which are the PJ Harbor Entrance buoys 'Green 1' and 'Red 2'. This changes RRS "Race Signals"/"Other Signals" in the flags section at the end of the RRS. (Which specifies a blue flag)
- 11.2. Boats will self-time their finishes. They will record the time per the definition of *finish* in the RRS and report their finish time to the Fleet Captain via email as soon as convenient.

12. TIME LIMITS

- 12.1. The time limit for each division will be 12 hours from when the first boat in a division *starts* (See definition of *Start* in the RRS).

13. SAFETY REGULATIONS

- 13.1. ALL BOATS MUST CHECKIN by sailing by the stern of the Committee Boat and calling out "<boat name> checking in with # souls on board". Please do not use the Radio for checking in, as calls can 'step on' each other.
- 13.2. A boat that retires from a race shall notify the race committee on VHF 72 at the first reasonable opportunity. Or by email to the Fleet Captain once all boats have started and the RC boat has left the area.

14. RISK STATEMENT

- 14.1. Competitors participate in the regatta entirely at their own risk. See rule 3 of the RRS, Decision to Race. The organizing authority will not accept any liability for material damage or personal injury, or death sustained in conjunction with, prior to, during, or after this event.

15. FURTHER INFORMATION

Contact Dave Hubbard
PJYC Fleet Captain
davechub@gmail.com
1-516-313-7617

APPENDIX A

Course Area Chart

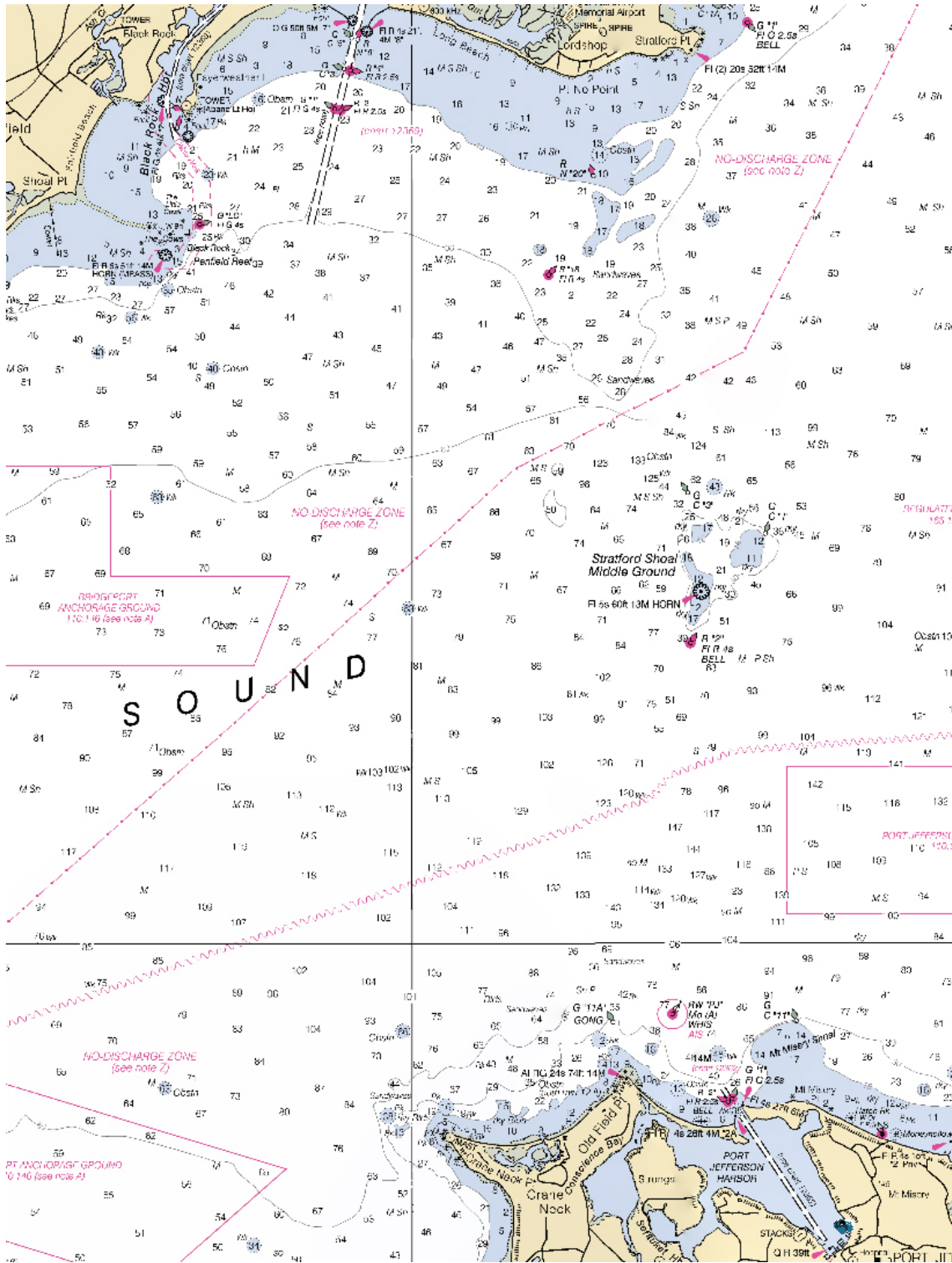
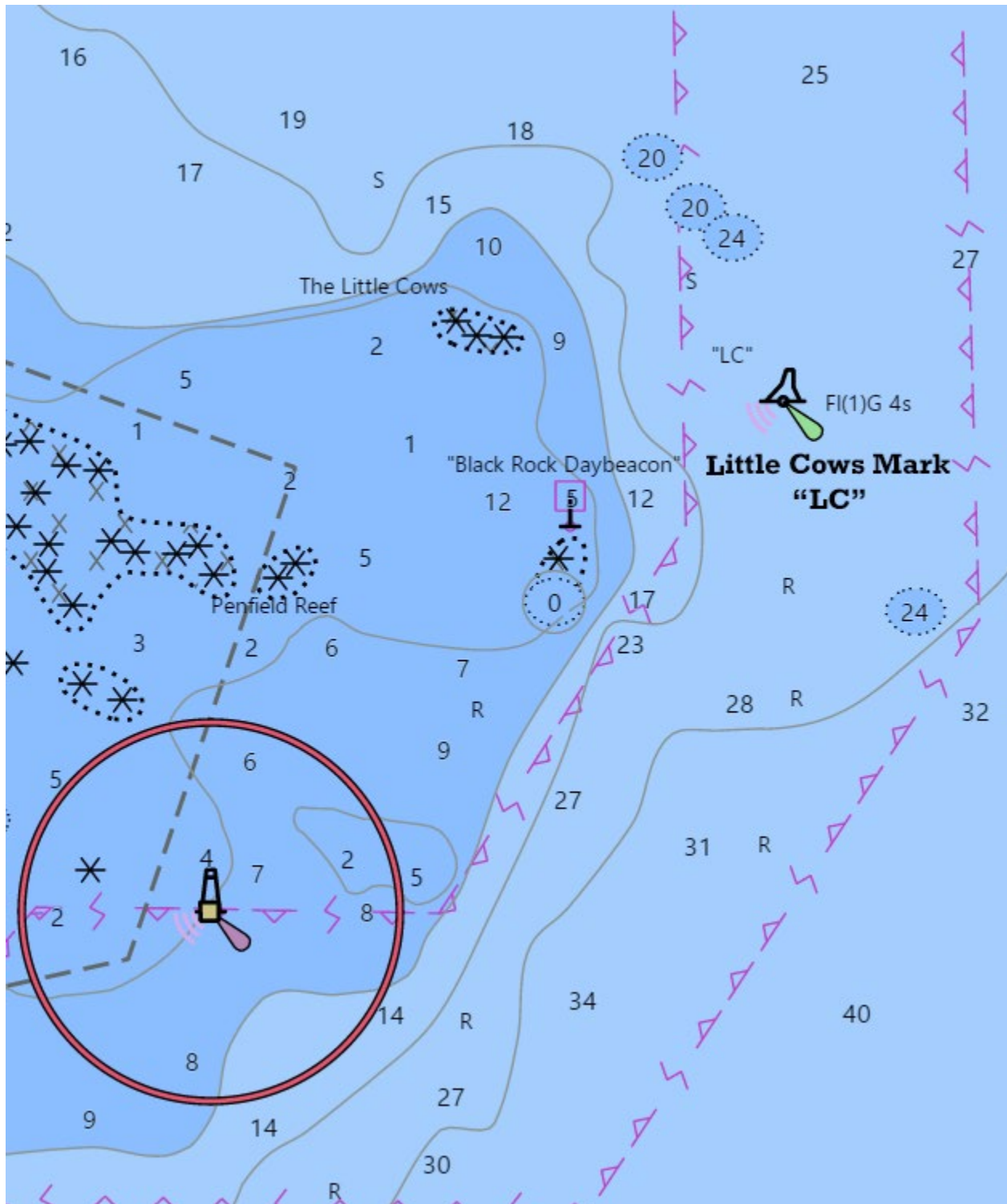


Chart Area for Mark 'LC' – 'Little Cows'



APPENDIX B

Marks

Note 1: The 3 formats are all the same location for each mark, just in the 3 most commonly used notations. Negative longitudes are also called 'West' in some systems.

Example: '-73 04.210' is the same as '73 04.210W'.

Note 2: Marks 'SF' and 'A' thru 'H' are the 'Olympic Circle' marks used for the Tuesday Night Series. Marks 'I' thru 'N' and 'PJ1', 'PJ2', and 'LC' are government navigation buoys.

| Name | Decimal Degrees | | Decimal Minutes | | Decimal Seconds | |
|------------------------------|-----------------|-------------|-----------------|------------|-----------------|---------------|
| | Latitude | Longitude | Latitude | Longitude | Latitude | Longitude |
| SF (Start/Finish) | 40.9823507 | -73.0701660 | 40 58.941 | -73 04.210 | 40 58 56.463 | -73 04 12.598 |
| A | 40.9904476 | -73.0726919 | 40 59.427 | -73 04.362 | 40 59 25.611 | -73 04 21.691 |
| B | 40.9894241 | -73.0643671 | 40 59.365 | -73 03.862 | 40 59 21.927 | -73 03 51.721 |
| C | 40.9842568 | -73.0594400 | 40 59.055 | -73 03.566 | 40 59 03.324 | -73 03 33.984 |
| D | 40.9779731 | -73.0607966 | 40 58.678 | -73 03.648 | 40 58 40.703 | -73 03 38.868 |
| E | 40.9742537 | -73.0676408 | 40 58.455 | -73 04.058 | 40 58 27.313 | -73 04 03.507 |
| F | 40.9749757 | -73.0780878 | 40 58.499 | -73 04.685 | 40 58 29.913 | -73 04 41.116 |
| G | 40.9804436 | -73.0808914 | 40 58.827 | -73 04.853 | 40 58 49.597 | -73 04 51.209 |
| H (G 11) | 40.9867283 | -73.0795361 | 40 59.204 | -73 04.772 | 40 59 12.222 | -73 04 46.330 |
| I (G 11a) | 40.9869567 | -73.1215050 | 40 59.217 | -73 07.290 | 40 59 13.044 | -73 07 17.418 |
| J (PJ Approach RW) | 40.9878761 | -73.1074128 | 40 59.273 | -73 06.445 | 40 59 16.354 | -73 06 26.686 |
| K (R 2 Middle Ground) | 41.0511119 | -73.1034072 | 41 03.067 | -73 06.204 | 41 03 04.003 | -73 06 12.266 |
| L (G 9 Rocky Pt) | 40.9928767 | -72.9647136 | 40 59.573 | -72 57.883 | 40 59 34.356 | -72 57 52.969 |
| M (G 1 NE of Middle Ground) | 41.0697758 | -73.0865400 | 41 04.187 | -73 05.192 | 41 04 11.193 | -73 05 11.544 |
| N (R 18 SE of Stratford Pt.) | 41.1136428 | -73.1359492 | 41 06.819 | -73 08.157 | 41 06 49.114 | -73 08 09.417 |
| LC (Little Cows) | 41.1222250 | -73.2144489 | 41 07.334 | -73 12.867 | 41 07 20.010 | -73 12 52.016 |
| PJ1 (PJ Green 1) | 40.9734208 | -73.0939856 | 40 58.405 | -73 05.639 | 40 58 24.315 | -73 05 38.348 |
| PJ2 (PJ Red 2) | 40.9729147 | -73.0948975 | 40 58.375 | -73 05.694 | 40 58 22.493 | -73 05 41.631 |