



*Hosted by Venice Youth Boating Association  
April 30th, 2022  
1330 Tarpon Center Drive, Venice, FL*

### Notice of Race (NoR)

The Organizing Authority (OA) for this regatta is the Venice Youth Boating Association ("VYBA"). The event will be held at the Venice Yacht Club ("VYC")

#### 1 RULES

- 1.1 The event is governed by the rules as defined in *The Racing Rules of Sailing*.
- 1.2 No competitor shall use, either on or off the water, alcoholic beverages (beer, wine or distilled spirits), nicotine products, or use any controlled substance (marijuana, cocaine, etc.) the possession of which is unlawful. This prohibition is in effect during the entire event, from date and time of arrival through date and time of departure from the venue. Penalties for a violation of the prohibition may range from a reprimand to dismissal from the regatta. A hearing may be held in accordance with the RRS.

#### 2 SAILING INSTRUCTIONS

- 2.1 Sailing Instructions will be available digitally only on Regatta Network.

#### 3 COMMUNICATION

- 3.1 The online official notice board is located at [https://www.regattanetwork.com/event/23380#\\_newsroom](https://www.regattanetwork.com/event/23380#_newsroom).
- 3.2 All support boats shall carry a VHF radio capable of communicating on various channels. The channels to be used for each racing circle shall be announced in the Sailing Instructions and amended in the competitors meetings as needed.



- 3.3 While racing, except in an emergency, a boat shall not make voice or data transmissions and shall not receive voice or data communication that is not available to all boats.
- 4 ELIGIBILITY AND ENTRY
- 4.1 The event is open to all boats of the Club 420, ILCA 4, ILCA 6 and Optimist class(es).
- 4.2 Only class legal ILCA hulls **and The Laser Class** hulls will be permitted. Blades, sails and spars must be class legal. All boats must conform to the ILCA class rules for all sail handling systems.
- 4.3 The Optimist class will be divided into a Green Fleet for Novice skippers and an open Red/White/Blue Fleet ("RWB") for this event.
- 4.4 The Optimist RWB shall race and be scored as one fleet.
- 4.5 Boats may enter the event by registering online at [https://www.regattanetwork.com/clubmgmt/applet\\_registration\\_for\\_m.php?regatta\\_id=23380](https://www.regattanetwork.com/clubmgmt/applet_registration_for_m.php?regatta_id=23380).
- 4.6 To be considered an entry in the event, a boat shall complete all registration requirements and pay all fees.
- 4.7 (a) The early entry fee shall apply until 2359 hours on April 21st.  
(b) The standard entry fee shall apply from the close of the early entry period until 2359 hours on April 27th.  
(c) No entries will be accepted after April 27th.  
(d) Entrants that register after April 20th will not be guaranteed a regatta shirt
- 4.8 Caps on registration and waitlists may apply at the discretion of the VYBA leadership team. Such caps would be communicated promptly via the event's Regatta Network website.



## 5 FEES

5.1 Entry fees are as follows:

Class	Early Entry Fee	Standard Fee
Optimist Green, Optimist RWB, ILCA 4, and ILCA 6	\$55	\$70
Club 420	\$100	\$115

5.2 Entry fees include a light breakfast, lunch, and t-shirt (refer to 4.7(d))

## 6 ADVERTISING

6.1 Boats may be required to display advertising chosen and supplied by the organizing authority.

## 7 SCHEDULE

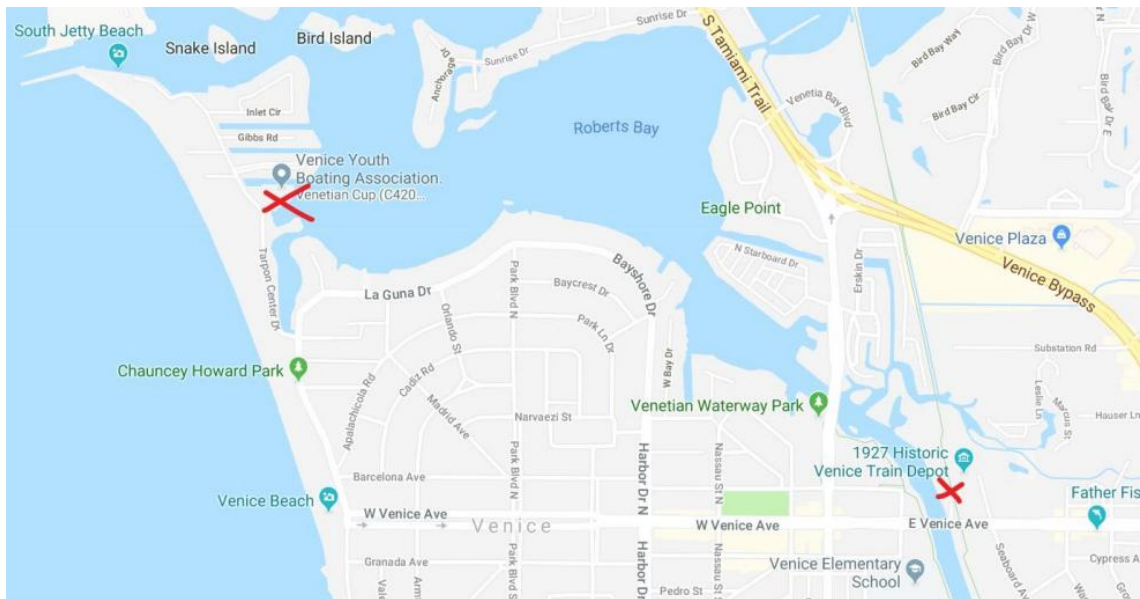
7.1

Event	Location	Start Time	End Time
Check-in	Tent next to Venice Yacht Club	0800	0900
Competitors Meeting - Harbor Start to Follow	Venice Yacht Club Tiki Deck	0900	
First Warning Signal - Optimist Green Fleet	Roberts Bay	1000	
First Warning Signal - All Other Classes	Gulf of Mexico	1030	
Deadline for Last Warning Signal (All Fleets)		1530	
Awards Ceremony	Venice Yacht Club Tiki Deck	As soon as possible following completion of racing	



## 8 VENUE

- 8.1 NoR Addendum 1 shows the plan of the event venue.
- 8.2 Coach, support, and spectator boats are required to launch from the Venice Train Depot Park.
- 8.3 To reach the Venice Train Depot Park one must travel West on Venice Ave towards the Island from the Mainland, do NOT go over the bridge but stay to the right and follow signs for the park.
- 8.4 To reach the VYC by water from the Venice Train Depot Park, travel North on the ICW for 1.5 miles. VYC is the large white building with the blue roof. Coach boats can dock at the Higel Park docks just to the SW of the VYC.



*Location of The Venice Train Depot Park Relative to VYBA*

- 8.5 Additional Parking: Parking available at Graser Park located at the intersection of The Esplanade and Barcelona Ave. (746 Barcelona Ave, Venice, FL 34285) and at the South Jetty located at the end of Tarpon Center Dr
- 8.6 NoR Addendum 2 shows the location of the racing areas.



8.7 Lasers, C420s, and RWB Optis will race in the Gulf of Mexico SOUTH of the Venice Inlet. All regatta participants are urged to exercise caution when entering and exiting the Gulf of Mexico especially while passing through the jetties at Venice Inlet.

8.8 All Sailing Areas are subject to change depending on weather and sea conditions.

## 9 COURSES

9.1 The courses are described in NoR Addendum 3

9.2 The marks shall be described in the Sailing Instructions

## 10 SCORING

10.1 One race is required to be completed to constitute a series.

10.2 (a) When fewer than 5 races have been completed, a boat's series score will be the total of her race scores.

(b) When 5 or more races have been completed, a boat's series score will be the total of her race scores excluding her worst score.

10.3 Rule A5.3 applies.

## 11 RISK STATEMENT

11.1 RRS 3 states: 'The responsibility for a boat's decision to participate in a race or to continue to race is hers alone.' By participating in this event each competitor agrees and acknowledges that sailing is a potentially dangerous activity with inherent risks. These risks include strong winds and rough seas, sudden changes in weather, failure of equipment, boat handling errors, poor seamanship by other boats, loss of balance on an unstable platform and fatigue resulting in increased risk of injury. **Inherent in the sport of sailing is the risk of permanent, catastrophic injury or death by drowning, trauma, hypothermia or other causes.**

## 12 PRIZES

12.1 Prizes will be given as follows:

Trophies will be awarded for 1st, 2nd and 3rd in each fleet. Participation medals will be given to all competitors in the Optimist Green Fleet.



### 13 PHOTOGRAPHER & MEDIA RIGHTS

- 13.1 Competitors give absolute right and permission for any photographs or video footage taken of them or their competing boat to be published in any media whatsoever; for editorial or advertising purposes, or to be used in press information. VYBA reserves the right to fly a drone during the racing events, however NO footage will be available to any coaches until after the full regatta events have ended. No other drones will be allowed in the sailing areas.

### 19 DISCLAIMER OF LIABILITY

- 19.1 Competitors participate in the regatta entirely at their own risk. The organizing authority, Venice Youth Boating Association, Inc., Venice Yacht Club, Sarasota County, and the City of Venice will not accept any liability for material damage, personal injury or death sustained in conjunction with, prior to, during, or after the regatta.

### 20 FURTHER INFORMATION

*Nick Nelson, VYBA Executive Director, DirectorVYBA@gmail.com, 941-468-1719*





*NoR Addendum 1: Map of Event Venue with Rigging & Launching Areas*

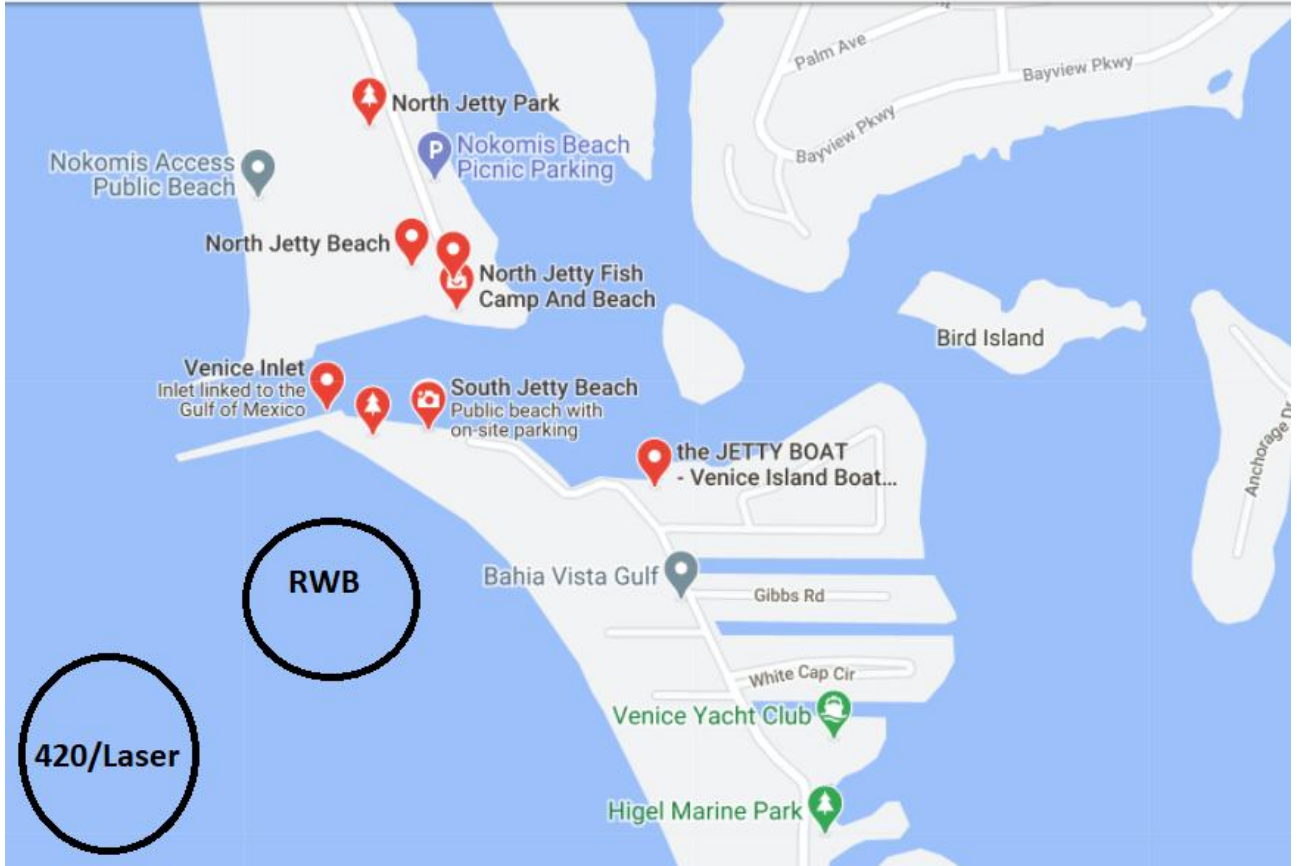




*NoR Addendum 2: Location of Racing Areas*





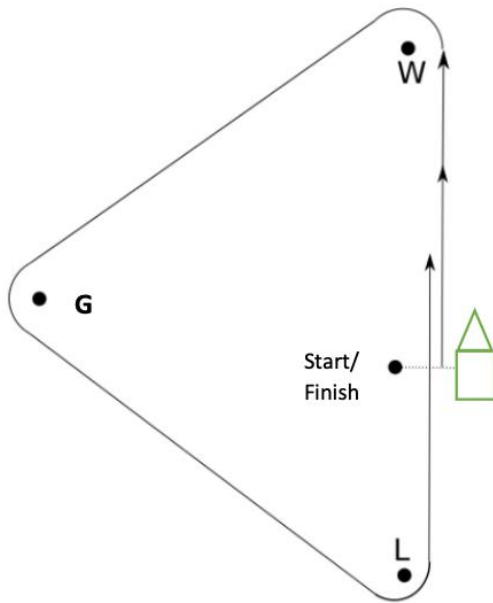




*NoR Addendum 3: Courses*

Green Fleet Opti Courses

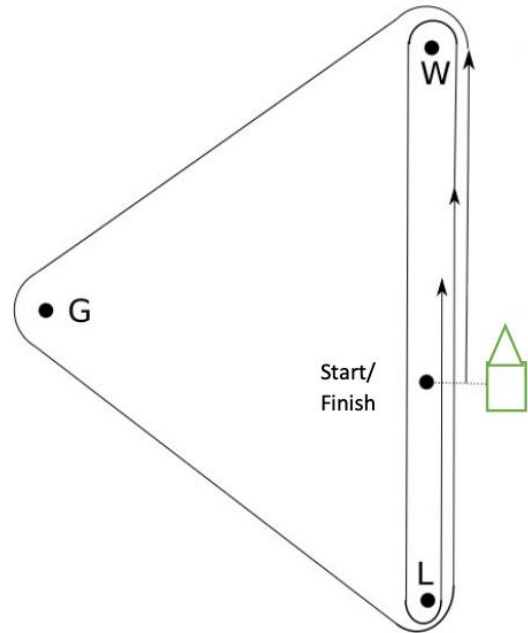
COURSE A



Course A-

Start – W – G – L – Finish

COURSE B

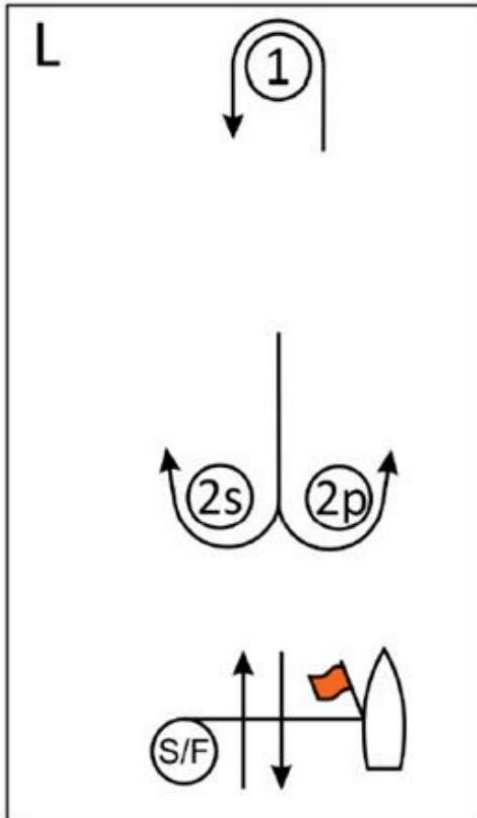


Course B-

Start – W – G – L – W – L – Finish



RWB Opti Course

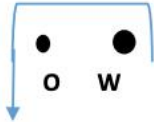


Course L – Windward/Leeward, Leeward Finish	
Signal	Mark Rounding Order
L2	Start – 1 – 2s/2p – 1 – Finish
L3	Start – 1 – 2s/2p – 1 – 2s/2p – 1 – Finish
L4	Start – 1 – 2s/2p – 1 – 2s/2p – 1 – 2s/2p – 1 – Finish

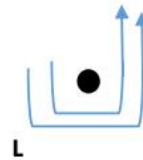
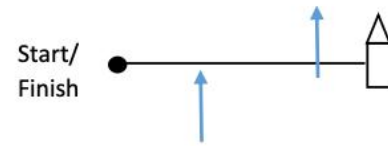
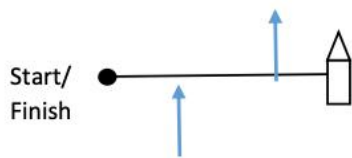
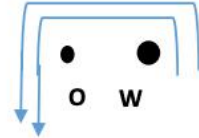


## Laser/C420 Courses

Course A (W2) : Closed Gate



Course B (W3) : Closed Gate



Course A- (W2)

Start – W – O – L – Finish

Course B- (W3)

Start – W – O – L – W – O – L – Finish