

2021-22 Winter Series

Viper 640

January 15-16, 2022

The Organizing Authority is the Sarasota Sailing Squadron



Sailing Instructions

1 RULES

The event will be governed by the *rules* as defined in *The Racing Rules of Sailing* (RRS) and the class rules for the Viper 640 Class Association.

2 NOTICES TO COMPETITORS

- 2.1 Notices to competitors will be posted on the notice board located near the Sarasota Sailing Squadron ("SSS") office.
- 2.2 The race committee will use VHF channel **72** or **11** to communicate with competitors on the water. This will be confirmed at the competitors' meeting.

3 CHANGES IN SAILING INSTRUCTIONS

Any changes will be posted before 0800 hours on the day it will take effect, except that any change in the schedule of races will be posted before 2000 hours the day before the change is to take effect.

4 SIGNALS MADE ASHORE

- 4.1 Signals made ashore will be displayed from the SSS flagpole on the south side of the screened porch.
- 4.2 When flag AP is displayed ashore, "1 minute" is replaced by "not less than 45 minutes" in Race Signals. This changes RRS Race Signals.

5 RACING AREA

The racing area will be on Sarasota Bay approximately 1-2 miles north of SSS, as shown in Attachment I.

6 CLASS FLAG

The class flag will be a white flag with the class insignia.

7 SCHEDULE

7.1

Saturday January 15, 2022	
Registration	0900-1000
Competitors' Meeting	1030
Warning Signal for first race of the day	1155
Sunday January 16, 2022	
Warning signal for first race of the day	0955
No warning signal after:	1500
Awards	As soon as practicable after racing

7.2 A maximum of 10 races will be run for the event.

8 MARKS

8.1 The weather mark will be a yellow tetrahedron. If an offset mark is set, it will be a small ball type mark. If a change mark is set for the weather mark, it will be a orange tetrahedron. A subsequent change mark in the same race will be the original yellow tetrahedron.

8.2 The leeward marks and/or gate marks will be yellow tetrahedrons.

8.3 Except as provided in 8.4 below, the starting mark will be a orange tetrahedron. The finish mark will be a small ball type mark located as indicated in the provided course diagram.

9 THE COURSES

9.1 The diagrams and descriptions in Attachment II show the courses, including the approximate angles between legs and the order in which marks are to be passed.

9.2 After a change of course, an offset mark (1a) may not be used.

9.3 If only one leeward mark is present it shall be rounded to port.

9.4 The course identifier, approximate magnetic bearing and distance in nautical miles to the first mark will be displayed from the race committee signal vessel prior to the warning signal for each race.

An example is shown below:

5	Five legs, finishing to windward
270	Approx magnetic bearing to windward mark
1.2	1.2 nm to windward mark

10 THE START

10.1 The starting line will be between a staff displaying an orange flag on the race committee signal vessel at the starboard end and either (a) the course side of the starting mark or (b) a staff displaying an orange flag on a vessel at the port end.

10.2 If any part of a boat's hull is on the course side of the starting line at her starting signal and she is identified, the race committee will attempt to hail her sail number or bow number. Failure to hail her number, failure of her to hear such a hail, or the order in which boats are hailed will not be grounds for a redress for request. This changes RRS 62.1(a).

10.3 A boat that does not start within five minutes after her starting signal will be scored Did Not Start without a hearing. This changes RRS A5.1 and A5.2.

11 THE FINISH

11.1 The finishing line will be between a staff displaying an blue flag on a race committee vessel and the course side of the finishing mark.

11.2 Flag A displayed with no sound while boats are finishing means "no more racing today."

12 TIME LIMITS

- 12.1 The time limit for the first boat to sail the course and finish is 90 minutes.
- 12.2 Boats still racing more than 30 minutes after the first boat sails the course and finishes will be scored TLE (Time Limit Expired) without a hearing. The score will be 2 points more than the last boat to finish. This changes RRS 35, A2, A4, A5 and A10.

13 PENALTY SYSTEM

- 13.1 The first two sentences of rule 44.1 are changed to: "A boat may take a One-Turn Penalty when she may have broken a rule of Part 2 or rule 31 while *racing*. However, when she may have broken a rule of Part 2 while in the *zone* around a *mark* other than a starting *mark*, her penalty shall be a Two-Turns Penalty."
- 13.2 Post-Race Penalties (Appendix T1) will apply.
- 13.3 Arbitration will be offered per Appendix T.

14 PROTESTS AND REQUESTS FOR REDRESS

- 14.1 Protest forms are available in the SSS Office. Protests shall be delivered there within the protest time limit which is **45** minutes after the race committee finish boat docks after the last race of the day.
- 14.2 The race committee will post a list of penalties being assigned by the race committee prior to the end of protest time limit. The deadline for requesting redress based on these scores will be either 30 minutes after posting of the penalty notice or the protest time limit, whichever is later. This changes RRS 62.2.
- 14.3 Notices will be posted promptly after the receipt of a protest or a request for redress to inform competitors of hearings in which they are parties or named as witnesses. Hearings will be held in the SSS Office in approximately the order of receipt beginning as soon as possible after their receipt.
- 14.4 On the last day of each individual event a request for redress based on a jury decision shall be delivered no later than 30 minutes after the decision was posted, changing RRS 62.2.

15 SAFETY

- 15.1 Prior to the warning signal for the first race of each day in which it intends to compete, each boat is requested to check in by sailing by the race committee signal boat and hailing its sail number.
- 15.2 A boat retiring from a race or leaving the racing area early shall promptly notify the race committee either by hail, by VHF radio, or by telephone to the SSS office: 941-388-2355.

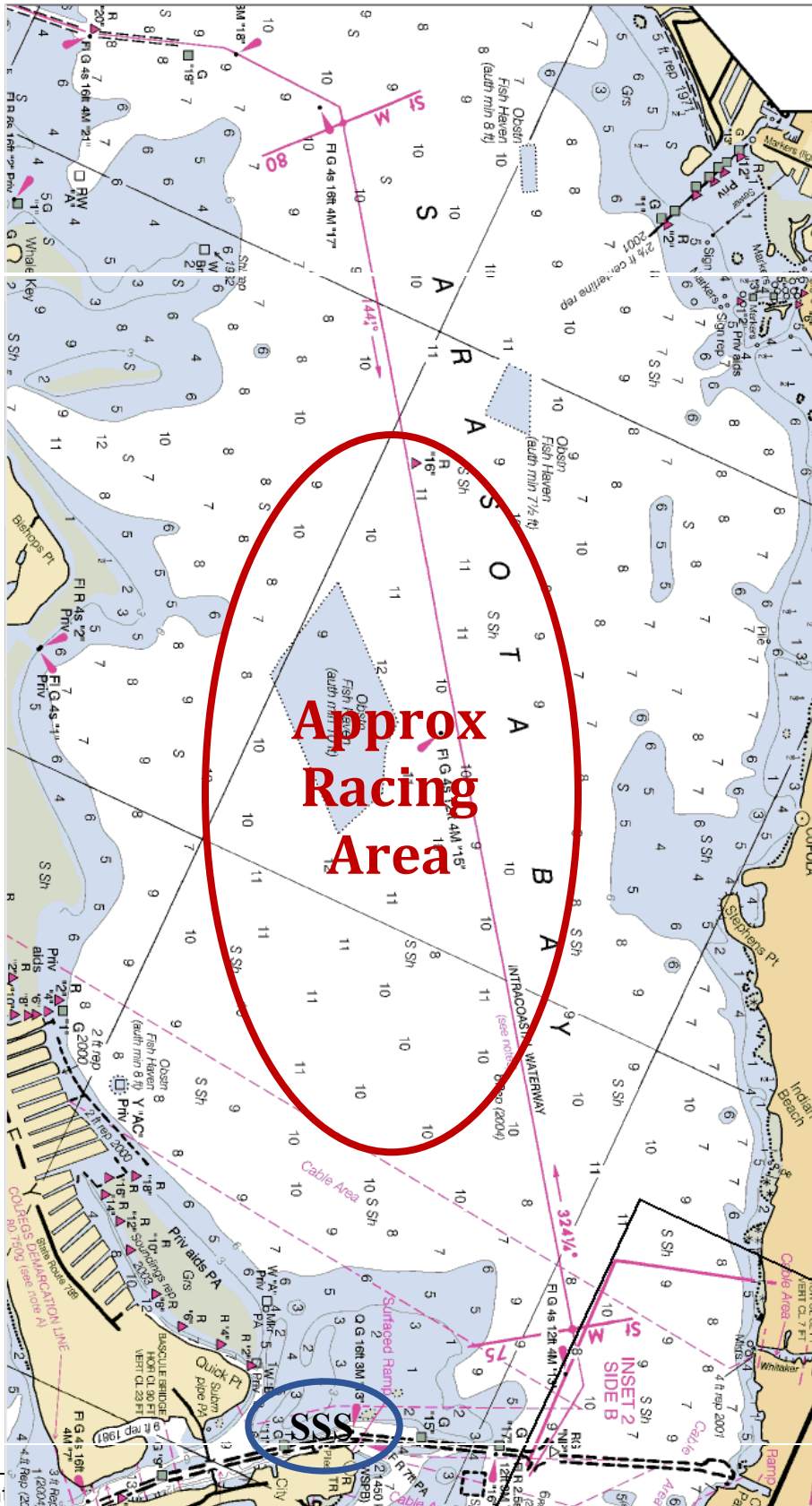
16 RADIO COMMUNICATION

A boat shall neither make nor receive radio, phone or other data transmissions while racing not available to all boats, except in an emergency

17 SCORING

- 17.1 For each individual event:
- 17.1.1 If 5 or fewer races are completed, a boat's score for the individual event will be the total of her race scores, and if 6 or more races are completed, a boat's individual event score will be the total of her scores excluding her worst score. This changes RRS A4.
- 17.1.2 One completed race is necessary to constitute an individual event, or regatta.
- 17.2 Winter Series scoring for **Viper 640**:
- 17.2.1 For the Vipers 640 series scoring purposes, any boat that competes in at least one of the series events will also be scored in the entire series. A boat's series score will be her total score, including all races not sailed in the series, excluding her worst 30% (rounded to the next higher whole number) of race scores. This changes RRS A2.

Attachment I – Approximate Racing Area

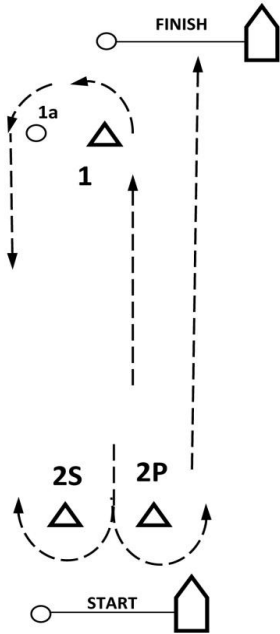


Attachment II –Course Diagrams

Course 3: START – 1 – 1a – 2P/2S –FINISH
 (1 ½ laps / 3 legs, upwind finish)

Course 5: START – 1 – 1a – 2P/2S – 1 – 1a – 2P/2S – FINISH
 (2 ½ laps / 5 legs, upwind finish)

Mark 2 may be either a gate or a single mark left to port



Course 4: START – 1 – 1a – 2P/2S – 1 – 1a – FINISH
 (2 laps / 4 legs, downwind finish)

Course 6: START – 1 – 1a – 2P/2S – 1 – 1a – 2P/2S – 1 – 1a – FINISH
 (3 laps / 6 legs, downwind finish)

Mark 2 may be either a gate or a single mark left to port

