



**2021-22 “Still Ain’t Over” Midwinter Series  
SAILING INSTRUCTIONS**

**1. Rules**

- 1.1. The regatta will be governed by the rules as defined in *The Racing Rules of Sailing 2021-2024 (RRS)*.
- 1.2. RRS 40 will be changed as follows: All competitors are required to wear lifejackets or other adequate personal buoyancy while racing. The “Y” flag will not be displayed.
- 1.3. Appendix T, Section A, T1 shall apply: The first two sentences of RRS 44.1 are changed to: ‘A boat may take a One-Turn Penalty when she may have broken a rule of Part 2 or RRS 31 while *racing*. However, when she may have broken a rule of Part 2 while in the *zone* around a *mark* other than a starting *mark*, her penalty shall be a Two-Turns Penalty.

**2. Entry**

- 2.1. Eligible boats shall complete registration online in accordance with the Notice of Race: <http://www.regattanetwork.com/event/23438>
- 2.2. All keel boats are invited to participate. Each boat shall have a 2021 Northern California PHRF certificate.
- 2.3. Boats without a 2021 Northern California PHRF handicap certificate will be assigned a PHRF rating by the Race Committee.
- 2.4. One Design Fleets will be made at the discretion of the Organizing Authority.

**3. Signals Made Ashore**

- 3.1. Signals made ashore will be displayed from the Mast on the South Beach Yacht Club Clubhouse upper deck.
- 3.2. When the AP flag is displayed from the mast, “1” minute is replaced by “not less than 30 minutes”.

**4. Communications with Competitors**

- 4.1. Official Notices will be posted on the series electronic bulletin board: <http://www.regattanetwork.com/event/23438>  
Changes to the Sailing Instructions will be posted by 1000 on the day they are to take effect.
- 4.2. A working and monitored VHF radio is required to participate in this series.
- 4.3. **The VHF radio channel for each race will be displayed from a digital board on the aft-facing upper deck railing of the signal boat.**
- 4.4. **The VHF channel will be 78 unless a conflict with other users arises. Alternate channels may be 68, 71 or 72.**

4.5. Communication from the Race Committee shall not be considered outside help. This changes RRS 41.

## 5. Number and Schedule of Races:

5.1. Five race days are planned, with up to two races per day: **11/20, 12/18, 1/22, 2/26, 3/19**

5.2. The scheduled time for the first Warning Signal is **1300 hours**

5.3. Time permitting, a second race each day will be announced by VHF radio.

## 6. Racing Area

6.1. The racing area will be in the South Bay waters of San Francisco Bay.

## 7. Courses & Marks

7.1. Courses, mark descriptions and a chartlet are described in Attachment One, "Official Description of Marks and Courses".

7.2. No later than the Warning Signal, a code flag(s) will be displayed from the Race Committee Boat designating the course to be sailed.

7.3. No later than the warning signal, a flag designating the mark rounding direction will be displayed from the signal boat.

7.3.1. If a **red flag** is displayed, all temporary marks, except for gate (G), shall be rounded to port.

7.3.2. If a **green flag** is displayed, all temporary marks, except for gate (G), shall be rounded to starboard.

7.3.3. Absence of a rounding flag when temporary marks are set, is a race committee error and should be called to the attention of the race committee.

7.4. Mark G will be a gate. If the race committee is unable to place both sides of the gate, a single leeward mark will be set, which is to be rounded in the same direction as described in 7.3.

7.5. The windward (W) and reaching(R) marks are to be sailed as a pair (W-R), in the direction displayed on the signal boat as described in 7.3. W and R are never to be "circled" individually. The rounding flag is the controlling factor, not the size or shape of the marks.

## 8. Starting Order

8.1. The intended starting order is as follows, but may be altered at the discretion of the PRO.

Starting Order	Division	Division Flag
1300 Warning	Spinnaker	D (Delta)
	Non-Spinnaker	E (Echo)

## 9. The Start

9.1. The starting line will be between a staff displaying an orange flag on the signal boat and a temporary orange mark designated as T1. In the case that T1 is not set, the starting line pin shall be YRA mark "SC1".

9.2. Each boat is requested to **sail by** the committee boat prior to the first warning to check in. **There will be no radio check-in. Requests for check-in confirmation by radio will be ignored.**

9.3. The Race Committee reserves the right and option to combine fleets into a single start, in which case class flags will be flown simultaneously. Scoring will be by designated fleets.

9.4. A boat starting later than 4 minutes after her start signal will be scored DNS without a hearing. This changes RRS A4 and A5.

## **10. The Start Sequence – This changes RRS 26**

- 10.1. Course number may be displayed by digital board and/or by flags.
- 10.2. Rolling starts will not be used.

## **11. Recalls**

The Race Committee may hail the sail numbers(s) of the boat(s) identified On Course Side (OCS) of the starting line at the starting signal. **The failure of a hail, the failure of a boat hearing the hail or the order of the hails shall not be grounds for redress. This changes RRS 62.1(a).**

## **11. Change of Course after the Start**

To change the next leg of the course, the race committee will move the original mark (or move the finishing line) to a new position.

## **12. The Finish**

- 12.1. The finish line shall be announced by VHF radio.
  - 12.1.1 If two races are likely, due to wind and schedule, the first race will finish at the starting line.
  - 12.1.2 The second or only race of the day will be the entrance to McCovey Cove, between the north-eastern corner of Pier 48 and the green channel marker FL G 2.5s “PA”.
- 12.2. Boats finishing in the cove after sunset are requested to shine a light on their sail number when approaching and crossing the finish line.
- 12.3. Boats retiring before finishing shall notify the Race Committee as soon as practical either on the race VHF channel or 925-209-3081.

## **13. Restricted Areas**

Boats whose preparatory signal has not been made shall keep clear of any boat whose preparatory signal has been made.

## **14. COMMERCIAL TRAFFIC AND SAFETY**

Boats shall not impede the passage of commercial vessels and shall comply with the USCG Navigation Rules. Any boat observed by the race committee to be in violation of this instruction may be scored DNF without a hearing. This changes RRS 63.1.

## **15. Time Limits**

- 15.1. No race shall be started after 1500 hours.
- 15.2. A boat failing to finish within 45 minutes after the first boat in her division sails the course and finishes will be scored “DNF” by the RC. This changes RRS 35, A4 and A5.
- 15.3. The time limit for the first boat in each division to sail the course and finish shall be two hours.
- 15.4. For races finishing in the cove, the Race Committee will be on station at the Finish Line until 1700. Boats finishing later than 1700 hours shall take their own finishing time and

the names of surrounding boats, where possible, and report it to the Race Committee no later than 1900 hours.

## **16. Scoring**

- 16.1. Time on Time corrections shall be used; corrected times will be calculated to the nearest second.
- 16.2. Fleet and division assignments is at the sole discretion of the Race Committee.
- 16.3. Five completed races constitute a series.
- 16.4. RRS A5.3 will apply.
- 16.5. There will be one excluded score if 5 races are completed, and a second excluded score if 10 races are completed.

## **17. PROTESTS AND REQUESTS FOR REDRESS**

- 17.1. Protests and requests for redress may be written on Standard US Sailing Protest Forms available from the Race Committee. Protests and Requests for Redress for all divisions shall be delivered to a Race Committee representative no later than 2000 hours on the day of the race.
- 17.2. Unless otherwise posted, the protest will be heard the Thursday following the race being protested at 1900 in the office at South Beach Yacht Club. This shall serve as proper notification per RRS 63.2.
- 17, 3. Except for RRS 69 and at the discretion of the Protest Committee Chair, hearings will take place as scheduled, with or without the presence of all parties.

## **18. Awards**

- 18.1. Prizes will be awarded after each race for the first place winner in each division.
- 18.2. Prizes must be picked up by the end of the next race.

### Attachment 1 – Official Description of Marks and Courses

Reference Sailing Instruction 7.3 for rounding direction for temporary marks in courses 8-19.

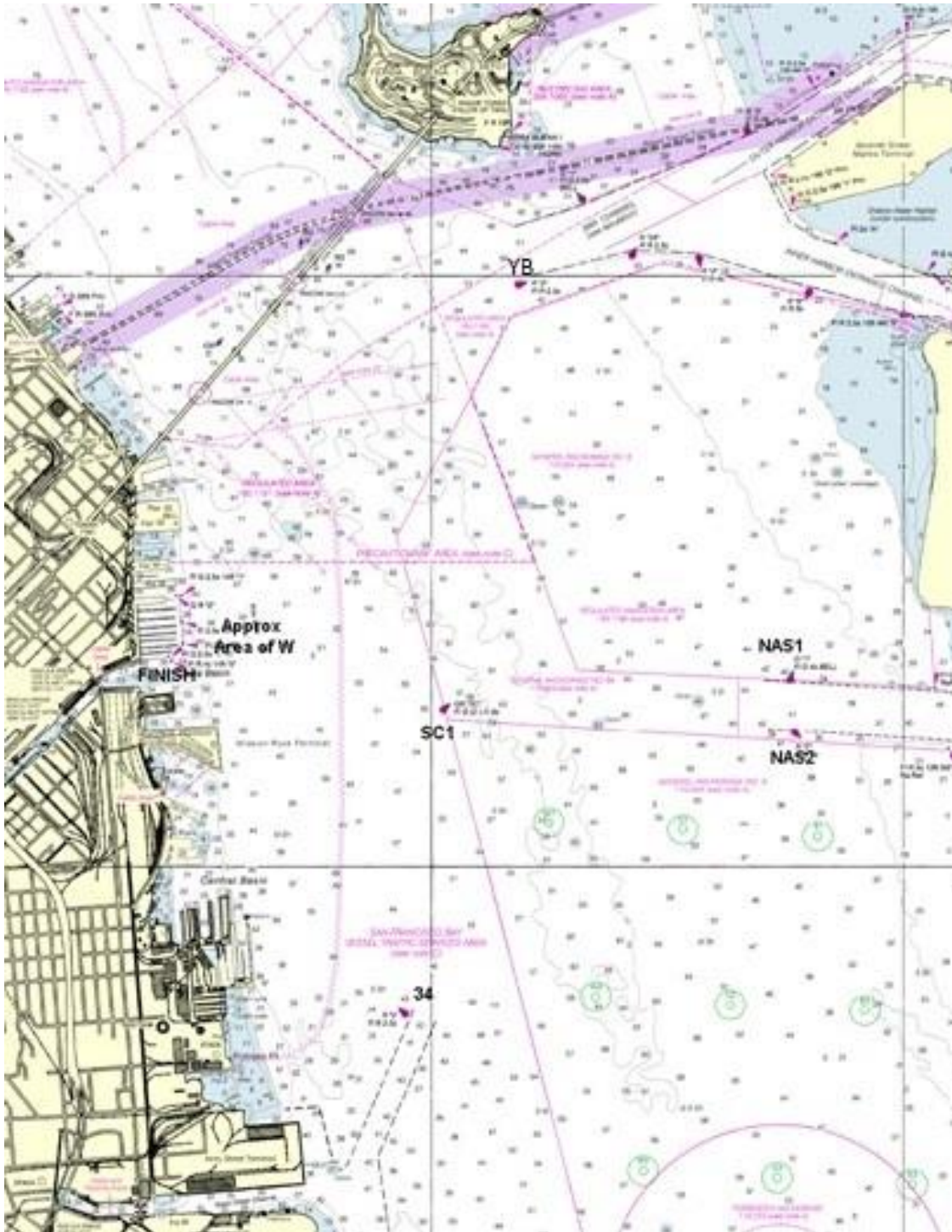
Course #	Marks and rounding order	Approx. Distance
1	Start -> AS1(p) -> 34(p) -> SC1(p) -> Finish	4.1
2	Start -> AS1(p) -> 34(p) -> SC1(p) -> 34(p) -> SC1(p) – Finish	6.35
3	Start -> AS1(p) -> 34(p) -> SC1(p) -> AS1(p) -> SC1(p) -> Finish	6
4	Start -> AS1(p) -> 34(p) -> NAS1(p) -> Finish	6.85
5	Start -> AS1(p) -> NAS1(p) or NAS2(s) -> Finish	7
6	Start -> AS1(p) -> SC1(p) -> AS1(p) -> SC1(p) -> Finish	4.7
7	Start -> AS1(p) -> YB(p) -> Finish	5
8	Start -> W -> R -> YB(p) -> Finish	4.2
9	Start -> W -> R -> SC1(p) -> YB(p) -> Finish	5
10	Start -> W -> R -> NAS1(p) or NAS2(s) -> Finish	7.15
11	Start -> W -> R -> NAS1(p) or NAS2(s) -> AS1(p) -> SC1(p) -> Finish	9.15
12	Start -> W -> R -> SC1(p) -> Finish	3.5
13	Start -> W -> R -> SC1(p) -> W -> R -> SC1(p) -> Finish	5.8
14	Start -> W -> R -> SC1(p) -> W -> R -> SC1(p) -> W -> R -> SC1(p) -> Finish	8.9
15	Start -> W -> R -> NAS1(p) or NAS2(s) -> W -> R -> NAS1(p) or NAS2(s) -> Finish	12.9
16	Start -> W -> R -> Gate -> Finish	3.6
17	Start -> W -> R -> Gate -> W -> R -> Gate -> Finish	5.8
19	Start -> W -> R -> Gate -> W -> R -> Gate -> W -> R -> Gate -> Finish	8

### Mark Descriptions

Mark	Mark Description	Mark	Mark Description
Start	The starting line will be between a staff displaying an orange flag on the RC boat and a temporary orange mark called T1. In the absence of T1, SC1 will be the start line pin.	Finish	Finish line will be announced by VHF radio and will either be the Start line or between the eastern corner of Pier 48 and Green channel marker FL G 2.5s "PA"
NAS1/NAS2	NAS1 Alameda Channel Mark "1" FL G 4s Bell round to PORT or NAS2 Alameda Channel Mark "R2" FI R 4s round to STARBOARD	AS1	Yellow mark, approx. 0.25 nm East of BVBC
YB	Yerba Buena is a Red buoy "2" FI R 2.5s approx. 0.5 nm South of Yerba Buena Light House	34	Red buoy "2" FL R 2.0s, approx. 0.5 nm east of Potrero Point
W	A temporary 8ft Orange Cone approx. 300 yards East of the South Beach Marina wall ***	R	A temporary Orange Tetrahedron reaching mark that may be set up current of W mark to square up the downwind leg. ***
Gate	Two Inflatable 8 ft. orange cones set as a leeward gate set in the vicinity upwind of the starting area. Enter between the two marks in the direction from the previous mark and round either the left mark to port or the right mark to starboard.	SC1	SC1 is a green & red buoy, "SC" FL G(2+1), approx. 1.0 nm ENE of Mission Rock Terminal

\*\*\*

Due to changing currents, equipment failure, or human error, the size, shape, and/or orientation of the W-R marks may vary. W-R is to be rounded, as a pair, in the direction indicated in 7.3. W and R are never to be "circled" individually.



Course Chartlet

