



Northern Century Sailing Instructions

August 12-14, 2022

1. RULES

Unless explicitly changed by these sailing instructions, the Northern Century will be governed by the Racing Rules of Sailing (RRS) as modified below:

Part 2 is amended as follows:

- Between sunset and sunrise the "International Regulations for Preventing Collisions at Sea" shall replace the Racing Rules of Sailing Part Two.
- A boat that impedes or obstructs commercial traffic at any time may be protested and disqualified.

Rule 42 is amended as follows:

A boat may ONLY use its engine for propulsion to:

- rescue a crew that is overboard
- aid a boat or sailor in distress
- move to a safe position if it is in danger of commercial traffic.

The use of its engine shall not be used to gain distance in the direction of the course, nor gain any other competitive advantage. Vessels that use their engine to avoid grounding or to un-ground themselves shall retire from the race. The skipper of a boat who has used its engine for propulsion for an allowable exception must file a report with the Race Committee immediately upon finishing. The report is to give the speed, the compass heading, the duration and the position from which the engine was used for propulsion and the names of any witnesses to the event.

Rule 51 is amended as follows:

- A Yacht issued a current PHRF or ORC Handicap that assumes her use of moving ballast or taking on or discharging water ballast is permitted to use that system.

Rule 52 is amended as follows:

- Boats entered in a Double-Handed race are allowed to use their autopilot.

2. ELIGIBILITY

Competing boats shall:

- Have submitted a completed registration for this event.
- Have a current PHRF Northwest or ORC rating certificate.
- Meet SER Coastal category requirements, with these exceptions:

1 Section 3.1.1 requiring inflatable life jackets, or Type I life saving devices with crotch straps is at the discretion of the skipper of each boat. Skippers accept responsibility for their choice and it is recommended that Section 3.1.1 is followed as written. Section 3.1.2 is in effect at a minimum and it is recommended that life jackets be worn at all times when racing. It is required that double handed competitors wear life jackets while on deck between the hours of sunset and sunrise.

2 Sections 3.6.1-3.6.3 requiring SOLAS branded flares is recommended, and Section 3.6.4 requiring US Coast Guard approved flares at a minimum is a requirement. If a boat is equipped with SOLAS flares rather than USCG approved flares, it will have met the flare requirements.

3 Section 3.8.1 has been amended to include any VHF with a 7 watt minimum, and the mast-head antenna requirement has been removed. A second waterproof VHF is still required per Section 3.8.2

4 Section 3.8.3 has been changed to recommended.

5 Section 3.33.3 A boat shall carry a heavy-weather jib (or heavy-weather sail in a yacht with no forestay) of area not greater than 13.5% height of the fore triangle squared has been changed to recommended.

3. COMPETITOR BRIEFING

There will be a mandatory Competitor Briefing at the Anacortes Yacht Club at 1730 on Friday night, August 12, 2022.

4. CHANGES IN SAILING INSTRUCTIONS AND NOTICES

Any changes to the sailing instructions or notices to competitors will be distributed at Race Headquarters at Anacortes Yacht Club on the day of the race. It is each boat's responsibility to check in to receive any such changes or notices.

When confronted with discrepancies, the information in these Sailing Instructions shall take precedence over the information in the Notice of Race.

5. SIGNALS MADE ASHORE

- No signals will be made ashore

6. RACES / DIVISIONS

There will be five races:

- Fully Crewed ORC 100
- Double Handed PHRF 100 mile race (two divisions)
- Fully Crewed PHRF 100 mile race (two divisions)
- Double Handed PHRF 50 mile race
- Fully Crewed PHRF 50 mile race

There may be special divisions for Cruising, Multihulls, Classics, or One Design fleets.

The double handed race will consist of boats which are crewed by the same two (2) persons for the entire duration of the race. The fully crewed race consists of boats that are crewed by the same three (3) or more persons for the entire duration of the race. No single-handed boats will be allowed due to Coast Guard regulations. Minor children less than 12 years of age are not considered crew as long as they do not provide any assistance in operating the boat.

Printed division lists will be distributed at the event.

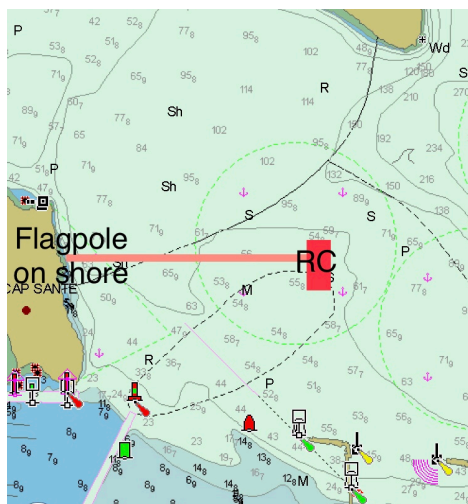
One-Design divisions may be created if there are 5 or more participating boats.

7. PRE-RACE REVIEW

All boats are invited to participate in a pre-race review and send-off at 1800 on Friday between A & B Docks of Cap Sante Marina.

8. RACE COURSE

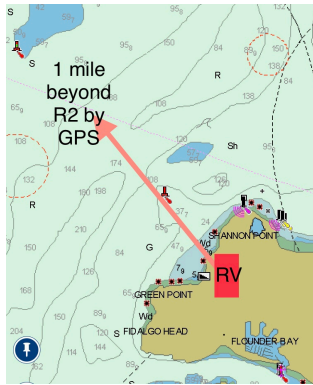
The **100 Mile Race Course** consists of a start line, two intermediate marks with specified rounding directions, and a finish line. It is left to the competitors to determine the best route between the start/finish lines and the specified marks of the course.



Start: Shall be between the RC boat **Volunteer** and a flagpole on the Cap Sante shore at the coordinates of 48.31.107'N 122.35.969'W.

Mark #1: Keep the Red #4 Buoy in the vicinity of Point Roberts to port. Please document your rounding time when R4 is bearing 180. This may be used as a short course finish.

Mark #2: Keep the Green #1 Hein Bank Buoy to port. Please document your rounding time when G1 is bearing 0. This may be used as a short course finish.

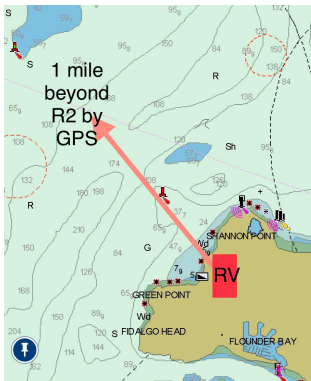


Finish Line: A line that intersects the Red #2 Channel Marker and the Race Committee RV/ flag on shore at Washington Park, extending up to **ONE MILE** beyond the R2 mark off shore. If in doubt, please record with GPS evidence. A boat shall be considered finished when they cross the line that intersects the two points within one mile of the mark. A bright strobe will be displayed on the RC on shore at night.

Finish RC committee: phone number will be announced at the competitor briefing on Friday night.

ROUNDING RECORD: All boats must record their GPS rounding times at each mark of the course and finish line, as well as the boat in front and behind (if known). Recording forms may be submitted at Anacortes Yacht Club Race Headquarters after finishing, or sent electronically. The Rounding Record will be used for Short Course finishes, to determine prizes in the Predicted Log contest, and will be used to help settle finish time disputes if necessary.

The **50 Mile Race Course** consists of a start line, one intermediate mark with specified rounding direction, and a finish line. It is left to the competitors to determine the best route between the start/finish lines and the specified mark of the course.



Start: Shall be between the RC boat **Volunteer** and a flagpole on the Cap Sante shore at the coordinates of 48.31.107'N 122.35.969'W.

Mark: Keep the Alden Bank Lighted Gong Buoy A to port. This is the North end of Alden Bank.

Finish Line: A line that intersects the Red #2 Channel Marker and the Race Committee RV/ flag on shore at Washington Park, extending up to **ONE MILE** beyond the R2 mark off shore. A boat shall be considered finished when they cross the line that intersects the two points within one

mile of the mark. Boats are NOT required to cross between the mark and the shore, but ARE required to finish within one mile of the R2 mark. A bright strobe light will be displayed on the RC RV at night

Finish RC committee: phone number will be announced at the competitor briefing on Friday night.

9. RACE COMMUNICATIONS

Race communications will be conducted using **VHF channel 72**. In the event of emergency competitors should call the following: US/Canadian Coast Guard - **VHF channel 16**.

Boats are REQUIRED to continuously monitor VHF channel 16 at all times after the start of each race and are subject to disqualification by the Race Committee without redress if they obviously fail to do so. It is also strongly recommend that vessels monitor the appropriate Vessel Traffic Frequencies (VHF channel 5 in Rosario Strait and East Entrance of the Strait of Juan de Fuca; VHF channel 11 in the Strait of Georgia, Boundary Pass and Haro Strait).

10. THE START

-The starting line will be as specified in Section 8 (Race Course) unless modified by the on-the water Race Committee before the start.

-All boats are required to check in with the Race Committee using **VHF channel 72** at least 10 minutes prior to the first start of the race.

-Races will be started using RRS Rule 26 with the warning signal being given five (5) minutes before the starting signal for each particular race. Prior to a boat's preparatory signal she shall keep clear of the start/finish area and of all boats whose preparatory signal has been made.

-Unless modified at the skipper's meeting or by the on-the water Race Committee, the division start times will based on GPS time as follows:

Friday, August 12, 2022

1930 - Double Handed 100 Start

1940 - Fully Crewed 100 Start (ORC and PHRF)

1950 - 50 Mile Race Start

If one or more boats are over early, the Race Committee will make one horn signal and hail the boat or boats using VHF channel 72. If a general recall is required, the Race Committee will make two horn signals and announce the general recall using VHF Channel 72

11. RACE TRACKING

Boats shall be required to transmit their position on AIS. For boats that do not have AIS, please review the Race Tracking document, where you can find information about an inexpensive App that transmits your boat location to AIS.

12. THE FINISH

-All vessels are requested to call in to the finish line team approximately thirty (30) minutes in advance of finishing.

-The Race Committee will take finish times. After each boat finishes the finish line team will contact the vessel using the **VHF channel 72**.

-In addition to finish times recorded by the race committee, all vessels are required to record their own finish times (using GPS time) taking note of any vessel immediately behind and ahead.

13. SCORING: NOTE UPDATED SHORT COURSE

-All boats finishing the full course will be scored using time on distance based on a nominal course length of 100/50 nautical miles and the vessel's current PHRF or ORC Northwest rating.

-If no boats in a DIVISION complete the entire course, the race will be scored based on rounding Mark 2 of the N100 course. The course to Hein Bank is 75 miles.

-If no boats in a DIVISION round Mark 2 of the N100 course, the race will be scored based on rounding Mark 1 of the N100 course. The course to Point Roberts is 35 miles

Overall Corrected Performance of the Northern Century 100 will be based on completion of the full course, followed by Mark 2 (Hein Bank) finishers, followed by Mark 1 (Point Roberts) finishers.

14. AWARDS

Awards will be given in each division. An award will be given, plus a perpetual trophy for the fastest elapsed finish time. Additional awards shall be given based on performance, special recognition, or anything at the discretion of the Race Organizer.

15. PROTESTS

-Boats who wish to protest shall inform the offending boat at the time of the offense both by flying a protest flag and verbally hailing the offending boat PLUS notifying the Race Committee during the Finish check in. It is highly recommended that boats exonerate themselves rather than creating a formal protest situation.

16. SHORTENED COURSE

There will be a shortened course option for N100 boats when they round Mark 1 and Mark 2 of the course. Boats are required to document proof of these rounding, and submit them digitally to Scott Truesdell 1 (714) 914-7157.

17. TIME LIMIT

There is a time limit of 1200 on Sunday, August 14 for all boats on all courses.

18. WITHDRAWALS

Boats who wish to withdraw must notify the Race Committee of their intentions using **VHF channel 72** or calling/ text message 1(714) 914-7157.

19. SAFETY

-All boats are responsible to ensure that an accurate and complete crew list has been submitted to the Race Committee.

-It is required that while sailing at night ALL double-handed competitors wear personal flotation devices that are equipped with strobes and whistles. It is strongly recommended that all competitors wear personal flotation devices at all times, and that tethers be used during times of inclement weather.

20. INSURANCE

-All boats are required to carry a minimum of \$300,000 per occurrence liability insurance in effect while racing covering property damage, fuel spills, personal injury and death.

21. RESULTS

Results will be posted on the event website - www.northerncentury.org as boats finish during the event, to the best of our ability.

22. QUESTIONS

For additional information or questions please contact:

Event Chair: Stephanie Campbell (360)770-9460

Before Event: Karen Rose (360)630-1673

Finish Line Race Committee: (to be announced at briefing)_____

Scorer: Scott Truesdell (714) 914- 7157

Cap Sante Marina Office: (360) 293-0694

Good luck, racers!