



**2022 HYC Mid-Winter Regatta  
February 18-20, 2022**

**Organizing Authority:  
The Houston Yacht Club  
Shoreacres, Texas**

**SAILING INSTRUCTIONS**

**1. RULES**

1.1 The regatta will be governed by the rules as defined in *The Racing Rules of Sailing*.

**2. NOTICES TO COMPETITORS**

2.1 Notices to Competitors will be posted on the official "HYC Race Information" notice board located in the breezeway adjacent to the offices of The Houston Yacht Club. As a courtesy, Notices may be posted on the Event Website located at:  
<https://www.regattanetwork.com/event/23821> .

**3. CHANGES TO SAILING INSTRUCTIONS**

3.1 Any change to these Sailing Instructions will be posted before 0800 on the day it will take effect, except that any change to the schedule of races will be posted by 2000 on the day before it will take effect.

**4. SIGNALS MADE ASHORE**

4.1 Signals made ashore shall be displayed from the signal staff on the lawn of The Houston Yacht Club.

4.2 When flag AP is displayed ashore, "1 minute" is replaced with "not less than 60 minutes" in the race signal AP. This changes RRS Race Signals.

4.3 Signal flags may be flown either alone or over one or more numeral pennants. Individual lines will be designated by following pennants:

4.3.1 When flag AP over "1" pennant is displayed, the signal applies to the Windward/Leeward Line.

4.3.2 When flag AP over "2" pennant is displayed, the signal applies to the Pursuit Line.

4.3.3 If no Numeral Pennant is displayed, the signal pertains to all lines. This changes RRS Race Signals.

**5. SCHEDULE OF RACES**

5.1 Races will be sailed according to the schedule in the Notice of Race. All times are CST GPS.

5.2 Flag A displayed, with no sound, while boats are finishing means "No more racing today".

5.3 First Warning Signal

Saturday	Pursuit Course	11:00 AM
	Windward / Leeward	12:00 Noon
Sunday	Pursuit Course	11:00 AM
	Windward / Leeward	12:00 Noon

**6. CLASS FLAGS**

PHRF Spinnaker	Pursuit	Orange Flag, see SI 11.2.3
PHRF Spinnaker	W / L	Pink Flag
J-105 Class	W / L	J-105 Class Flag
J-22 Class	W / L	Brown Flag
J-24 Class	W / L	Teal (Green) Flag
Ensign Class	W / L	Ensign Class Flag

**7. RACING AREA**

- 7.1 All classes will sail around designated marks in the area bounded by Morgan’s Point on the North, the Bayport Ship Channel on the South, the Houston Ship Channel on the East, and the La Porte/Shoreacres shore line on the West. The racing area is shown in Attachment A.
- 7.2 Boats shall not enter any Ship Channel while racing. Ship Channels are designated as obstructions.

**8. CHECK IN**

- 8.1 Prior to the warning for the first race of each day, each boat shall check-in with, and be recognized by, the Race Committee (R/C) Signal Boat displaying the code Flag "L," by passing close astern, on starboard tack and hailing her sail number.
- 8.2 Pursuit Course racers must additionally hail their PHRF rating and spinnaker, or non-spinnaker class to complete their entry. Pursuit Course Boats that check in less than 5 minutes before the Warning signal may receive a 20% scoring penalty without a hearing. Boats not checked-in will be scored DNC without a hearing. This modifies RRS Appendix A5.

**9. THE COURSES**

- 9.1 The Windward/Leeward Line - North of the Bayport Ship Channel  
No later than the warning signal, the Race Committee Signal boat will display a numeral pennant indicating the number of legs to be sailed. All marks other than the 2S gate mark shall be rounded leaving the mark to port. If a gate mark is missing, the remaining gate mark shall be rounded leaving the mark to port. See Attachment C.
- 9.2 The Pursuit Line - North of Bayport Ship Channel
  - 9.2.1 Attachment B shows the courses and the order in which the marks are rounded.
  - 9.2.2 No later than the warning signal, the Race Committee Signal Boat will display a numeral pennant indicating the course to be sailed (See Attachment B).

**10. MARKS**

- 10.1 The Windward/Leeward Line
  - 10.1.1 For J-105 & PHRF classes, the windward mark is a yellow tetrahedron and an offset.
  - 10.1.2 For all other W/L classes, the windward mark is an orange tetrahedron and an offset.
  - 10.1.3 New marks as provided in instruction 13 will be orange or yellow tetrahedrons.
  - 10.1.4 For W4 courses, leeward marks are gates, designated 2P & 2S (See attachment C).

10.2 The Pursuit Line

The Pursuit Line mark layout is shown in Attachment A.

- o Mark #1, is the "The Judges Stand" located approximately: 29° 37.367'N, 94° 59.726'W
- o Mark #2, is the "High Range" located at approximately: 29° 37.790'N, 94° 58.214'W
- o Mark #3, a large YELLOW tetrahedron located approximately: 29° 39.833'N, 94° 58.919'W
- o Mark #4, a large YELLOW tetrahedron located at approximately: 29° 38.839'N, 95° 00.114'W

11. **THE START**

11.1 The Windward/Leeward Line

11.1.1 Races will be started by using RRS 26.

11.1.2 The starting line will be between a staff displaying an orange flag from the signal boat on the starboard end and a mark or floating shape at the port end.

11.2 The Pursuit Line

11.2.1 The **Pursuit Line** will be between a staff displaying an orange flag on a race committee vessel and the course side of the starting mark.

11.2.2 The **Pursuit Line start** is staggered, based on the boat PHRF handicap in Attachment B.

11.2.3 The Warning signal is the display of the orange line flag.

11.3 Any boat not within her 4 minute starting preparatory sequence shall keep clear of any boat that is.

11.4 A boat shall start no later than 4 minutes after her assigned starting time. Any boat that starts 4 minutes after her starting time will be scored DNS without a hearing. This changes RRS A5.2.

11.5 The Race Committee may elect to trail a line (not to exceed 30') attached to a floating object, behind the Race Committee boat or elect to attach a buoy to the boat's anchor marking the anchor and the anchor rode (of up to approximately 50'). The floating object and its line shall be considered to be part of the Race Committee boat and hitting the floating object or running over the line shall be treated as hitting the Race Committee boat.

12. **RECALLS**

12.1 Recalls will be signaled in accordance with RRS 29.

12.2 As a courtesy, the Race Committee will attempt to hail boats "On Course Side" (OCS) as soon as possible after the start. The Race Committee may use VHF radios or loud hailer.

12.3 The failure of electronic equipment, failure to hear a hail, order of hail, or delay in hailing will not be grounds for redress. This modifies RRS 62.1(a).

12.4 The Pursuit Line

12.4.1 Code flag X will be displayed for a short period of time, and such length of time shall be at the discretion of the Race Committee, for the Pursuit Line. This changes RRS 29. The length of time that Code Flag X is displayed will not be grounds for redress. This changes RRS 62.1(a).

12.4.2 Pursuit Line start times are CST GPS time, which governs. All boats will be responsible for determining their exact start time, and no start times will be announced or signaled from the Race Committee boat. The Race Committee will monitor start times of each boat. OCS boats have the option of returning to the start line and restarting, or shall take the penalty as shown in the table below. The penalty will be assessed at scoring. This changes RRS 29.1 and Appendix A.

0 to 10 sec early	penalty of 30 seconds
10 to 30 sec early	penalty of 1 minute
30 to 1 min early	penalty of 3 minutes
1 min to 2 min	penalty of 10 minutes
More than 2 min	Did Not Start

### 13. CHANGE OF THE POSITION OF THE NEXT MARK

13.1 omitted

#### 13.2 The Windward/Leeward Line

To change the next leg of the course, the Race Committee will lay a new mark (described in Section 10.1) and remove the original mark as soon as practicable.

13.2.1 For J-105 and PHRF classes the change mark is an orange tetrahedron.

13.2.2 For other W/L classes, the change mark is a yellow tetrahedron.

### 14. SHORTENED COURSE

#### 14.1 The Windward/Leeward Line

Rule 32 is in effect. If the course is shortened, the Race Committee Signal Boat will be in the original starting position and will not relocate to the opposite side of the finish mark.

#### 14.2 The Pursuit Line

The Race Committee may shorten the course at one of the marks described in Section 10.2 of these Sailing Instructions.

### 15. THE FINISH

#### 15.1 The Windward/Leeward Line

The Finish Line will be between a staff displaying a blue flag on the Race Committee boat on the starboard end and Mark-F, (Floating Green Tet) on the port end.

#### 15.2 The Pursuit Line

The Finish Line will be between an orange tetrahedron and the course side of the judges stand (Mark #1). The Race Committee will record the order of finishes.

### 16. TIME LIMITS

16.1 Unless posted on the HYC Race Information Board, the Windward/Leeward Line time limit is **120 minutes** and the Pursuit Line time limit is **210 minutes**.

16.2 Boats failing to finish within 30 minutes (the finishing window) after the first boat in its class sails the course and finishes will be scored Time Limit Expired (TLE) equal to the number of finishing boats plus 2. This changes RRS 35, A4, and A5.

### 17. PENALTIES

#### 17.1 **PENALTY AT THE TIME OF AN INCIDENT** (*RRS Appendix V1*).

The first two sentences of rule 44.1 are changed to: 'A boat may take a One-Turn Penalty when she may have broken one or more rules of Part 2 or rule 31 in an incident while racing. However, when she may have broken one or more rules of Part 2 while in the zone around a mark other than a starting mark, her penalty shall be a Two-Turns Penalty.' This changes RRS 44.1

#### **POST-RACE PENALTIES** (*RRS Appendix V2*)

- (a) Provided that rule 44.1(b) does not apply, a boat that may have broken one or more rules of Part 2 or rule 31 in an incident may take a Post-Race Penalty at any time after the race until the beginning of a protest hearing involving the incident.
- (b) A Post-Race Penalty is a 30% Scoring Penalty calculated as: 30% of the score for Did Not *Finish*, rounded to the nearest whole number (0.5 rounded upward). The scores of other boats shall not be changed; therefore, two boats may receive the same score. However, the penalty shall not cause the boat's score to be worse than the score for Did Not *Finish*. However, rule 44.1(a) applies.
- (c) A boat takes a Post-Race Penalty by delivering to the race office a written statement that she accepts the penalty and that identifies the race number and where and when the incident occurred.

## **18. PROTESTS AND REQUESTS FOR REDRESS**

- 18.1. Intent to protest shall be signaled in accordance with RRS 61.1. The protesting boat shall also notify the Race Committee at the first reasonable opportunity and be acknowledged before leaving the finish area. This changes RRS 61.1.
- 18.2. Protests shall be written on forms available at the office of the Houston Yacht Club and delivered there within sixty (60) minutes following the arrival in the harbor of the Race Committee boat for the racing line involved. This time will be posted on the "HYC Race Information" official notice board. This changes RRS Appendix S13.2.
- 18.3. Scoring errors should be reported as soon as they are noticed, If the race committee refuses to correct an alleged scoring error, the time limit to request redress based on that decision is 60 min after notice is received of refusal.
- 18.4. The times and locations of the protest hearings, along with the names of the boats involved will be posted on the "HYC Race Information" official notice board at the entrance to the breezeway adjacent to the offices of The Houston Yacht Club no later than thirty (30) minutes after the protest time period.
- 18.5. For the purpose of meeting obligations under US Sailing prescriptions concerning redress, notification of a redress hearing shall be by posting on the official notice board for thirty (30) minutes. The requirement for written requests for attendance of the hearing will be satisfied by a signup sheet at the official protest table. No more than one person per boat may attend. **No request for reopening a hearing will be accepted 30 minutes after a protest committee decision has been posted on the "HYC Race Information" official notice board.** This changes RRS 62.2.
- 18.6. As a courtesy, the Protest Committee will attempt to notify the parties to a protest hearing or a redress hearing by telephone at the telephone number provided online on Regatta Network upon registration.

## **19. SCORING**

- 19.1. The Low-Point Scoring system of Appendix A shall apply.
- 19.2. One race shall be completed to constitute a series.
- 19.3. No scores will be excluded. This changes RRS A2.

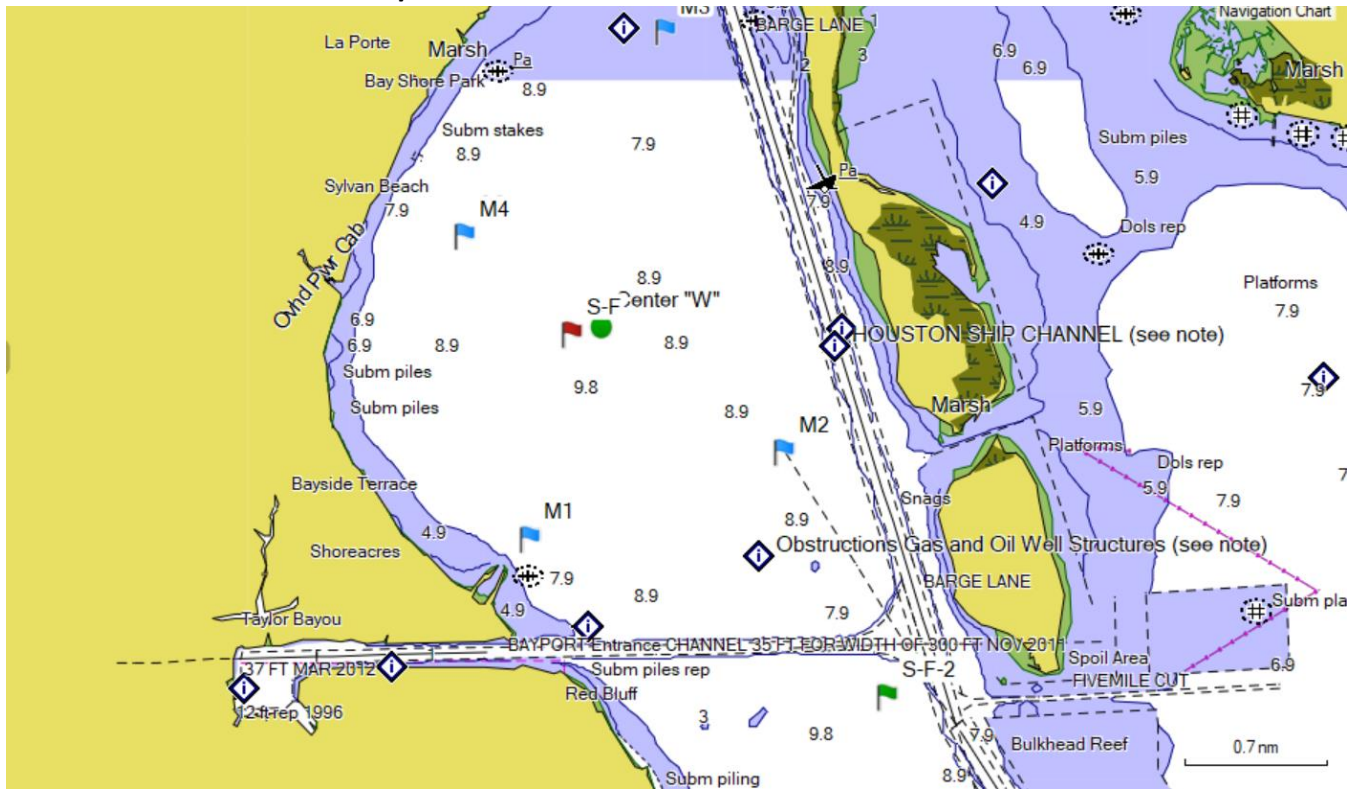
## **20. SAFETY**

- 20.1. Any boat that has checked in, and then withdraws before finishing the race, shall notify the Race Committee on the water, or, if that is not possible, The Houston Yacht Club office by telephone: **281-471-1255**, or **VHF Channel 68 (all Lines)**. Failure to comply with this requirement may result in disqualification from this regatta.
- 20.2. **DISCLAIMER OF LIABILITY:** Competitors participate in this regatta entirely at their own risk. See RRS 3, Decision to Race.

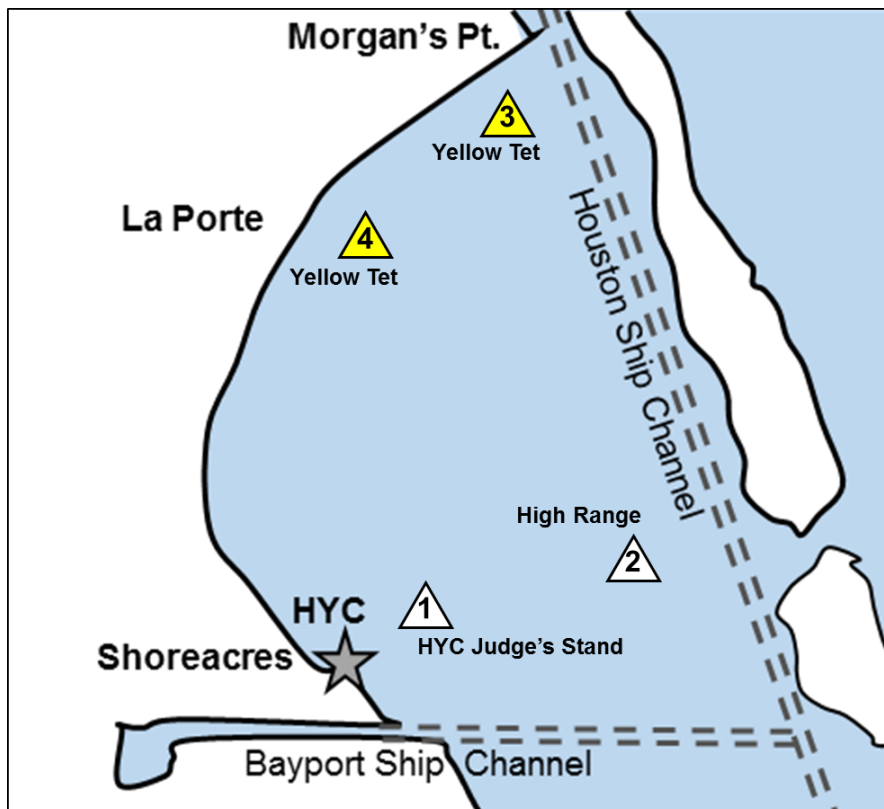
## **21. RADIO COMMUNICATIONS**

- 21.1. Except in an emergency that threatens the safety or life and/or property, a boat that is racing shall not make voice or data transmissions and shall not receive voice or data communication that is not available to all boats.
- 21.2. The Race Committee will attempt to monitor **VHF Channel 68 for all lines**; and may use VHF radio to hail premature starters and the abandonment of races.
- 21.3. The Race Committee may attempt to report visual signals displayed, and other pertinent information over VHF for the races. This information is provided as a courtesy to the competitors and does not in any way alter their responsibility to observe the RC's visual signals which govern the conduct of the race. Errors or omission involving such courtesy broadcasts shall not be grounds for redress.

**ATTACHMENT A: RACING AREAS  
WINDWARD/LEEWARD LINE AND PURSUIT LINES - NORTH COURSE**



**PUSUIT COURSE MARK LAYOUT**



## ATTACHMENT B

### PURSUIT LINE START TIMES AND COURSES

#### COURSE # 1

##### START TIME OFFSETS FOR COURSE # 1, 8.8 miles

Start	Sail #	Skipper	Boat Name	PHRF
0:05:00	25527	Yolanda Cortes-Mares	Picante	81
0:09:24	12039	Ken Humphries	Outrageous 2	51

##### COURSE MARKS FOR COURSE # 1, 8.8 miles

Mark 1 to Mark 4 Leave on Port  
Mark 4 to Mark 1 Leave on Port  
Mark 1 to Mark 2 Leave on Port  
Mark 2 to Mark 1 Leave on Starboard  
Mark 1 to Mark 4 Leave on Port  
Mark 4 to Mark 1 to finish for a total of 8.8 miles

#### COURSE # 2

##### START TIME OFFSETS FOR COURSE # 2, 8.6 miles

Start	Sail #	Skipper	Boat Name	PHRF
0:05:00	25527	Yolanda Cortes-Mares	Picante	81
0:09:18	12039	Ken Humphries	Outrageous 2	51

##### COURSE MARKS FOR COURSE # 2, 8.6 miles

Mark 1 to Mark 2 Leave on Port  
Mark 2 to Mark 1 Leave on Starboard  
Mark 1 to Mark 4 Leave on Starboard  
Mark 4 to Mark 3 Leave on Port  
Mark 3 to Mark 4 Leave on Port  
Mark 4 to Mark 1 to finish for a total of 8.6 miles

#### COURSE # 3

##### START TIME OFFSETS FOR COURSE # 3, 6.4 miles

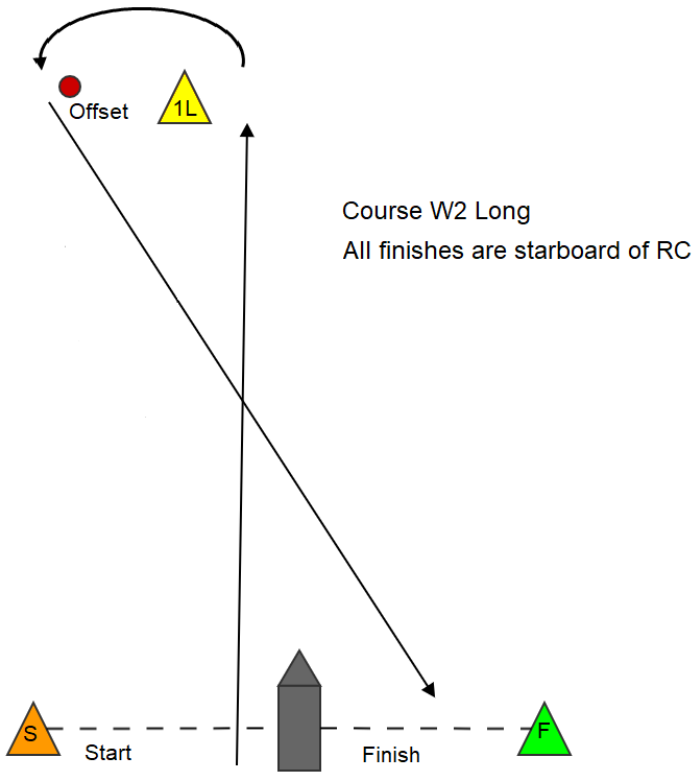
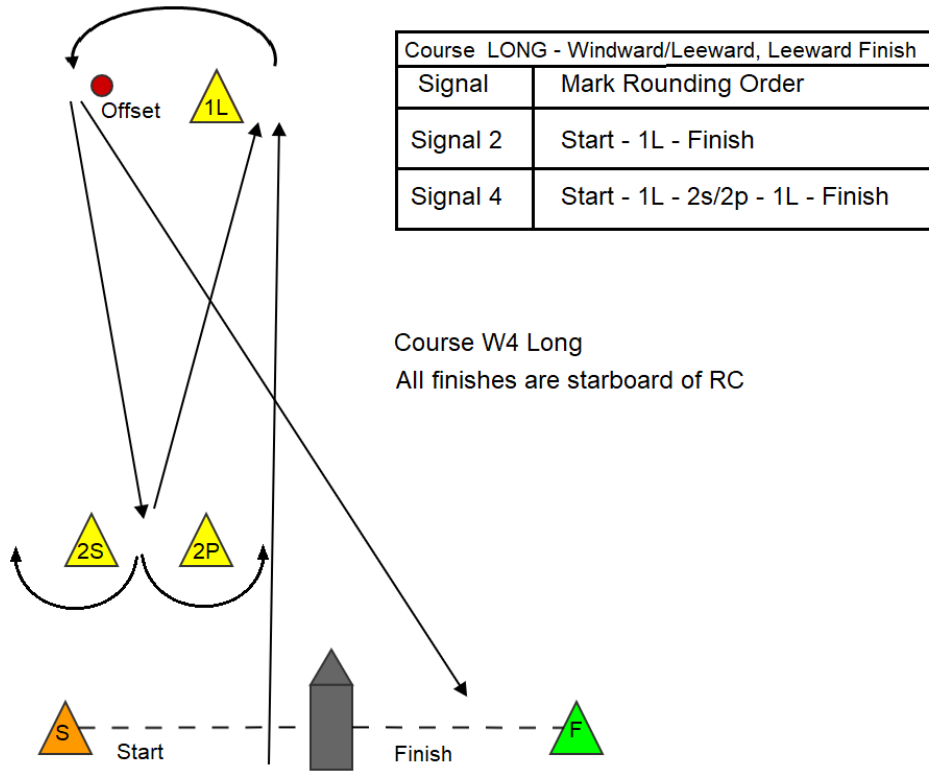
Start	Sail #	Skipper	Boat Name	PHRF
0:05:00	25527	Yolanda Cortes-Mares	Picante	81
0:08:12	12039	Ken Humphries	Outrageous 2	51

##### COURSE MARKS FOR COURSE # 3, 6.4 miles

Mark 1 to Mark 2 Leave on Port  
Mark 2 to Mark 3 Leave on Port  
Mark 3 to Mark 4 Leave on Port  
Mark 4 to Mark 1 to finish for a total of 6.4 miles

# ATTACHMENT C - WINDWARD/LEEWARD LINE

## J-105 Class & PHRF W/L Class





# ATTACHMENT C - WINDWARD/LEEWARD LINE

## Ensign, J-22, & J-24 Classes

