



RAINBOW REGATTA

APRIL 4-5, 2022

**ORGANIZING AUTHORITY: DINGHY DAMES SAILING CLUB
HOSTED BY DINGHY DAMES AND MAINSHEET MAMAS AT
DAVIS ISLAND YACHT CLUB
TAMPA FLORIDA**

SAILING INSTRUCTIONS

1. RULES

- 1.1. The regatta will be governed by the *rules* as defined in *The Racing Rules of Sailing* including Appendix V (Alternative Penalties).
- 1.2. If there is a conflict between the NOR and SIs, the SIs will take precedence. The US prescriptions to RRS 60.1 and 60.2 will not apply.

2. NOTICES TO COMPETITORS

Notices to competitors will be posted on the official notice board located on the west exterior wall on the lower level of the clubhouse.

3. CHANGES TO SAILING INSTRUCTIONS

Any change to the sailing instructions will be posted before 0830 on the day it will take effect, except that any change to the schedule of races will be posted by 1800 on the day before it will take effect.

4. SIGNALS MADE ASHORE

- 4.1. Signals made ashore will be displayed from the flagpole at Davis Island Yacht Club.
- 4.2. When flag AP is displayed ashore, '1 minute' is replaced by 'not less than 45 minutes' in the race signal. This changes Race Signal AP.

5. SCHEDULE OF RACES

Monday, April 4	1400	Practice race
Tuesday, April 5	1030	First Scheduled Warning
	1500	No warning after this time

6. RACING AREAS, CLASS FLAGS and MARKS

See Attachment 1. Note: The race committee may set a 'guide buoy,' a small orange ball, near the middle of the starting line. This 'guide buoy' is not a mark of the course.

7. COURSES

- 7.1. The diagrams in Attachment II show the possible courses.
- 7.2. The course will be posted on the stern of the signal boat no later than the warning signal.

8. THE START

- 8.1. Races will be started in accordance with RRS 26 with the warning signal made five (5) minutes before the starting signal.
- 8.2. The starting line will be between a staff displaying an orange flag on the race committee signal vessel at the starboard end and either (a) the course side of a starting mark or (b) a staff displaying an orange flag on a vessel at the port end.
- 8.3. To alert sailors the sequence will begin soon, the orange flag will be unfurled on the signal vessel and, if present, the pin boat indicating the sequence will begin in not less than one minute. At the end of the starting time, the signal vessel and, if present, the pin boat will strike the orange flag.
- 8.4. On the Pram/IOD circle only, when an individual recall is signaled, the race committee will attempt to hail boats that are OCS. The timing and order, or omission, of such hails or the failure of a boat to hear a hail will not be considered an improper action or omission of the race committee under RRS 62.1. Individual recalls will not be hailed on the Sunfish race circle.
- 8.5. A boat starting later than five (5) minutes after her starting signal will be scored a DNS without a hearing. This changes Rule A4.

9. THE FINISH

The finishing line will be between a staff displaying a blue flag on a race committee boat and the course side of the finishing mark.

10. CHANGE OF THE NEXT LEG OF THE COURSE

- 10.1. To change the next leg of the course, the race committee will lay a new mark (or move the finishing line) and remove the original mark as soon as practical. Race committee may adjust the course bearing of the next leg of the course by up to 10 degrees without signal. This changes Rule 33..
- 10.2. Individual gate marks may be moved (without signal) to maintain the configuration of the course.

11. TIME LIMITS

- 11.1. The time limit for the first boat in each race is 50 minutes.
- 11.2. Boats still racing more than 20 minutes after the first boat sails the course and finishes will be scored TLE without a hearing and will receive two more points than the number of finishers. This changes RRS 35, 63.1, A4, and A5.

12. SCORING

- 12.1. A boat's score shall be total of all her race scores with no races excluded.
- 12.2. Three races are scheduled.
- 12.3. One completed race is required for this regatta.

13. PROTESTS AND REQUESTS FOR REDRESS

- 13.1. Protest forms are available in the Regatta Room at DIYC. Protests shall be delivered there within 30 minutes after the race committee finish boat docks. The docking time will be posted on the Official Notice Board.
- 13.2. Hearing notices will be posted no later than 15 minutes after the protest time limit to inform competitors of hearings in which they are parties or named as witnesses. Protests will be heard in the approximate order of receipt.

14. SAFETY

- 14.1. Prior to the warning signal for the first race, each boat shall sail by the race committee signal boat and hail its sail number. Competitors who fail to check in will be given a standard penalty of 2 points added to the first race of the day that she sails, without a hearing. This changes RRS 63.1.
- 14.2. A boat retiring from a race or leaving the racing area early shall promptly notify the race committee either by hail or by telephone to the regatta chair, Beth Owens, at (719) 330-9877.
- 14.3. Competitors shall wear a properly secured USCG approved personal flotation device with an attached whistle at all times while afloat, except briefly while changing clothes. Inflatable personal flotation devices are not allowed.

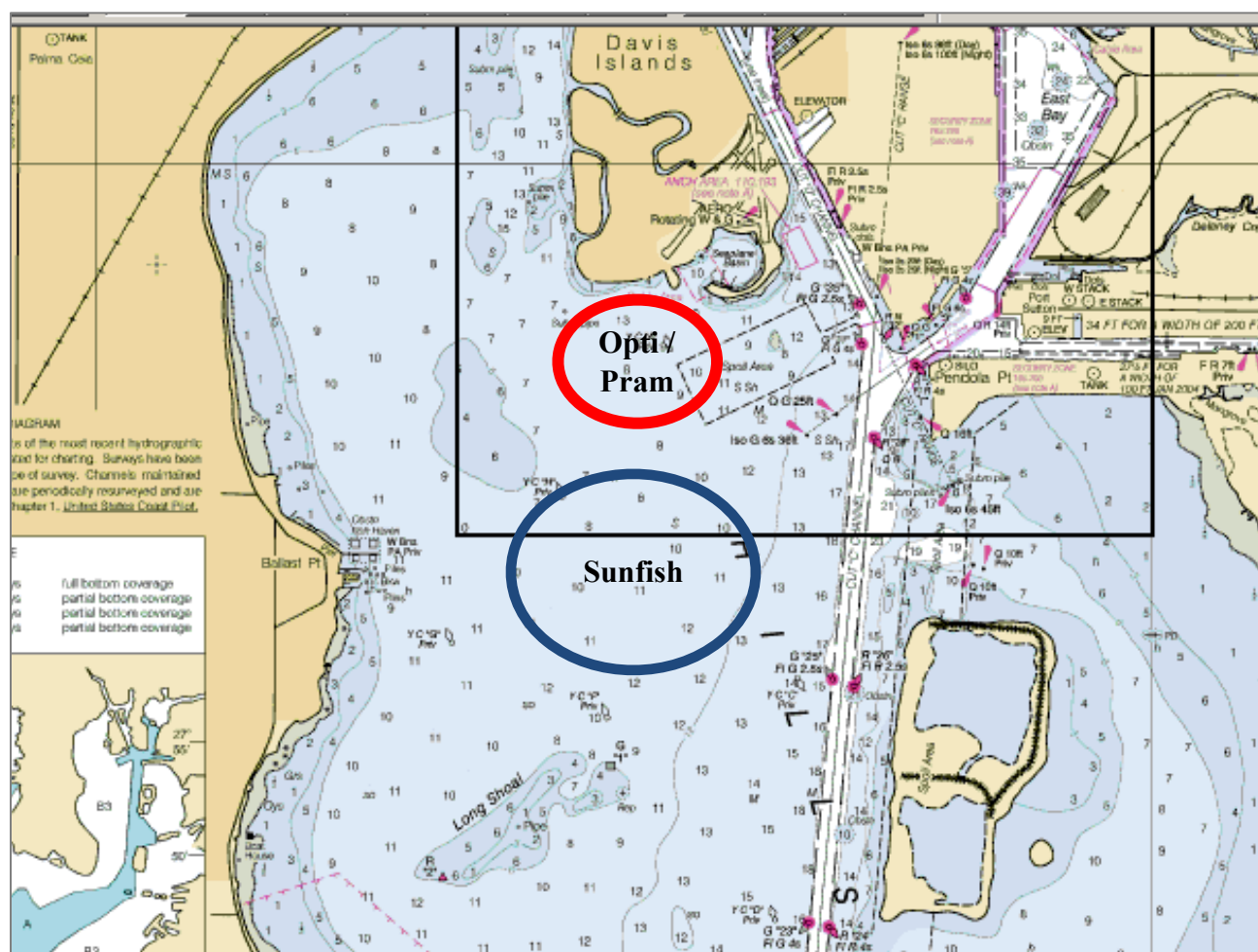
15. SUPPORT BOATS




All spectator and coach boats shall stay at least 50 yards from racing boats and all marks. Failure to comply may result in a discretionary penalty for all sailing clubs associated with the spectator/coach boats, unless asked to assist on the course by the race committee. All outboard-equipped support vessels shall be equipped with a functioning engine safety cut-out switch (kill switch) which shall remain attached to the support person (operator) at all times when the engine is on. Support vessels shall check-in with the RC Signal vessel before the first race of each day to demonstrate compliance. Failure to comply may be considered misconduct.

16. DISCLAIMER OF LIABILITY

Sailing is an activity that has an inherent risk of damage and injury. Competitors in this event are participating entirely at their own risk. See rule 3, Decision to Race. The race organizers (organizing authority, race committee, jury, host club, sponsors or any other organization or official) will not be responsible for damage to any boat or other property or the injury to any competitor, including death, sustained because of participation in this event. By participating in this event each competitor agrees to release race organizers from all liability associated with such competitor's participation in this event fully permitted by law.

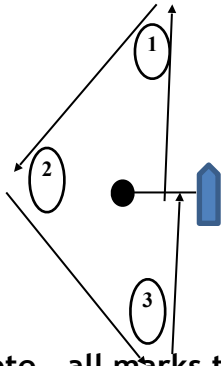
Attachment I – Sailing Areas, Mark Descriptions, Class Flags



Course	VHF Channel	Mark descriptions	Class Flags	Class Flags
Opti / Pram	69	Weather, Jibe, Leeward – Yellow tetrahedrons Change - Orange Tetrahedron Offset – Orange Ball Start - Green Tetrahedrons Finish – Orange Ball	Opti - Opti on white background Pram – Opti on green background	 
Sunfish	72	Weather, Jibe, Leeward – Orange tetrahedrons Change - Yellow Tetrahedron Offset – Orange Ball Mid-Line Guide Buoy - Orange ball Finish – Orange Ball	Sunfish on white background	

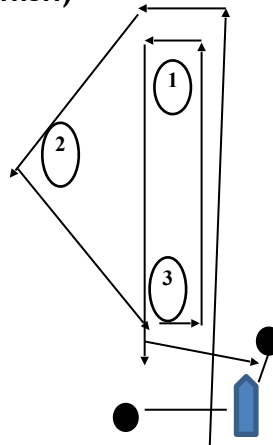
Attachment II - Possible Courses

Course T (start, 1, 2, 3, finish)



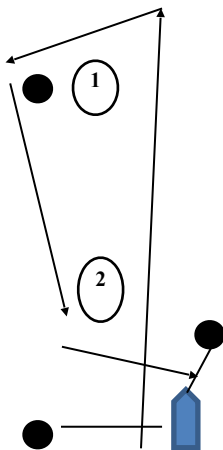
Note - all marks to port

Course O - (start, 1, 2, 3, 1, 3, finish)



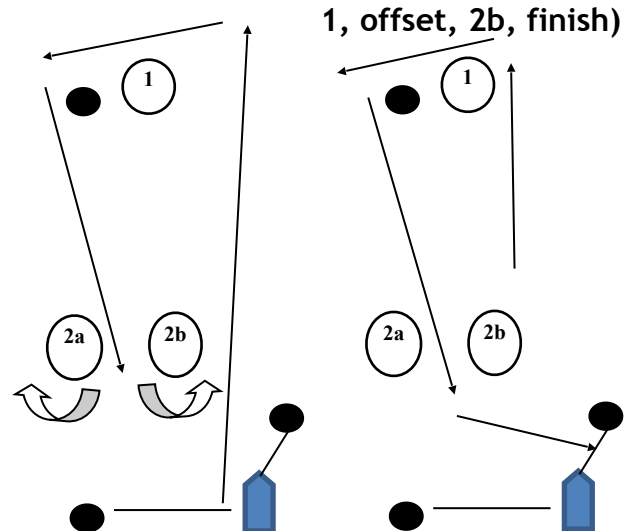
Note - all marks to port

Course W1 - (start, 1, offset, 2, finish)



Note - all marks to port

Course W2 - (start, 1, offset, between 2a and 2b, 1, offset, 2b, finish)



NOTE - If only one leeward mark is present it shall be rounded to port. All other marks to port.