

Ullman Sails Long Beach Race Week



June 24 – 26, 2022
Alamitos Bay Yacht Club & Long Beach Yacht Club
Long Beach, California USA

<http://www.lbrw.org>



ULLMAN SAILS LONG BEACH RACE WEEK INCLUDES THE FOLLOWING CHAMPIONSHIPS

CATALINA 37 NATIONAL CHAMPIONSHIP

VIPER 640 PACIFIC COAST CHAMPIONSHIP

BENETEAU 36.7 HIGH POINT SERIES

NOTICE OF RACE

The notation "[DP]" in a rule in the NoR means that the penalty for a breach of that rule may, at the discretion of the protest committee, be less than disqualification.

1. RULES

- 1.1. This event is governed by the rules as defined in *The Racing Rules of Sailing*.
- 1.2. For PHRF classes, the U.S. Safety Equipment Requirements for Nearshore Races available at <https://www.ussailing.org/competition/offshore/safety-information/ser-world-sailing-special-regulations/> applies.
- 1.3. The Catalina 37 Fleet will be subject to on-the-water umpiring according to Racing. Rule Addendum Q, which will be part of the sailing instructions. Other fleets maybe subject to on-the-water umpiring. When Addendum Q applies Appendix V Rule V1 does not.
- 1.4. [RRS Appendix TS](#), version 2, Section A applies to the following TSS Los Angeles Long Beach Precautionary Area and Los Angeles Long Beach Western Approach. Appendix TS is available on the available on the [Official Notice Board](#).
- 1.5. [DP] RRS 51 and RRS 52 are changed to allow a boat issued a current handicap that assumes her use of moving ballast or taking on or discharging water ballast is permitted to use that system.
- 1.6. [DP] RRS 52 is changed to allow the use of winches operated by using stored power.
- 1.7. [DP] For the purposes of RRS 47, Trash Disposal there will be no penalty for losing biodegradable sail stops overboard used for reasons of safety or proper seamanship.
- 1.8. Appendix T, Arbitration, will apply.
- 1.9. Appendix V, Rule V1, Penalty At The Time Of An Incident, will apply.

2. SAILING INSTRUCTIONS

- 2.1. The sailing instructions (SIs) will be available electronically on the regatta website. Printed copies will be posted on the official notice board.

3. RADIO COMMUNICATION

- 3.1. The online official notice board is located at <http://www.lbrw.org>
- 3.2. [DP] While racing, except in an emergency, a boat shall not make voice or data transmissions and shall not receive voice or data communication that is not available to all boats.
- 3.3. The race committee will make use of VHF radios to keep sailors informed of Start Times, On Course Side (OCS), Postponements and other information regarding the racing.
- 3.4. Failure of the race committee to hail, failure of the amplification system or radios, the order of the hail, or failure of a boat to hear a hail shall not be grounds for a boat to request redress. This instruction changes RRS 41 and 62.1.

4. ELIGIBILITY AND ENTRY

- 4.1. This regatta is open to the following **One-Design classes**: Beneteau 36.7, Catalina 37, Farr 40, Flying Tiger, J/109, J/120, J/70, Martin 242, Schock 35, Viper 640. Additional One-Design classes will be accepted at the discretion of the organizing authorities based on the number of entries and the classes that are established.
- 4.2. **One-Design classes** not having five (5) entries by June 22, 2022 shall be automatically

Ullman Sails Long Beach Race Week

registered in a PHRF class, if applicable, unless permitted otherwise by the organizing authorities.

- 4.3. This regatta is open to **Performance Handicap Racing Fleet (PHRF)** boats having a PHRF handicap of 222 or less. PHRF boats will be separated into classes based on entries received and performance characteristics of the boats.
- 4.4. This regatta is open to **Ocean Racing Catamaran Association (ORCA)** boats wishing to sail random leg courses.
- 4.5. **PHRF** boats wishing to sail random leg courses should indicate so on their entry form.
- 4.6. Eligible boats must enter online at <http://www.lbrw.org>.
- 4.7. The late entry fee applies to entries received after **June 1, 2022**.
- 4.8. **No entries will be accepted after 1800 PST, Tuesday, June 21, 2022** without the approval of the Principal Race Officer.
- 4.9. **PHRF** Class Breaks: In an effort to provide 'like racing' under **PHRF**, boat displacement and other factors will be considered when determining class breaks.

5. FEES

Required Fees are as follows:

LOA	Standard until June 1	Late Entry after June 1
30 Feet and Under including Flying Tiger, J/70, Martin 242, Viper 640 & PHRF	\$270	\$295
31-40 Feet including Beneteau 36.7, Farr40, J/120, Schock 35, & PHRF	\$305	\$330
41-50 Feet including PHRF	\$385	\$410
Over 50 Feet including TP 52, Fast 50, PHRF	\$435	\$460
Catalina 37 plus Charter Fee & Class Assoc.	\$305 +charter fee	\$330 +charter fee

+Catalina 37 charters see NOR 17.

If an individual cancels their participation in race week, then the refund policy is as follows:

- a) Notice period of Cancellation - Greater than 7 days: 100% less 7% credit card processing fees.
- b) Notice period of Cancellation - Greater than 24 hours but less than 7 days: 50%.
- c) Notice period of Cancellation - Less than 24 hours or failure to attend: No refund.

A boat's LOA should be rounded to the lower whole number (e.g. 35' 8" = 35') to determine fees. There will be no social fee.

Your entry fee includes the following:

- Entry to Ullman Sails Long Beach Race Week

- ABYC Friday After Race Party, including music, complimentary hors d'oeuvres and no host bar
- LBYC Saturday After Race Party, including a music, complimentary hors d'oeuvres and no host bar
- Sunday Trophy Presentation Party, including complimentary hors d'oeuvres and no host bar

6. ADVERTISING

- 6.1. Boats may be required to display advertising chosen and supplied by the organizing authority.

7. SCHEDULE

- 7.1. Registration at LBYC:

<i>Thursday June 23, 2022</i>	<i>From 1200 to 1800</i>
<i>Friday June 24, 2022</i>	<i>From 0800 to 1000</i>
- 7.2. Measurement, Inspection and Crew Weigh-In at LBYC:

<i>Thursday June 23, 2022</i>	<i>From 1200 to 1800</i>
<i>Friday June 24, 2022</i>	<i>From 0800 to 1000</i>
- 7.3. Competitors' Briefing at LBYC:



<i>Friday June 24, 2022</i>	<i>From 1030 to 1100</i>
-----------------------------	--------------------------
- 7.4. Dates of Racing:

<i>Friday June 24, 2022</i>	<i>1st Warning</i>	<i>1255</i>
<i>Saturday June 25, 2022</i>	<i>1st Warning</i>	<i>1155</i>
<i>Sunday June 26, 2022</i>	<i>1st Warning</i>	<i>1155</i>

8. MEASUREMENTS

- 8.1. Crew weigh-in is required for One Design classes whose rules specify crew weight limits. The classes include Farr 40.
- 8.2. All boats are subject to additional measurement at any time.
- 8.3. Following each day's racing any boat may be inspected for compliance with their handicap certificate.

9. VENUE

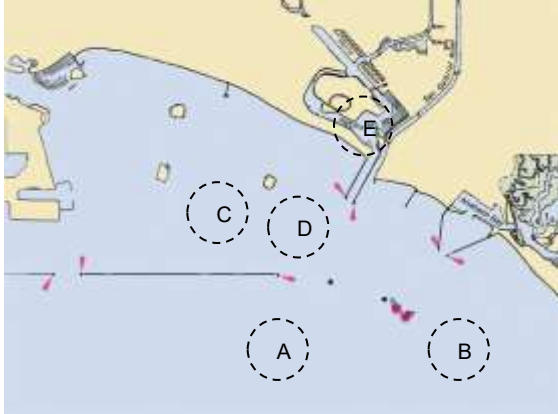
- 9.1. The ABYC  and LBYC  are located on Alamitos Bay, which is situated in the southeastern part of Long Beach California. The diagram below shows locations of the two clubs in Alamitos Bay.

Ullman Sails Long Beach Race Week

9.2.



9.3. It is anticipated that there will be four (4) separate racing areas, each with its own race committee. As entries and class splits are not known in advance, it is not possible to assign racing areas in advance. The diagram below shows the location of the potential racing areas.



10. THE COURSES

- 10.1. The courses for One-Design and PHRF classes will be of a windward leeward configuration.
- 10.2. The courses for the Random Leg fleet will be selected from those published in the sailing instructions. Those courses will include a variety of course lengths around marks and landmarks in San Pedro Bay area, both inside and outside the Federal breakwater.

11. SCORING

- 11.1. Seven (7) races are scheduled of which three (3) must be completed to constitute a series for the One-Design, and PHRF classes.
- 11.2. Random Leg Fleets: Three (3) races are scheduled of which one (1) must be completed to constitute a series.
- 11.3. The regatta will be scored as provided in the RRS except that all a boat's race scores will count (i.e. no scores will be excluded).
- 11.4. PHRF Classes will be scored using the base handicaps provided by the PHRF Southern California. All PHRF Classes will be scored using time-on-time scoring. For each boat, the "Time Correction Factor" (TCF) used will be calculated

based on the following formula:
 $TCF = 650 / (625 + PHRF)$ where "PHRF" is a boat's base SoCal PHRF handicap.

12. BERTHING

12.1. Alamitos Bay Marina

- a) Boats requesting berthing **MUST** contact the LBYC Waterfront Director for further information: 562-493-5173 or e-mail raceoffice@lbyc.org.
- b) The number of transient slips and dock space available in Alamitos Bay Marina is limited. Rafting will be necessary, and registration is required. Boats requiring a berth in Alamitos Bay Marina for Ullman Sails Long Beach Race Week should indicate their intended arrival and departure dates on their online entry form.
- c) Berthing assignments will be published on the Ullman Sails Long Beach Race Week website. <http://www.lbrw.org> posted on the official notice board.
- d) Boats requesting berthing before Sunday, June 19, 2022 or after Tuesday, June 28, 2022 **MUST** contact the LBYC Waterfront Director for further information: 562-493-5173 or e-mail raceoffice@lbyc.org. Longer term storage is very limited and will be assigned on a first come basis.

12.2. Alamitos Bay Yacht Club Yard and Basin

- a) Due to space limitations, vehicle parking on ABYC grounds is restricted. Off-street metered parking is available across the street in municipal lots.
- b) Visiting competing boats may request extended storage **IN ADVANCE** by contacting the ABYC office. The cost is \$15.00 per day paid in advance. Please note ABYC is closed on Monday and Tuesday.
- c) Any boat or trailer found on ABYC property without prior written authorization from ABYC is subject to impound and associated fees.
- d) Boats requesting yard storage before Sunday, June 19, 2022 or after Tuesday, June 28, 2022 **MUST** contact the ABYC Office for further information: 562-434-9955 or e-mail abyc@abyc.org.

13. PRIZES

- 13.1. Boat of the Day and daily awards to winners of Friday and Saturday racing in each established fleet will be presented.
- 13.2. Overall series awards will be presented to each established fleet.

Ullman Sails Long Beach Race Week

- 13.3. The following prizes will be presented to individual boats:

Satariano Boat of the Week

To the one-design class winner whose class featured the closest, most competitive racing for the series

PHRF Boat of the Week

To the PHRF class winner whose class featured the closest, most competitive racing for the series

Catalina 37 National Championship

Winner of the Catalina 37 class

Schock 35 Pacific Coast Championship

Winner of the Schock 35 class

Kent Golison Family Trophy

Highest placing boat in the regatta that is sailed by at least three members of an immediate family

Travel Trophy

Boat owner who has traveled the farthest (based on hometown)

Yacht Club Challenge

The yacht club whose team has the lowest combined score. One yacht on each team must compete in the Catalina 37 class. A yacht club may enter up to three (3) individual teams using a single Catalina 37 entry for multiple teams.

14. RISK STATEMENT

- 14.1. RRS 3 states: 'The responsibility for a boat's decision to participate in a race or to continue to race is hers alone.' By participating in this event each competitor agrees and acknowledges that sailing is a potentially dangerous activity with inherent risks. These risks include strong winds and rough seas, sudden changes in weather, failure of equipment, boat handling errors, poor seamanship by other boats, loss of balance on an unstable platform and fatigue resulting in increased risk of injury. **Inherent in the sport of sailing is the risk of permanent, catastrophic injury or death by drowning, trauma, hypothermia or other causes.**

15. INSURANCE

- 15.1. Each participating boat shall be insured with valid third-party liability insurance with minimum coverage of US \$300,000.00 per event or the equivalent.

16. DEPICTION RELEASE

- 16.1. Competitors, by competing in this event, grant to the Host, perpetually and irrevocably, the unconditional and exclusive right, title and interest throughout the world to use, simulate and portray Participant's name, likeness, voice, personality, personal identification and personal experiences, incidents, situations and events, whether visual and/or audio, including without limitation photographs, videotape, film and other recordings, electronic or optical-based media, or

any other form or medium whatsoever, whether now or hereafter existing, and of every kind and character (collectively "The Images"), which may be taken or taken of Participant while participating in any aspect of the event.

17. CHARTERED BOATS

- 17.1. To request a Catalina 37 charter submit a request by February 28, 2022. Boats will be allocated one per club with preference being given to a) Host clubs, b) Previous winner, c) Sponsors, d) Most geographically distant. Invitations will be sent by March 15, 2022. Any remaining boats will be allocated on a first come first served basis. Please note that your reservation is not secured until your full entry and charter fee is paid to the regatta per NoR sections 4 and 5.

Catalina 37. Chartering please contact Long Beach Sailing Foundation to make a reservation:

Charter Manager: Mary Voigt

Phone: (760) 568-2163

Email: chartermanager@lbycsf.org

18. HOSPITALITY AND SOCIAL

- 18.1. Information for local hotels can be found at the Ullman Sails Long Beach Race Week website. <http://www.lbrw.org>

19. AMENDMENTS TO THIS NOTICE

- 19.1. The organizing authorities reserves the right to amend this notice. Any amendments of this notice made after May 1, 2022 will be posted on the Long Beach Race Week website and e-mailed to those owners whose entries have been accepted.

20. QUESTIONS / CONTACT

Please email questions to: info@lbrw.org.