



THE MILWAUKEGAN RACE

AUGUST 13, 2022

MILWAUKEE to WAUKEGAN

Sailing Instructions

A new opportunity for distance racing along the shores of Lake Michigan from Waukegan to Milwaukee in odd years and Milwaukee to Waukegan in even years.



**Saturday August 13, 2022
2022 Milwaukee Race
Milwaukee to Waukegan
Sailing Instructions**



Co Hosted by The Waukegan Yacht Club and The Milwaukee Yacht Club

1 RULES

- 1.1 The race will be governed by the rules as defined in The Racing Rules of Sailing (RRS).
- 1.2 The following rule will be changed:
The Race Committee (RC) will use VHF channel 72 to communicate to competitors. Failure to make any broadcast or failure to hear any broadcast will not be grounds for redress. This changes RRS 62.1.
- 1.3 If there is a conflict between the Notice Of Race (NOR) and the Sailing Instructions (SIs), the Sailing Instructions shall take precedence.

2 NOTICES TO COMPETITORS

Notices to competitors will be posted on the official notice board at the Waukegan Yacht Club (WYC) and The Milwaukee Yacht (MYC) Club. Notices will also be posted on Regatta Networks. (www.regattanetworks.com)

3 CHANGES TO THE SAILING INSTRUCTIONS

- 3.1 Any change to the sailing instructions will be posted before 1200 on the day before the race at both clubs and on Regatta Networks.

4 SIGNALS MADE ASHORE

- 4.1 Signals made ashore will also be noted on the Regatta Networks Website.
- 4.2 When flag AP is displayed ashore, '1 minute' is replaced with 'not less than 60 minutes' in the race signal AP.

5 SCHEDULE OF EVENTS

Date	Event	Time
Thurs., 8/11/22	Online Registration Ends	2359 (CDT)
Fri., 8/12/22	Check In (MYC)	1200 to 2000 (CDT)
Fri., 8/13/22	Competitors Meeting (MYC)	Appx. 2000
Sat 8/13/22	Late Check in (MYC)	0630 to 0730 (CDT)
Sat 8/13/22	1st Warning, Short-Hand Fleet	0755 (CDT)
Sat 08/13/22	1st Warning, Cruising Fleet	0800 (CDT)
Sat 08/13/22	1st Warning PHRF 2	0805 (CDT)
Sat 08/13/22	1st Warning PHRF 1	0810 (CDT)
Sun 08/14/22	Awards at Waukegan Yacht Club	0830 to 1000 (CDT)

6 CLASS FLAGS

The Class flag used in accordance with RRS 26.
 Short Handed Fleet shall be numeral pennant "4".
 Cruising Fleet shall be numeral pennant "3".
 PHRF 2 shall be numeral pennant "2".
 PHRF 1 shall be numeral pennant "1".

7 RACING AREA

The racing area will be in the waters of Lake Michigan between Milwaukee, WI and Waukegan, IL.

8 THE COURSE

- 8.1 The course will be a port-to-port configuration. The course diagram is included with this document.
- 8.2 The course will be from the Milwaukee Start Line, Buoys G1, R14, R16 and R18 to Starboard to the Waukegan finish line. **ALL MARKS SHALL BE TAKEN TO STARBOARD**

9 MARKS

- 9.1 The starting marks will be between a staff displaying an orange flag on the RC signal vessel and the MYC Gathering Mark (appx. 1.5KM east of the North Gap of the Milwaukee Harbor. The coordinates of the MYC RC signal boat and that buoy will be approximately N43° 02' W87° 50'. The RC signal boat will be to Starboard and the gathering mark will be to Port.
- 9.2 The finish line will be marked by a staff displaying a blue flag on the RC finish vessel and the Waukegan Shoal Buoy # 3 (see 12.1 below)

10 DIVISION FLAGS and CHECK IN

- 10.1 All boats will be issued Division Streamers according to the section in which they are registered. Each boat shall display the streamer from its back stay before the boat enters the starting area and for at least 30 minutes before and after finishing.
- 10.2 All boats shall check in with the Race Committee Signal Boat prior to the first warning of the day (0755). Prior to the first start, the Signal boat will display flag "L". Boats may check in by radio on channel 72.



Saturday August 13, 2022
2022 Milwaukee Race
Milwaukee to Waukegan
Sailing Instructions



Co Hosted by The Waukegan Yacht Club and The Milwaukee Yacht Club

10.3 Failure to display a division flag and/or failure to check in may result in a penalty up to disqualification (DSQ).

11 THE START

11.1 Races will be started by using RRS 26 with the warning signal made 5 minutes before the starting signal.

11.2 A boat that does not start within ten (10) minutes after the final starting signal will be scored Did Not Start (DNS) without a hearing. This changes RRS A4 and A5.

11.3 Recalls will be signaled in accordance to RRS 29.1 and 29.2. If a boat is identified, the Race Committee will attempt to broadcast her sail number on VHF channel 72. Any errors or omissions of these broadcasts or failure to hear them shall not constitute grounds for granting redress. This changes RRS 62.1(a).

12 THE FINISH

12.1 The finish is located approximately .7nm east of the Waukegan North Harbor Entrance. The line itself will be between the Waukegan Shoal Buoy #3 and the Blue flag on the Signal Boat anchored no more than 300 feet to the west. The Waukegan Shoal Buoy # 3 is located at 42 21.682N 87 47.880W. All boats shall leave the buoy to Port.

12.2 Competitors shall call in to RC on Channel 72 when approximately one half (0.5) mile from Finish. RC may or may not acknowledge the call.

12.3 Competitors shall note finish time on finish report along with name of boat in front and behind (if known) and deliver the finish report to the Race Committee at The Waukegan Yacht Club when checking in.

Failure to deliver the finish report to Race Committee may result in a penalty up to disqualification.

12.4 If the finish boat **IS NOT** on station, each boat shall take its own time, as instructed above and report that time to Race Committee when submitting the finish report.

13 PENALTY SYSTEM

13.1 If a boat acknowledges that they have broken a rule of Part 2 or RRS 31 while racing, that boat will have an additional 5 minutes added to her actual elapsed time. Taking this scoring penalty must be recorded on the official finish log (attached).

14 TIME LIMIT

14.1 The time limit for the race will be 20-hours after the designated start time of PHRF 1.

14.2 Boats failing to finish within time limit will be scored Did Not Finish (DNF) without a hearing. This changes RRS 35 and 63.1.

15 PROTEST AND REQUEST FOR REDRESS

15.1 Protest forms are available at The Waukegan Yacht Club and shall be delivered there within the protest time limit.

15.2 The protest time limit is one hour after the finish of the protesting boat. No protest will be accepted more than one hour after the last boat has finished.

15.3 Notices will be posted no later than 90 minutes after the protest time limit to inform competitors of hearings in which they are parties or named as witnesses until 10 PM (2200 hrs) on the day of the race. All other postings and hearings will be held the following morning starting at 8 AM (0800). Hearings will be held at the Waukegan Yacht Club and will be conducted in the approximate order as received.

16 SCORING

16.1 The Low Point method of scoring, found in Appendix A4, shall apply.

17 SAFETY REGULATIONS

17.1 The OA recommends that all competitors abide by the recommendations of U S Sailing Monohull SER Nearshore "Safety Equipment Requirements".

17.2 Any boat intending to race shall sail past the stern of the race committee boat and hail her sail number as described and required in rule 10, above.

17.2 A boat that retires from the race must notify the race committee as soon as possible. The use of VHF on channel 72 is acceptable. The boat may also call The Milwaukee Yacht Club at **414-271-4455** or The Waukegan Yacht Club at **312-420-1914 or 414-305-8957** (Texts may also be sent to these numbers). A boat that retires is also asked to email the finish line Race Committee at **sail@waukeganyachtclub.com** to indicate that they are retiring from the race.



**Saturday August 13, 2022
2022 Milwaukee Race
Milwaukee to Waukegan
Sailing Instructions**



Co Hosted by The Waukegan Yacht Club and The Milwaukee Yacht Club

19 RADIO COMMUNICATION

- 19.1 Except in an emergency, a boat that is racing shall not make voice or data transmissions and shall not receive voice or data communication that is not available to all boats.
- 19.2 The RC will use VHF channel 72 to communicate supplemental information to the fleet. These VHF transmissions are provided only as a courtesy. Any errors or omissions of these broadcasts or failure to hear them shall not constitute grounds for granting redress. This changes RRS 62.1(a).

20 PRIZES

Prizes will be awarded Sunday August 14th from 0830 to 1000 at the WYC.

21 DISCLAIMER OF LIABILITY

Competitors participate in the race entirely at their own risk. See RRS 4, Decision to Race. The organizing authority will not accept any liability for material damage or personal injury or death sustained in conjunction with or prior to, during, or after the race.

22 INSURANCE

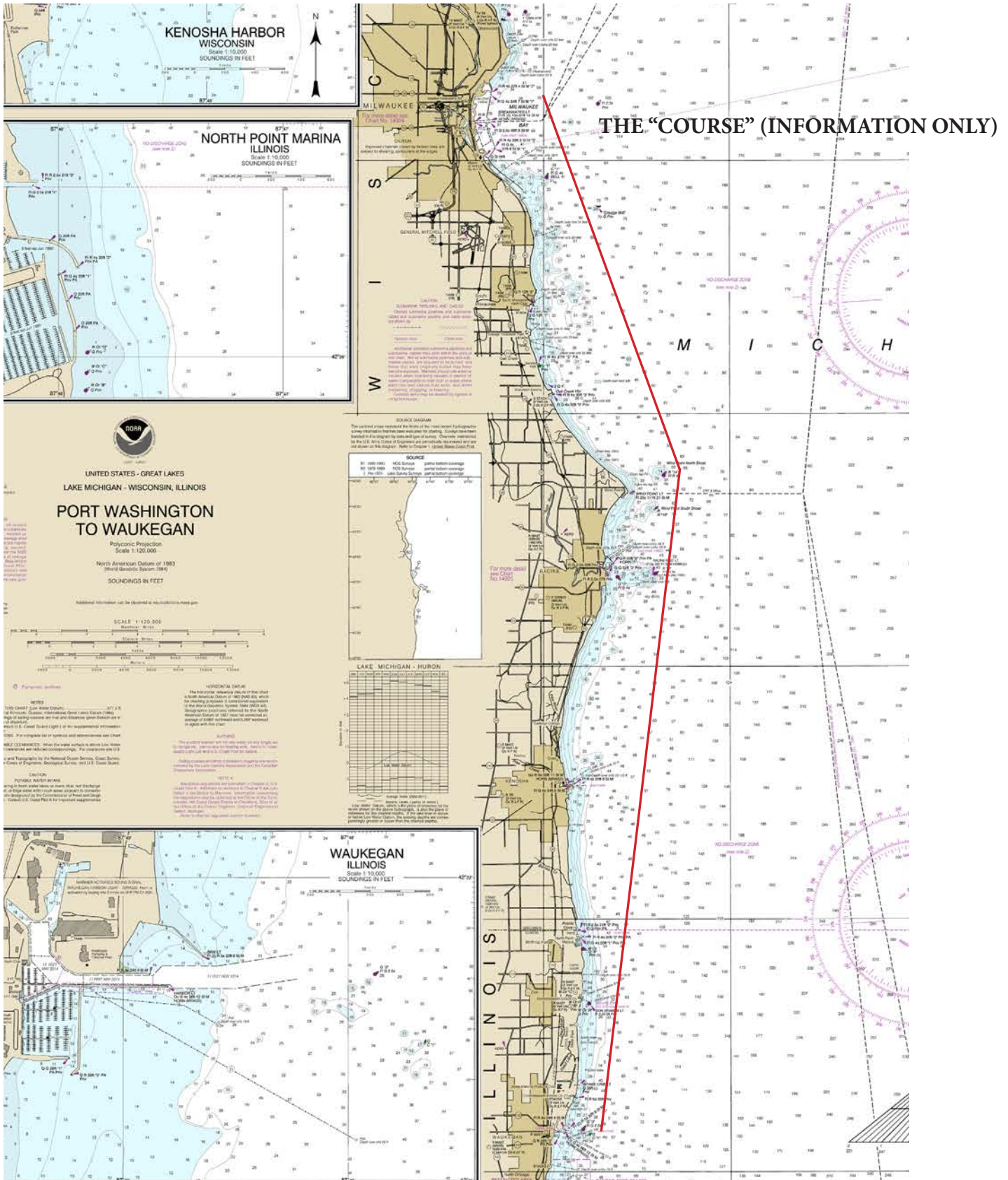
Each participating boat shall be insured with valid third-party liability insurance with a minimum cover of \$300,000 (USD) per incident or the equivalent. Proof of insurance must be provided to either club. Failure to provide proof of insurance may be grounds for Disqualification (DSQ).



Saturday August 13, 2022 2022 Milwaukee Race Milwaukee to Waukegan Sailing Instructions



Co Hosted by The Waukegan Yacht Club and The Milwaukee Yacht Club



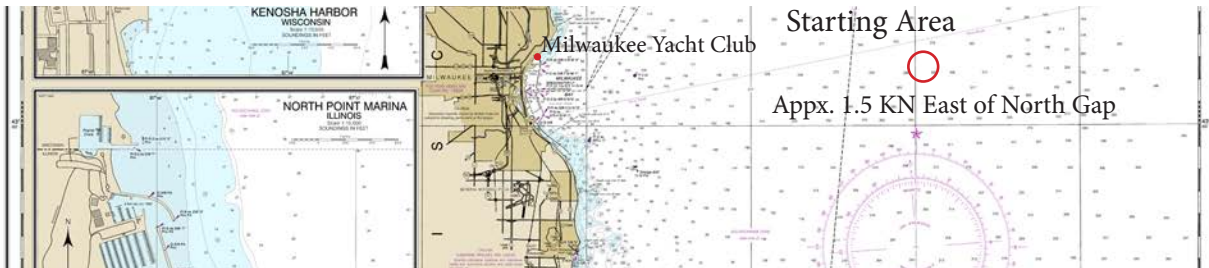


**Saturday August 13, 2022
2022 Milwaukee Race
Milwaukee to Waukegan
Supplemental Information**



Co Hosted by The Waukegan Yacht Club and The Milwaukee Yacht Club

MYC/McKinley Marina & Starting Area (For Information only)



For boaters arriving prior to August 13, please contact the Milwaukee Yacht Club at 414-271-4455 to arrange for dockage. If arriving without prior notification to club, contact MYC dockstaff on VHF 71.

On Friday evening there will be a buffet dinner (additional cost) served on the patio/lawn at MYC. Following the dinner (appx. 8pm) there will be a Competitors meeting and weather briefing (Courtesy of North Sails).

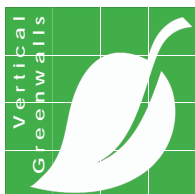
Waukegan Harbor & Finish Area (For Information only)



Dockface space is available at WYC post race in the North Harbor both east and north of WYC. For those who prefer, a slip can be rented in the South Harbor using the Dockwa App. (download from your preferred source). If you note that you are part of the Milwaukee race, Waukegan Harbor may refund a portion of the dockage fee.

Cocktails and dinner (additional cost) will be available at WYC on Saturday evening and breakfast buffet will accompany the awards program Sunday morning at WYC (included in registration)

Our Sponsors





Saturday August 13, 2022
 2022 Milwaukee Race
 Milwaukee to Waukegan



Co Hosted by The Waukegan Yacht Club and The Milwaukee Yacht Club

FINISH REPORT

To be delivered to Race Committee upon completion of the race.

**FAILURE TO DELIVER THIS REPORT TO THE RACE COMMITTEE MAY
 RESULT IN DISQUALIFICATION.**

SUBMITTED BY:

Yacht Name: _____

Finish Time (H/M/S) (CDT): _____

Yacht Ahead (if known)*: _____

Yacht Behind (if known)*: _____

Radio call placed to Finish Boat. Appx. time (H/M): _____

SCORING PENALTY TAKEN? (Mark one) YES NO

Competitor Signature: _____

RECEIVED BY:

RC Signature: _____

Time: _____

** This information is not mandatory but is asked for to assist Race Committee in verifying finishes.*

Our Sponsors

