



# Sailing Instructions

## Wickford Regatta 2022

*Wickford Yacht Club is the Organizing Authority*

# PRELIMINARY



**1. Rules:** The regatta will be governed by the rules as defined in the Racing Rules of Sailing and the class rules of the invited classes.

**2. Notices to Competitors:** Notices to competitors will be posted on the online notice board. Alpha Course will make courtesy announcements to competitors and monitor VHF Channel 72 and Bravo Course will monitor VHF Channel 78a.

### 3. Signals Made Ashore

**3.1** Signals made ashore will be made orally from the vicinity of the race office tables. This changes RRS 90.2(c)

**3.2** The intended start time for Sunday's races will be posted on the online notice board shortly after racing on Saturday.

**4. Eligibility and Entry:** The regatta is open to the **I-420, Laser, Laser Radial, RS Aero, F-18, 505, J/22, 29er and Finn** classes. All entries shall conform to the eligibility rules of the respective classes.

### 5. Event Schedule

<b>Friday</b>	<b>June 10, 2022</b>
1500-1800	Check in and late registration
<b>Saturday</b>	<b>June 11, 2022</b>
0830-1000	Check in and late registration
1000	Competitors meeting in the vicinity of the race office tables.
1200	Warning signal first race. Subsequent races to follow immediately
<b>Sunday</b>	<b>June 12, 2022</b>
1000	Earliest possible start time. Subsequent races to follow immediately.
1500	No warning signal after this time.

### 6. Class Flags and Course Area Assignments

Class	Class Flag	Course Area
I-420	Red flag with white 420	Alpha
Finn	Numeral pennant #1 – white pennant with red circle	Alpha
RS Aero	Numeral pennant #2 – blue pennant with white circle	Alpha
Laser	White flag with red Laser logo	Alpha
Laser Radial	Numeral pennant #3 - red, white, blue vertical bands	Alpha
F-18	Pink F-18 on white background	Bravo
505	Numeral pennant #1 - white pennant with red circle	Bravo
J/22	Numeral pennant #2 – blue pennant with white circle	Bravo
29er	Numeral pennant #3 - red, white, blue vertical bands	Bravo

**7. Racing Area:** See Appendix A.

## 8. Courses and Marks

- 8.1 See Appendix B for course diagrams and descriptions.
- 8.2 **Marks 1 and 2** on courses **I** and **O** and **mark 1** on Course **W** will be 5' bright orange West Marine "tomatoes".
- 8.3 All **gate marks** and mark **5** on the trapezoid courses will be 4' red/orange APS cylinders.
- 8.4 The **short weather mark, 1S**, on Bravo course will be a 4' "safety yellow" tomato.
- 8.5 The **first mark** on course **9** on Bravo course will be an orange 4' APS cylinder.
- 8.6 **Offset marks** on Bravo course will be 2' bright orange buoys.
- 8.7 No later than the warning signal the race committee signal boat will display the course designation for the next class to start.
- 8.8 When sailing course **W**, marks **WS** and **9** may not be in position and vice versa. In this situation the mark(s) not in position at the start of the leg may be set during the leg for another class. It is the competitor's responsibility to sail to the correct weather mark.
- 8.9 Courses **I**, **O** and **WL** will only be used on Alpha Course.
- 8.10 Courses **W**, **WS** and **9** will only be used on Bravo Course.
- 8.11 Course **U** will not be used.

## 9. Start

- 9.1 Races will be started by using RRS 26 for all classes.
- 9.2 The starting line will be between a staff displaying orange flag on the signal boat and a 2' bright orange buoy on the port end of the starting line or an orange flag on the port end boat.
- 9.3 Boats whose warning signal has not been made shall avoid the starting area.
- 9.4 A boat starting later than 4 minutes after her starting signal will be scored Did Not Start.
- 9.5 The intended starting order will be announced at the competitors meeting on Saturday and will be posted on the notice board before 9:00 AM on Sunday. The starting order may be changed to minimize delays.
- 9.6 There will be a 2' faded orange buoy above the starting line and slightly to the left of the signal boat. This buoy ranks as a mark and has a required side for the 505 class only and does not rank as a mark of the course for any other classes.
- 9.7 The Race Committee will not be making VHF transmissions for Individual Recalls.

**10. Change of the Next Leg of the Course:** The distance and direction to the next mark may be changed +/- .2nm and a maximum of 10 degrees without any signal. The new mark shall be in place before any boat begins the leg. This changes **RRS 33**. Subsequent legs may be changed to maintain the course shape.

## 11. Finish

- 11.1 On courses **I** and **O** (trapezoid courses) the finish shall be between an orange flag on the finish boat and a 32" yellow APS buoy.
- 11.2 On course **WL** the finish shall be between an orange flag on the starboard side of the signal boat and a 2' bright orange buoy to be left to port.
- 11.3 On courses **W**, **WS**, and **9** the finish shall be between an orange flag on the starboard side of the signal boat and a 32" yellow APS buoy. There will be a 2' bright orange keep off buoy approximately 80' off the starboard side of the committee boat which must be left to starboard. The keep off buoy ranks as a mark but may not be precisely on the finish line.
- 11.4 To best utilize racing time, boats not yet finished and deemed significantly behind boats already finished may be finished in place or scored the average place of all boats not yet finished.

**12. Penalty System:** For the F-18 and 29er classes, RRS 44.1 is changed so that the Two-Turns Penalty is replaced by a One-Turn Penalty.

**13. Time Limit and Target Times**

Time limits and target times for the first boat are as follows:

<i>Class</i>	<i>Time limit</i>	<i>Target time</i>	<i>Time limit after the first finisher</i>
All Classes	80 minutes	40 minutes	15 minutes

**14. Protests**

**14.1** Protest forms are available in the race office tent. Protests and requests for redress shall be delivered there within the appropriate time limit.

**14.2** The protest time limit is 60 minutes after the last boat has finished the last race of the day in its course area and will be posted on the official notice board.

**15. Scoring:** The Low Point Scoring System, Appendix A of the racing rules will apply. There will be one throw-out if 4 or more races have been completed. Eight races are scheduled for all classes except 29er which may sail up to 10 races. One race shall be completed to constitute a series for all classes.

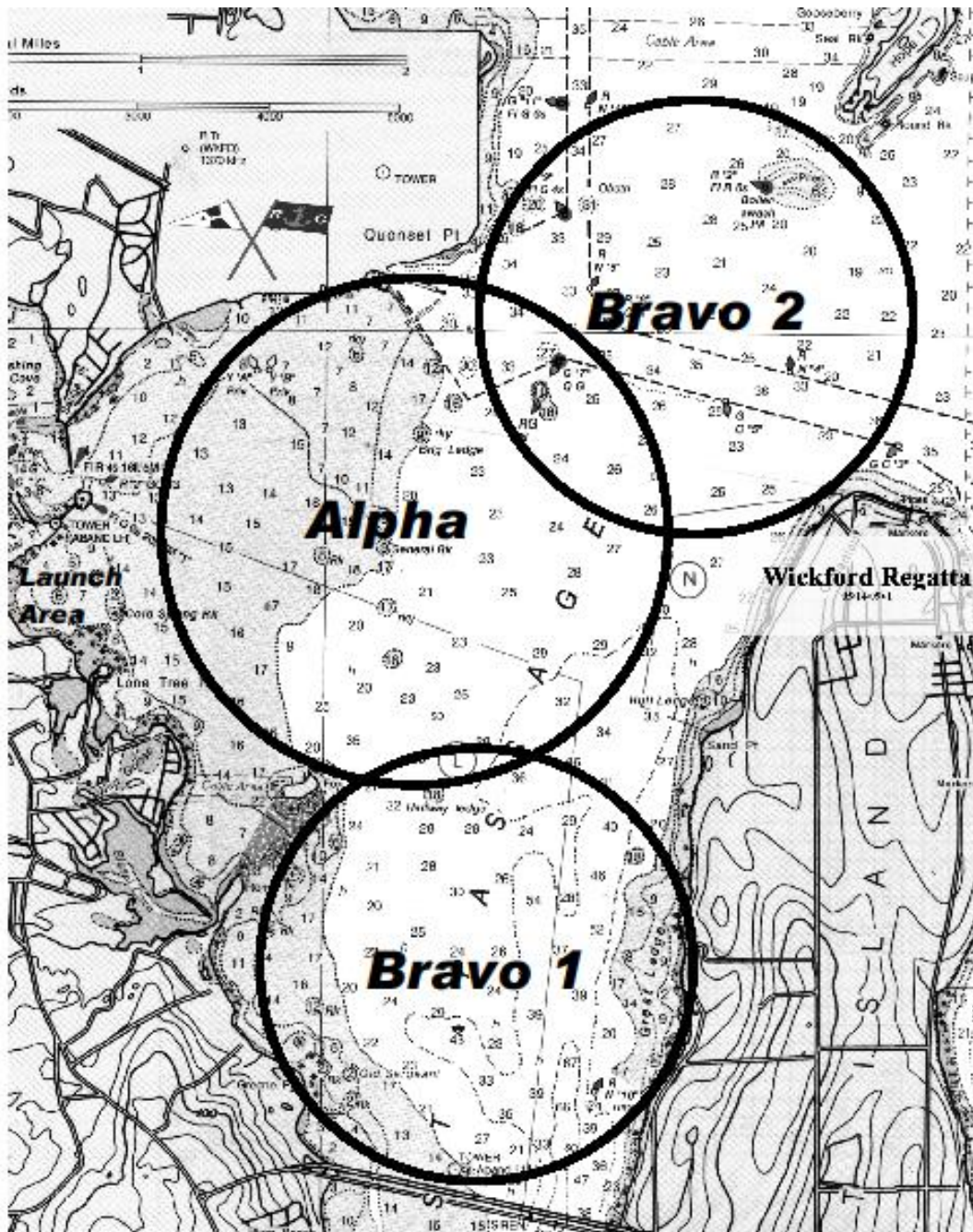
**16. Safety:** Each competitor will be responsible for wearing an USCG approved PFD at all times on the water. This changes RRS 40.

**17. Prizes:** Prizes will be awarded based upon the number of entries received by the end of advanced registration. 10 or more entries, top three. Fewer than 10, top two. Equal prizes will be awarded to both skipper and crew in double handed events.

**18. Disclaimer of Liability:** Competitors participate in the regatta entirely at their own risk. See rule RRS 4, Decision to Race. The organizing authority will not accept any liability for material damage or personal injury or death sustained in conjunction with or prior to, during, or after the regatta.

# Appendix A

## Course Areas



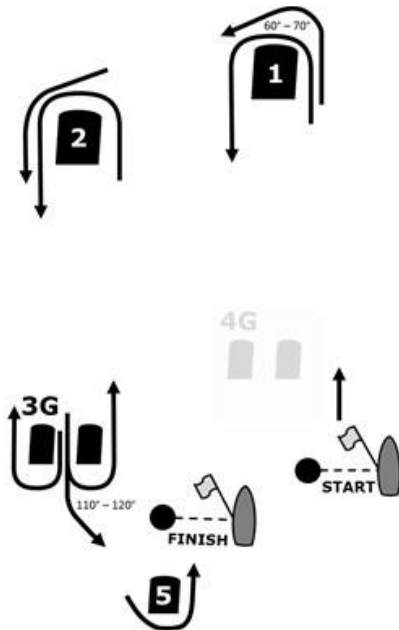
### Tide Times and Heights

	Hi	Lo	Hi
Sat 11	5:34 AM 3.58'	11:00 AM -0.06'	6:05 PM 4.69'
Sun 12	6:31 AM 3.79'	11:48 AM -0.28'	6:59 PM 5.03'

## Appendix B – Alpha Course Diagrams

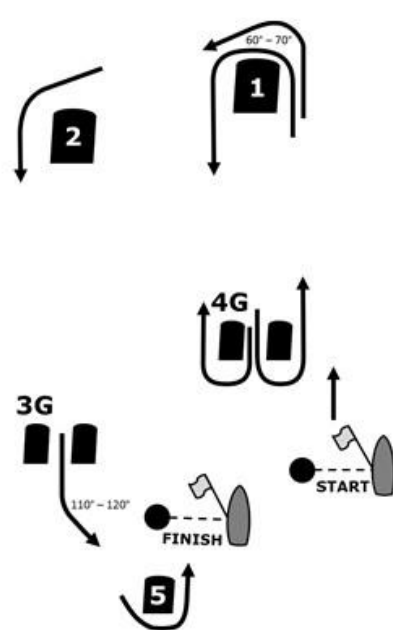
### Course **O** Trapezoid Outer Loop

**O** = Start, 1, 2, 3G, 2, 3G, 5, Finish



### Course **I** Trapezoid Inner Loop

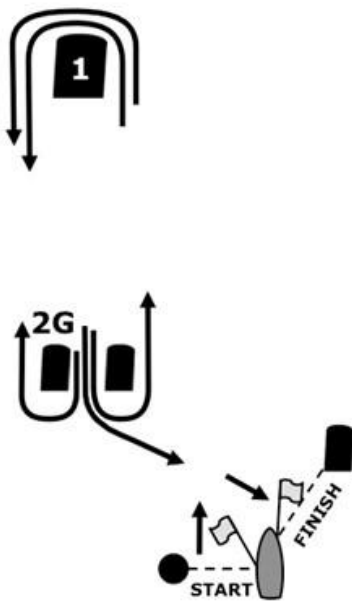
**I** = Start, 1, 4G, 1, 2, 3G, 5, Finish



### Course **WL** Windward - Leeward

**WL** = Start, 1, 2G, 1, 2G, Finish

Alpha Course Only



## Appendix B – Bravo Course Diagrams

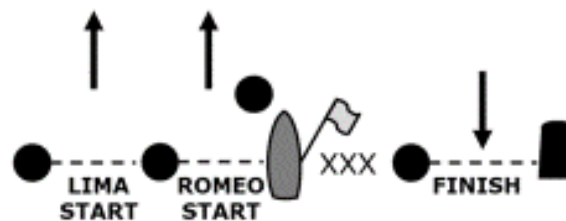
---

**Course "W"** = Start, 1, "o", 2G, 1, "o", Finish

**Course "WS"** = Start, 1S, "o", 2G, 1S, "o", Finish

**Course "9"** = Start, 9, 2G, 9, Finish

**Course "U"** = Start, U, 2G, U, Finish



## Appendix C – 505 Gate Start Procedure

**C1** Races will be started using RRS 26 with the warning signal made 5 minutes before the starting signal from the Race Committee Boat.

**C1.1** A starboard limit mark will be set slightly to windward and to the port side of the signal boat. All boats shall either be to the left of the starboard limit mark or pass the starboard limit mark to starboard after the pathfinder passes the port limit mark. No boats may pass to windward of the starboard limit mark on port tack before starting. The starboard limit mark replaces the time limit that the gate is open.

**C2** The starting line (except for the Pathfinder) shall be between the Port Limit Mark and the center of the stern of the Pathfinder.

**C2.1** The Port Limit Mark will be the pin end of the starting line as described in **SI9.2**, or if a pin boat is used for other starts, the Port Limit Mark will be set a short distance upwind of the pin boat.

**C3** The Pathfinder for the first race sailed will be appointed by the Race Committee. The Pathfinder for subsequent races will be the boat that finished 4<sup>th</sup> in the preceding race. When this boat is unable to race or has acted as Pathfinder previously, the Pathfinder will be appointed by the race committee and will normally be the boat that finished 5<sup>th</sup> in the preceding race.

**C3.1** The national letters and sail number of the Pathfinder will be posted on the official notice board for the first scheduled race of the day, and on the Race Committee Boat for any subsequent races that day.

**C3.2** Prior to the preparatory signal the Pathfinder shall report to the Race Committee Boat.

**C4** Approximately 5 seconds prior to the starting signal the Pathfinder shall round the Port Limit Mark (leaving it to port) and begin a close-hauled port tack.

**C5** The gate is considered open when the Pathfinder clears the Port Limit Mark.

**C5.1** A boat starts when, having been entirely on the pre-start side of the starting line before the gate opens, any part of her hull, crew or equipment crosses the starting line in the direction of the first mark. This changes the definition in the RRS.

**C6** All boats (except for the Pathfinder) shall start on starboard tack after the Pathfinder clears the Port Limit Mark. RRS 29.2, Individual Recall, shall not apply.

**C7** The Pathfinder shall sail its close-hauled port tack course until it passes the starboard limit mark to starboard or until the last boat crosses the starting line, after which it ceases to be a starting mark and may continue its course or tack onto starboard tack.

**C8** **The gate is closed once all competitors have started. Thereafter no boat shall start.**

**C9** Before starting, a boat shall not interfere with the Pathfinder. Any boat that interferes with, or that causes another boat to interfere, or that is on the port side of the Pathfinder as it opens the gate, shall retire from that race and shall be ineligible for any restarts of that race unless the infringing boat can satisfy the Race Committee that its actions were caused either by another boat not having right of way or by some other unavoidable circumstance. This changes RRS 36. Note that making contact without impeding progress is not considered interference and hence an infringing boat is not disqualified.