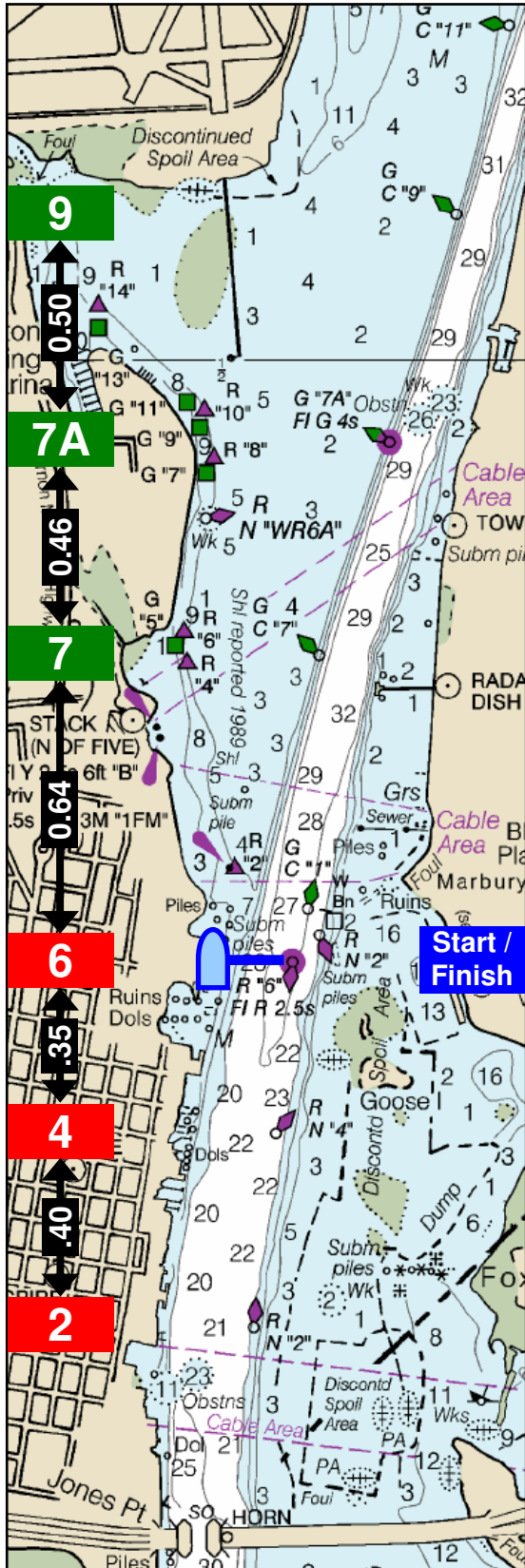


# Daingerfield Island Sailing Club

## Middle Courses



ID	Course	NM
<b>Southbound Start</b>		
2A	S - 4 - 6 - 4 - F	1.44
D	S - 4 - 7 - F	2.00
E	S - 6 - 4 - 6 - F	2.30
F	S - 2 - 7 - F	2.82
G	S - 4 - 7A - F	2.92
2C	S - 2 - 6 - 2 - F	3.08
H	S - 2 - 7A - F	3.74
I	S - 4 - 9 - F	3.90
2D	S - 4 - 7 - 4 - 7 - F	4.00
J	S - 2 - 9 - F	4.42
2F	S - 2 - 7 - 2 - 7 - F	5.64
2G	S - 4 - 7A - 4 - 7A - F	5.84
2H	S - 2 - 7A - 2 - 7A - F	7.48
2I	S - 4 - 9 - 4 - 9 - F	7.80
2J	S - 2 - 9 - 2 - 9 - F	9.44
<b>Northbound Start</b>		
RB	S - 7 - F	1.28
RD	S - 7 - 4 - F	2.00
RE	S - 7A - F	2.20
2RB	S - 7 - 6 - 7 - F	2.56
RF	S - 7 - 2 - F	2.82
RG	S - 7A - 4 - F	2.92
RH	S - 7A - 2 - F	3.74
RI	S - 9 - 4 - F	3.90
2RD	S - 7 - 4 - 7 - 4 - F	4.00
2RE	S - 7A - 6 - 7A - F	4.40
RJ	S - 9 - 2 - F	4.42
2RF	S - 7 - 2 - 7 - 2 - F	5.64
2RG	S - 7A - 4 - 7A - 4 - F	5.84
2RK	S - 9 - 6 - 9 - F	6.36
2RH	S - 7A - 2 - 7A - 2 - F	7.48
2RI	S - 9 - 4 - 9 - 4 - F	7.80
2RJ	S - 9 - 2 - 9 - 2 - F	9.44

Decoding the course modifiers:

R = Reverse (northbound start)

S = Starboard rounding

# = Number of laps

For example, 2SRJ means two laps around the J course in reverse order and round all the marks to starboard.